



19 Mallory Close, Chesterfield, S41 9EW

Saxton Mee

19 Mallory Close

£259,500

**** NO CHAIN ****

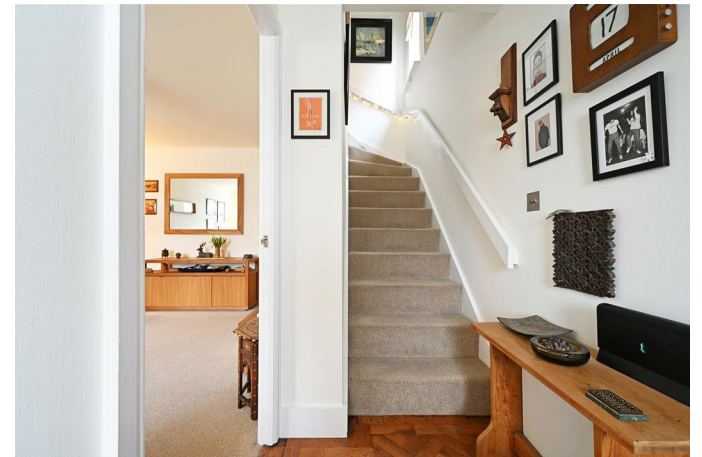
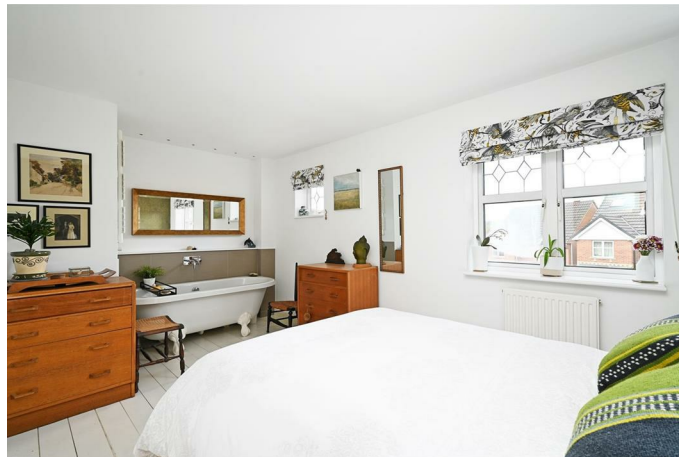
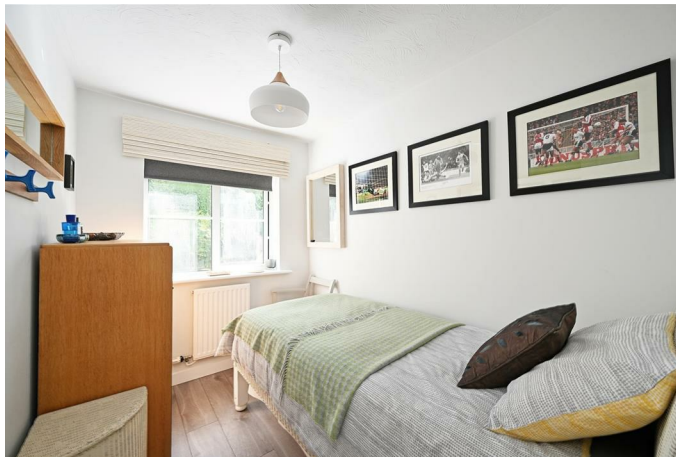
This exceptionally well presented three bedroomed detached house is perfect for a young family or couple and is conveniently situated within easy reach of Dronfield and Chesterfield both affording a comprehensive range of amenities.

Offering surprisingly spacious accommodation the gas centrally heated and double glazed accommodation briefly comprises of an entrance hall with parquet flooring, downstairs cloakroom/WC, well proportioned living room, superb dining kitchen with a range of contemporary fitted units with twin French doors opening to the private rear garden and patio. Useful understairs store cupboard. First floor landing off which opens the superb master bedroom with feature free standing bath, two further good size bedrooms and excellent family shower room.

Outside is a front garden with tarmac driveway and large attached garage. Attractive rear garden with decked and block paved entertaining areas enjoying a favoured southerly aspect.

- Stylishly presented
- Ideal for a family or couple
- Favoured cul-de-sac position
- Attractive south facing rear garden
- Deceptively proportioned
- Excellent master bedroom with free standing bath
- Double glazed and Worcester Bosh Green Star combination boiler
- No Upward Chain
- Council Tax Band: C
- Tenure: Freehold EPC: C





19 MALLORY CLOSE

APPROXIMATE GROSS INTERNAL AREA = 71.7 SQ M / 772 SQ FT

GARAGE = 14.7 SQ M / 158 SQ FT

TOTAL = 86.4 SQ M / 930 SQ FT

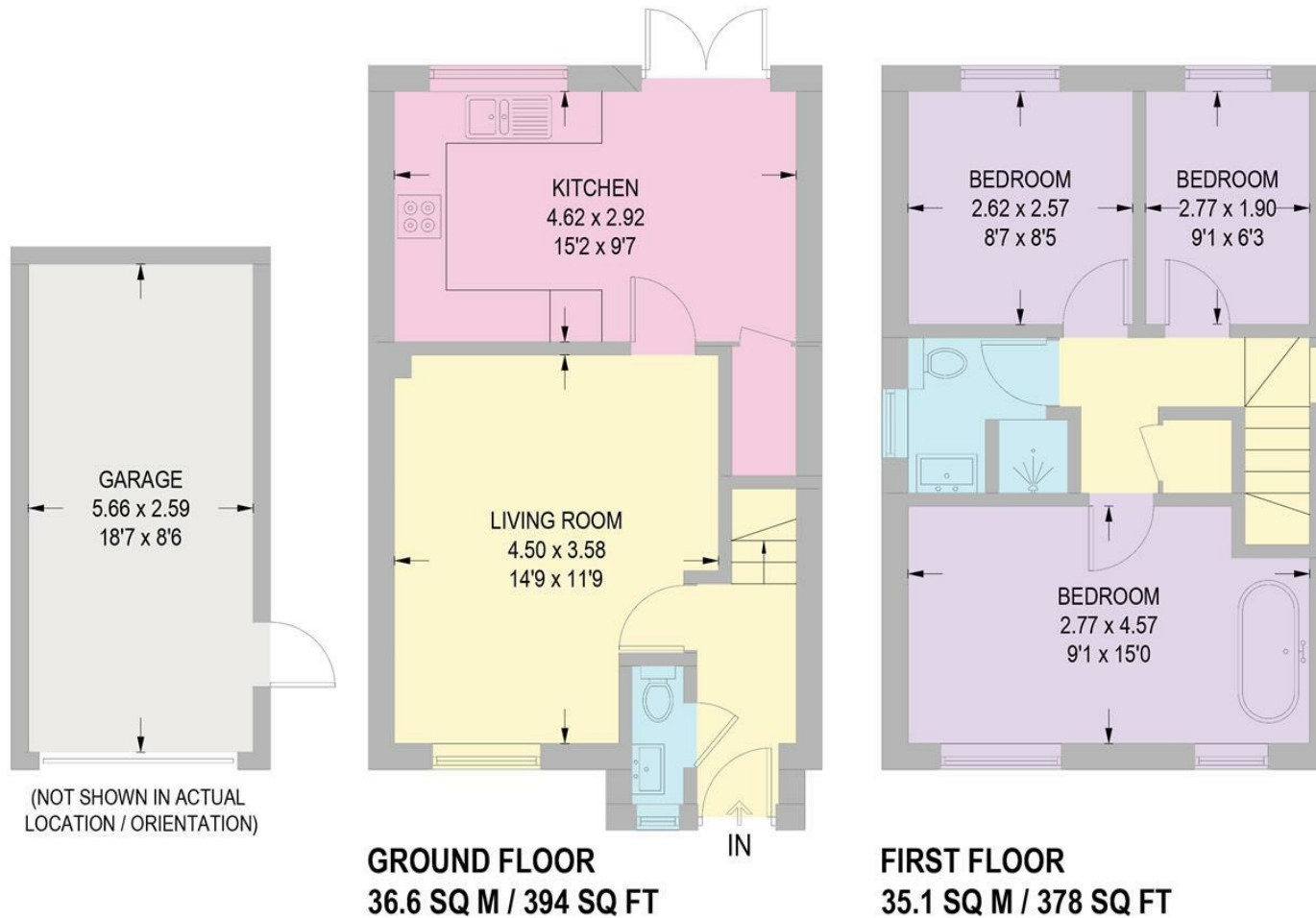


Illustration for identification purposes only,
measurements are approximate, not to scale.

While we endeavour to make our sales particulars fair, accurate and reliable, they are only a general guide to the property and, accordingly, if there is any point, which is of particular importance to you, please contact the relevant office. The Agents have not tested any apparatus, equipment, fittings or services and so cannot verify they are in working order. The buyer is advised to obtain verification. Please note all the measurement details are approximate and should not be relied upon as exact. All plans, floor plans and maps are for guidance purposes only and are not to scale. Under no circumstances should they be relied upon as exact or for use in planning carpets and other such fixtures, fittings or furnishings. YOUR HOME IS AT RISK IF YOU DO NOT KEEP UP REPAYMENTS ON A MORTGAGE OR OTHER LOAN SECURED ON IT. 'A Life Assurance policy may be requested.' 'Written Quotations of credit terms available on request.'

Banner Cross
T: 0114 268 3241
E: bannercross@saxtonmee.co.uk
www.saxtonmee.co.uk

Dronfield
T: 01246 290992
E: dronfield@saxtonmee.co.uk

Hathersage
T: 01433 650009
E: hathersage@saxtonmee.co.uk

Bakewell
T: 01629 815307
E: bakewell@saxtonmee.co.uk

Matlock
T: 01629 828250
E: matlock@saxtonmee.co.uk

Saxton Mee