



4 Brookvale Close, Barlow, Dronfield, S18 7TS

Saxton Mee



# 4 Brookvale Close

## Barlow

£435,000

A great opportunity to purchase a deceptively spacious four double bed roomed and two bathroomed detached house which is perfect for family occupation standing on a favoured cul-de-sac position within this highly sought after village.

There are a host of local amenities nearby, including a primary school just a short walk away and is well placed for easy access to Dronfield, Sheffield and Chesterfield. Also Barlow is on the doorstep of the Peak District National Park, with access to a wealth of recreational activities.

Offering gas fired central heating and double glazing the generous property enjoys appealing views at the front and briefly comprises: entrance hall, downstairs WC, good sized living room with bay window and twin doors to the dining room which stands adjacent to the large kitchen and would lend itself to being opened through from the kitchen. The kitchen has a good range of units and understairs store cupboard. landing, large master bedroom with built in wardrobes, superb en-suite shower room, two further good size double bedrooms (both with built in wardrobes), larger than average fourth bedroom, and family bathroom.

The property benefits from a recently re-surfaced dual access drive with an 'in out' facility. Good size shaped lawns to the front and rear of the property along with flowerbeds. Also at the rear is a sitting out patio. Integral garage.



- Nicely proportioned family home
- Four good size bedrooms
- Large master bedroom with superb en-suite
- Large kitchen and spacious living room
- Gas central heating and double glazing
- Appealing views
- Favoured cul-de-sac in a sought after village
- In out driveway - integral garage
- Viewing recommended
- Freehold / Council Tax Band: / EPC: C







## 4 BROOKVALE CLOSE

APPROXIMATE GROSS INTERNAL AREA = 139.1 SQ M / 1498 SQ FT

GARAGE = 14.7 SQ M / 158 SQ FT

TOTAL = 153.8 SQ M / 1656 SQ FT

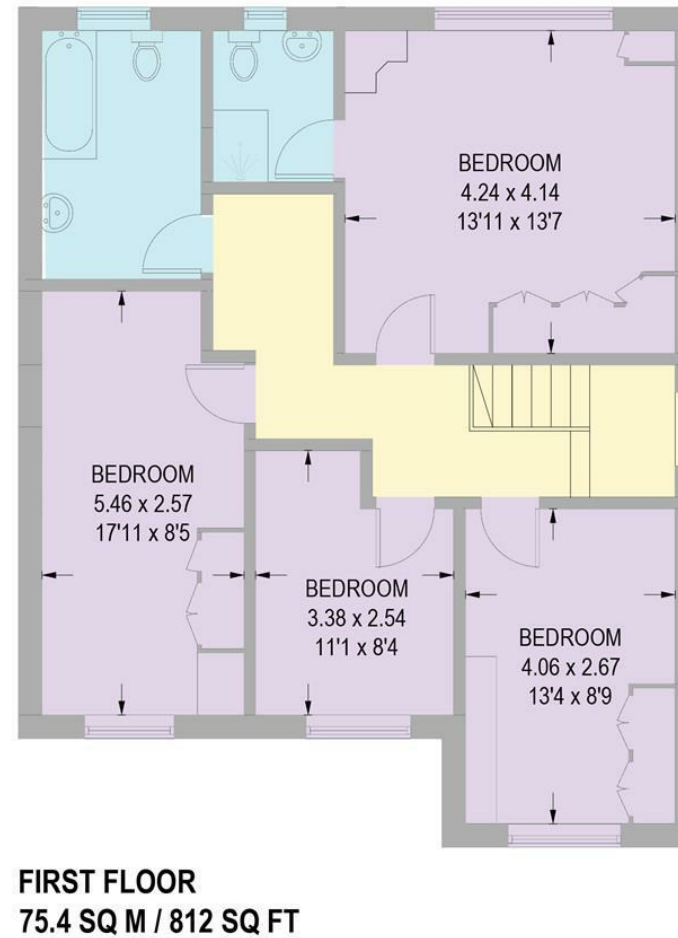
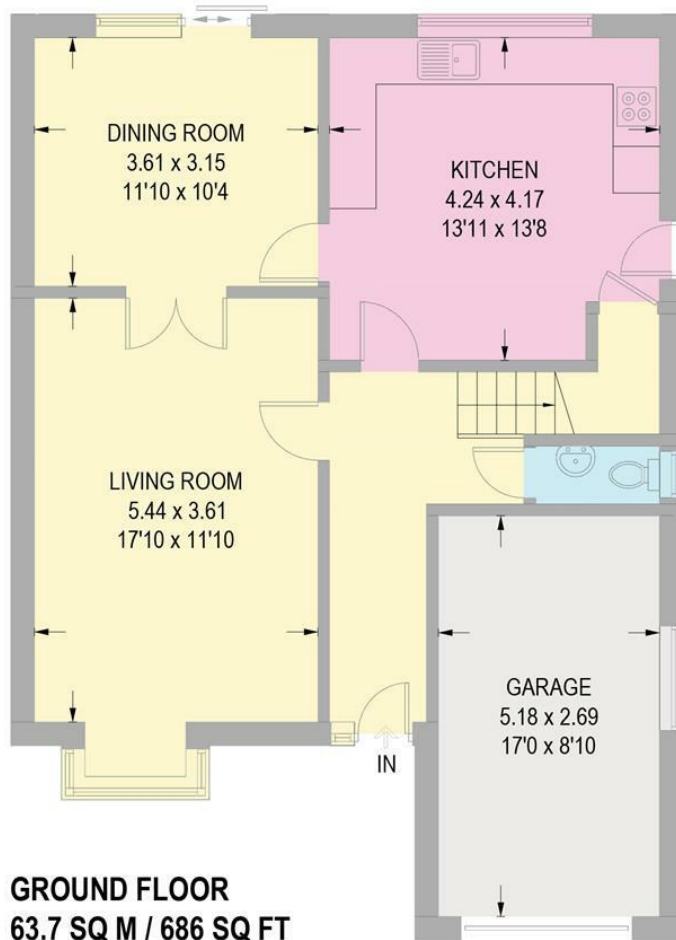


Illustration for identification purposes only,  
measurements are approximate, not to scale.

While we endeavour to make our sales particulars fair, accurate and reliable, they are only a general guide to the property and, accordingly, if there is any point, which is of particular importance to you, please contact the relevant office. The Agents have not tested any apparatus, equipment, fittings or services and so cannot verify they are in working order. The buyer is advised to obtain verification. Please note all the measurement details are approximate and should not be relied upon as exact. All plans, floor plans and maps are for guidance purposes only and are not to scale. Under no circumstances should they be relied upon as exact or for use in planning carpets and other such fixtures, fittings or furnishings. YOUR HOME IS AT RISK IF YOU DO NOT KEEP UP REPAYMENTS ON A MORTGAGE OR OTHER LOAN SECURED ON IT. 'A Life Assurance policy may be requested.' 'Written Quotations of credit terms available on request.'

Banner Cross  
T: 0114 268 3241  
E: [bannercross@saxtonmee.co.uk](mailto:bannercross@saxtonmee.co.uk)  
[www.saxtonmee.co.uk](http://www.saxtonmee.co.uk)

Dronfield  
T: 01246 290992  
E: [dronfield@saxtonmee.co.uk](mailto:dronfield@saxtonmee.co.uk)

Hathersage  
T: 01433 650009  
E: [hathersage@saxtonmee.co.uk](mailto:hathersage@saxtonmee.co.uk)

Bakewell  
T: 01629 815307  
E: [bakewell@saxtonmee.co.uk](mailto:bakewell@saxtonmee.co.uk)

Matlock  
T: 01629 828250  
E: [matlock@saxtonmee.co.uk](mailto:matlock@saxtonmee.co.uk)

**Saxton Mee**