



18 Springfield Road, Barlow, Dronfield, S18 7SR

Saxton Mee



# 18 Springfield Road

## Barlow

Offers In The Region Of

# £250,000

Requiring a scheme of modernisation, this nicely proportioned THREE BEDROOMED semi detached house has a very good size rear garden backing onto fields and farmland along with impressive views over the surrounding countryside.

Offering central heating and double glazing the property is conveniently placed for a host of local amenities within this increasingly sought after village of Barlow which itself is located on the doorstep of the Peak District National Park which stands within easy reach of Dronfield, Sheffield and Chesterfield. Reception hall, good size living/dining room with solid fuel fire which serves the central heating and hot water and French doors to the front garden. Fitted kitchen, rear hall/store with utility and downstairs WC. Opening off the landing on the first floor are two double bedrooms, single bedroom and wet room. Pull down loft ladder provides access to the attic space which is a most useful and versatile area with velux style rooflight taking full advantage of the impressive views.

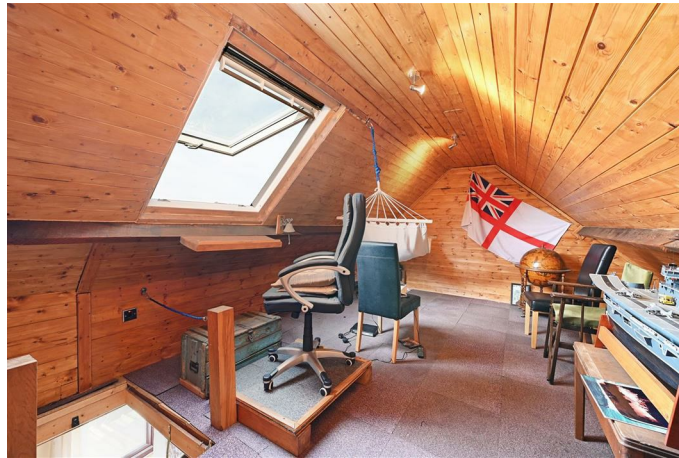
Gravelled driveway leads in via a five bar electric gate providing ample off road parking and access via twin doors to the lean to timber garage/store. Lawned front garden with the rear garden extending quite a way in depth and backing onto fields enjoying an excellent degree of privacy and includes log store and patio.



- Great position backing onto fields and farmland
- Impressive far reaching views
- Electric gates to gravelled driveway and lean to timber garage/store
- Living/dining room with solid fuel stove
- Three bedrooms, shower room and downstairs WC
- Versatile loft space
- Good size gardens to the front and rear
- Sought after semi rural village location
- EPC. tbc
- Freehold / Council Tax Band A









# 18 SPRINGFIELD ROAD

APPROXIMATE GROSS INTERNAL AREA = 134.0 SQ M / 1442 SQ FT  
(INCLUDING GARAGE )

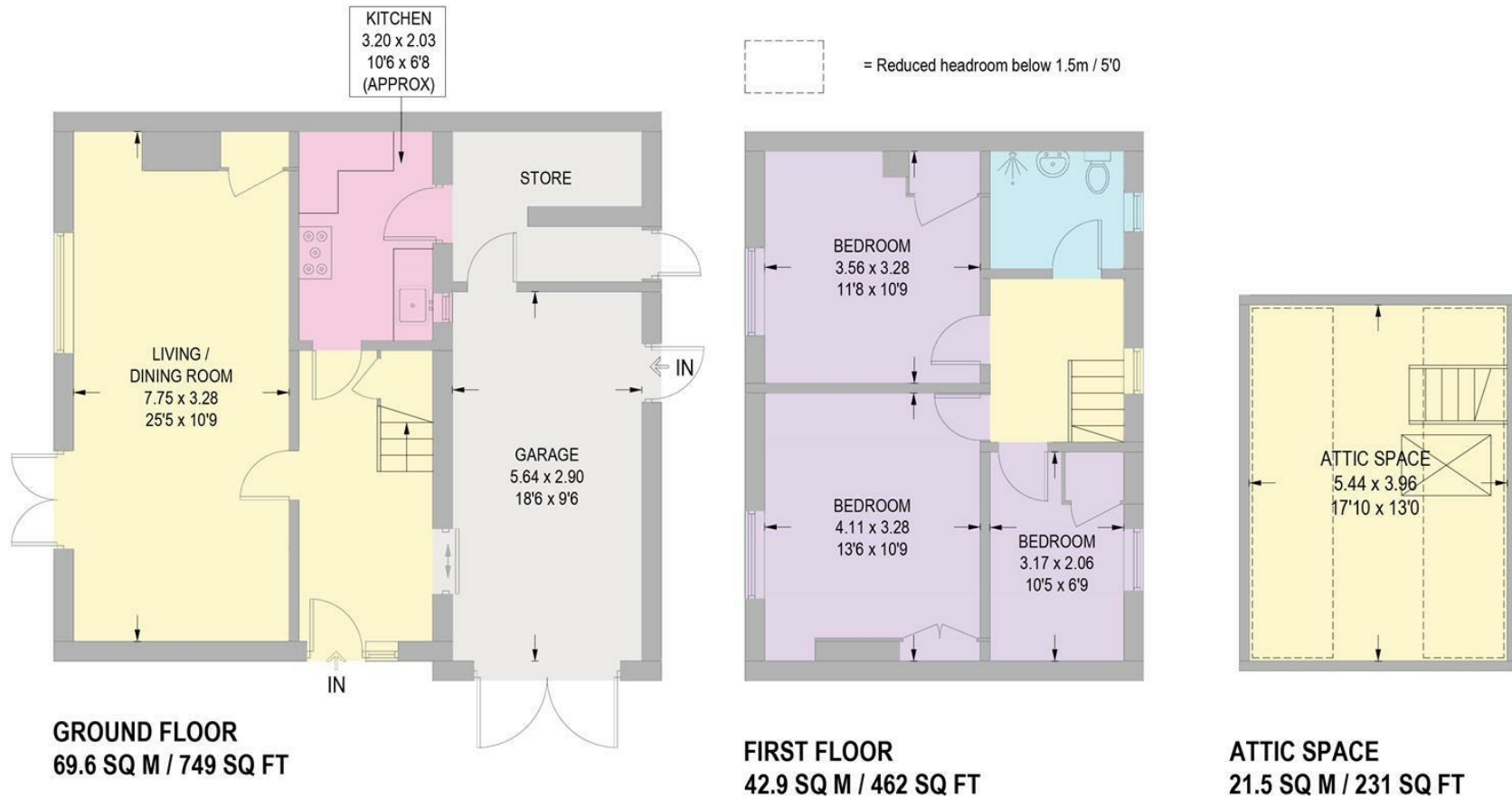


Illustration for identification purposes only,  
measurements are approximate, not to scale. (ID1176413)

While we endeavour to make our sales particulars fair, accurate and reliable, they are only a general guide to the property and, accordingly, if there is any point, which is of particular importance to you, please contact the relevant office. The Agents have not tested any apparatus, equipment, fittings or services and so cannot verify they are in working order. The buyer is advised to obtain verification. Please note all the measurement details are approximate and should not be relied upon as exact. All plans, floor plans and maps are for guidance purposes only and are not to scale. Under no circumstances should they be relied upon as exact or for use in planning carpets and other such fixtures, fittings or furnishings. YOUR HOME IS AT RISK IF YOU DO NOT KEEP UP REPAYMENTS ON A MORTGAGE OR OTHER LOAN SECURED ON IT. 'A Life Assurance policy may be requested.' 'Written Quotations of credit terms available on request.'

Banner Cross  
T: 0114 268 3241  
E: [bannercross@saxtonmee.co.uk](mailto:bannercross@saxtonmee.co.uk)  
[www.saxtonmee.co.uk](http://www.saxtonmee.co.uk)

Dronfield  
T: 01246 290992  
E: [dronfield@saxtonmee.co.uk](mailto:dronfield@saxtonmee.co.uk)

Hathersage  
T: 01433 650009  
E: [hathersage@saxtonmee.co.uk](mailto:hathersage@saxtonmee.co.uk)

Bakewell  
T: 01629 815307  
E: [bakewell@saxtonmee.co.uk](mailto:bakewell@saxtonmee.co.uk)

Matlock  
T: 01629 828250  
E: [matlock@saxtonmee.co.uk](mailto:matlock@saxtonmee.co.uk)

