



13 Netherdene Road
Dronfield
S18 1RR

Saxton Mee



13 Netherdene Road Dronfield, S18 1RR

This stunning three/four bedroomed semi detached house has been stylishly remodelled and considerably extended at the rear creating a most impressive and highly versatile home, perfect for family occupation.

Conveniently located within easy reach of renowned local schooling, parks and town centre, the property has undergone an extensive scheme of works to include new windows and doors, new gas fired central heating system, upgraded wiring along with new kitchen and bathroom fittings.

Good size reception hall, beautifully proportioned dining kitchen/family room which has bi-fold doors to the rear and roof lantern. The kitchen/dining area has an extensive range of units and appliances together with fitted booth seating. Fitted utility room, downstairs WC, Living room/bedroom four. First floor landing, master bedroom with built in wardrobes, second double bedroom, good size single bedroom and superb bathroom.

Drive with off road parking, access to the garage store/gym. Outstanding low maintenance rear garden with artificial grass, broad decked entertaining terrace with outside bar and seating. Useful garden store.

- Stylishly extended and beautifully appointed
- Refurbished throughout to a high standard
- Utility and downstairs WC
- Superb low maintenance rear garden
- EPC: C
- Outstanding three/four bedroomed family home
- impressive open plan dining kitchen/family room with bi-fold doors and roof lantern
- Additional living room/bedroom four
- Viewing recommended
- Council Tax Band: B Tenure:







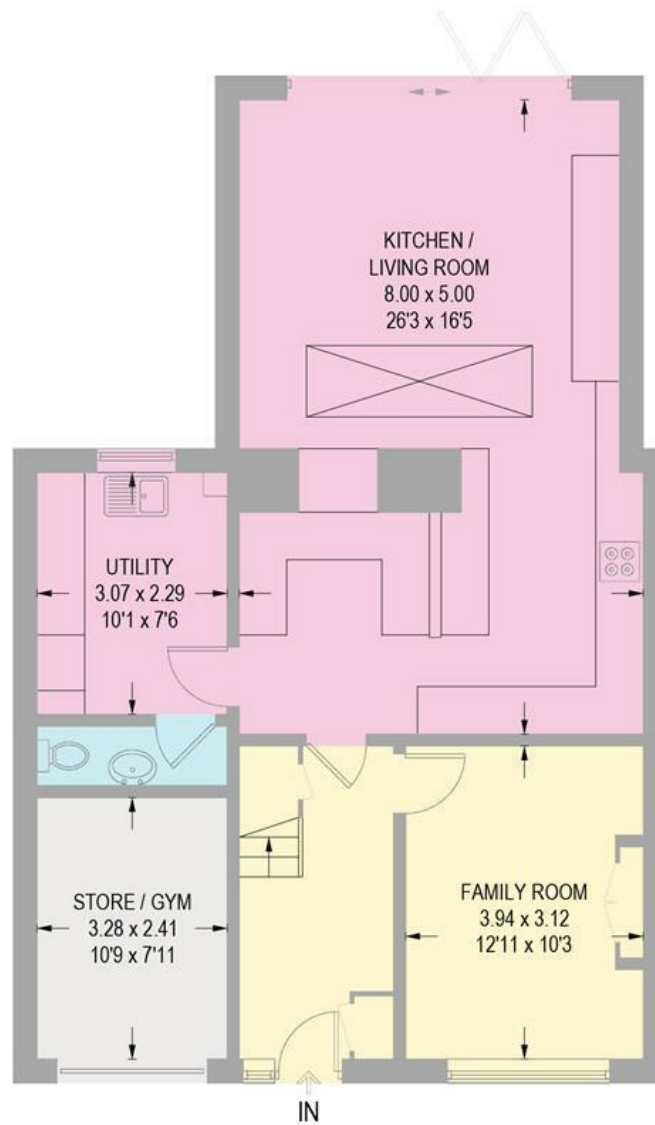


13 NETHERDENE ROAD

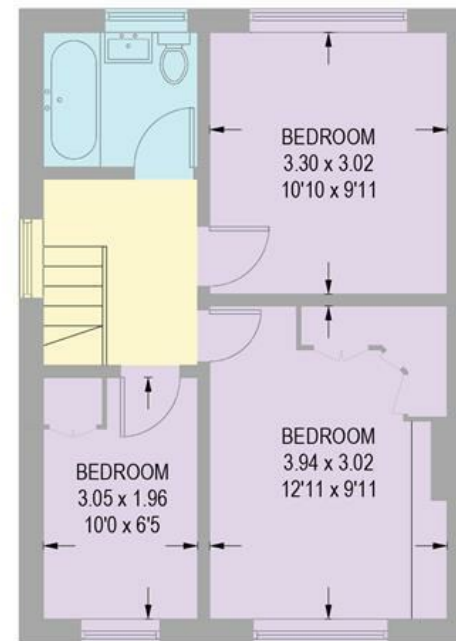
APPROXIMATE GROSS INTERNAL AREA = 108.7 SQ M / 1170 SQ FT

STORE / GYM = 7.9 SQ M / 85 SQ FT

TOTAL = 116.6 SQ M / 1255 SQ FT



GROUND FLOOR
71.0 SQ M / 764 SQ FT



FIRST FLOOR
37.7 SQ M / 406 SQ FT

Illustration for identification purposes only,
measurements are approximate, not to scale.