



27a Main Road, Cutthorpe, Chesterfield, Derbyshire, S42 7AJ

Saxton Mee



# 27a Main Road

## Cutthorpe

Offers Around

### £495,000

We are pleased to offer for sale this recently renovated three double bed roomed detached dormer bungalow which is favourably located in the sought after semi rural village of Cutthorpe with views across the cricket pitches.

The property has undergone a comprehensive scheme of refurbishment throughout to now offer a new kitchen and bathroom, re-wired, gas fired central heating boiler during recent years and decor throughout including floor coverings. The accommodation comprises of approx. 1435 sq ft and includes: entrance hall, spacious lounge with doors to dining area which has French doors leading onto the garden. Newly fitted kitchen with a range of integrated appliances and ceramic sink, rear lobby and walk in store which houses the combination boiler. Access into the garage. Ground floor double bedroom and family shower room. First floor landing, two large double bedrooms with eaves storage space and shower room/WC.

Set back from the road with lawns and having driveway parking and garage with access to the rear garden which is mainly laid to lawn having patio and shed.



- Three double bedrooms
- Two shower rooms
- Modern fitted kitchen and shower room
- Ample impressive accommodation
- New central heating
- Semi rural village location opposite the local cricket pitch
- Ease of access to both Chesterfield and Sheffield
- EPC: D
- Council Tax Band: D
- Freehold



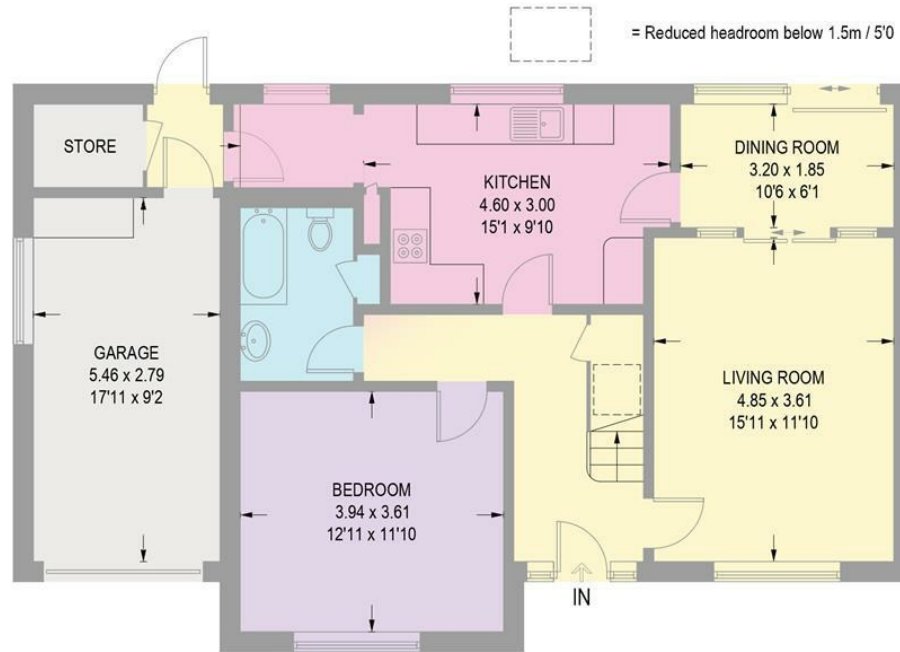




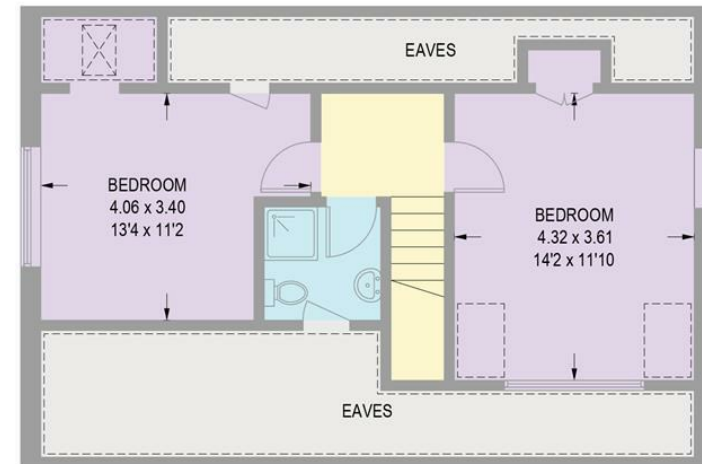


## 27A MAIN ROAD

APPROXIMATE GROSS INTERNAL AREA = 133.1 SQ M / 1433 SQ FT  
(INCLUDING GARAGE / EXCLUDING EAVES)



**GROUND FLOOR (INCLUDING GARAGE)**  
**93.0 SQ M / 1001 SQ FT**



**FIRST FLOOR**  
**40.1 SQ M / 432 SQ FT (EXCLUDING EAVES)**

Illustration for identification purposes only,  
measurements are approximate, not to scale.

While we endeavour to make our sales particulars fair, accurate and reliable, they are only a general guide to the property and, accordingly, if there is any point, which is of particular importance to you, please contact the relevant office. The Agents have not tested any apparatus, equipment, fittings or services and so cannot verify they are in working order. The buyer is advised to obtain verification. Please note all the measurement details are approximate and should not be relied upon as exact. All plans, floor plans and maps are for guidance purposes only and are not to scale. Under no circumstances should they be relied upon as exact or for use in planning carpets and other such fixtures, fittings or furnishings. YOUR HOME IS AT RISK IF YOU DO NOT KEEP UP REPAYMENTS ON A MORTGAGE OR OTHER LOAN SECURED ON IT. 'A Life Assurance policy may be requested.' 'Written Quotations of credit terms available on request.'

Banner Cross  
T: 0114 268 3241  
E: [bannercross@saxtonmee.co.uk](mailto:bannercross@saxtonmee.co.uk)  
[www.saxtonmee.co.uk](http://www.saxtonmee.co.uk)

Dronfield  
T: 01246 290992  
E: [dronfield@saxtonmee.co.uk](mailto:dronfield@saxtonmee.co.uk)

Hathersage  
T: 01433 650009  
E: [hathersage@saxtonmee.co.uk](mailto:hathersage@saxtonmee.co.uk)

Bakewell  
T: 01629 815307  
E: [bakewell@saxtonmee.co.uk](mailto:bakewell@saxtonmee.co.uk)

Matlock  
T: 01629 828250  
E: [matlock@saxtonmee.co.uk](mailto:matlock@saxtonmee.co.uk)

