



17 Heathfield Close
Dronfield
S18 1RJ

Saxton Mee



17 Heathfield Close, , Dronfield S18 1RJ

NO ONWARD CHAIN

Truly stunning, this most exceptional four bedroomed detached home is enviably located standing on a good size plot on a small sought after cul-de-sac.

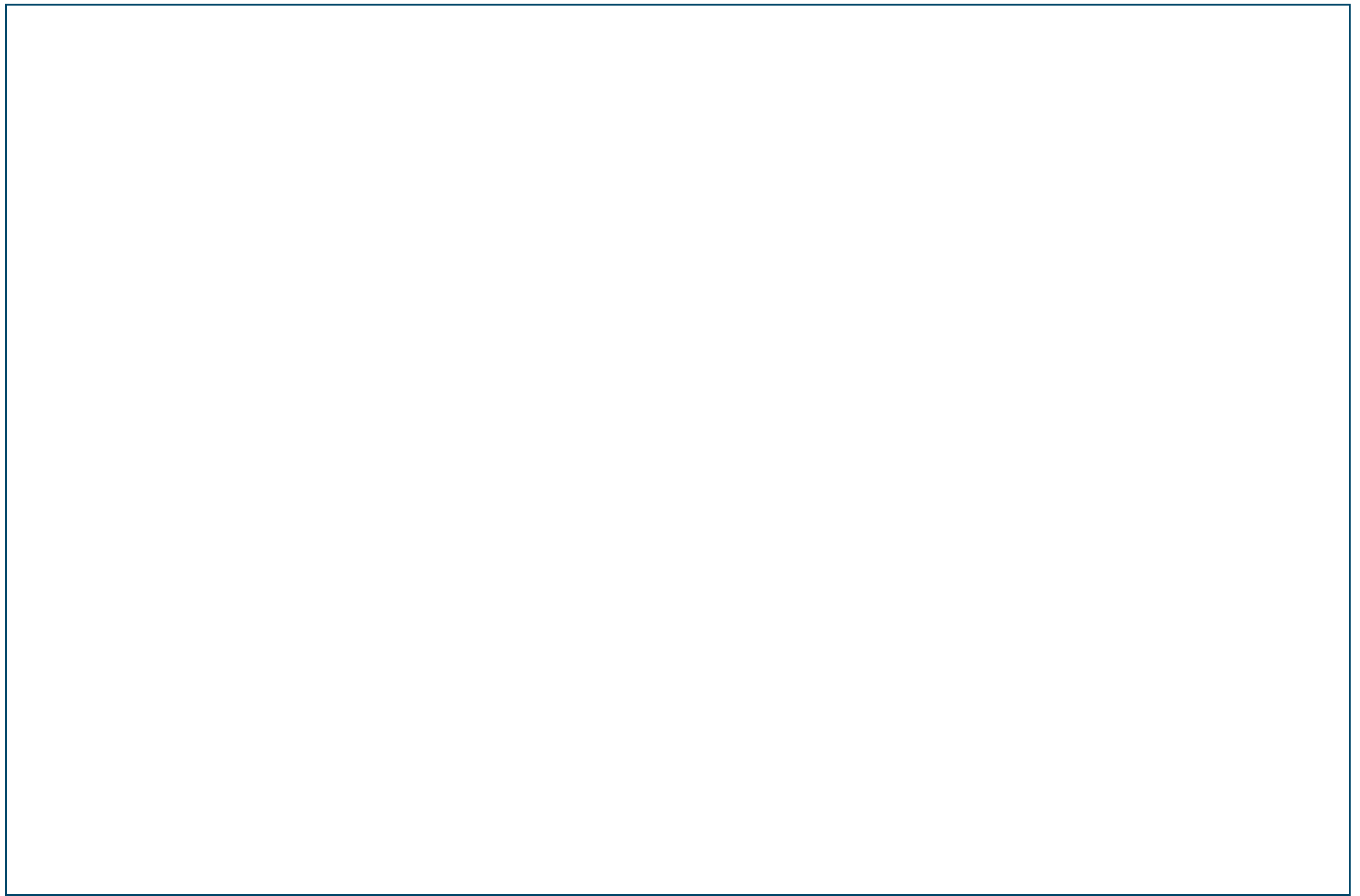
Stylishly refurbished to a very high standard during recent years this house is the perfect opportunity for a family to purchase a most impressive dwelling. Offering gas fired central heating and double glazing along with solar panels which considerably reduce the cost of the utility bills. The accommodation extends to 2013 sq ft and briefly comprises: entrance lobby with personnel door to the garage, downstairs WC, inner hall with staircase to the first floor, outstanding contemporary kitchen fitted by Chris Fields Designs during relatively recent years, beautifully proportioned living room which opens through to the dining room which has French doors to the garden.

First floor landing, large master bedroom with stunning en-suite shower room, three further double bedrooms and an excellent family shower room.

Block paved driveway provides ample parking for numerous vehicles and access to the integral garage which is currently used as a home gym and is partially sub divided with a most useful store room. The rear garden is an outstanding feature, professionally landscaped comprising of a broad porcelain entertaining terrace with dwarf walling, centre steps, level lawn. At a lower level there is a artificial grass "putting green" with a home office/studio/bar.

- Impressive four bedroomed detached house
- Contemporary fitted kitchen and luxurious en-suite
- Sought after cul-de-sac location
- Stylishly refurbished
- Council Tax Band: E - Freehold - EPC:
- Spacious accommodation and private gardens with studio/bar and "putting green"
- Ample parking and integral garage (currently used as a gym)
- Solar panels generate approx £2,000 a year
- Philips Hue Smart Lighting for the garden - front & rear
- No onward chain









17 HEATHFIELD CLOSE

APPROXIMATE GROSS INTERNAL AREA = 177 SQ M / 1905 SQ FT

GARDEN ROOM = 10.0 SQ M / 108 SQ FT

TOTAL = 187 SQ M / 2013 SQ FT

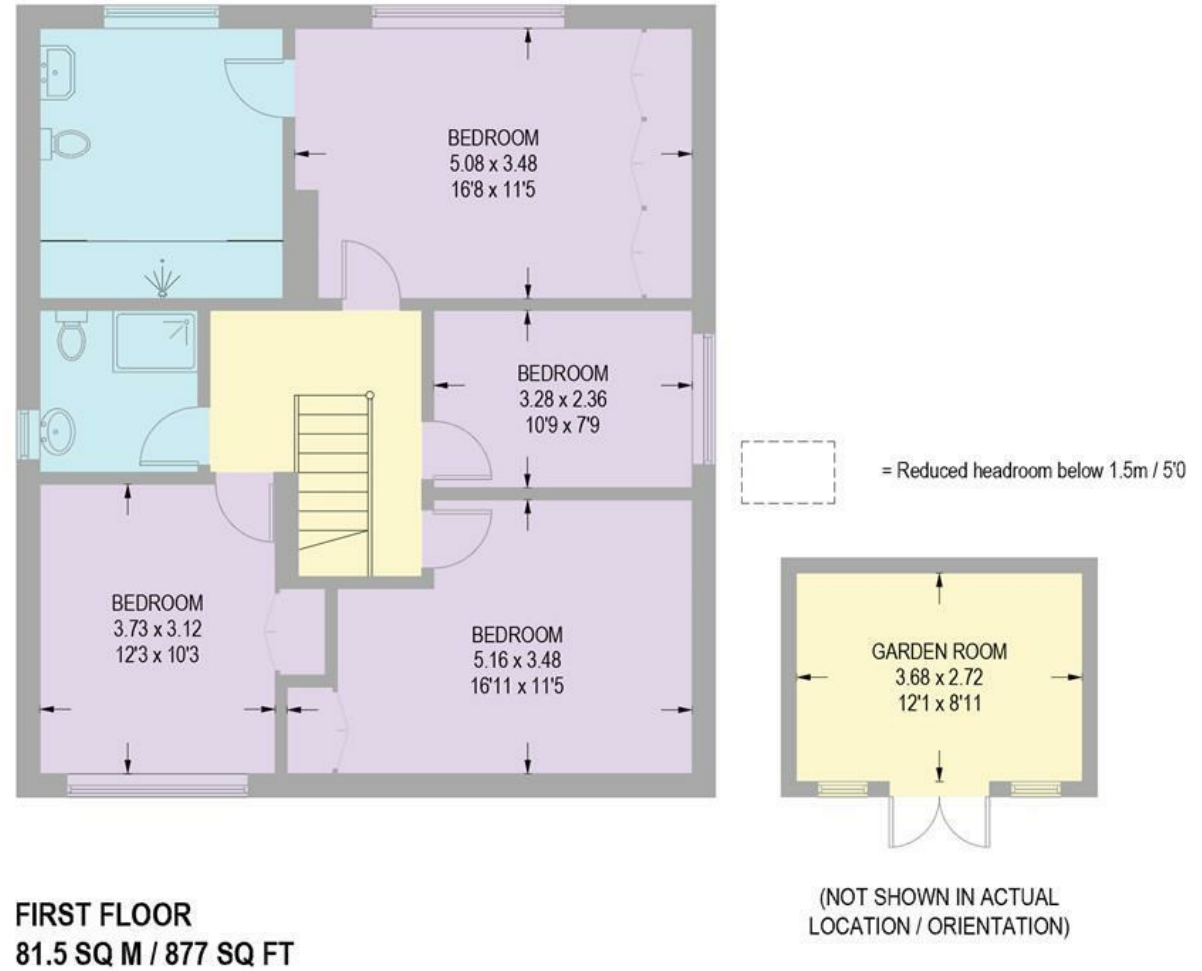
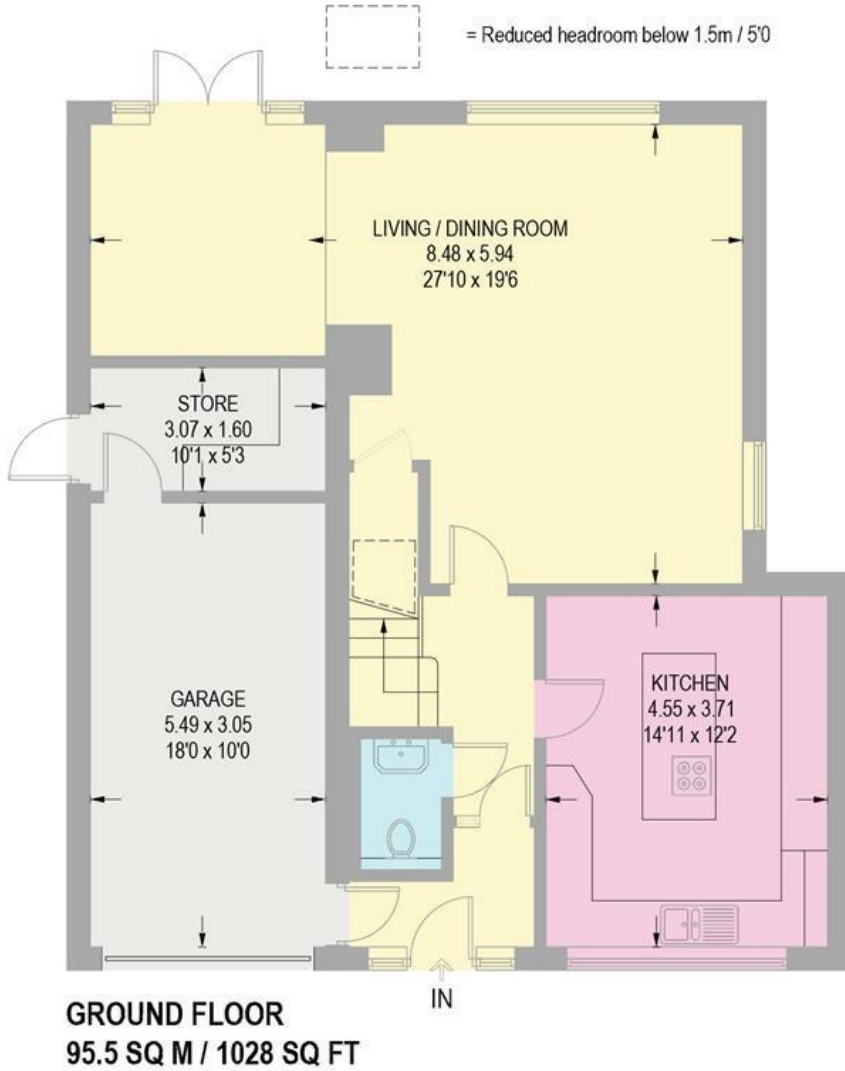


Illustration for identification purposes only,
measurements are approximate, not to scale.