



12 Solway Rise, Dronfield Woodhouse, Dronfield, S18 8ZR



12 Solway Rise

Dronfield Woodhouse

Price Guide

£580,000

Guide price £580,000 - £600,000

Beautifully proportioned, this five/six bed roomed and three bathroomed house has been considerably extended and is the perfect opportunity to acquire a spacious home with dependant relative living accommodation on the ground floor.

Tucked away at the head of a small exclusive cul-de-sac this superb property stands on a good sized corner plot with the benefit of gardens to three sides. Offering gas fired central heating and uPVC double glazing the property must be viewed to be appreciated and briefly comprises; porch, hall, downstairs WC, spacious living room, separate dining room which lends itself to be opened through to the adjacent fitted kitchen, excellent conservatory/sun room, inner hallway, additional sitting room/bedroom and excellent shower room. First floor landing, large master bedroom with en-suite shower room, four further good size bedrooms and family bathroom.

Drive with off road parking for up to four vehicles, integral garaging, attractively set out private gardens with lawns and patio seating area.



- Superbly proportioned
- Five/six bedrooms and three/four reception rooms
- Ideal for family with dependant relative/teenager accommodation
- Considerably extended to the side and rear
- Sought after location
- Good size corner plot
- Renowned nearby local schooling
- Gas central heating and double glazing
- Viewing highly recommended
- EPC: D - Council Tax Band : E Tenure : Leasehold





12 SOLWAY RISE

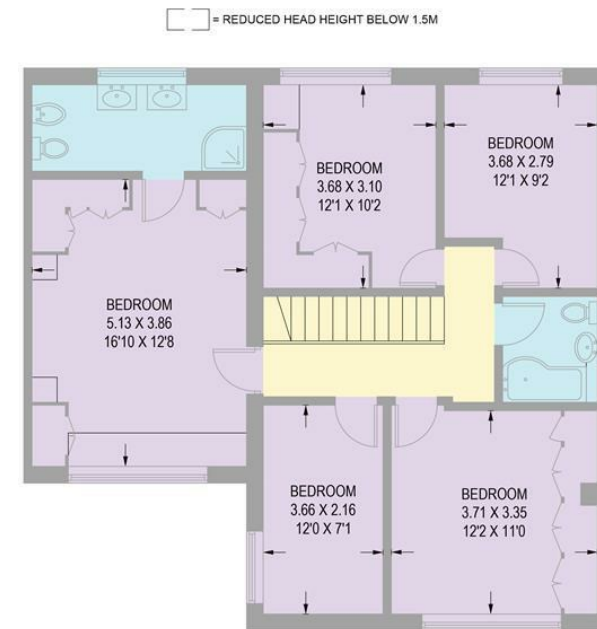
APPROXIMATE GROSS INTERNAL AREA = 192.8 SQ M / 2075 SQ FT

GARAGE = 12.1 SQ M / 130 SQ FT

TOTAL = 204.9 SQ M / 2205 SQ FT



GROUND FLOOR
107.4 SQ M / 1156 SQ FT



FIRST FLOOR
85.4 SQ M / 919 SQ FT

Illustration for identification purposes only,
measurements are approximate, not to scale. (ID1105725)

While we endeavour to make our sales particulars fair, accurate and reliable, they are only a general guide to the property and, accordingly, if there is any point, which is of particular importance to you, please contact the relevant office. The Agents have not tested any apparatus, equipment, fittings or services and so cannot verify they are in working order. The buyer is advised to obtain verification. Please note all the measurement details are approximate and should not be relied upon as exact. All plans, floor plans and maps are for guidance purposes only and are not to scale. Under no circumstances should they be relied upon as exact or for use in planning carpets and other such fixtures, fittings or furnishings. YOUR HOME IS AT RISK IF YOU DO NOT KEEP UP REPAYMENTS ON A MORTGAGE OR OTHER LOAN SECURED ON IT. *A Life Assurance policy may be requested.* *Written Quotations of credit terms available on request.*