



Hagg House  
Snake Road  
Ladybower  
Hope Valley  
S33 0BJ

Saxton Mee







Hagg House Snake Road,  
Ladybower, Hope Valley S33 0BJ  
£850,000

Stunningly refurbished by the present owners, this truly impressive classic Victorian house enjoys breathtaking views towards the rear of Kinder Scout and the surrounding Peak Park. Formerly part of the Chatsworth Estate, dating back to 1861 with a dramatic woodland backdrop, this beautiful property is set well back from the road, only a stones throw from Ladybower and Derwent Reservoirs.

The stylish interior has been sympathetically restored to an exceptionally high standard. There is a new central heating system via the Ideal boiler, shutters to the inside of the period style sash windows, with the spacious accommodation briefly comprising: generous tiled hallway, outstanding entertaining dining kitchen, beautifully appointed with a range of units and Quartz working surfaces complimented by a four oven Aga. Lovely stone fireplace with log burning stove, tiled flooring throughout. Large central island. Separate utility room, again beautifully fitted along with a superb adjacent shower room with WC. Lounge with ornate French log burning stove and views over the South Easterly facing garden. First floor landing with the master bedroom having superb built in wardrobes to one wall, two further double bedrooms and study/nursery. Stunning bathroom with free standing bath, his and her washbasins and separate shower enclosure along with underfloor heating.

Substantial outside space of just under 1/4 of an acre which is approached by a long driveway (shared with the neighbouring Hagg Farm Outdoor Centre) and leads in to a large gravelled courtyard with ample off road private parking for several vehicles and excellent double garage. The garden extends primarily to the front being set down mainly to lawn with stone flagged and gravelled pathways and entertaining areas ideal for al-fresco dining which take full advantage of the breathtaking scenery.

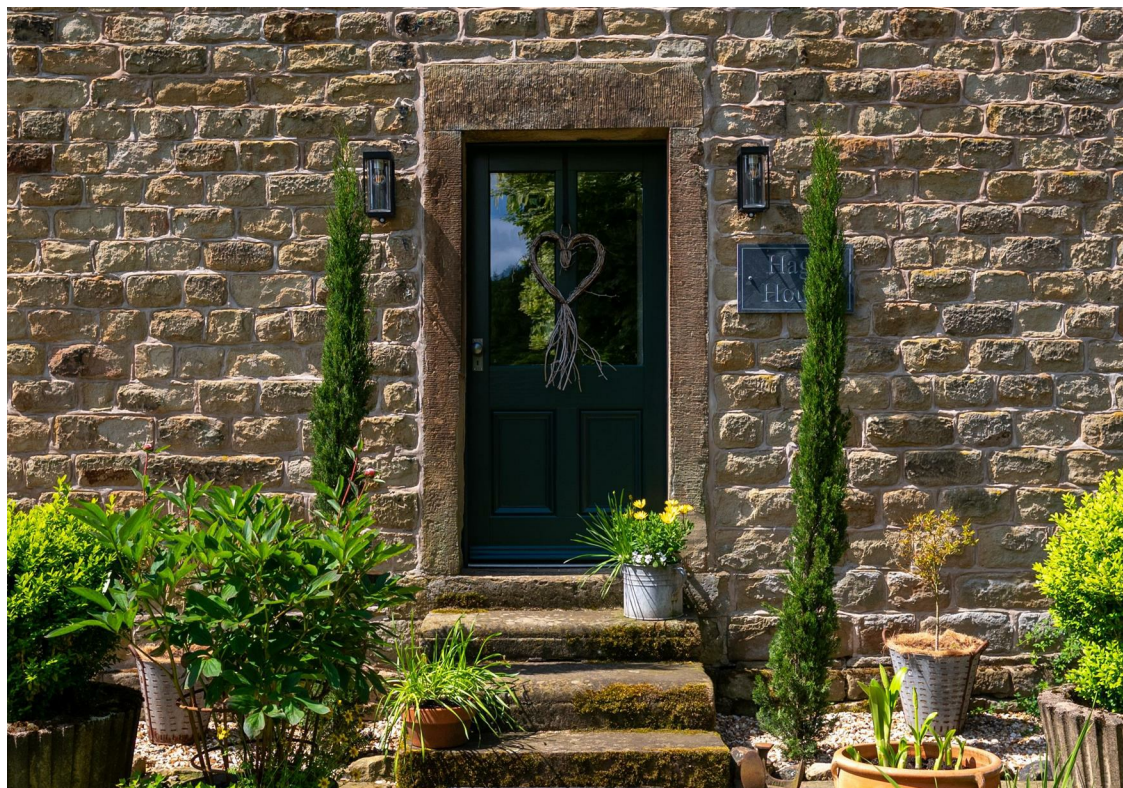
- Truly stunning stone built Victorian house dating back to 1861
- Situated close to Ladybower and Derwent Reservoirs - haven for cyclists, walkers, climbers and water sports enthusiasts
- Re-plastered throughout along with a new central heating system
- Away from the main thoroughfare with long drive, double garage and parking for numerous vehicles
- Three excellent double bedrooms along with study/nursery
- Magnificent elevated position with breathtaking views and woodland backdrop
- Stylishly refurbished to an extremely high standard - plans drawn up for large orangery (available on request)
- Impressive open plan entertaining dining / living kitchen area with log burner and central island
- Attractive good size gardens of approx. 1/4 of an acre with stone flagged and gravelled entertaining areas
- EPC: tbc / Freehold / Council Tax Band F















Hagg  
House

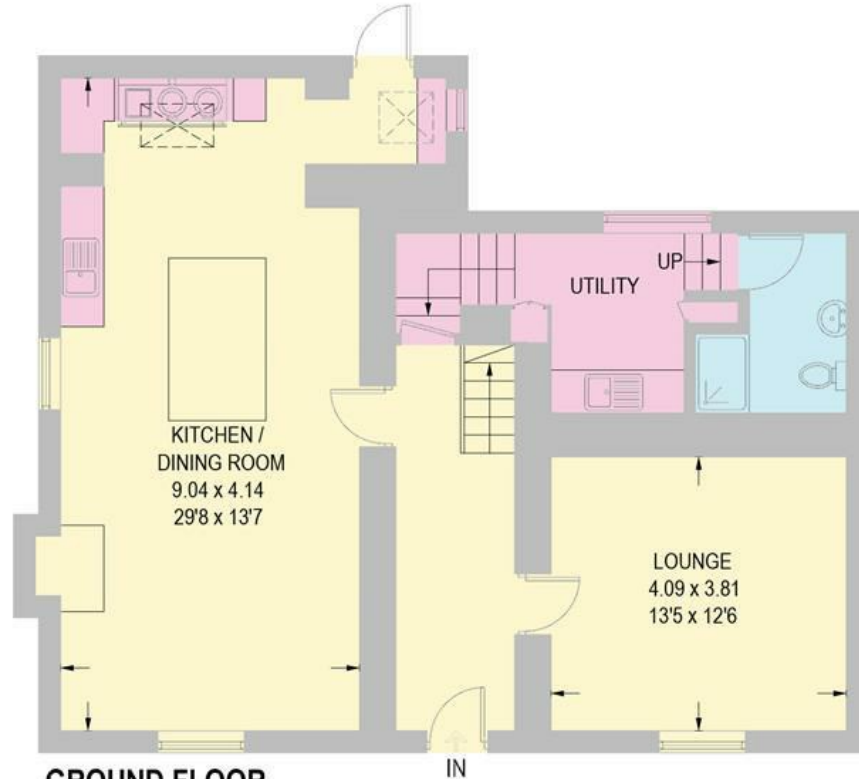


# HAGG HOUSE, SNAKE ROAD

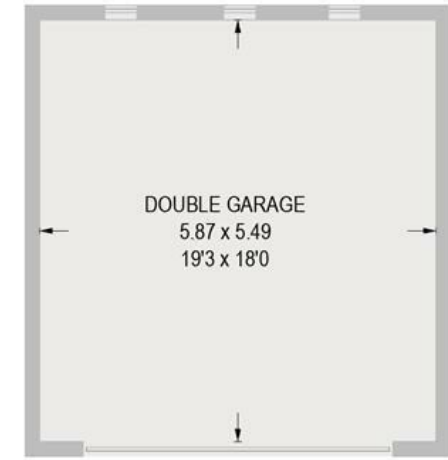
APPROXIMATE GROSS INTERNAL AREA = 161.3 SQ M / 1736 SQ FT

DOUBLE GARAGE = 32.2 SQ M / 346 SQ FT

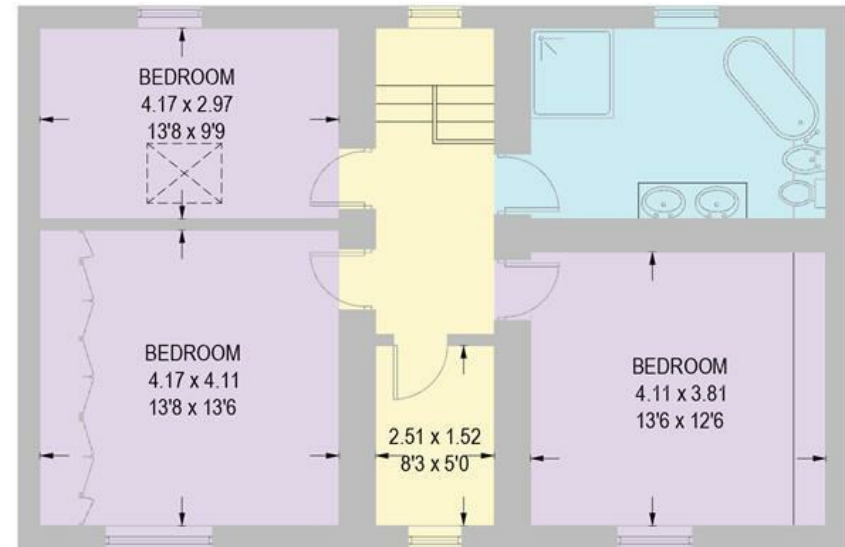
TOTAL = 193.5 SQ M / 2082 SQ FT



**GROUND FLOOR**  
86.1 SQ M / 927 SQ FT



(NOT SHOWN IN ACTUAL  
LOCATION / ORIENTATION)



**FIRST FLOOR**  
75.2 SQ M / 809 SQ FT

Illustration for identification purposes only,  
measurements are approximate, not to scale.