



Orchard Cottage Palterton Lane, Sutton Scarsdale, Chesterfield,



Orchard Cottage Palterton Sutton Scarsdale

£700,000

A most appealing THREE/FOUR bedroomed DETACHED COTTAGE set on a plot of almost an acre in a delightful rural location, yet only a few miles from Chesterfield town centre and the M1 motorway network link at junction 29 or 29a.

The property is believed to date back to the mid-1800's and benefits from a private gated drive, ample parking and delightfully large south facing gardens.

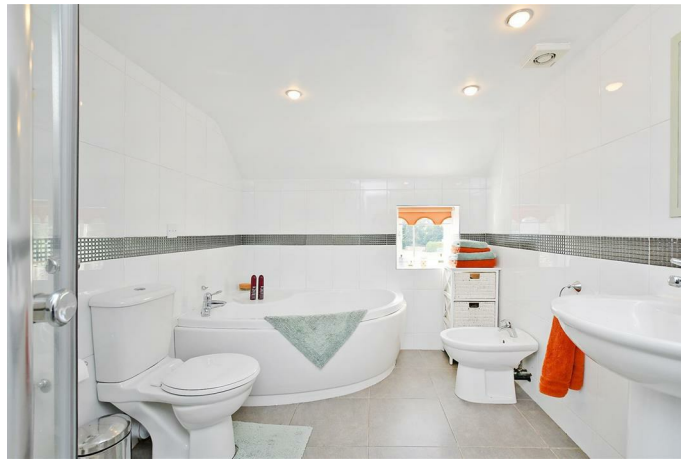
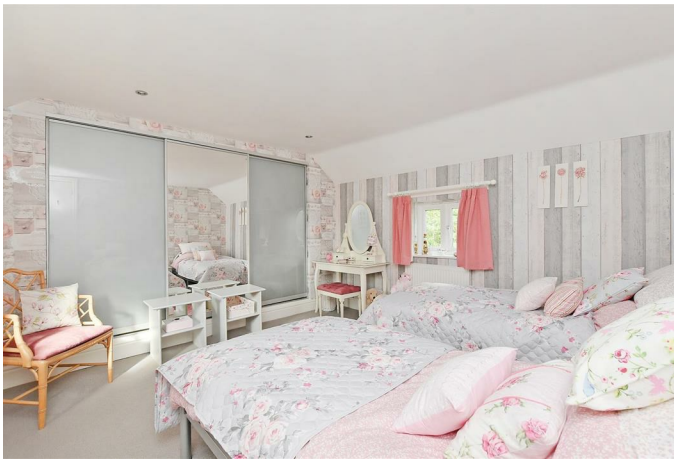
The property has generally been well maintained but could do with some updating and offers an LPG gas fired central heating boiler and double glazing the property briefly comprises; spacious entrance, downstairs WC, utility, large well equipped breakfast kitchen/ dining room, beautifully proportioned living room, excellent conservatory and snug/study. First floor landing, master bedroom with en suite dressing room and spacious en suite bathroom with separate shower, double bedroom two (which could easily be split and sub-divided to form a fourth bedroom), double bedroom three, shower room.

Sweeping gravelled drive, large double attached garage, beautiful south facing gardens. Large patio seating terrace ideal for entertaining.



- Most appealing period cottage
- Superbly proportioned (3,000 sq ft) accommodation
- Approx 1 acre plot - rural location
- Currently three double bedrooms (although one could easily be sub-divided to make 4)
- Beautiful south facing private gardens and large sun terrace
- Ample parking
- Detached double garage
- Viewing recommended
- Some upgrading required
- Freehold / Council Tax Band: F





ORCHARD COTTAGE

APPROXIMATE GROSS INTERNAL AREA = 277 SQ M / 2982 SQ FT
(INCLUDING GARAGE)

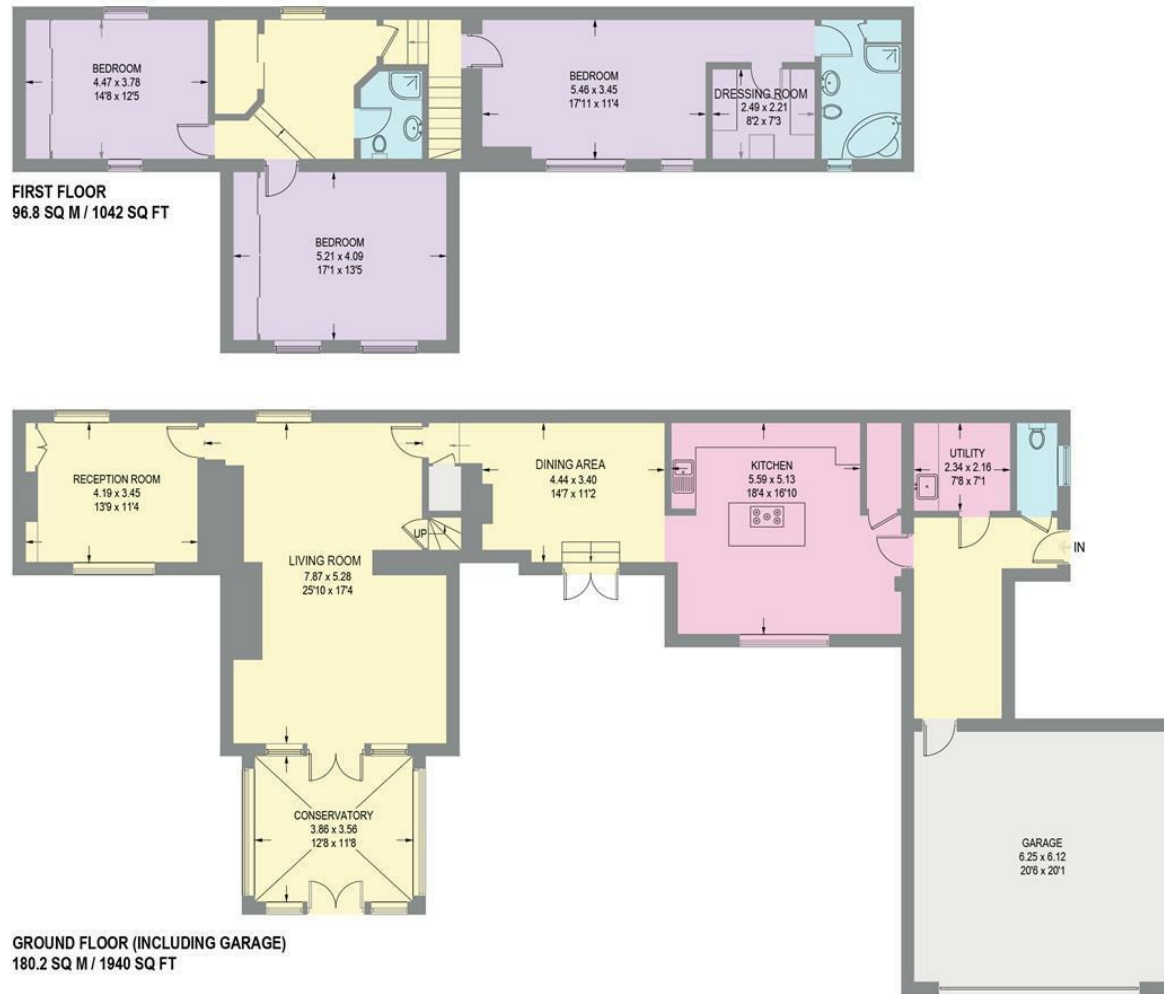


Illustration for identification purposes only, measurements are approximate, not to scale.

While we endeavour to make our sales particulars fair, accurate and reliable, they are only a general guide to the property and, accordingly, if there is any point, which is of particular importance to you, please contact the relevant office. The Agents have not tested any apparatus, equipment, fittings or services and so cannot verify they are in working order. The buyer is advised to obtain verification. Please note all the measurement details are approximate and should not be relied upon as exact. All plans, floor plans and maps are for guidance purposes only and are not to scale. Under no circumstances should they be relied upon as exact or for use in planning carpets and other such fixtures, fittings or furnishings. YOUR HOME IS AT RISK IF YOU DO NOT KEEP UP REPAYMENTS ON A MORTGAGE OR OTHER LOAN SECURED ON IT. 'A Life Assurance policy may be requested.' 'Written Quotations of credit terms available on request.'

Banner Cross
T: 0114 268 3241
E: bannercross@saxtonmee.co.uk
www.saxtonmee.co.uk

Dronfield
T: 01246 290992
E: dronfield@saxtonmee.co.uk

Hathersage
T: 01433 650009
E: hathersage@saxtonmee.co.uk

Bakewell
T: 01629 815307
E: bakewell@saxtonmee.co.uk

Matlock
T: 01629 828250
E: matlock@saxtonmee.co.uk

