



11 Snelston Close, Dronfield Woodhouse, Dronfield, Derbyshire, S18 8RH

Saxton Mee

11 Snelston Close

Dronfield Woodhouse

Offers Around

£210,000

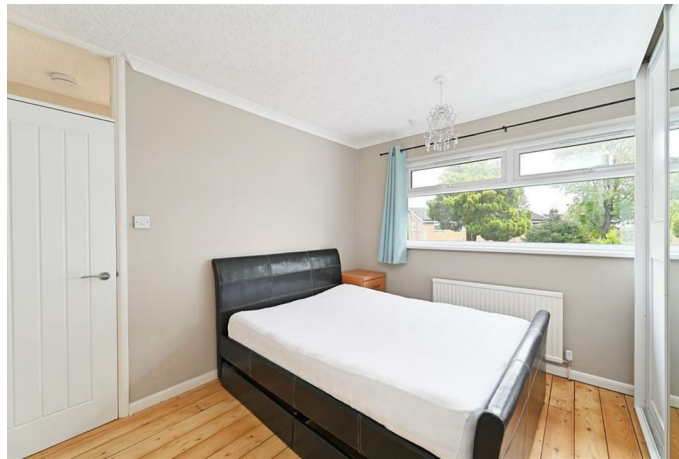
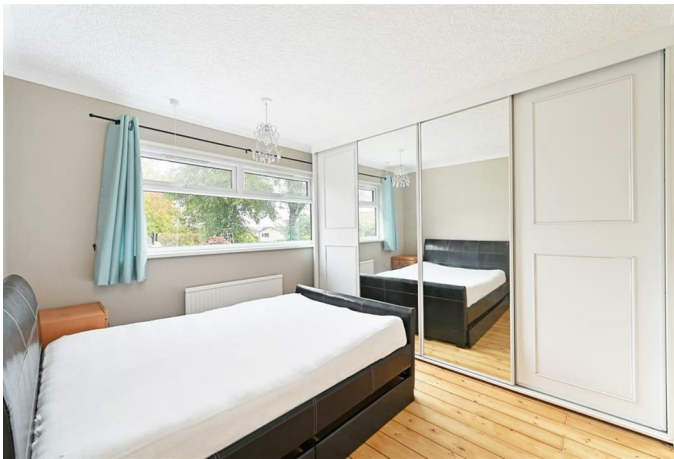
A superb opportunity to acquire an exceptionally well located TWO BEDROOMED semi detached bungalow which occupies an unusually LARGE PLOT with a very good sized rear garden.

Standing only a few hundred yards from the nearby park along with the shopping facilities off Pentland Road and local amenities such as a GP's, Pharmacy, Opticians, Dentists, pub, small supermarket and regular bus service. Offering gas fired central heating along with uPVC double glazing the property is perfect for the retired and briefly comprises: fitted kitchen, good sized living room, sun porch with useful store cupboard, inner hall with cupboard housing the boiler, double bedroom one with fitted wardrobes, bedroom two/dining room, bathroom with white suite.

Shared driveway, off road parking and semi detached single garage. Attractive unusually large rear garden for this type of property.

- No upward chain
- Most conveniently situated
- Very good size rear garden
- Gas central heating & uPVC double glazing
- Close to park
- Nearby shops and bus service
- Viewing recommended
- EPC - D
- Viewing via Dronfield office
- Council Tax Band B





11 SNELSTON CLOSE

APPROXIMATE GROSS INTERNAL AREA = 56.4 SQ M / 607 SQ FT
GARAGE = 12.6 SQ M / 136 SQ FT
TOTAL = 69 SQ M / 743 SQ FT

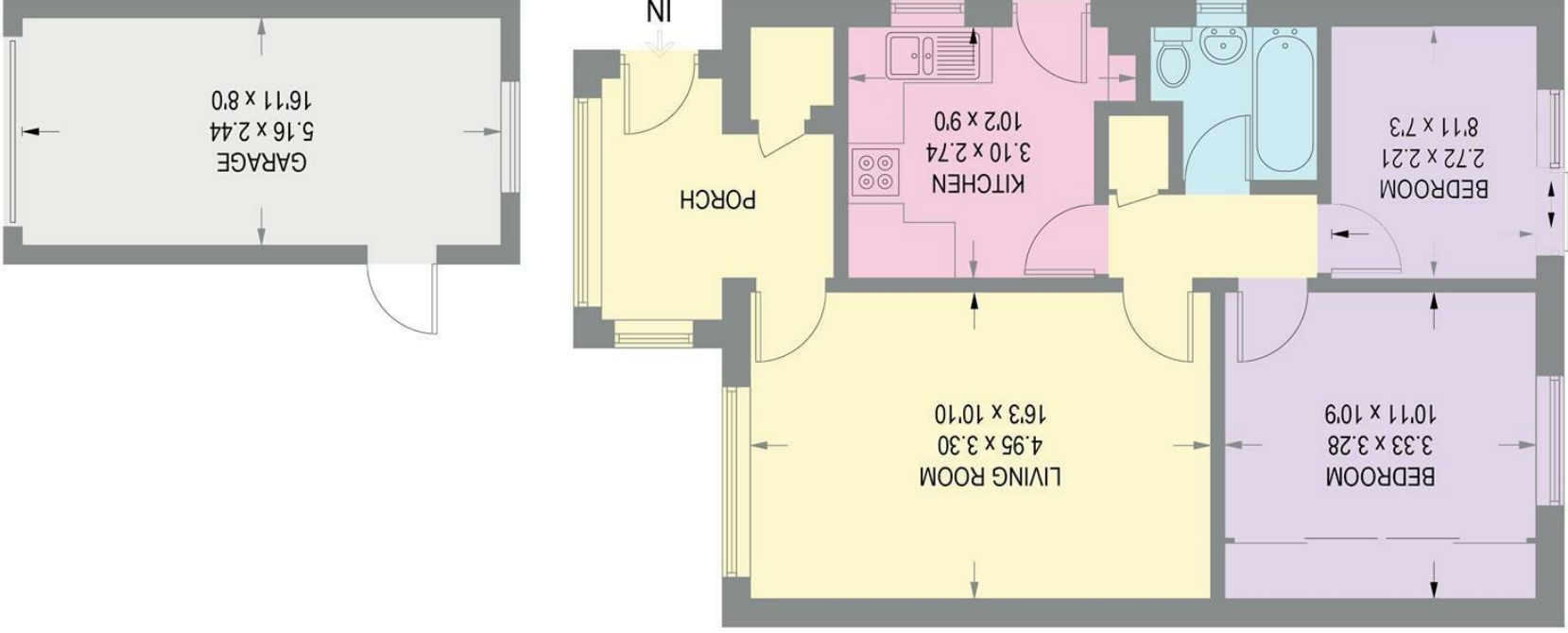


Illustration for identification purposes only, measurements are approximate, not to scale.

(NOT SHOWN IN ACTUAL
LOCATION / ORIENTATION)

While we endeavour to make our sales particulars fair, accurate and reliable, they are only a general guide to the property and, accordingly, if there is any point, which is of particular importance to you, please contact the relevant office. The Agents have not tested any apparatus, equipment, fittings or services and so cannot verify they are in working order. The buyer is advised to obtain verification. Please note all the measurement details are approximate and should not be relied upon as exact. All plans, floor plans and maps are for guidance purposes only and are not to scale. Under no circumstances should they be relied upon as exact or for use in planning carpets and other such fixtures, fittings or furnishings. YOUR HOME IS AT RISK IF YOU DO NOT KEEP UP REPAYMENTS ON A MORTGAGE OR OTHER LOAN SECURED ON IT. A Life Assurance policy may be requested. Written Quotations of credit terms available on request.

www.saxtonmee.co.uk

E: bannercross@saxtonmee.co.uk

T: 0114 268 3241

Banner Cross

E: dronfield@saxtonmee.co.uk

T: 01246 290992

Dronfield

E: hathersage@saxtonmee.co.uk

T: 01433 650009

Hathersage

E: bakewell@saxtonmee.co.uk

T: 01629 815307

Bakewell

E: matlock@saxtonmee.co.uk

T: 01629 828250

Matlock

Saxton Mee