



Plot 4 Fayre Fields, Loxwood
£490,000



ROGER COUPE
LAND & NEW HOMES



Plot 4 Fayre Fields

off Willetts Way, Loxwood

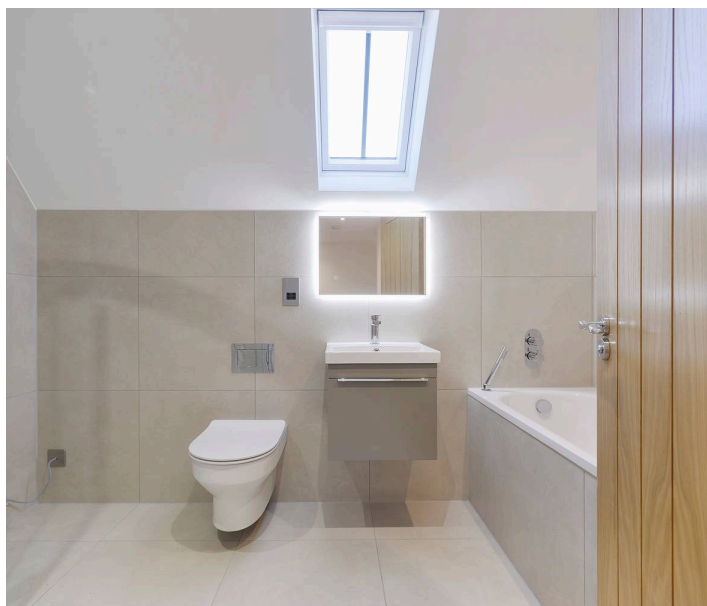
- Superb specification
- Attractive designs and sleek interiors
- Parking for two cars
- Stunning, spacious two double bedroom new home
- View home now open - contact to book a visit
- Ready to move in
- Niche house builder Mattwell Homes
- Prices from £490,000 to £775,000

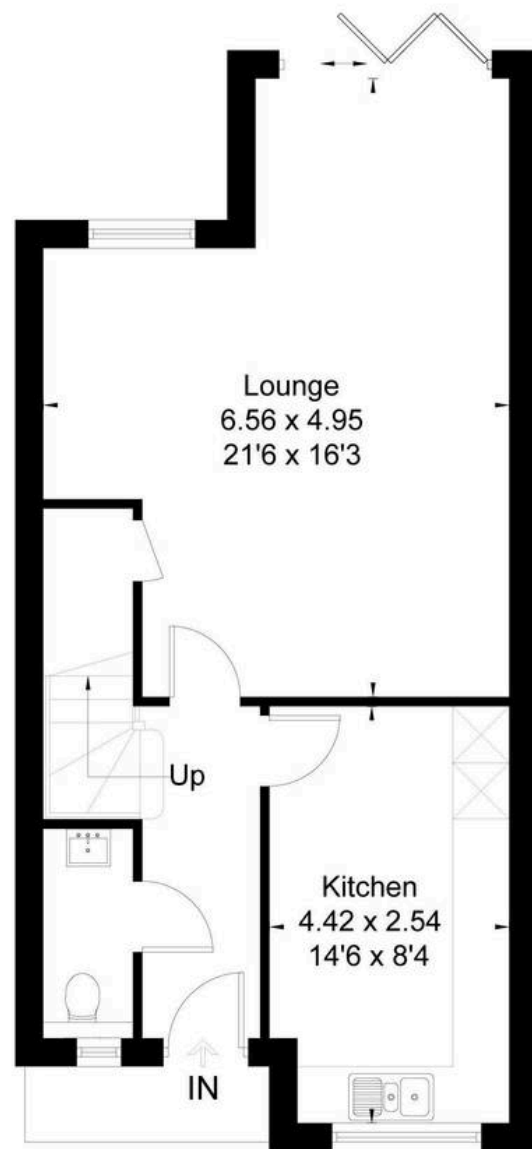
Council Tax band: TBD

Tenure: Freehold

EPC Energy Efficiency Rating:


EPC Environmental Impact Rating:

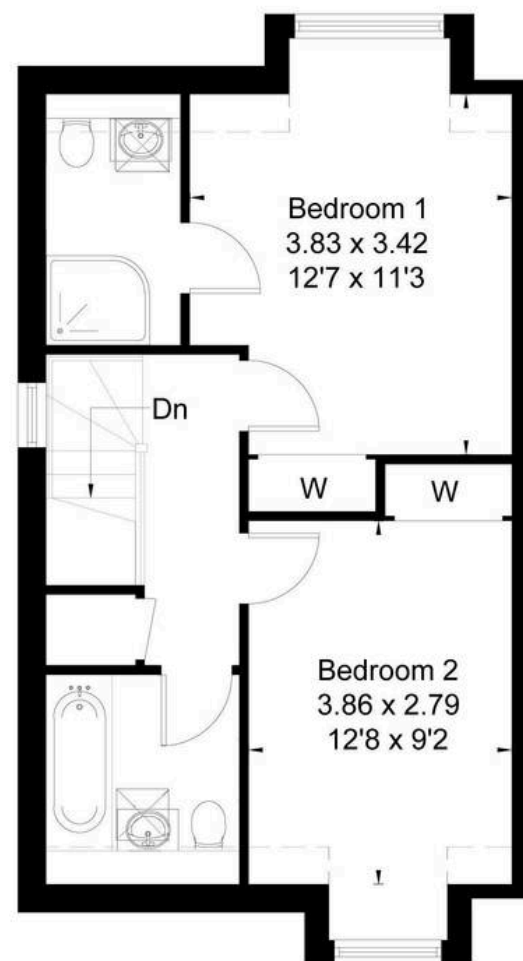




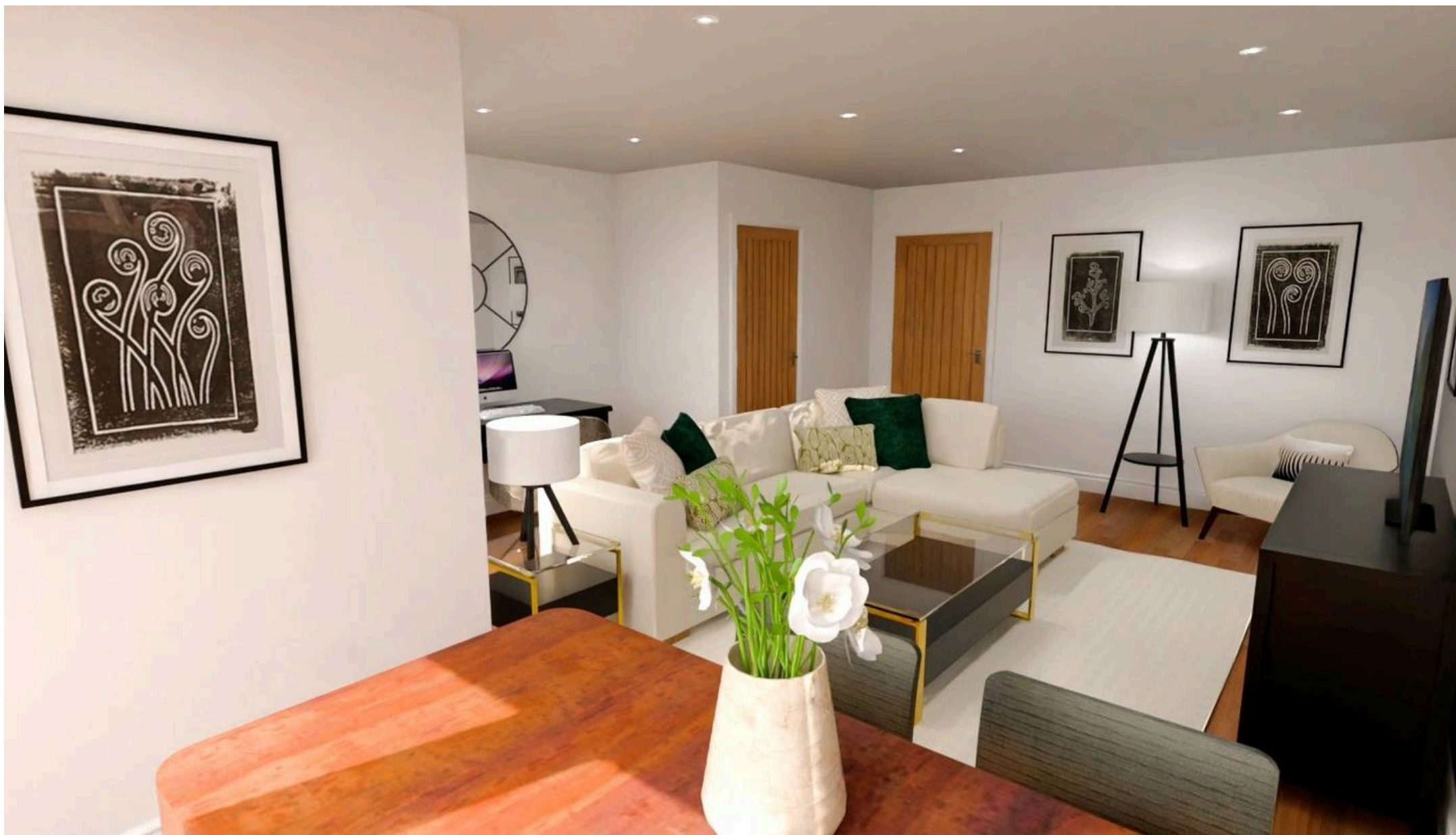
Ground Floor

Plot 4

 = Reduced head height below 1.5m



First Floor



Roger Coupe Estate Agent

Roger Coupe Estate Agent, 151 High Street - GU6 8BB

01483268555 • housesales@rogercoupe.com • www.rogercoupe.com



For clarification, these sales particulars have been prepared as a general guide. Room sizes are approximate and we have not carried out a detailed survey, nor tested any appliances, equipment, fixtures or services, so cannot verify that they are in working order, or fit for their purpose.