



Plot 20 - The Bridgewater at Alfold Gardens, GU6 8JE

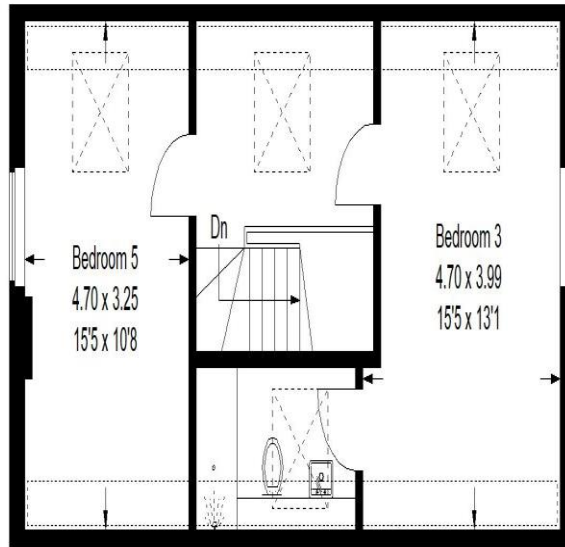
£1,350,000 - Freehold

EPC Rating: TBC

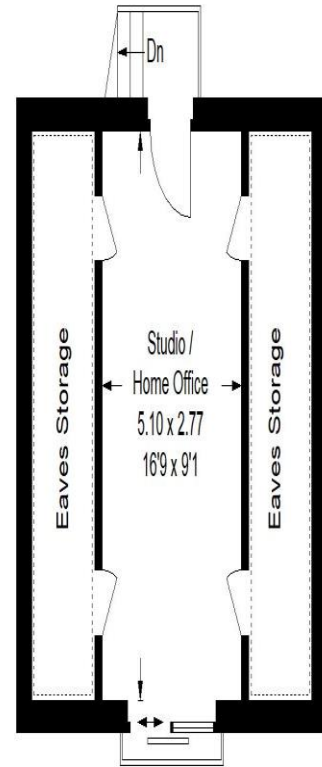


Alfold Gardens, Alfold

Approximate Gross Internal Area
 Ground Floor = 70.8 sq m / 762 sq ft
 First Floor = 70.1 sq m / 754 sq ft
 Second Floor = 49.8 sq m / 536 sq ft
 Garage Ground Floor = 29.1 sq m / 313 sq ft
 Garage First Floor = 29.5 sq m / 317 sq ft
 Total = 249.3 sq m / 2682 sq ft

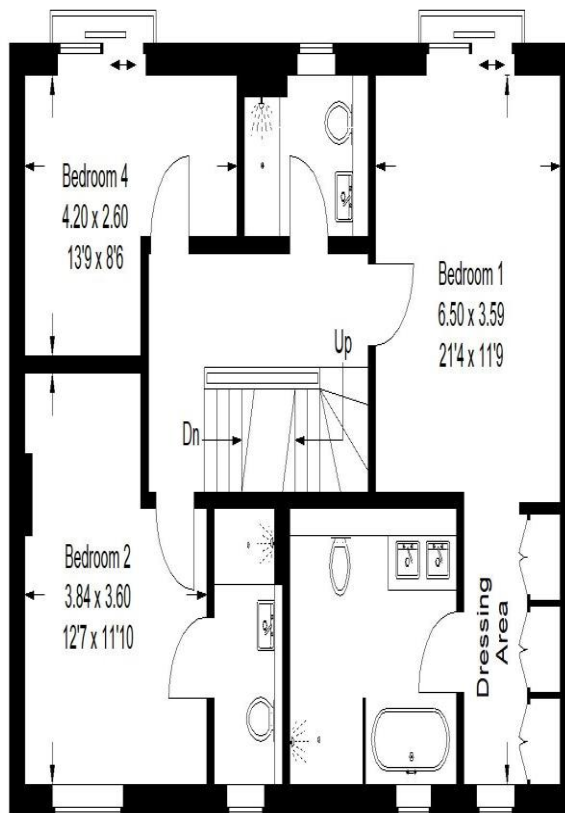


Second Floor



Garage First Floor

= Reduced headroom below 1.5 m / 5'0

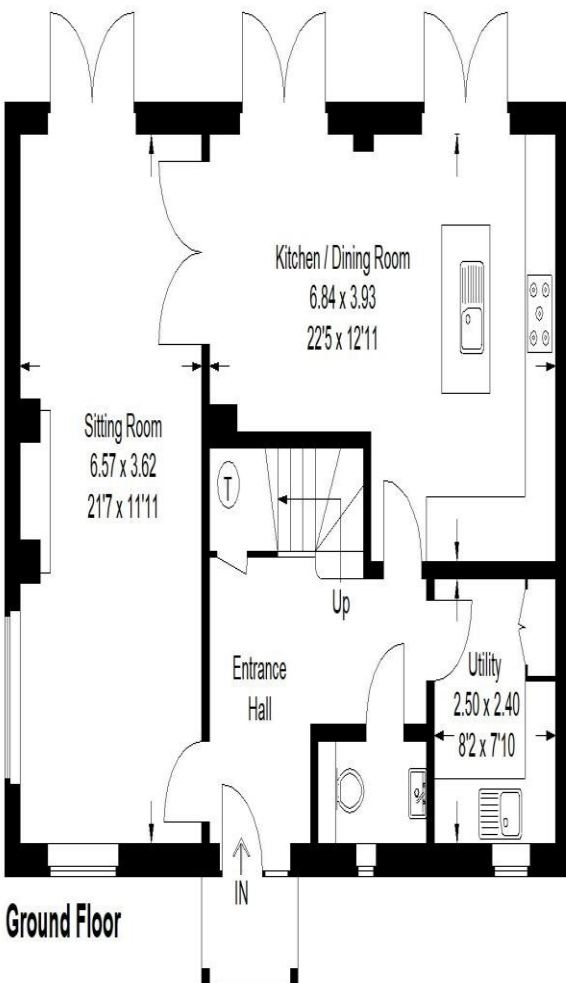


First Floor



Garage Ground Floor

(Not in position)



Ground Floor

This plan is for representation purposes only as defined by the RICS Code of Measuring Practice. Not drawn to scale unless stated. Please check all dimensions before making any decisions reliant upon them. No guarantee is given on square footage if quoted. Any figures if quoted should not be used as a basis for valuation.