

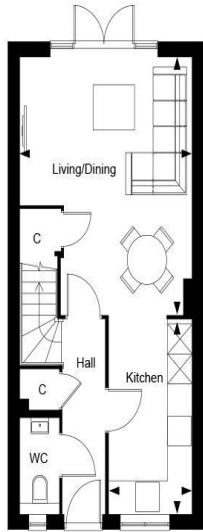


The Baxter - Plot 226
The Maples, Cranleigh, GU6 8WQ
Asking Price: £450,000

ROGER COUPE
LAND & NEW HOMES

*** High specification new home 850 sq ft * Beautiful two-bedroomed terraced home just minutes from Cranleigh High Street * Open plan or enclosed kitchen design available * Contemporary styled kitchen with Bosch appliances * Principal bedroom with fitted wardrobes and en suite * Second double bedroom with en suite * 10 year NHBC Buildmark scheme and 2 year Berkeley warranty * Downstairs cloakroom and utility cupboard * EPC Rating: B ***

LEIGHWOOD
— FIELDS —
CRANLEIGH

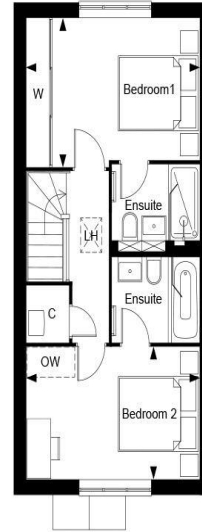


Leighwood Fields, The Maples - The Baxter, Property 226, Ground Floor

Dimensions		
Living/Dining	5.20m x 4.30m	17' 1" x 14' 1"
Kitchen	3.98m x 2.08m	13' 1" x 6' 10"
Total Area	78.96 sq.m	850 sq.ft

Key	
C	Cupboard

LEIGHWOOD
— FIELDS —
CRANLEIGH



Leighwood Fields, The Maples - The Baxter, Property 226, First Floor

Dimensions		
Bedroom 1	4.30m x 2.95m	14' 1" x 9' 8"
Bedroom 2	4.30m x 2.62m	14' 1" x 8' 8"

Key	
C	Cupboard
LH	Loft Hatch
OW	Optional Wardrobe
W	Wardrobe

LEIGHWOOD
— FIELDS —
CRANLEIGH



Leighwood Fields, The Maples - The Baxter, Property 226, Site Map

Berkeley
Designed for life

Berkeley
Designed for life

Berkeley
Designed for life

ROGER COUPE
LAND & NEW HOMES

www.rogercoupe.com
3 Bank Buildings, High Street, Cranleigh, Surrey GU6 8BB
T: 01483 268555 e: housesales@rogercoupe.com