

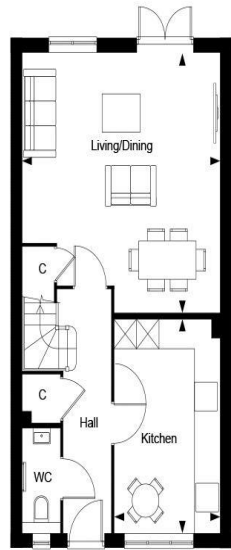


**The Arber - Plot 308**  
**The Maples, Cranleigh, GU6 8WQ**  
**Asking Price: £640,000**

**ROGER COUPE**  
LAND & NEW HOMES

**\* Stunning new home 1108 sq ft \* Beautiful 3 bed roomed end terraced home just minutes from Cranleigh High Street \* Open plan living dining room \* Contemporary style kitchen with stone work surfaces \* Principal bedroom with dressing area and en suite \* Downstairs cloakroom \* 10 year NHBC Buildmark scheme and 2 year Berkeley warranty \* Energy efficient gas fired central heating and hot water system \* EPC Rating: B \***

LEIGHWOOD  
— FIELDS —  
CRANLEIGH

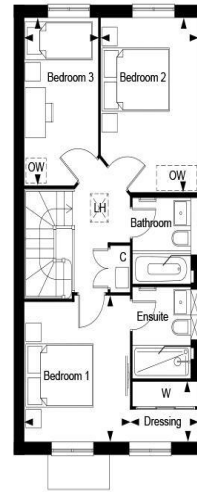


Leighwood Fields, The Maples - The Arber, Property 308, Ground Floor

Dimensions		
Living/Dining	5.43m x 5.13m	17' 10" x 16' 10"
Kitchen	4.45m x 2.75m	14' 7" x 9' 0"
Total Area	102.84 sq.m	1107 sq.ft

Key	
C	Cupboard

LEIGHWOOD  
— FIELDS —  
CRANLEIGH



Leighwood Fields, The Maples - The Arber, Property 308, First Floor

Dimensions		
Bedroom 1	3.45m x 3.12m	11' 4" x 10' 3"
Dressing	2.00m x 1.41m	6' 7" x 4' 8"
Bedroom 2	4.12m x 2.87m	13' 6" x 9' 5"
Bedroom 3	3.96m x 2.16m	13' 0" x 7' 1"

Key	
C	Cupboard
LH	Loft Hatch
OW	Optional Wardrobe
W	Wardrobe

LEIGHWOOD  
— FIELDS —  
CRANLEIGH



Leighwood Fields, The Maples - The Arber, Property 308, Site Map



Berkeley  
Designed for life

Berkeley  
Designed for life

Berkeley  
Designed for life

**ROGER COUPE**  
LAND & NEW HOMES

[www.rogercoupe.com](http://www.rogercoupe.com)  
3 Bank Buildings, High Street, Cranleigh, Surrey GU6 8BB  
**T: 01483 268555** e: [housesales@rogercoupe.com](mailto:housesales@rogercoupe.com)