



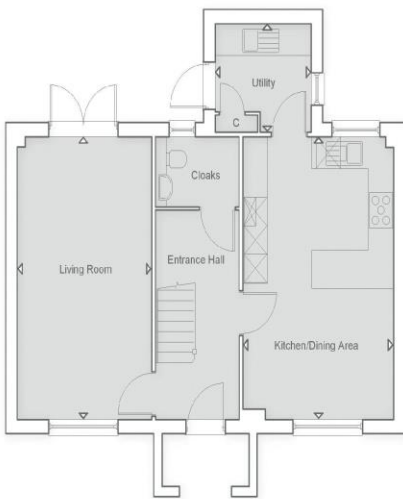
**24 Oxmead Street, Ewhurst
Plot 14 The Penshurst - Firethorn Place**

£949,950 - Freehold

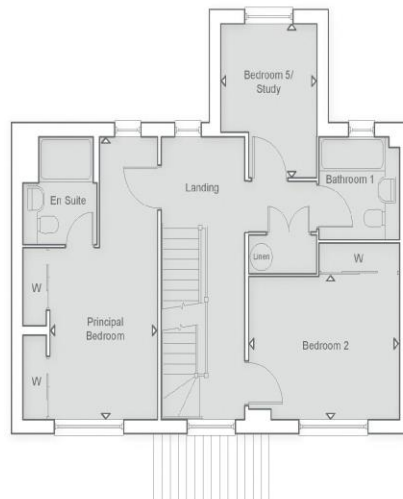


Stunning new home in Surrey village setting * Stamp duty incentive available* T&Cs apply * Ready to move in * 4/5 Bedrooms * 1 Single Bedroom/Study * 3 Bath/Shower Rooms * Open plan Kitchen/Dining Area * Generous Living Room * Double garage with office/studio above

**** Ready to move in **** Situated in this exclusive new development near the heart of the tranquil Surrey Hills village of Ewhurst. This 5 bedroom detached home will exceed expectations both inside and out with plenty of parking including a double garage with home office/studio above. The elegant and characterful design of these homes by Croudace Homes really fit into the rural village setting and the close is positioned favourably with the local shop, infant school and other local amenities within walking distance. Moving inside the property is well planned with a generous dual aspect living room and a lovely high spec open plan kitchen/dining room ideal for modern family life. A useful utility room and cloakroom complete the ground floor. On the first floor there are 3 bedrooms including the principal bedroom with built in wardrobes and a contemporary en-suite shower room, two further bedrooms and a family bathroom. continuing to the top floor there are two more double bedrooms and a further shower room completes the accommodation. Viewing of the show unit is by appointment only so please contact us today to arrange your appointment Please note - internal photos are of a Croudace show home rather than this particular unit and used for indicative marketing purposes.



Ground Floor Plan



First Floor Plan



Second Floor Plan

(Type G5035)
Ewhurst
Plot 14

Important Notice: For clarification, we wish to inform prospective purchasers that these sales particulars have been prepared as a general guide. We have not carried out a detailed survey, nor tested any appliances, equipment, fixtures or services, so cannot verify that they are in working order, or fit for their purpose. Room sizes are approximate: They are taken between internal wall surfaces as indicated on the prepared floor plan.

