

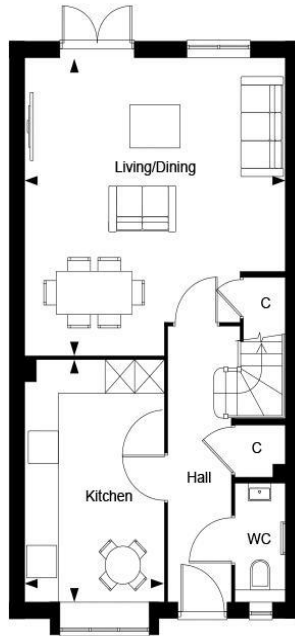


Plot 265 - The Arber
The Maples, Cranleigh, GU6 8WQ
Asking Price: £600,000

ROGER COUPE
LAND & NEW HOMES

*** Stunning new home 1108 sq ft * Beautiful 3 bedroomed end terraced home just minutes from Cranleigh High Street * Open plan living dining room * Contemporary style kitchen with stone work surfaces * Principal bedroom with dressing area and en suite * Downstairs cloakroom * 10 year NHBC Buildmark scheme and 2 year Berkeley warranty * Energy efficient gas fired central heating and hot water system * EPC Rating: B ***

LEIGHWOOD
— FIELDS —
CRANLEIGH



Leighwood Fields, The Maples - The Arber, Property 265, Ground Floor

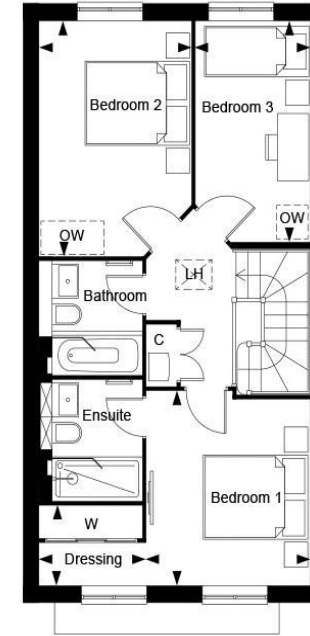
Dimensions

Living/Dining	5.48m x 5.13m	18' 0" x 16' 10"
Kitchen	4.45m x 2.75m	14' 7" x 9' 0"
Total Area	102.84 sq.m	1107 sq.ft

Key

C Cupboard

LEIGHWOOD
— FIELDS —
CRANLEIGH



Leighwood Fields, The Maples - The Arber, Property 265, First Floor

Dimensions

Bedroom 1	3.45m x 3.12m	11' 4" x 10' 3"
Dressing	2.00m x 1.41m	6' 7" x 4' 8"
Bedroom 2	4.17m x 2.87m	13' 8" x 9' 5"
Bedroom 3	3.90m x 2.16m	12' 10" x 7' 1"

Key

C Cupboard
LH Loft Hatch
OW Optional Wardrobe
W Wardrobe

Berkeley
Designed for life

Berkeley
Designed for life