

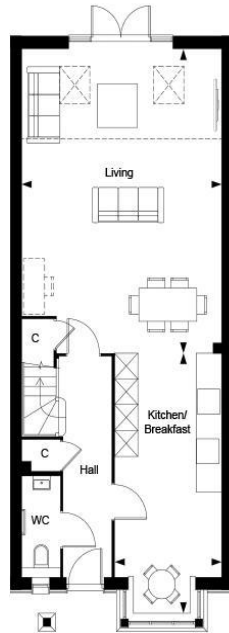


**Plot 274 - The Blackmore**  
**The Maples, Leighwood Fields, Cranleigh, GU6 8WQ**  
**Asking Price: £625,000**

**ROGER COUPE**  
LAND & NEW HOMES

**\* Stunning new home 1283 sq ft \* Beautiful 3 bedroomed terraced home just minutes from Cranleigh High Street \*  
 Open plan living with part vaulted ceiling \* Contemporary style kitchen with stone work surfaces \* Principal  
 bedroom with dressing area and en suite \* Downstairs cloakroom and washing machine cupboard \* 10 year NHBC  
 Warranty \* Energy efficient gas fired central heating and hot water system \* EPC Rating: B \***

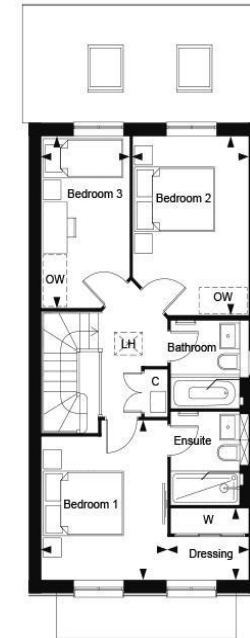
LEIGHWOOD  
 — FIELDS —  
 CRANLEIGH



Leighwood Fields, The Maples - The Blackmore, Property 274, Ground Floor

Dimensions			Key	
Living	7.34m x 5.13m	24' 1" x 16' 10"	C	Cupboard
Kitchen/Breakfast	6.28m x 2.74m	20' 8" x 9' 0"		
Total Area	119.19 sq.m	1283 sq.ft		

LEIGHWOOD  
 — FIELDS —  
 CRANLEIGH



Leighwood Fields, The Maples - The Blackmore, Property 274, First Floor

Dimensions			Key	
Bedroom 1	3.67m x 3.12m	12' 1" x 10' 3"	C	Cupboard
Dressing	2.01m x 1.63m	6' 7" x 5' 4"	LH	Loft Hatch
Bedroom 2	4.17m x 2.87m	13' 8" x 9' 5"	OW	Optional Wardrobe
Bedroom 3	3.96m x 2.16m	13' 0" x 7' 1"	W	Wardrobe

Berkeley  
 Designed for life

Berkeley  
 Designed for life