

SNOXHALL BARN

Cranleigh, Surrey



A PERFECTLY SITUATED NEWLY BUILT BARN CONVERSION, IN A QUIET POSITION WITH STUNNING VIEWS

Summary of accommodation

Ground Floor: Kitchen/dining/living room | Store/utility | Cloakroom
Principal bedroom with en suite | Two further bedrooms | Family bathroom

First Floor: Bedroom with en suite | Bridge over entrance hall leading to study

Distances

Local towns: Cranleigh centre 1.6 miles, Ewhurst 4.2 miles, Shere 7.5 miles

Train stations: Shalford station 8.2 miles (London Waterloo from 43 minutes), Chilworth station 8.5 miles (London Waterloo from 45 minutes)

Guildford mainline station 10.0 miles (from 32 minutes to London Waterloo)

Roads: A3 Burpham 12.9 miles, M25 (Wisley Junction 10) 18.6 miles

Airports: London Gatwick 22.7 miles, London Heathrow 35.5 miles

(All distances and times are approximate)

SITUATION

Cranleigh, renowned as the “largest village in England”, is a quintessentially charming and picturesque village nestled in the heart of Surrey. Positioned just south of Guildford and within convenient reach of London, it offers a seamless blend of tranquil rural living and modern accessibility. The village boasts a thriving community, featuring an array of independent boutiques, cafés, and traditional public houses, all centred around a quintessential village green. Set amidst stunning countryside, Cranleigh offers an abundance of outdoor recreational opportunities, making it an exceptional choice for those seeking a serene lifestyle without compromising on proximity to the capital.

Schools in the area include Cranleigh School in Cranleigh, St Catherine’s School in Cranleigh, Duke of Kent in Ewhurst, Cranmore in West Horsley, Charterhouse in Godalming, St Teresa’s in Effingham as well as The Royal Grammar School and Prep School, Guildford High School, George Abbot, Tormead all in Guildford.

Cranleigh and its picturesque surroundings present an exceptional array of pursuits for those seeking both relaxation and adventure. The charming village green provides the perfect setting for tranquil strolls, while the acclaimed Cranleigh Arts Centre showcases a vibrant calendar of cultural events. Outdoor enthusiasts are spoilt for choice, with scenic walks along the Wey & Arun Canal and the invigorating ascent to Leith Hill’s summit, offering panoramic views across the Surrey Hills. Nearby, Farncombe Boat House caters to water sport enthusiasts with opportunities for canoeing, kayaking, and paddleboarding. Meanwhile, the serene Winkworth Arboretum delights with its meticulously landscaped gardens throughout the seasons. Golfers can also enjoy a round at Cranleigh Golf and Country Club or Bramley Golf Club, making Cranleigh a destination that effortlessly marries outdoor pursuits with cultural sophistication.



THE PROPERTY

- 10 year guarantee in place
- Modern and high quality finishes throughout
- Principal bedroom with en suite of the ground floor
- Two further bedrooms
- Family bathroom
- Potential fourth bedroom with an existing bathroom on the first floor
- Study looking down into the living area, with glass balustrades
- Stunning views
- Quiet position
- Large patio and rear garden
- Electric car charging point





PROPERTY INFORMATION

Services: We are advised by our clients that the property has mains water, electricity, central heating and private drainage.

Local Authority: Waverley Borough Council: 01483 523333

Council Tax: Band D

EPC Rating: B

Tenure: Freehold

Directions

Postcode: GU6 8JW

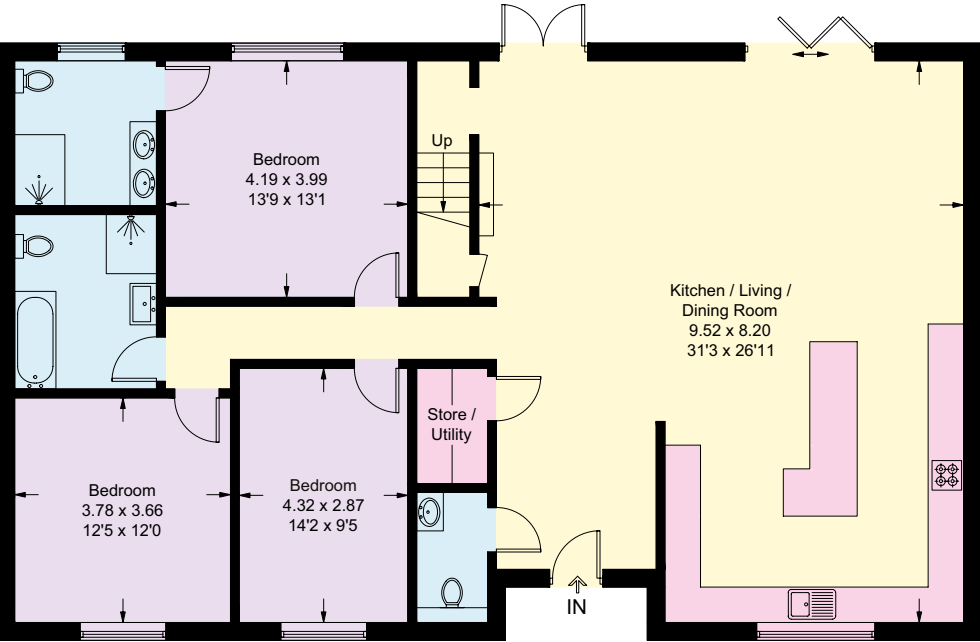
What3words: ///squaring.mysteries.quicker

Viewings: Viewing is strictly by appointment through Knight Frank.



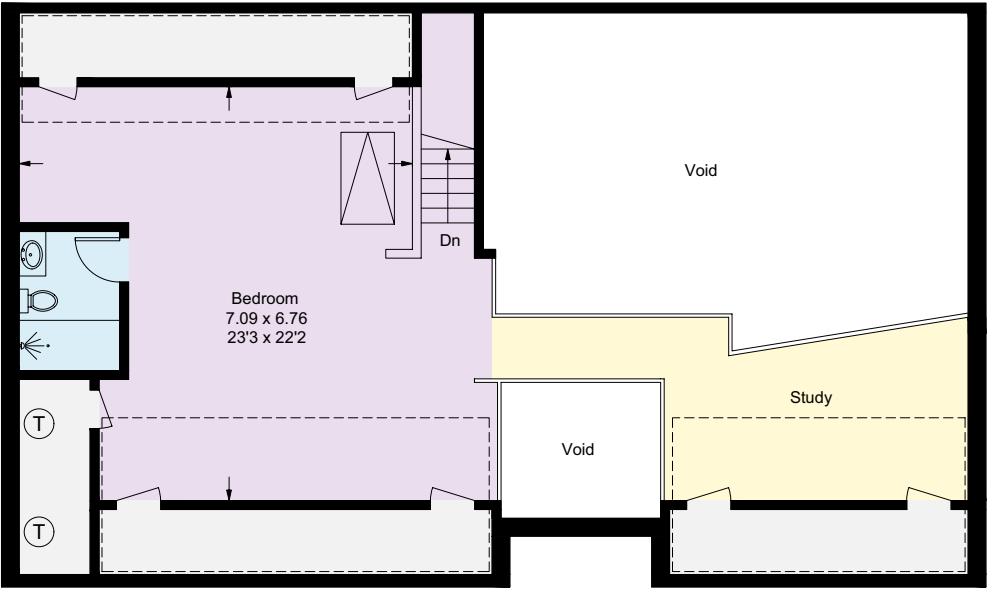
- Reception
- Bedroom
- Bathroom
- Kitchen/Utility
- Storage
- Outside

[Dashed Box] = Reduced headroom below 1.5m / 5'0



Ground Floor

Approximate Gross Internal Area = 248.7 sq m / 2677 sq ft
(Excluding Void)



First Floor

This plan is for layout guidance only. Not drawn to scale unless stated. Windows and door openings are approximate. Whilst every care is taken in the preparation of this plan, please check all dimensions, shapes and compass bearings before making any decisions reliant upon them.



I would be delighted
to tell you more.

Morten Boardman

01483 617930

morten.boardman@knightfrank.com

Knight Frank Guildford

2-3 Eastgate Court, High Street

Guildford GU1 3DE

knightfrank.co.uk

Your partners in property

1. Particulars: These particulars are not an offer or contract, nor part of one. You should not rely on statements given by Knight Frank in the particulars, by word of mouth or in writing ("information") as being factually accurate about the property, its condition or its value. Neither Knight Frank nor any joint agent has any authority to make any representations about the property, and accordingly any information given is entirely without responsibility on the part of Knight Frank. 2. Material Information: Please note that the material information is provided to Knight Frank by third parties and is provided here as a guide only. While Knight Frank has taken steps to verify this information, we advise you to confirm the details of any such material information prior to any offer being submitted. If we are informed of changes to this information by the seller or another third party, we will use reasonable endeavours to update this as soon as practical. 3. Photos, Videos etc: The photographs, property videos and virtual viewings etc. show only certain parts of the property as they appeared at the time they were taken. Areas, measurements and distances given are approximate only. 4. Regulations etc: Any reference to alterations to, or use of, any part of the property does not mean that any necessary planning, building regulations or other consent has been obtained. A buyer must find out by inspection or in other ways that these matters have been properly dealt with and that all information is correct. 5. Fixtures and fittings: A list of the fitted carpets, curtains, light fittings and other items fixed to the property which are included in the sale (or may be available by separate negotiation) will be provided by the Seller's Solicitors. 6. VAT: The VAT position relating to the property may change without notice. 7. To find out how we process Personal Data, please refer to our Group Privacy Statement and other notices at <https://www.knightfrank.com/legals/privacy-statement>.

Particulars dated July 2025. Photographs and videos dated June 2025. All information is correct at the time of going to print. Knight Frank is the trading name of Knight Frank LLP. Knight Frank LLP is a limited liability partnership registered in England and Wales with registered number OC305934. Our registered office is at 55 Baker Street, London W1U 8AN. We use the term 'partner' to refer to a member of Knight Frank LLP, or an employee or consultant. A list of members names of Knight Frank LLP may be inspected at our registered office. If you do not want us to contact you further about our services then please contact us by either calling 020 3544 0692, email to marketing.help@knightfrank.com or post to our UK Residential Marketing Manager at our registered office (above) providing your name and address. Brochure by wordperfectprint.com