

Pewley Bank

Guildford, Surrey

FIVE

CAMELOT





A five bedroom detached residence with breathtaking views over Guildford and just 0.4 miles from the High Street

Guildford High Street 0.4 miles, London Road Station, Guildford 0.6 miles (from 47 minutes to London Waterloo)
Guildford station 0.9 miles (from 34 minutes to London Waterloo), A3 (Guildford northbound) 1.5 miles, A3 (Guildford southbound) 2.1 miles
M25 (Junction 10) 8.8 miles, Heathrow Airport 22.6 miles, Gatwick Airport 27.4 miles, Central London 31.4 miles
(All distances and times are approximate)


5


2


2

Summary of accommodation

Ground Floor: Kitchen | Drawing room | Dining room | Garage | Utility room


First Floor: Principal bedroom with en suite | Bedroom with shower and sink | Three further bedrooms | Washroom

Gardens and Grounds: Fabulous tiered garden

Situation

Surrounded on three sides by the Surrey Hills Area of Outstanding Natural Beauty, Guildford is a popular choice for enjoying both town and country living and within 30 miles of central London.

Guildford provides extensive shopping, restaurants, bars, entertainment and sporting facilities, with historic buildings providing backdrops at every turn. In the centre is the medieval Guildford Castle with landscaped gardens and views from its square tower. The town hosts both a bustling Friday and Saturday market as well as a farmer's market on the first Tuesday of each month.

 **Schools:** Royal Grammar School and Royal Grammar Preparatory School, Guildford High School, Tormead, George Abbot School, St Peter's Catholic School, St Thomas of Canterbury Catholic School, Guildford County School, Pewley Down Infant School, Holy Trinity Junior School, Boxgrove Primary School, St Catherine's, Charterhouse, Aldro.

 **Amenities:** G Live, Yvonne Arnaud Theatre, Pit Farm Tennis Club, Merrow Tennis Club, Surrey Sports Park, Spectrum Leisure Centre, Bramley Golf Club, West Surrey Golf Club, Guildford Golf Club, Worplesdon Golf Club.

Pewley Bank

No. 5 Pewley Bank is a beautifully appointed and generously proportioned detached residence, offering exceptional family accommodation across two thoughtfully designed floors. Upon entering the property, a spacious hallway provides access to the principal reception areas, including a formal dining room that is perfect for hosting guests or family gatherings. The sitting room is a particularly impressive space, featuring large windows that allow natural light to pour in, creating a warm and inviting atmosphere. To the rear of the house, the expansive kitchen is fitted with high-quality units and integrated appliances, offering ample space for both everyday living and entertaining. A separate utility room provides additional functionality, discreetly housing laundry facilities and storage.





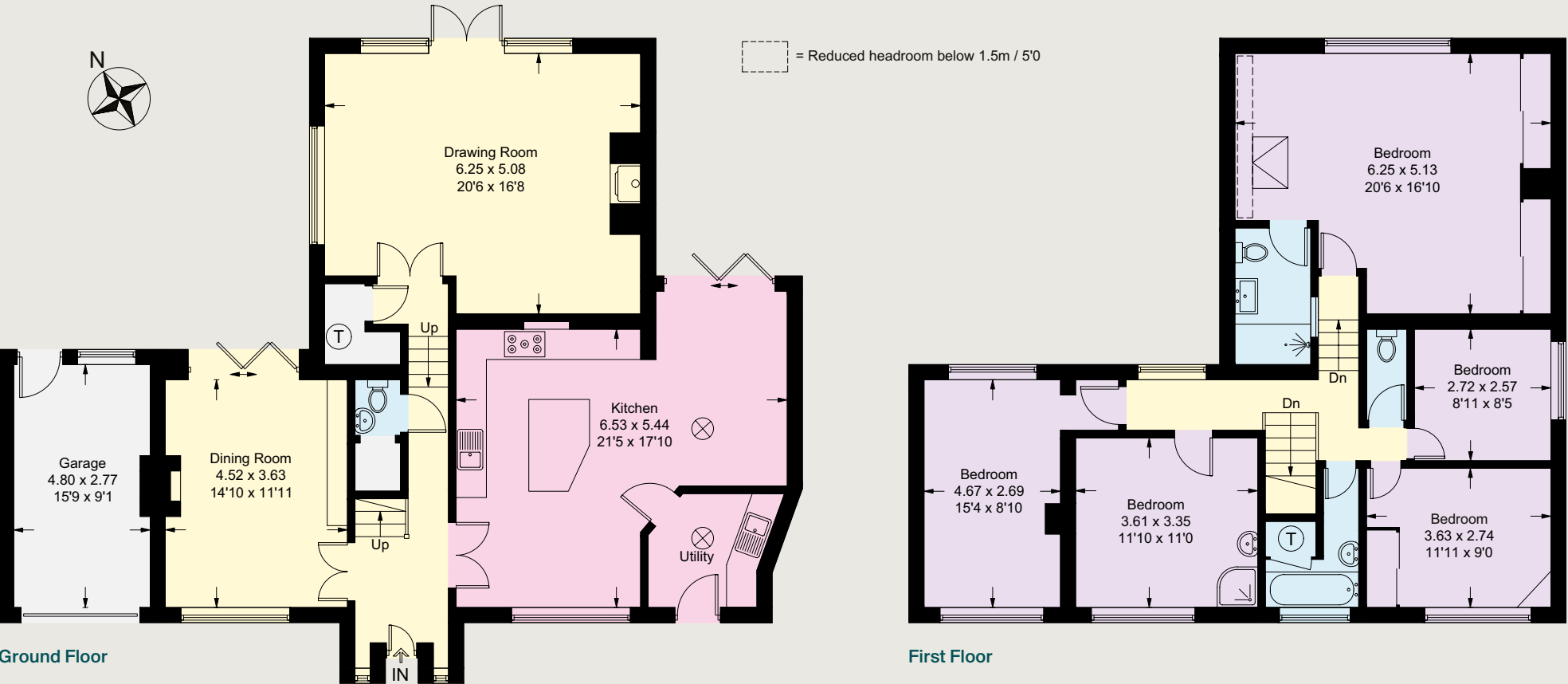
Upstairs, the first floor is arranged around a central landing, leading to five well-proportioned bedrooms. The principal bedroom enjoys a private and peaceful aspect along with a spacious en suite bathroom, designed to a high standard.

One of the additional bedrooms features its own shower, offering flexibility for guests or older children seeking greater independence. The remaining three bedrooms are all generous in size and served by a contemporary family washroom.

This exceptional property combines elegant and flexible living spaces with practical modern amenities, making it an ideal long-term home for a growing family, all within easy reach of Guildford's excellent schools, transport links, and countryside walks.



Approximate Gross Internal Floor Area
198.6 sq m / 2138 sq ft
Garage = 13.1 sq m / 141 sq ft
Total = 211.7 sq m / 2279 sq ft



This plan is for guidance only and must not be relied upon as a statement of fact. Attention is drawn to the Important Notice on the last page of the text of the Particulars.

Garden and Grounds

This stunning tiered garden offers beautifully landscaped levels designed to maximise both beauty and function, each tier provides a unique vantage point with breathtaking views of Guildford—perfect for entertaining or peaceful relaxation. A true outdoor sanctuary that enhances the charm and value of the property.

Property Information

Services

We are advised by our clients that the property has mains water, electricity, drainage, oil-fired / gas central heating and private drainage.

Tenure

Freehold

Local Authority

Guildford Borough Council

Council Tax

Band G

EPC Rating

D

Directions

Postcode: GU1 3PU

What3words: ///wash.scans.offer

Viewings

Viewing is strictly by appointment through Knight Frank.





Knight Frank Guildford
2-3 Eastgate Court
High Street, Guildford
GU1 3DE

James Ackerley
01483 617920
james.ackerley@knightfrank.com

Tim Chapman
01483 963880
tim.chapman@knightfrank.com

knightfrank.co.uk

Important Notice: 1. Particulars: These particulars are not an offer or contract, nor part of one. You should not rely on statements given by Knight Frank in the particulars, by word of mouth or in writing ("information") as being factually accurate about the property, its condition or its value. Neither Knight Frank nor any joint agent has any authority to make any representations about the property, and accordingly any information given is entirely without responsibility on the part of Knight Frank. 2. Material Information: Please note that the material information is provided to Knight Frank by third parties and is provided here as a guide only. While Knight Frank has taken steps to verify this information, we advise you to confirm the details of any such material information prior to any offer being submitted. If we are informed of changes to this information by the seller or another third party, we will use reasonable endeavours to update this as soon as practical. 3. Photos, Videos etc: The photographs, property videos and virtual viewings etc. show only certain parts of the property as they appeared at the time they were taken. Areas, measurements and distances given are approximate only. 4. Regulations etc: Any reference to alterations to, or use of, any part of the property does not mean that any necessary planning, building regulations or other consent has been obtained. A buyer must find out by inspection or in other ways that these matters have been properly dealt with and that all information is correct. 5. Fixtures and fittings: A list of the fitted carpets, curtains, light fittings and other items fixed to the property which are included in the sale (or may be available by separate negotiation) will be provided by the Seller's Solicitors. 6. VAT: The VAT position relating to the property may change without notice. 7. To find out how we process Personal Data, please refer to our Group Privacy Statement and other notices at <https://www.knightfrank.com/legals/privacy-statement>.

Particulars dated May 2025. Photographs and videos dated May 2025. All information is correct at the time of going to print. Knight Frank is the trading name of Knight Frank LLP. Knight Frank LLP is a limited liability partnership registered in England and Wales with registered number OC305934. Our registered office is at 55 Baker Street, London W1U 8AN. We use the term 'partner' to refer to a member of Knight Frank LLP, or an employee or consultant. A list of members names of Knight Frank LLP may be inspected at our registered office. If you do not want us to contact you further about our services then please contact us by either calling 020 3544 0692, email to marketing.help@knightfrank.com or post to our UK Residential Marketing Manager at our registered office (above) providing your name and address. Brochure by wordperfectprint.com