

# Breezes

Primrose Way, Bramley, Guildford, Surrey







# A substantial and stylish family house in a peaceful setting on the edge of the village

Bramley 1.0 mile, Guildford 4.2 miles, Central London 35.9 miles, Guildford Station 3.3 miles (from 37 minutes to London Waterloo)  
Godalming station 1.9 miles (from 43 minutes to London Waterloo).  
(All distances and times are approximate)

---

		
4	3	4

---

## Summary of accommodation

- Reception hall | Dining room | Kitchen/breakfast room with adjoining sitting room | Music room | Utility room | Cloakroom | Plant room | Cellar
- Principal bedroom with en suite shower room and dressing room | First floor guest bedroom with en suite shower room  
Two further bedrooms | Family bathroom
- Outbuildings | Double garage
- Beautiful south-facing gardens with many fine mature trees | Tennis court | Extensive parking
- In all about 1.31 acres



# Situation

Breezes is set in a wonderful Surrey Hills setting on the western edge of Bramley which offers a good range of shops for everyday needs. More extensive facilities are available in nearby Guildford and Godalming which are both a short drive away and offer a wide range of extensive shopping, educational and recreational facilities including the Yvonne Arnaud Theatre and the Spectrum Leisure Centre.

The A3 at Guildford provides access to London with connections to the national motorway network, Heathrow and Gatwick airports.

Breezes is situated in an Area of Outstanding Natural Beauty; the surrounding countryside is some of the finest in the county and includes the beautiful Thorncombe Valley which is nearby.

For those who commute, Godalming station is 1.9 miles, and Guildford station is 3.3 miles from the property, providing regular services to London and other major destinations.

# Breezes

Breezes is a beautifully modernised detached house positioned on Primrose Way, which is a peaceful close between Munstead and Bramley.

It offers a harmonious blend of elegant light interiors and predominantly lateral living, perfect for those seeking both comfort and style with picture windows benefitting from glorious views over the well-stocked gardens.





This property comprises four bedrooms, including a principal bedroom suite on the ground floor complete with a dressing room and bathroom. Each room is thoughtfully designed to maximise natural light, creating a welcoming and airy atmosphere throughout. The expansive living spaces include a well-equipped kitchen and dining area, ideal for family gatherings and entertaining with adjacent sitting room.





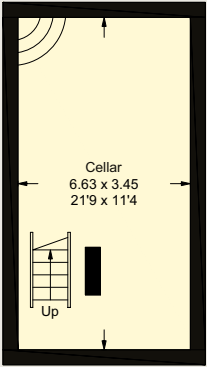






Approximate Gross Internal Floor Area  
311.9 sq m / 3357 sq ft  
Garage / Outbuildings = 56.9 sq m / 612 sq ft  
Total = 368.8 sq m / 3969 sq ft

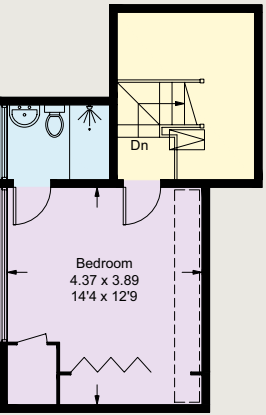
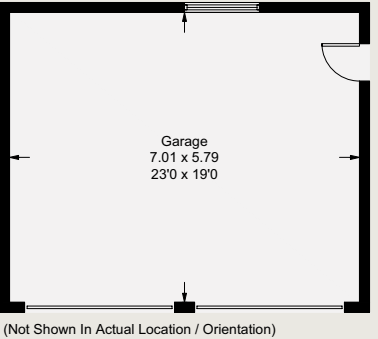
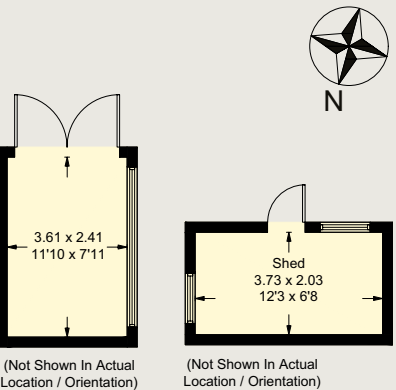
[Dashed box symbol] = Reduced headroom below 1.5m / 5'0



Lower Ground Floor



- Reception
- Bedroom
- Bathroom
- Kitchen/Utility
- Storage
- Outside



First Floor

This plan is for guidance only and must not be relied upon as a statement of fact. Attention is drawn to the Important Notice on the last page of the text of the Particulars.



Step outside to the landscaped gardens with a generous south facing terrace and an attractive pond surrounded by vibrant flora perfect for wildlife. The garden also features a hard tennis court and expansive lawns. Impeccable landscaping and towering trees frame this outdoor space, making it an idyllic haven for relaxation and recreation.

Practical details include ample parking, substantial garaging and storage solutions, ensuring convenience for the homeowner.

This home is a true gem, offering peaceful country living without compromising on modern amenities and elegance.





# Property Information

Tenure

Freehold

Local Authority

Waverley Borough Council

Council Tax

Band G

EPC Rating

B

Directions

Postcode: GU5 0BZ

What3words: ///shakes.farm.spends

Viewings

Viewing is strictly by appointment  
through Knight Frank.







**Knight Frank Guildford**  
2-3 Eastgate Court  
High Street, Guildford  
GU1 3DE

**Tim Harriss**  
01483 617910  
tim.harriss@knightfrank.com

**knightfrank.co.uk**

Important Notice: 1. Particulars: These particulars are not an offer or contract, nor part of one. You should not rely on statements given by Knight Frank in the particulars, by word of mouth or in writing ("information") as being factually accurate about the property, its condition or its value. Neither Knight Frank nor any joint agent has any authority to make any representations about the property, and accordingly any information given is entirely without responsibility on the part of Knight Frank. 2. Material Information: Please note that the material information is provided to Knight Frank by third parties and is provided here as a guide only. While Knight Frank has taken steps to verify this information, we advise you to confirm the details of any such material information prior to any offer being submitted. If we are informed of changes to this information by the seller or another third party, we will use reasonable endeavours to update this as soon as practical. 3. Photos, Videos etc: The photographs, property videos and virtual viewings etc. show only certain parts of the property as they appeared at the time they were taken. Areas, measurements and distances given are approximate only. 4. Regulations etc: Any reference to alterations to, or use of, any part of the property does not mean that any necessary planning, building regulations or other consent has been obtained. A buyer must find out by inspection or in other ways that these matters have been properly dealt with and that all information is correct. 5. Fixtures and fittings: A list of the fitted carpets, curtains, light fittings and other items fixed to the property which are included in the sale (or may be available by separate negotiation) will be provided by the Seller's Solicitors. 6. VAT: The VAT position relating to the property may change without notice. 7. To find out how we process Personal Data, please refer to our Group Privacy Statement and other notices at <https://www.knightfrank.com/legals/privacy-statement>.

Particulars dated May 2025. Photographs and videos dated April 2025. All information is correct at the time of going to print. Knight Frank is the trading name of Knight Frank LLP. Knight Frank LLP is a limited liability partnership registered in England and Wales with registered number OC305934. Our registered office is at 55 Baker Street, London W1U 8AN. We use the term 'partner' to refer to a member of Knight Frank LLP, or an employee or consultant. A list of members names of Knight Frank LLP may be inspected at our registered office. If you do not want us to contact you further about our services then please contact us by either calling 020 3544 0692, email to [marketing.help@knightfrank.com](mailto:marketing.help@knightfrank.com) or post to our UK Residential Marketing Manager at our registered office (above) providing your name and address. Brochure by [wordperfectprint.com](http://wordperfectprint.com)