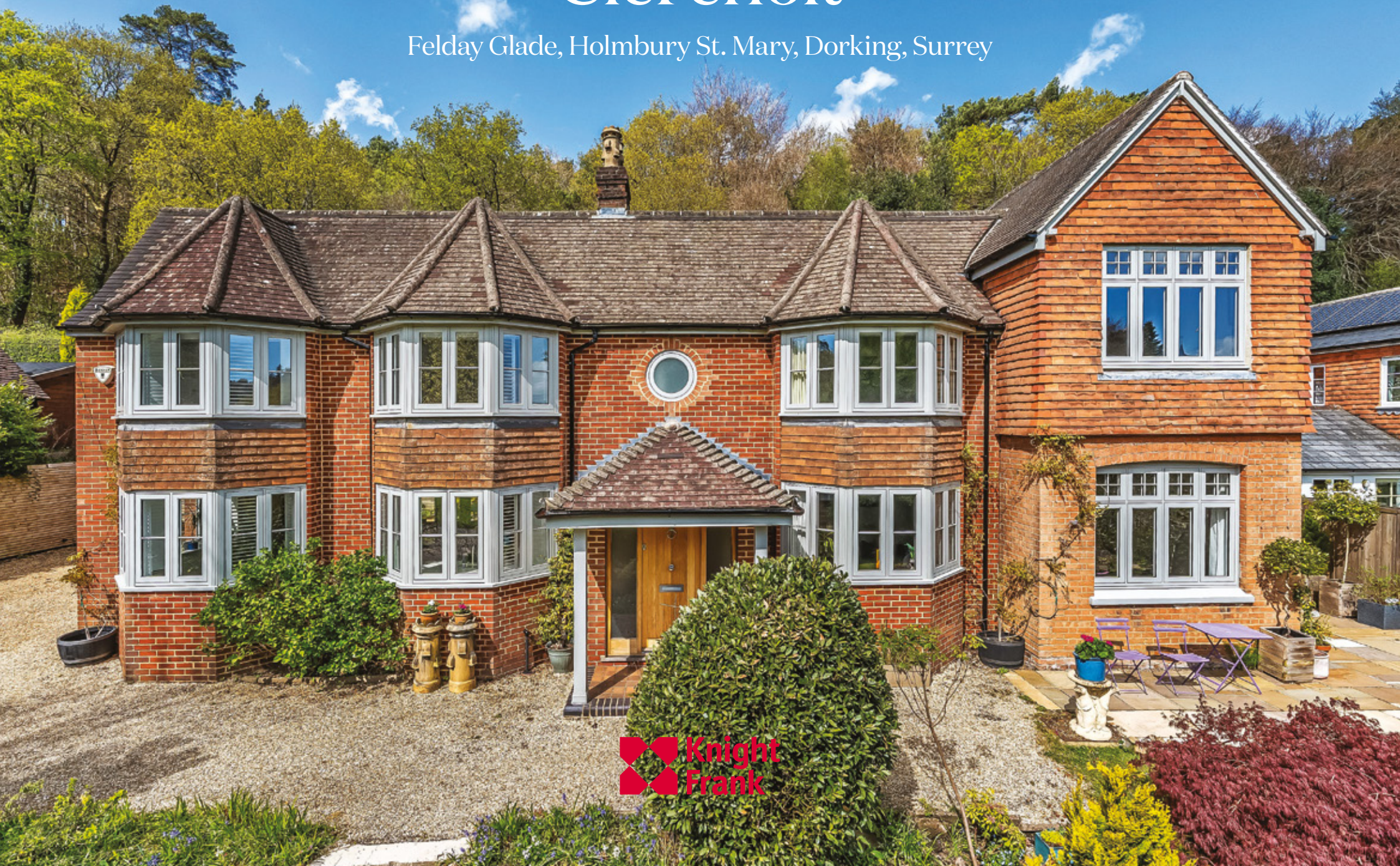


# Clereholt

Felday Glade, Holmbury St. Mary, Dorking, Surrey











# A beautifully refurbished home in the much requested village, Holmbury St. Mary.

**Local towns:** Abinger Hammer 2.4 miles, Peaslake 3.8 miles, Cranleigh, 6.4 miles, Dorking 7 miles

**Train stations:** Gomshall station 3.2 miles (London Waterloo from 51 minutes), Dorking station 7 miles (London Victoria from 56 minutes)

Guildford mainline station 10.4 miles (London Waterloo from 33 minutes)

**Roads:** A3 West Clandon 9.6 miles, M25 (Leatherhead Junction 9) 12.6 miles

**Airports:** London Heathrow 28.8 miles, London Gatwick 16.7 miles

(All distances and times are approximate)



6



4



5

---

## Summary of accommodation

**Ground Floor:** Entrance hall | Kitchen/dining room | Study/downstairs bedroom | Drawing room  
Annexe kitchen/breakfast room | Family room | Two cloakrooms | Boiler room/storage

**First Floor:** Principal bedroom with en suite | Guest bedroom with en suite | Four further bedrooms  
Two family bathrooms | Cloakroom | Separate sink

## Situation

Clereholt enjoys a prime position on the outskirts of the sought-after village of Holmbury St Mary, nestled in the heart of the Surrey Hills – a designated Area of Outstanding Natural Beauty. Surrounded by rolling countryside, far-reaching views, and postcard-perfect villages, this idyllic setting offers the very best of country living within easy reach of London. The village itself is home to a thriving community and boasts two welcoming public houses, a picturesque green, a charming parish church, a well-regarded cricket club, and the esteemed Hurtwood House School.

The surrounding villages of Shere, Abinger Hammer, and Peaslake are all within easy reach, each offering a vibrant community atmosphere and a wealth of local amenities. These charming villages are home to welcoming public houses, restaurants, local shops, and essential services, including a surgery. Notably, the Kingfisher Farm Shop in Abinger Hammer and the Peaslake Village Store are standout highlights for those who enjoy fine local produce.

Holmbury Hill, with its Iron Age fort and an expansive network of over 60 miles of scenic paths and tracks, provides ample opportunities for outdoor pursuits including walking, riding, and cycling. For those seeking broader facilities, Guildford to the west, Dorking to the east, and

Cranleigh to the south offer superb educational, recreational, and shopping amenities, ensuring that every need is met with ease.

There is an excellent range of schools including Duke of Kent, Cranmore, St Teresa's, Longacre, St Catherine's, and Cranleigh School. In addition, Guildford, Dorking, and Cranleigh offer a variety of highly regarded schools. For younger children, there are also a number of easily accessible primary schools in nearby villages such as Peaslake, Abinger Common, and Shere.

Holmbury St Mary and its surrounding areas offer a wealth of outdoor pursuits and local conveniences. The Holmbury Hill Circular Walk provides spectacular views, while Hurtwood Forest boasts miles of trails for walking, cycling, and horse riding. Leith Hill, the highest point in southeast England, offers breathtaking panoramas. The village is home to The Royal Oak pub and the Peaslake Village Store, while the nearby Kingfisher Farm Shop in Abinger Hammer offers fresh, locally sourced produce. The picturesque village of Shere is just a short drive away, offering a selection of independent shops and cafes, while both Cranleigh and Dorking provide an array of shops, restaurants, and amenities. For those seeking further outdoor exploration, Box Hill, a renowned National Trust site, is within easy reach.



## Clereholt

Clereholt is a charming character property dating back to around 1900, with later additions and recent, meticulous refurbishment throughout. Our clients have cleverly designed the property so that it can comfortably be used as a single home or with a two-bedroom integral annexe, perfect for multi-generational living.

The triple-aspect family kitchen/dining area enjoys an abundance of natural light and finished to a high standard, featuring a granite-topped island with an integrated breakfast bar, bespoke cabinetry, and flagstone flooring.







## LIVING SPACES

The spacious drawing room, accessed from the kitchen, offers high ceilings, a bay window, and hardwood flooring, making it ideal for relaxation and entertaining.

A second reception room, currently a study, could easily serve as a playroom or extra bedroom.









## THE SELF CONTAINED INTEGRAL ANNEXE









## BEDROOMS & BATHROOMS



Upstairs, the principal bedroom includes built-in cupboards and a spacious en suite with double sinks and views onto the garden. There are a further three double bedrooms (one en suite) which share a family bathroom room and a laundry room.

Within the annexe part of the home, there is a large family room with a second kitchen/breakfast room, with a wood-burning stove, hardwood floors, a second cloakroom, and a pantry. On the first floor there are two generous double bedrooms, a bathroom. This area can be easily integrated with the main house if desired.









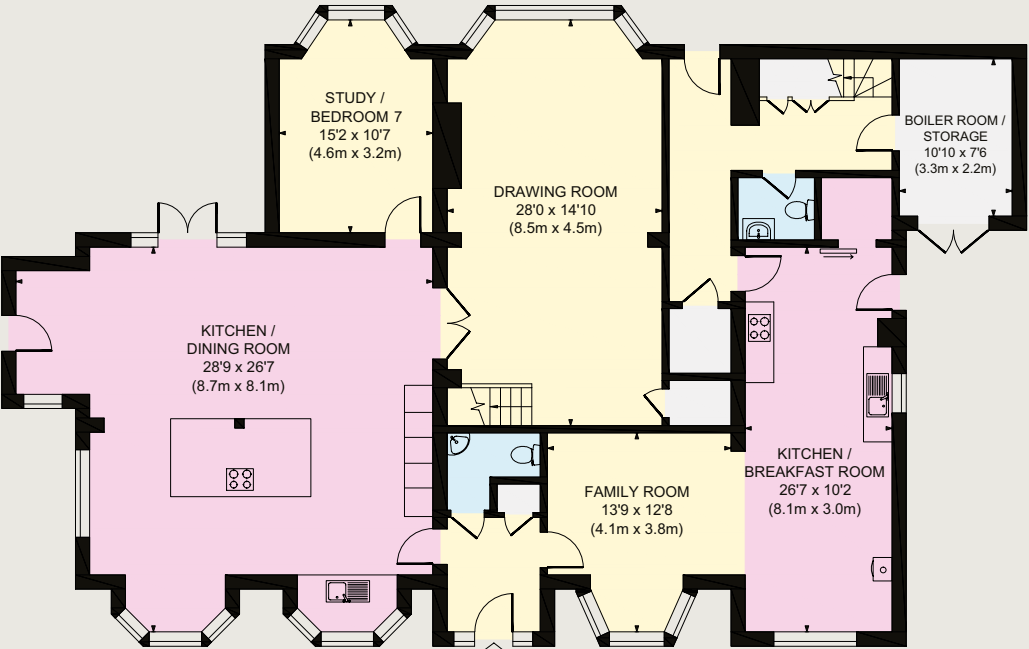
## BEDROOMS & BATHROOMS



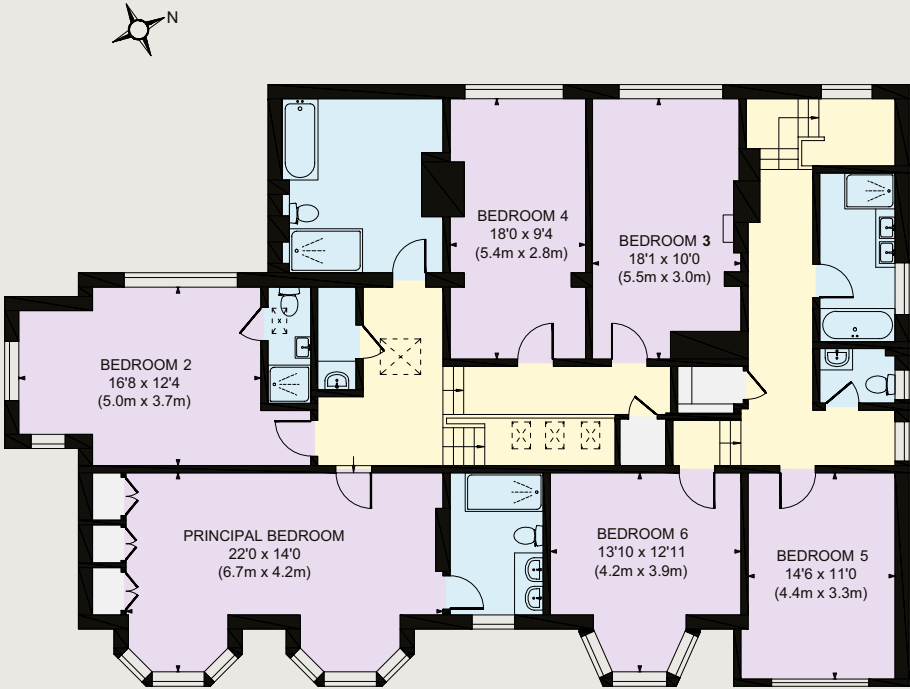


Approximate Gross Internal Floor Area  
4100 sq. ft / 380.90 sq. m

- Reception
- Bedroom
- Bathroom
- Kitchen/Utility
- Storage
- Outside



Ground Floor



First Floor

This plan is for guidance only and must not be relied upon as a statement of fact. Attention is drawn to the Important Notice on the last page of the text of the Particulars.



## Garden and Grounds

Outside, the delightful gardens are well kept with steps leading to a large level lawn at the front, a separate raised terrace and direct access to The Hurtwood with over 2000 acres of privately owned Surrey common land. Ample parking is offered for multiple vehicles on the gravel driveway.

## Property Information

### Services

We are advised by our clients that the property has mains water and electricity. Private drainage.

### Tenure

Freehold

### Local Authority

Guildford Borough Council – 01483 505050

### Council Tax

Band H

### EPC Rating

D

### Directions

Postcode: RH5 6PG

What3words: ///wished.tall.pots

### Viewings

Viewing is strictly by appointment through Knight Frank.











**Knight Frank Guildford**

2-3 Eastgate Court

High Street, Guildford

GU1 3DE

**Morten Boardman**

01483 617930

[morten.boardman@knightfrank.com](mailto:morten.boardman@knightfrank.com)

[knightfrank.co.uk](https://www.knightfrank.co.uk)

Important Notice: 1. Particulars: These particulars are not an offer or contract, nor part of one. You should not rely on statements given by Knight Frank in the particulars, by word of mouth or in writing ("information") as being factually accurate about the property, its condition or its value. Neither Knight Frank nor any joint agent has any authority to make any representations about the property, and accordingly any information given is entirely without responsibility on the part of Knight Frank. 2. Material Information: Please note that the material information is provided to Knight Frank by third parties and is provided here as a guide only. While Knight Frank has taken steps to verify this information, we advise you to confirm the details of any such material information prior to any offer being submitted. If we are informed of changes to this information by the seller or another third party, we will use reasonable endeavours to update this as soon as practical. 3. Photos, Videos etc: The photographs, property videos and virtual viewings etc. show only certain parts of the property as they appeared at the time they were taken. Areas, measurements and distances given are approximate only. 4. Regulations etc: Any reference to alterations to, or use of, any part of the property does not mean that any necessary planning, building regulations or other consent has been obtained. A buyer must find out by inspection or in other ways that these matters have been properly dealt with and that all information is correct. 5. Fixtures and fittings: A list of the fitted carpets, curtains, light fittings and other items fixed to the property which are included in the sale (or may be available by separate negotiation) will be provided by the Seller's Solicitors. 6. VAT: The VAT position relating to the property may change without notice. 7. To find out how we process Personal Data, please refer to our Group Privacy Statement and other notices at <https://www.knightfrank.com/legals/privacy-statement>.

Particulars dated April 2025. Photographs and videos dated April 2025. All information is correct at the time of going to print. Knight Frank is the trading name of Knight Frank LLP. Knight Frank LLP is a limited liability partnership registered in England and Wales with registered number OC305934. Our registered office is at 55 Baker Street, London W1U 8AN. We use the term 'partner' to refer to a member of Knight Frank LLP, or an employee or consultant. A list of members names of Knight Frank LLP may be inspected at our registered office. If you do not want us to contact you further about our services then please contact us by either calling 020 3544 0692, email to [marketing.help@knightfrank.com](mailto:marketing.help@knightfrank.com) or post to our UK Residential Marketing Manager at our registered office (above) providing your name and address. Brochure by [wordperfectprint.com](https://www.wordperfectprint.com)