



Flexford Farmhouse, Wanborough, Guildford, Surrey



A very comfortable double fronted Victorian farmhouse in an **enviable rural setting** yet close to superb amenities.

Summary of accommodation

Hall | Drawing room | Sitting room | Dining room | Study | Family room | Kitchen | Utility room | Laundry room | Store room | Boot room
Shower room | Integral double garage | Cellar

Principal bedroom with dressing room and shower room | Two further double bedrooms | Family bathroom

Approximate GIA: 3372 square feet (including internal garage)

In all about 0.6 acres (further land available)

Distances

Wanborough Station 4.3 miles (via the A31) or 1.5 miles (on unmade road), A31 (Hogs Back) 0.4 miles

A3 0.9 miles, Guildford Station 3.1 miles (London Waterloo from 35 minutes), Farnham 9.3 miles

(All distances and times are approximate)



Knight Frank Guildford
2-3 Eastgate Court, High Street
Guildford
GU13DE
knightfrank.co.uk

Tim Harriss
01483 617910
tim.harriss@knightfrank.com



Situation

Flexford Farmhouse is situated in a secluded and truly rural setting surrounded by open arable farmland. Close by is Wanborough which can only be described as an archetypal English country hamlet with a church dating back to the 13th Century, 16th Century manor house and very large Great Barn, surrounded by farmland and yet incredibly accessible to Guildford.

The county town of Guildford is within about 6 miles to the east, offering extensive shopping, recreational and educational facilities as well as a main line station to London Waterloo, taking approximately 35 minutes. Communications are excellent in the area with the A31 (Hogs Back) being close by providing access to the A3 which in turn links up with the M25, and subsequently London, Heathrow, Gatwick and Southampton airports.

The surrounding countryside has many miles of footpaths and bridleways ideal for the walking, riding and cycling enthusiast.





The property

Flexford Farmhouse is a most attractive double fronted Victorian farmhouse which has been owned by our clients since September 1992. Sitting in a commanding position with views across its own land and well managed farmland, the house has been lovingly maintained and offers some really good rooms with high ceilings and beautiful sash windows.

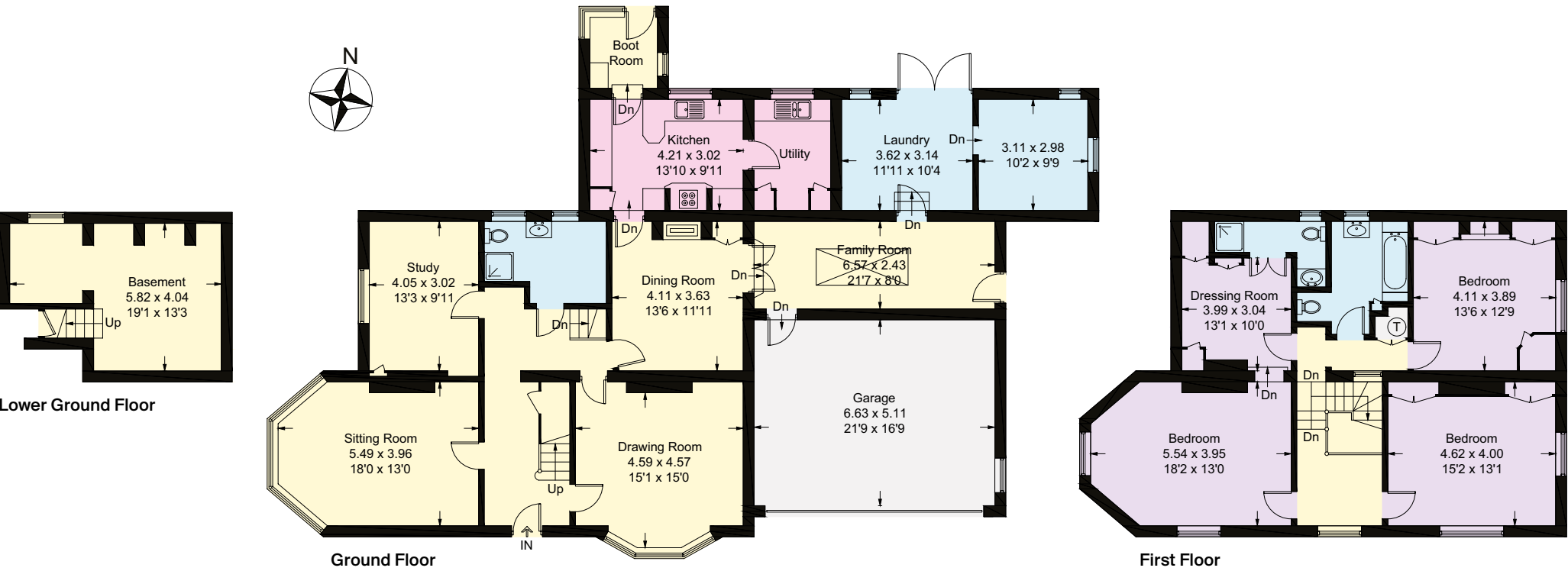
The accommodation is laid out over two storeys and has been substantially extended on the ground floor. Upstairs are three double bedrooms including an excellent principal suite with dressing room and shower room.



Approximate Gross Internal Floor Area
313.3 sq m / 3372 sq ft
(Including Garage)

This plan is for guidance only and must not be relied upon as a statement of fact. Attention is drawn to the Important Notice on the last page of the text of the Particulars.

- Reception
- Bedroom
- Bathroom
- Kitchen/Utility
- Storage
- Outside



Outside

Flexford Farmhouse is approached from East Flexford Lane through electric wrought iron gates into a driveway with plenty of parking. The formal gardens surround the house and have some fine specimen trees.

Services

The vendors advise that the property has oil fired heating, private drainage, mains water and electricity.

Directions (GU3 2JP)

what3words: ///timed.pressing.guarding

From London, take the A3 southbound to Guildford, bypassing the town and fork left onto the A31 (Hogs Back, signposted Farnham). Proceed along the Hogs Back for about 2 miles and take the left hand turning signposted to Puttenham, Wanborough and Compton. At the T-junction, turn right and rejoin the A31 heading towards Guildford. After 1.2 miles, stay in the left-hand lane and take the sharp left hand turn into East Flexford Lane (signed Crann Dara and The Folly). Stay on this farm road for 0.4 miles where the electric gates to Flexford Farmhouse will be found on the left-hand side. If you miss the turning, continue on the A31 and follow the sign to Farnham and repeat as above.

NB: East Flexford Lane is a privately owned farm track with occasional potholes. It would be advisable not to turn up in a low slung car.

Property information

Tenure: Freehold
Local Authority: Guildford Borough Council: 01483 505050
Council Tax: Band G
EPC Rating: E



Fixtures and fittings: A list of the fitted carpets, curtains, light fittings and other items fixed to the property which are included in the sale (or may be available by separate negotiation) will be provided by the Seller's Solicitors.
Important Notice: 1. Particulars: These particulars are not an offer or contract, nor part of one. You should not rely on statements by Knight Frank LLP in the particulars or by word of mouth or in writing ("information") as being factually accurate about the property, its condition or its value. Neither Knight Frank LLP nor any joint agent has any authority to make any representations about the property, and accordingly any information given is entirely without responsibility on the part of the agents, seller(s) or lessor(s). 2. Photos, Videos etc: The photographs, property videos and virtual viewings etc. show only certain parts of the property as they appeared at the time they were taken. Areas, measurements and distances given are approximate only. 3. Regulations etc: Any reference to alterations to, or use of, any part of the property does not mean that any necessary planning, building regulations or other consent has been obtained. A buyer or lessee must find out by inspection or in other ways that these matters have been properly dealt with and that all information is correct. 4. VAT: The VAT position relating to the property may change without notice. 5. To find out how we process Personal Data, please refer to our Group Privacy Statement and other notices at <https://www.knightfrank.com/legals/privacy-statement>.
Particulars dated March 2025. Photographs and videos dated September 2024.
All information is correct at the time of going to print. Knight Frank is the trading name of Knight Frank LLP. Knight Frank LLP is a limited liability partnership registered in England and Wales with registered number OC305934. Our registered office is at 55 Baker Street, London W1U 8AN. We use the term 'partner' to refer to a member of Knight Frank LLP, or an employee or consultant. A list of members names of Knight Frank LLP may be inspected at our registered office. If you do not want us to contact you further about our services then please contact us by either calling 020 3544 0692, email to marketing.help@knightfrank.com or post to our UK Residential Marketing Manager at our registered office (above) providing your name and address. Brochure by wordperfectprint.com

