



HOLDSHOTT HOUSE, HECKFIELD

Hampshire, RG27 0JZ



IMPRESSIVE HOME WITH PRIVATE GROUNDS OF AROUND 6.5 ACRES

This country home is approached via a gated gravel driveway and offers excellent privacy. Adorned with mature wisteria, the property blends period charm with extensive modern living, further enhanced by equestrian facilities and excellent garaging and outbuildings.



Grade II Listed

Tenure: Freehold

Local Authority: Hart

Council Tax band: H

Services: Mains electricity and water. Oil heating. Private drainage.



SPACIOUS & VERSATILE FAMILY LIVING

Once known as Putham Hall, the oldest part of the property appears on a 1774 parish map. The house includes a grand entrance hall with fireplace, oak-panelled hallway, and sweeping staircase. Reception rooms include a formal drawing room with garden access and several flexible spaces. At its heart is an open-plan kitchen and dining area with Neptune cabinetry, bespoke island with Everhot, pantry, and utility/boot room. Oak and glass doors open to the garden, and there is also a lower ground floor room. The upper floors feature eight ensuite bedrooms, including a principal suite with Juliet balcony, dressing room, and luxurious bathroom. The grounds offer gardens, terraces, orchard, woodland with pond, and lawns. Equestrian facilities include two stables, menage, and paddock. A detached outbuilding provides garages, carports, and a studio. This is a versatile home in a peaceful rural setting.







Approximate Floor Area

Basement = 19.7 sq m / 212 sq ft

Ground Floor = 253.1 sq m / 2,724 sq ft

First Floor = 198.4 sq m / 2,135 sq ft

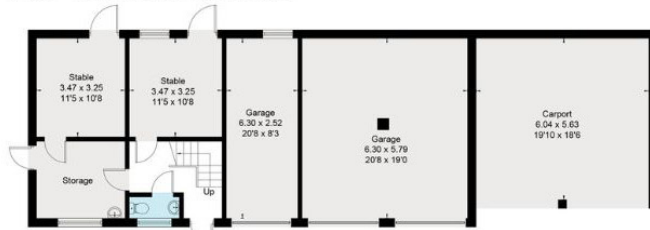
Second Floor = 63.4 sq m / 682 sq ft

Outbuildings = 193.3 sq m / 2,081 sq ft (Excluding Carport)

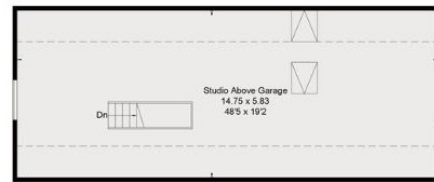
Total = 727.9 sq m / 7,834 sq ft

Outbuildings = 193.3 sq m / 2,081 sq ft (Excluding Carport)

Total = 727.9 sq m / 7,834 sq ft



Outbuilding -Ground Floor
(Not Shown In Actual Location / Orientation)



Outbuilding -First Floor



(Not Shown In Actual Location / Orientation)

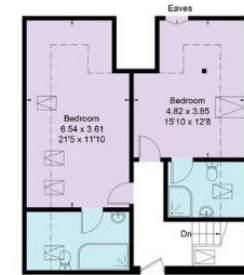


Basement

Ground Floor



First Floor



Second Floor

This plan is for layout guidance only. Not drawn to scale unless stated. Windows and door openings are approximate. Whilst every care is taken in the preparation of this plan, please check all dimensions, shapes and compass bearings before making any decisions reliant upon them. (ID767266)

We would be delighted
to tell you more.

Clive Moon

+44 1256 630976

clive.moon@knightfrank.com

Knight Frank North Hampshire

Matrix House. Basing View. Basingstoke, RG21 4FF

Laura Read

+44 1256 630978

laura.read@knightfrank.com

knightfrank.co.uk

Your partners in property

1. Particulars: These particulars are not an offer or contract, nor part of one. You should not rely on statements given by Knight Frank in the particulars, by word of mouth or in writing ("information") as being factually accurate about the property, its condition or its value. Neither Knight Frank nor any joint agent has any authority to make any representations about the property, and accordingly any information given is entirely without responsibility on the part of Knight Frank. 2. Material Information: Please note that the material information is provided to Knight Frank by third parties and is provided here as a guide only. While Knight Frank has taken steps to verify this information, we advise you to confirm the details of any such material information prior to any offer being submitted. If we are informed of changes to this information by the seller or another third party, we will use reasonable endeavours to update this as soon as practical. 3. Photos, Videos etc: The photographs, property videos and virtual viewings etc. show only certain parts of the property as they appeared at the time they were taken. Areas, measurements and distances given are approximate only. 4. Regulations etc: Any reference to alterations to, or use of, any part of the property does not mean that any necessary planning, building regulations or other consent has been obtained. A buyer must find out by inspection or in other ways that these matters have been properly dealt with and that all information is correct. 5. Fixtures and fittings: A list of the fitted carpets, curtains, light fittings and other items fixed to the property which are included in the sale (or may be available by separate negotiation) will be provided by the Seller's Solicitors. 6. VAT: The VAT position relating to the property may change without notice. 7. To find out how we process Personal Data, please refer to our Group Privacy Statement and other notices at <https://www.knightfrank.com/legals/privacy-statement>.

Particulars dated May 2024. Photographs and videos dated May 2024. All information is correct at the time of going to print. Knight Frank is the trading name of Knight Frank LLP. Knight Frank LLP is a limited liability partnership registered in England and Wales with registered number OC305934. Our registered office is at 55 Baker Street, London W1U 8AN. We use the term 'partner' to refer to a member of Knight Frank LLP, or an employee or consultant. A list of members names of Knight Frank LLP may be inspected at our registered office. If you do not want us to contact you further about our services then please contact us by either calling 020 3544 0692, email to marketing.help@knightfrank.com or post to our UK Residential Marketing Manager at our registered office (above) providing your name and address.