



COACHMANS COTTAGE, SOUTHTINGTON

Hampshire, RG25 3DA



AN INVITING, CHARACTERFUL HOME WITH STYLISH INTERIORS

This former coach house offers a wonderful selection of rooms that are full charm and character. Throughout the home, the interiors are beautifully appointed beginning with the wonderful entrance hall that features a handsome fireplace with a gas fire.



4



3



5

EPC

E

Local Authority: Basingstoke and Deane

Council Tax band: G

Tenure: Freehold

Services: Mains water, electricity and drainage. Mains gas fired central heating.



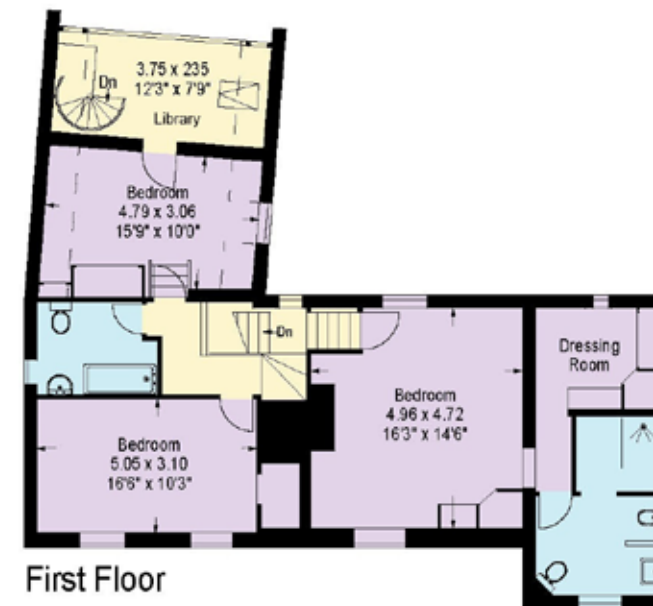
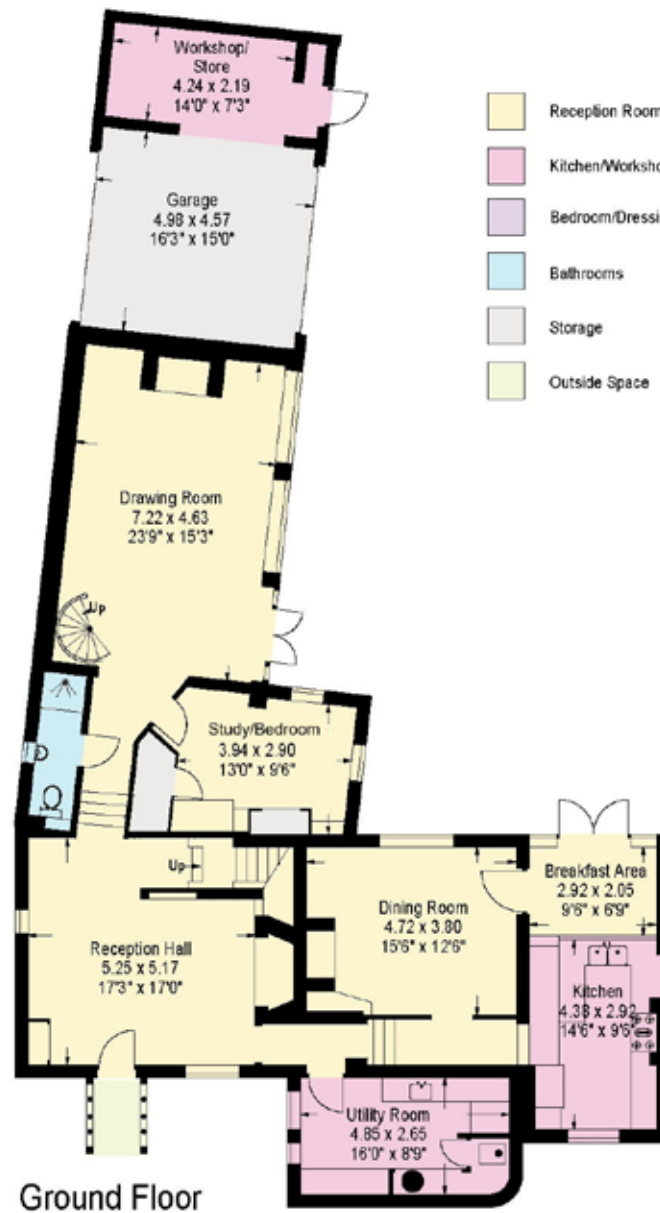
CHARACTERFUL HOME WITH STYLISH INTERIORS

A vaulted drawing room boasts an impressive fireplace and a mezzanine library area, adding both grandeur and functionality with a separate study/sitting room that both overlook the charming courtyard garden. The kitchen includes a built-in breakfast table before double doors open onto the courtyard, seamlessly blending indoor and outdoor living. There is also a dining room, perfect for formal entertaining. A utility room ensures that laundry tasks remain discreetly tucked away. There is a downstairs WC and shower adding to the overall flexibility of the accommodation. The principal bedroom is a luxurious retreat, with a dressing room and well-appointed en suite. Two additional double bedrooms offer further comfort, served by a bathroom. Outside, a shared gravel driveway provides access to a double garage, which leads to further parking. The courtyard garden is a private haven, with a well and pond, this is an ideal space for alfresco dining, making this home a perfect blend of style and comfort.









House Approximate Gross Internal Area = 260 sq m / 2799 sq ft
 Garage & Workshop = 35 sq m / 377 sq ft
 Total = 295 sq m / 3175 sq ft

This plan is for layout guidance only. Not drawn to scale unless stated. Windows and door openings are approximate. Whilst every care is taken in the preparation of this plan, please check all dimensions, shapes and compass bearings before making any decisions reliant upon them. (ID767266)

We would be delighted
to tell you more.

Clive Moon

01256 350 600

clive.moon@knightfrank.com

Knight Frank North Hampshire

Matrix House, Basing View, RG21 4FF

knightfrank.co.uk

Your partners in property

1. Particulars: These particulars are not an offer or contract, nor part of one. You should not rely on statements given by Knight Frank in the particulars, by word of mouth or in writing ("information") as being factually accurate about the property, its condition or its value. Neither Knight Frank nor any joint agent has any authority to make any representations about the property, and accordingly any information given is entirely without responsibility on the part of Knight Frank. 2. Material Information: Please note that the material information is provided to Knight Frank by third parties and is provided here as a guide only. While Knight Frank has taken steps to verify this information, we advise you to confirm the details of any such material information prior to any offer being submitted. If we are informed of changes to this information by the seller or another third party, we will use reasonable endeavours to update this as soon as practical. 3. Photos, Videos etc: The photographs, property videos and virtual viewings etc. show only certain parts of the property as they appeared at the time they were taken. Areas, measurements and distances given are approximate only. 4. Regulations etc: Any reference to alterations to, or use of, any part of the property does not mean that any necessary planning, building regulations or other consent has been obtained. A buyer must find out by inspection or in other ways that these matters have been properly dealt with and that all information is correct. 5. Fixtures and fittings: A list of the fitted carpets, curtains, light fittings and other items fixed to the property which are included in the sale (or may be available by separate negotiation) will be provided by the Seller's Solicitors. 6. VAT: The VAT position relating to the property may change without notice. 7. To find out how we process Personal Data, please refer to our Group Privacy Statement and other notices at <https://www.knightfrank.com/legals/privacy-statement>.

Particulars dated February 2025. Photographs and videos dated February 2025. All information is correct at the time of going to print. Knight Frank is the trading name of Knight Frank LLP. Knight Frank LLP is a limited liability partnership registered in England and Wales with registered number OC305934. Our registered office is at 55 Baker Street, London W1U 8AN. We use the term 'partner' to refer to a member of Knight Frank LLP, or an employee or consultant. A list of members names of Knight Frank LLP may be inspected at our registered office. If you do not want us to contact you further about our services then please contact us by either calling 020 3544 0692, email to marketing.help@knightfrank.com or post to our UK Residential Marketing Manager at our registered office (above) providing your name and address.