



MANOR FARM HOUSE, CLIDDESSEN

Hampshire, RG25 2JB



PERIOD HOME WITH OUTSTANDING POTENTIAL

This elegant Grade II listed Georgian-style home, dating from the early 19th century, features a wide symmetrical façade with Flemish bond brickwork, plaster pilasters, and a later brick porch with parapet portico.



Local Authority: Basingstoke and Deane Borough Council

Council Tax band: G

Tenure: Freehold

Services: Mains electricity, gas, water and drainage



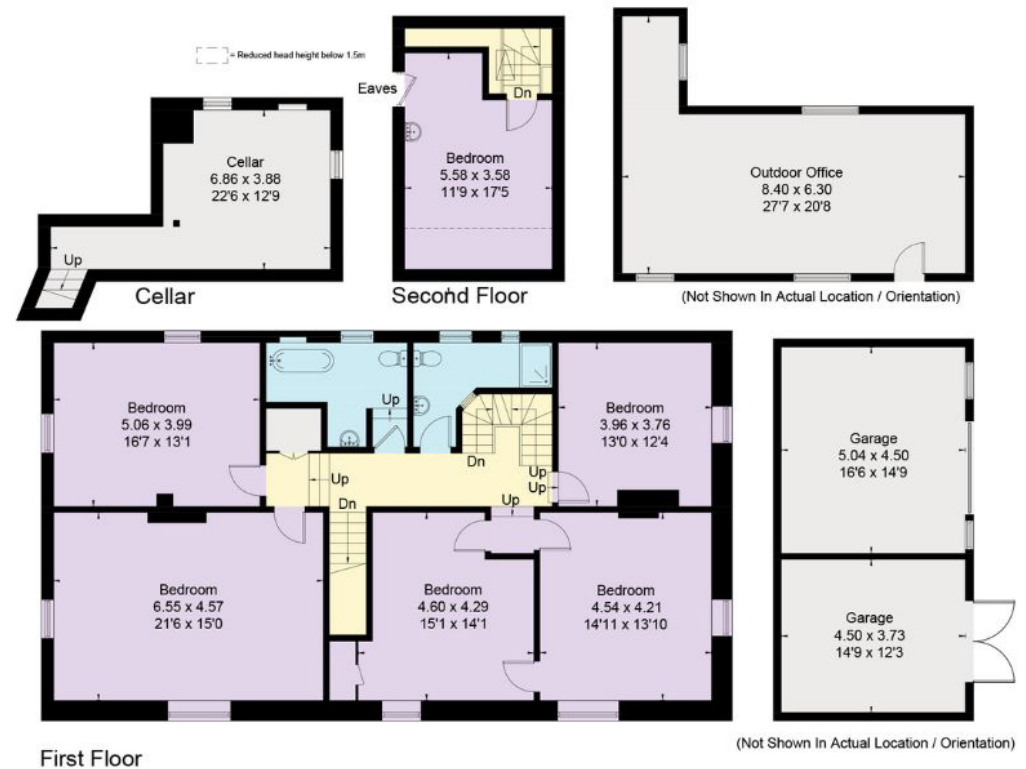
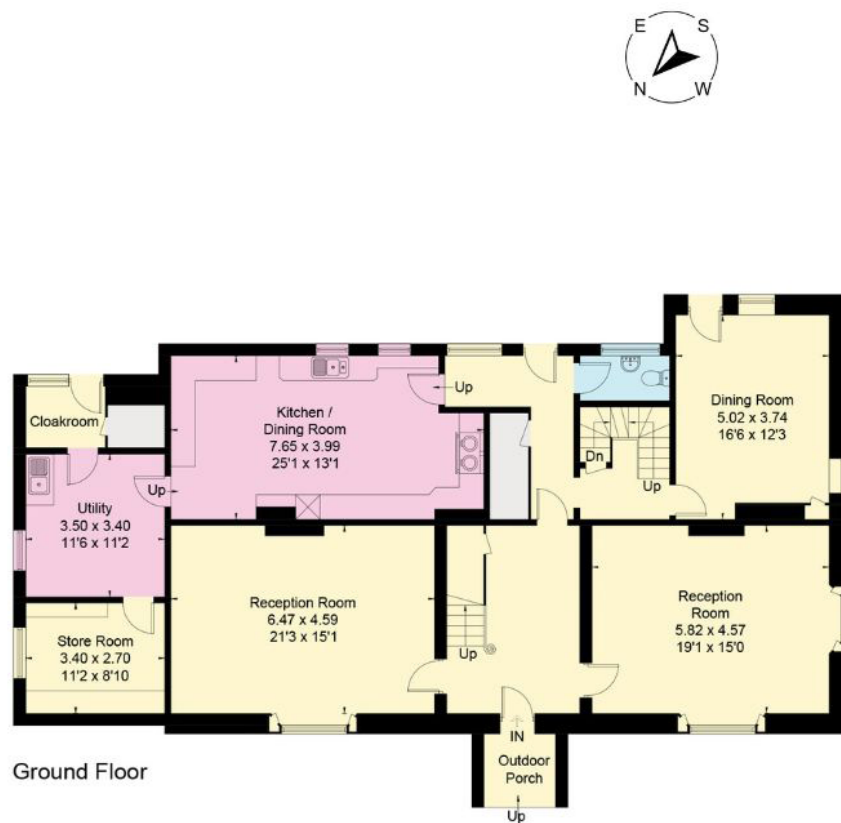
EXCELLENT INTERNAL PROPORTIONS

A central front door arrives into a generous reception hall with a traditional balustrade staircase. Period features include wide sash windows with folding shutters, architrave-panelled doors, and open fireplaces in the drawing room and dining rooms—one with a marble surround. The kitchen has terracotta-tiled flooring, fitted units, and a built-in bench for everyday dining, with an adjoining utility room leading to a pantry and a cloakroom with outside access. Upstairs are five well-proportioned bedrooms, three of which are double aspect, with a sixth bedroom on the second floor. A family bathroom and separate shower room serve all rooms. Additional storage is provided by the cellar. The garden wraps around the property. A brick-paved terrace leads to a private lawned garden with mature trees and shrubs. There are two detached attractive outbuildings, one used as a large home office, the other a double garage. The property presents a rare chance to update a period home of charm and character.









Approximate Gross Internal Area = 3969 sq ft / 359.3 sq m
 Garage & Outbuilding Approximate Internal Area = 822 sq ft / 76.4 sq m
 Total Approximate Internal Area = 4691 sq ft / 435 sq m

This plan is for layout guidance only. Not drawn to scale unless stated. Windows and door openings are approximate. Whilst every care is taken in the preparation of this plan, please check all dimensions, shapes and compass bearings before making any decisions reliant upon them. (ID767266)

We would be delighted
to tell you more.

Clive Moon

+44 125 663 0976

clive.moon@knightfrank.com

Knight Frank North Hampshire

Matrix House, Basing View, Basingstoke, RG21 4FF

knightfrank.co.uk

Your partners in property

1. Particulars: These particulars are not an offer or contract, nor part of one. You should not rely on statements given by Knight Frank in the particulars, by word of mouth or in writing ("information") as being factually accurate about the property, its condition or its value. Neither Knight Frank nor any joint agent has any authority to make any representations about the property, and accordingly any information given is entirely without responsibility on the part of Knight Frank. 2. Material Information: Please note that the material information is provided to Knight Frank by third parties and is provided here as a guide only. While Knight Frank has taken steps to verify this information, we advise you to confirm the details of any such material information prior to any offer being submitted. If we are informed of changes to this information by the seller or another third party, we will use reasonable endeavours to update this as soon as practical. 3. Photos, Videos etc: The photographs, property videos and virtual viewings etc. show only certain parts of the property as they appeared at the time they were taken. Areas, measurements and distances given are approximate only. 4. Regulations etc: Any reference to alterations to, or use of, any part of the property does not mean that any necessary planning, building regulations or other consent has been obtained. A buyer must find out by inspection or in other ways that these matters have been properly dealt with and that all information is correct. 5. Fixtures and fittings: A list of the fitted carpets, curtains, light fittings and other items fixed to the property which are included in the sale (or may be available by separate negotiation) will be provided by the Seller's Solicitors. 6. VAT: The VAT position relating to the property may change without notice. 7. To find out how we process Personal Data, please refer to our Group Privacy Statement and other notices at <https://www.knightfrank.com/legals/privacy-statement>.

Particulars dated May 2025, Photographs and videos dated April 2025. All information is correct at the time of going to print. Knight Frank is the trading name of Knight Frank LLP. Knight Frank LLP is a limited liability partnership registered in England and Wales with registered number OC305934. Our registered office is at 55 Baker Street, London W1U 8AN. We use the term 'partner' to refer to a member of Knight Frank LLP, or an employee or consultant. A list of members names of Knight Frank LLP may be inspected at our registered office. If you do not want us to contact you further about our services then please contact us by either calling 020 3544 0692, email to marketing.help@knightfrank.com or post to our UK Residential Marketing Manager at our registered office (above) providing your name and address.