



## THE POUND HOUSE, SILCHESTER

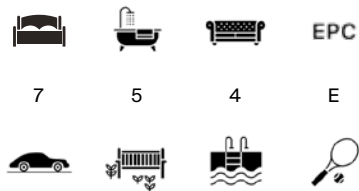
RG7 2LL





# DISTINGUISHED 18TH CENTURY GRADE II LISTED COUNTRY HOME

Set within just over six acres of sweeping parkland-style gardens, the property is brimming with period charm. With a combination of original features and spacious accommodation, this home is ready to be tailored for modern family living.



Local Authority: Basingstoke and Deane Borough Council

Council Tax band: H

Tenure: Freehold

Coach House EPC: D

Services: Mains electricity, mains water, oil central heating and private drainage





## PEACFULLY LOCATED IN A SEMI-RURAL LOCATION

The house offers four reception rooms, including a sitting room, dining room, and a bright drawing room with double doors opening to a garden room conservatory overlooking the walled garden. Both the drawing room and kitchen feature bay windows framing the gardens, with multiple access points creating a seamless indoor-outdoor connection. The principal bedroom enjoys the same bay-end garden view and opens onto a private balcony. A walk-through dressing area leads to an en suite, while an adjoining bedroom offers the option of a luxurious double suite. Across the first and second floors are seven bedrooms, served by multiple bath and shower rooms. A gated driveway leads to a detached coach house with a self-contained annexe, pool services and changing facilities, a two-bay garage, and a large cellar beneath. The south-east facing gardens feature a sun terrace, walled white rose garden with white blossom trees, outdoor pool with terrace, tennis court, and rolling lawns leading to a tranquil brook.



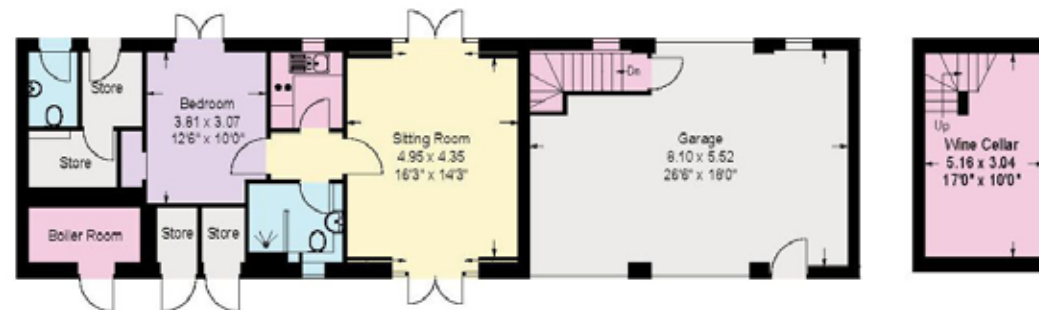
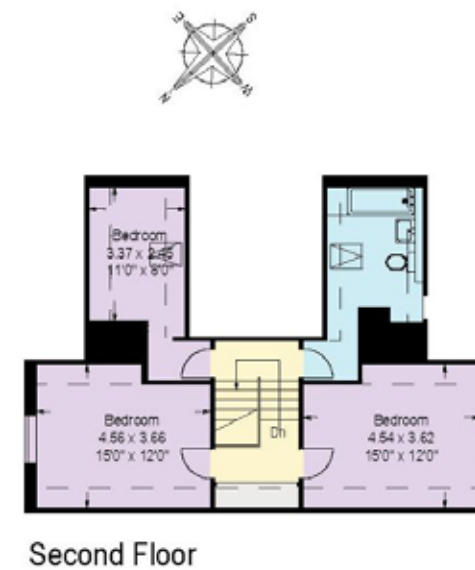
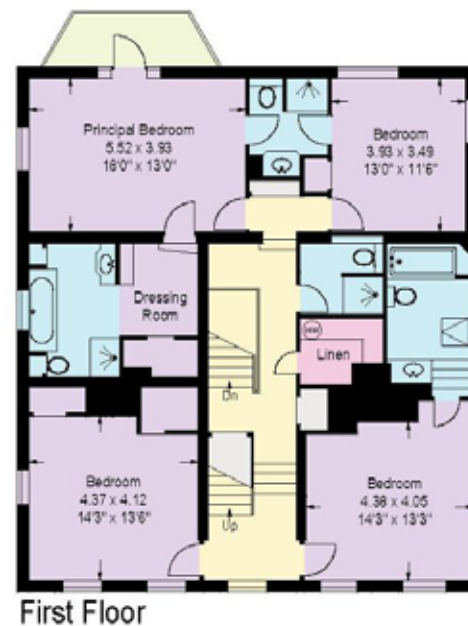
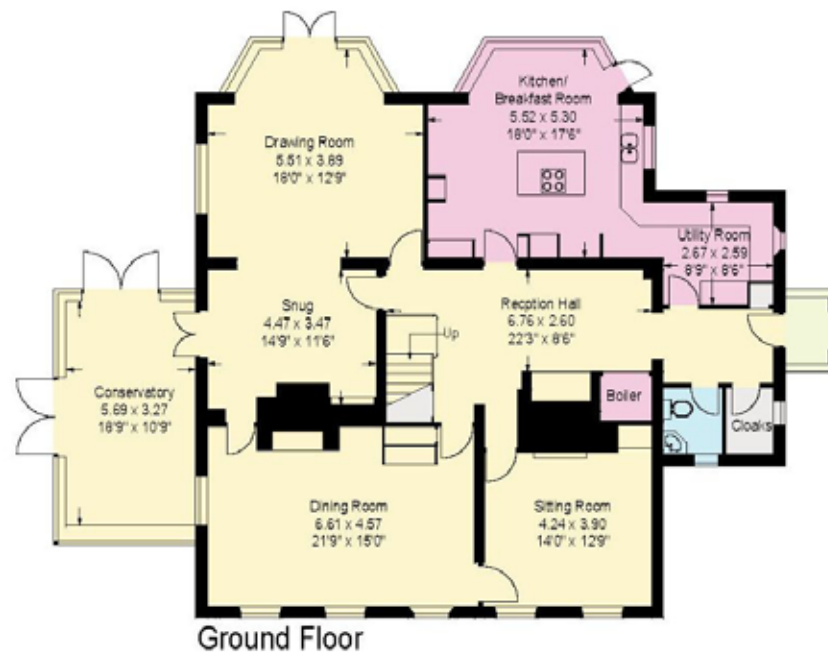












Approximate Gross Internal Area = 506 sq m / 5446 sq ft  
 Main House Internal Area - 4219 sq ft / 392 sq m  
 Coach House (including garage) - 1227 sq ft / 114 sq m

This plan is for layout guidance only. Not drawn to scale unless stated. Windows and door openings are approximate. Whilst every care is taken in the preparation of this plan, please check all dimensions, shapes and compass bearings before making any decisions reliant upon them. (ID767266)

We would be delighted  
to tell you more.

**Laura Read**

+44 1256 630 978

[laura.read@knightfrank.com](mailto:laura.read@knightfrank.com)

**Knight Frank North Hampshire**

Matrix House, Basing View, Basingstoke, RG21 4FF

**Clive Moon**

+44 1256 630 976

[clive.moon@knightfrank.com](mailto:clive.moon@knightfrank.com)

**[knightfrank.co.uk](https://www.knightfrank.co.uk)**

**Your partners in property**

1. Particulars: These particulars are not an offer or contract, nor part of one. You should not rely on statements given by Knight Frank in the particulars, by word of mouth or in writing ("information") as being factually accurate about the property, its condition or its value. Neither Knight Frank nor any joint agent has any authority to make any representations about the property, and accordingly any information given is entirely without responsibility on the part of Knight Frank. 2. Material Information: Please note that the material information is provided to Knight Frank by third parties and is provided here as a guide only. While Knight Frank has taken steps to verify this information, we advise you to confirm the details of any such material information prior to any offer being submitted. If we are informed of changes to this information by the seller or another third party, we will use reasonable endeavours to update this as soon as practical. 3. Photos, Videos etc: The photographs, property videos and virtual viewings etc. show only certain parts of the property as they appeared at the time they were taken. Areas, measurements and distances given are approximate only. 4. Regulations etc: Any reference to alterations to, or use of, any part of the property does not mean that any necessary planning, building regulations or other consent has been obtained. A buyer must find out by inspection or in other ways that these matters have been properly dealt with and that all information is correct. 5. Fixtures and fittings: A list of the fitted carpets, curtains, light fittings and other items fixed to the property which are included in the sale (or may be available by separate negotiation) will be provided by the Seller's Solicitors. 6. VAT: The VAT position relating to the property may change without notice. 7. To find out how we process Personal Data, please refer to our Group Privacy Statement and other notices at <https://www.knightfrank.com/legals/privacy-statement>.

Particulars dated April 2025. Photographs and videos dated April 2025. All information is correct at the time of going to print. Knight Frank is the trading name of Knight Frank LLP. Knight Frank LLP is a limited liability partnership registered in England and Wales with registered number OC305934. Our registered office is at 55 Baker Street, London W1U 8AN. We use the term 'partner' to refer to a member of Knight Frank LLP, or an employee or consultant. A list of members names of Knight Frank LLP may be inspected at our registered office. If you do not want us to contact you further about our services then please contact us by either calling 020 3544 0692, email to [marketing.help@knightfrank.com](mailto:marketing.help@knightfrank.com) or post to our UK Residential Marketing Manager at our registered office (above) providing your name and address.