



ROSE COTTAGE, 10 RECTORY ROAD, OAKLEY

Hampshire, RG23 7LJ



CHARMING FAMILY HOME WITH ANNEXE IN ABOUT 0.48 ACRES

An attractive family house offering an abundance of charm, combining modern interiors with original character features. The property boasts light-filled accommodation throughout, creating a welcoming and warm atmosphere for family living.



6



3



4

EPC

D

Local Authority: Basingstoke & Deane

Council Tax band: F

Tenure: Freehold

Services House: Mains water, gas, electricity and drainage.

Services Annexe: Mains water, gas and electricity. Private drainage.



LOCATED IN A PRETTY & SOUGHT-AFTER VILLAGE

Upon entry you're welcomed by a spacious reception hall with an original inglenook open fireplace leading to a bright sitting room with an original inglenook open fireplace and large south-facing window. Running along the back of the house is the exceptional family kitchen measuring over 36ft in width – with area for dining and relaxing. This expansive space boasts double doors that open out to the garden. Off the hall are a study, utility room and WC. The sitting room connects to a garden/games room with garden access, a WC and entry to a self-contained two-bedroom annexe and the integral garage. The annexe includes its own reception room, kitchen, shower room and front garden. Upstairs, the principal bedroom features an en-suite and dressing room, while three further double bedrooms share a family bathroom. Outside, wooden gates lead to a gravel drive, offering ample parking, and garage. The large rear garden overlooks fields and includes a terrace, wide lawn, stone wall, large shed and a powered summerhouse.





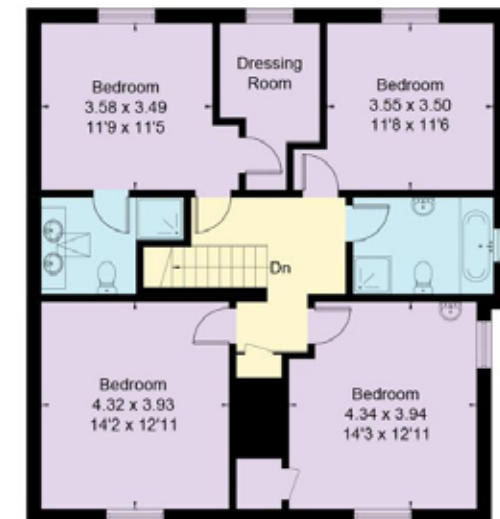


Approximate Floor Area = 317.9 sq m / 3422 sq ft (Including Garage / Annexe)



Ground Floor

Annex



First Floor

This plan is for layout guidance only. Not drawn to scale unless stated. Windows and door openings are approximate. Whilst every care is taken in the preparation of this plan, please check all dimensions, shapes and compass bearings before making any decisions reliant upon them. (ID767266)

We would be delighted
to tell you more.

Clive Moon

01256 350600

clive.moon@knightfrank.com

Knight Frank North Hampshire

Matrix House, Basing View

Basingstoke RG21 4FF

knightfrank.co.uk

Your partners in property

1. Particulars: These particulars are not an offer or contract, nor part of one. You should not rely on statements given by Knight Frank in the particulars, by word of mouth or in writing ("information") as being factually accurate about the property, its condition or its value. Neither Knight Frank nor any joint agent has any authority to make any representations about the property, and accordingly any information given is entirely without responsibility on the part of Knight Frank. 2. Material Information: Please note that the material information is provided to Knight Frank by third parties and is provided here as a guide only. While Knight Frank has taken steps to verify this information, we advise you to confirm the details of any such material information prior to any offer being submitted. If we are informed of changes to this information by the seller or another third party, we will use reasonable endeavours to update this as soon as practical. 3. Photos, Videos etc: The photographs, property videos and virtual viewings etc. show only certain parts of the property as they appeared at the time they were taken. Areas, measurements and distances given are approximate only. 4. Regulations etc: Any reference to alterations to, or use of, any part of the property does not mean that any necessary planning, building regulations or other consent has been obtained. A buyer must find out by inspection or in other ways that these matters have been properly dealt with and that all information is correct. 5. Fixtures and fittings: A list of the fitted carpets, curtains, light fittings and other items fixed to the property which are included in the sale (or may be available by separate negotiation) will be provided by the Seller's Solicitors. 6. VAT: The VAT position relating to the property may change without notice. 7. To find out how we process Personal Data, please refer to our Group Privacy Statement and other notices at <https://www.knightfrank.com/legals/privacy-statement>.

Particulars dated April 2025. Photographs and videos dated April 2025. All information is correct at the time of going to print. Knight Frank is the trading name of Knight Frank LLP. Knight Frank LLP is a limited liability partnership registered in England and Wales with registered number OC305934. Our registered office is at 55 Baker Street, London W1U 8AN. We use the term 'partner' to refer to a member of Knight Frank LLP, or an employee or consultant. A list of members names of Knight Frank LLP may be inspected at our registered office. If you do not want us to contact you further about our services then please contact us by either calling 020 3544 0692, email to marketing.help@knightfrank.com or post to our UK Residential Marketing Manager at our registered office (above) providing your name and address.