










MANOR FARM HOUSE

North Waltham, Hampshire



A WONDERFUL COUNTRY HOUSE

On the edge of a sought-after Hampshire village with far reaching views,
a swimming pool and tennis court.

			EPC
6	3	3	D
			
5.99 acres			

Distances: Overton 3.5 miles, Basingstoke 7.6 miles, Winchester 13 miles, M3 (J7) 2 miles,
London Waterloo via Basingstoke, Micheldever or Overton Stations from 44 minutes
(All distances and times are approximate)

Local Authority: Basingstoke and Deane
Council Tax band: H
Tenure: Freehold



A LOVELY RURAL SETTING

Manor Farm House is located on the edge of the pretty village of North Waltham, within which is a village shop, primary school, church and a public house. The nearby major centres of Basingstoke and Winchester provide a broader range of amenities. Independent schools nearby include Wellesley Prep, Cheam, Farleigh School, St Swithuns, Lord Wandsworth College and Winchester Colleges. Communication links are first class with easy access onto the nearby M3 and mainline stations to London Waterloo within a short drive. There are golf courses at both Overton and Dummer, a livery yard for riding close by and numerous footpaths and bridleways throughout the adjoining countryside.

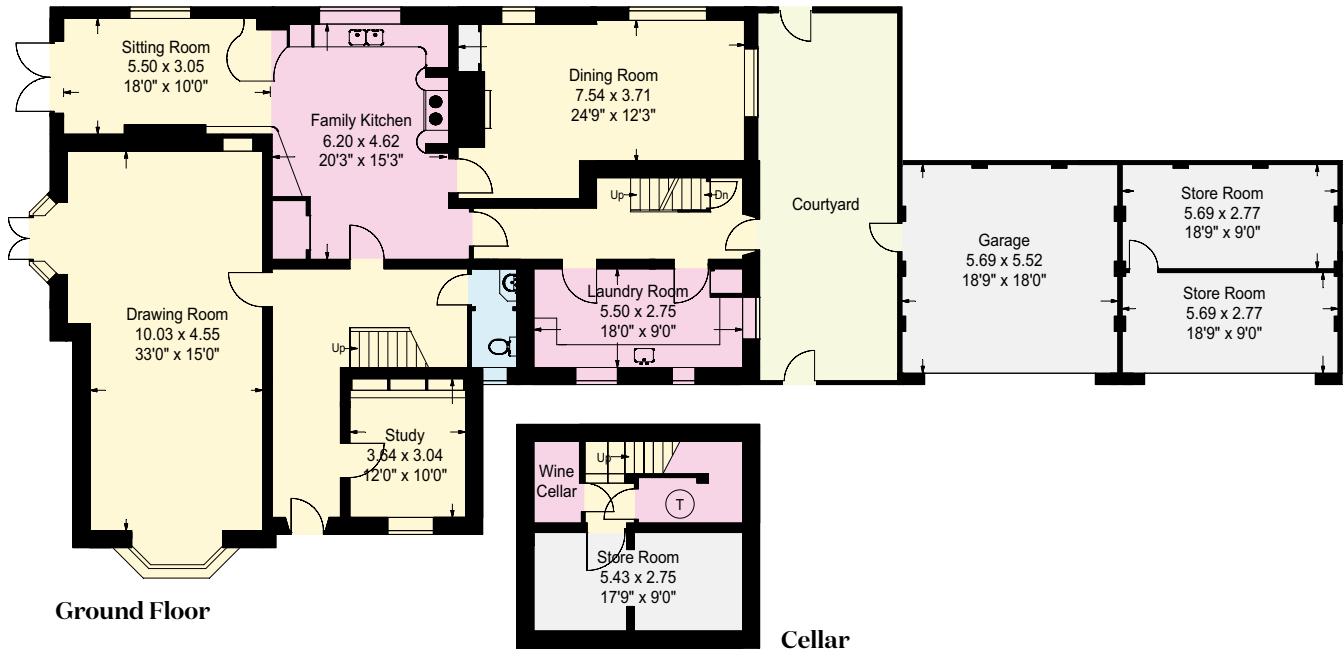
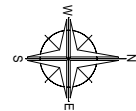
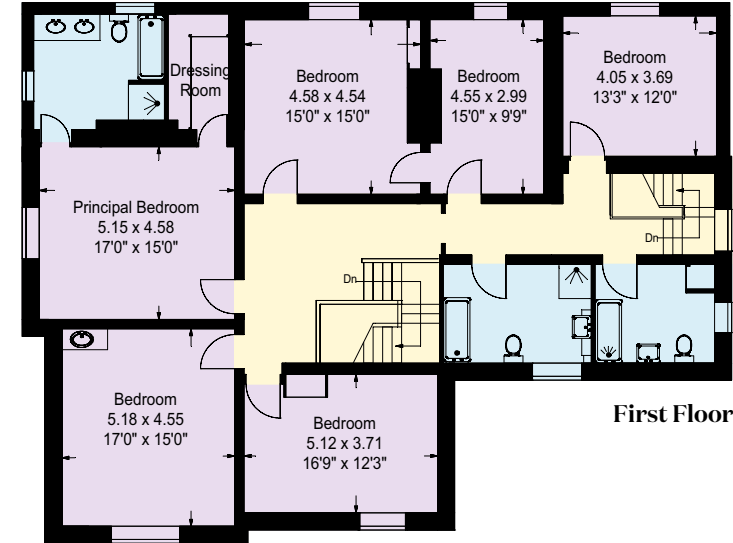


MANOR FARM HOUSE

Manor Farm House is an excellent Victorian country house with wonderful well-proportioned rooms and far reaching views. You are welcomed by a wide entrance hall with a study to the right and a fabulous double drawing room with views over the garden and fields beyond. To the rear of the house is a large family kitchen with an island, an AGA and a sitting room with an open fire. There is a separate dining room too with excellent ceiling heights, perfect for entertaining.

The grand staircase is thought to date back to Jacobean times and was rescued from a local old Manor House after a fire. Upstairs there are six well-proportioned bedrooms and three bathrooms. The principal bedroom has lovely views over the surrounding fields, an en suite bathroom and walk-in wardrobe.





Approximate Gross Internal Area
House: 4704sq.ft. (Including Cellar), or 667sq.ft.

This plan is for layout guidance only. Not drawn to scale unless stated. Windows and door openings are approximate. Whilst every care is taken in the preparation of this plan, please check all dimensions, shapes and compass bearings before making any decisions reliant upon them.

GARDENS AND GROUNDS

Manor Farm House sits beautifully in approximately six acres of grounds offering fine open views all around with a swimming pool and tennis court. With a fabulous formal lawn, a kitchen garden and paddocks, the grounds are well established and perfect for family living – including a very impressive tree house. Parking is provided on the front driveway and within a detached double bay garage with storage.



We would be delighted
to tell you more.

Clive Moon

01256 630976

clive.moon@knightfrank.com

Knight Frank North Hampshire

Matrix House, Basing View

Basingstoke, RG21 4FF

Hattie Young

020 7861 5497

hattie.young@knightfrank.com

Knight Frank Country Department

55 Baker Street, London

W1U 8AN

[knightfrank.co.uk](https://www.knightfrank.co.uk)

Your partners in property

1. Particulars: These particulars are not an offer or contract, nor part of one. You should not rely on statements given by Knight Frank in the particulars, by word of mouth or in writing ("information") as being factually accurate about the property, its condition or its value. Neither Knight Frank nor any joint agent has any authority to make any representations about the property, and accordingly any information given is entirely without responsibility on the part of Knight Frank. 2. Material Information: Please note that the material information is provided to Knight Frank by third parties and is provided here as a guide only. While Knight Frank has taken steps to verify this information, we advise you to confirm the details of any such material information prior to any offer being submitted. If we are informed of changes to this information by the seller or another third party, we will use reasonable endeavours to update this as soon as practical. 3. Photos, Videos etc: The photographs, property videos and virtual viewings etc. show only certain parts of the property as they appeared at the time they were taken. Areas, measurements and distances given are approximate only. 4. Regulations etc: Any reference to alterations to, or use of, any part of the property does not mean that any necessary planning, building regulations or other consent has been obtained. A buyer must find out by inspection or in other ways that these matters have been properly dealt with and that all information is correct. 5. Fixtures and fittings: A list of the fitted carpets, curtains, light fittings and other items fixed to the property which are included in the sale (or may be available by separate negotiation) will be provided by the Seller's Solicitors. 6. VAT: The VAT position relating to the property may change without notice. 7. To find out how we process Personal Data, please refer to our Group Privacy Statement and other notices at <https://www.knightfrank.com/legals/privacy-statement>.

Particulars dated March 2025. Photographs and videos dated March 2025. All information is correct at the time of going to print. Knight Frank is the trading name of Knight Frank LLP. Knight Frank LLP is a limited liability partnership registered in England and Wales with registered number OC305934. Our registered office is at 55 Baker Street, London W1U 8AN. We use the term 'partner' to refer to a member of Knight Frank LLP, or an employee or consultant. A list of members names of Knight Frank LLP may be inspected at our registered office. If you do not want us to contact you further about our services then please contact us by either calling 020 3544 0692, email to marketing.help@knightfrank.com or post to our UK Residential Marketing Manager at our registered office (above) providing your name and address.