



North Street, Kingsclere, Hampshire, RG20





7 North Street, Kingsclere Hampshire **RG20**

Classic period house with contemporary living in the heart of a favoured Hampshire village.





This picture perfect 19th century home is located on a tranquil, no through road in the heart of the highly sought-after village of Kingsclere, set within a conservation area. The property, while not listed, has been uniquely extended to preserve its period charm, with a symmetrical facade that exudes classic elegance.

The interior is a masterclass in contemporary luxury, featuring wide-format luxury tile floors and a soft, warm colour palette that creates a welcoming atmosphere throughout. The highlight of the home is the stunning open plan primary living space, which greets you upon entering. From the entrance hall, you are immediately drawn to the expansive view through the full-width glass wall, looking out onto the beautifully landscaped garden. This space is flooded with light and thoughtfully used with distinct areas: a cozy family seating area with a feature fireplace boasting a bio ethanol fire, a dining area, and a meticulously designed bespoke kitchen.





The kitchen seamlessly blends into the living space with its carefully chosen cabinetry finishes, concealing ample storage solutions, including a hidden breakfast cupboard complete with a Quooker tap. Brass-finished handles and taps complement the elegant white quartz worktops, while high-end appliances include a La Canche range cooker and an integrated dishwasher, offering both style and functionality.

Additional formal reception rooms include a snug and a dining room, which can also serve as a study or playroom.

The practical utility and boot room, accessible from both the front and garden, mirrors the kitchen's bespoke cabinetry and is outfitted with a double Belfast sink, providing practicality in a stylish setting. A convenient cloakroom rounds out the ground floor.

Upstairs, the principal bedroom offers a serene retreat, with a spacious en suite shower room. Four additional double bedrooms are spread across the first and second floors, all served by beautifully appointed bathrooms, featuring a luxurious mix of marble, bespoke tiling, and high end traditional fixtures.



Outside, the front of the property is framed by a charming, railed fence, with a single space driveway. A side gate leads to the rear garden, where the unique extension creates a covered, paved terrace with a reflection pool. This raised area overlooks the rest of the private garden, which features a lush lawn, established hedges, pretty trees, and a delightful stream at the far end, offering a tranquil and secluded outdoor oasis.

This unique home combines period charm with modern luxury, making it a truly exceptional retreat in the heart of one of Hampshire's most favoured villages.

Tenure: Freehold

Council Tax: Basingstoke & Deane Borough Council

Tax Band: G

Services: Mains electricity, gas, water and drainage

EPC Rating: D



Interior is a
masterclass in
contemporary
luxury.

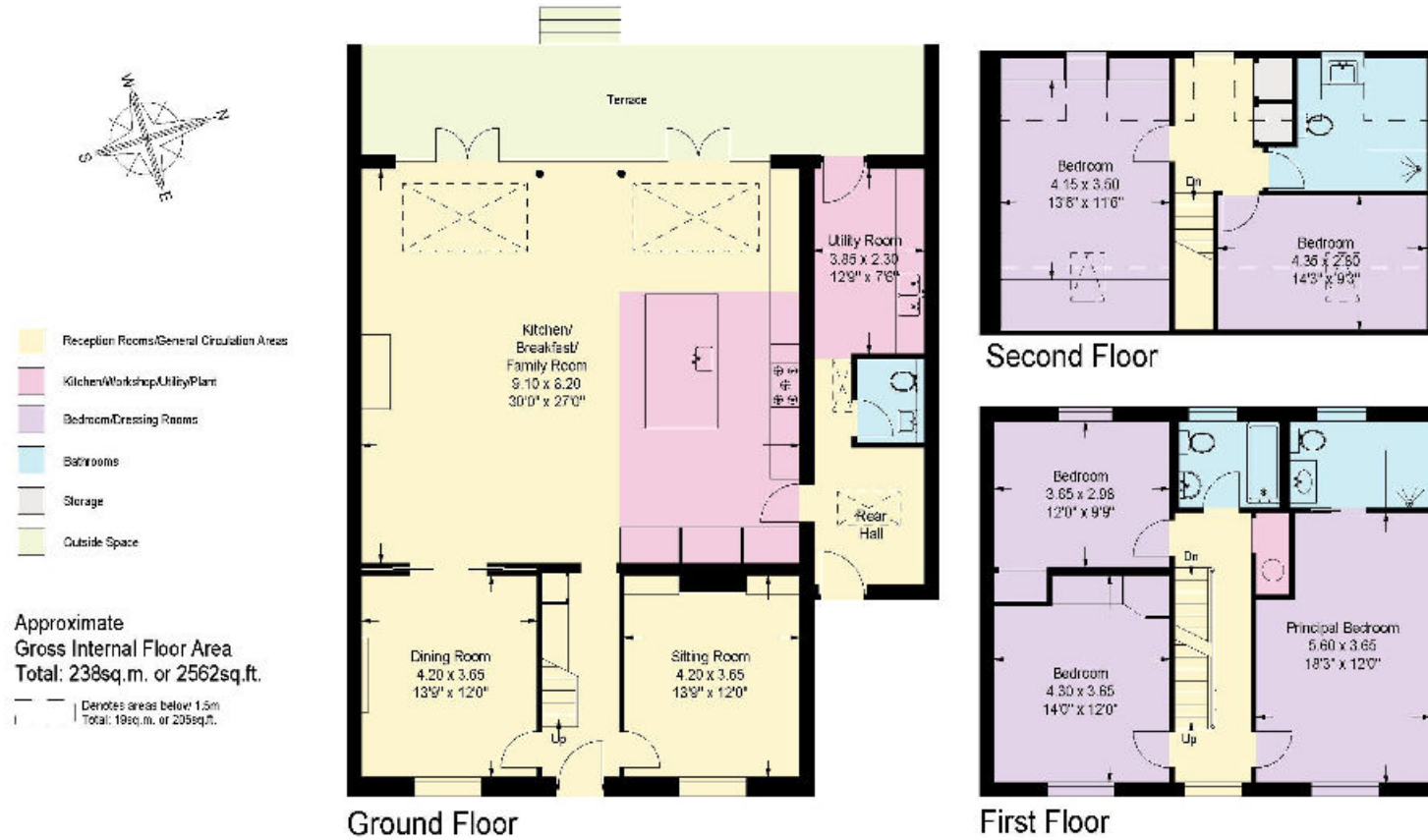


Location

Kingsclere is a pretty village between Basingstoke & Newbury and offers a charming village centre, as well as independent shops and a well-regarded primary school. This sought-after village benefits from a convenience store, public houses, dentists, doctors, chemist and a hairdresser, as well as a post office and excellent access to open countryside. Further comprehensive facilities are available in Basingstoke which includes a railway station providing direct trains to London Waterloo. Road links are also good with the A339 giving access to the M4 motorway via Newbury and the M3 via Basingstoke.



This plan is for guidance only and must not be relied upon as a statement of fact. Attention is drawn to the important notice at the bottom of this page.



Knight Frank
 North Hampshire
 Matrix House
 Basingstoke
 RG21 4FF
knightfrank.co.uk

I would be delighted to tell you more
Laura Read
 01256 630978
laura.read@knightfrank.com



Fixtures and fittings: A list of the fitted carpets, curtains, light fittings and other items fixed to the property which are included in the sale (or may be available by separate negotiation) will be provided by the Seller's Solicitors.

Important Notice: 1. Particulars: These particulars are not an offer or contract, nor part of one. You should not rely on statements by Knight Frank LLP in the particulars or by word of mouth or in writing ("information") as being factually accurate about the property, its condition or its value. Neither Knight Frank LLP nor any joint agent has any authority to make any representations about the property, and accordingly any information given is entirely without responsibility on the part of the agents, seller(s) or lessor(s). 2. Photos, Videos etc: The photographs, property videos and virtual viewings etc. show only certain parts of the property as they appeared at the time they were taken. Areas, measurements and distances given are approximate only. 3. Regulations etc: Any reference to alterations to, or use of, any part of the property does not mean that any necessary planning, building regulations or other consent has been obtained. A buyer or lessee must find out by inspection or in other ways that these matters have been properly dealt with and that all information is correct. 4. VAT: The VAT position relating to the property may change without notice. 5. To find out how we process Personal Data, please refer to our Group Privacy Statement and other notices at <https://www.knightfrank.com/legals/privacy-statement>.

Particulars dated October 2024. Photographs and videos dated October 2024.

Knight Frank is the trading name of Knight Frank LLP. Knight Frank LLP is a limited liability partnership registered in England and Wales with registered number OC305934. Our registered office is at 55 Baker Street, London W1U 8AN where you may look at a list of members' names. If we use the term 'partner' when referring to one of our representatives, that person will either be a member, employee, worker or consultant of Knight Frank LLP and not a partner in a partnership. If you do not want us to contact you further about our services then please contact us by either calling 020 3544 0692, email to marketing.help@knightfrank.com or post to our UK Residential Marketing Manager at our registered office (above) providing your name and address.