



Drove Hill, Chilbolton, Hampshire

---



# Drove Hill, Chilbolton, Stockbridge, Hampshire

---

A great family house that offers the exciting opportunity to cosmetically refurbish to current tastes. Built in 1989, constructed of brick elevations under a tiled roof with the benefit of UPVC double glazed windows and oil fired central heating. The accommodation amounts to about 1,477 sq ft and comprises a spacious drawing room with feature fireplace and glazed double doors leading to the garden. There is a separate dining room, kitchen/ breakfast room and a useful utility room. On the first floor there is a principal bedroom with dressing room and en suite bathroom, three further bedrooms and a family bathroom. There is a double garage to the front of the house, the rear garden has well-established boundaries providing a private and secluded space.

The house is located in the Test Valley village of Chilbolton which has good local amenities and lies just xx miles from picturesque Stockbridge, and 9.7 miles from Winchester. Schools include Wherwell Primary (1.8 miles) and Test Valley Secondary (4.8 miles). There are numerous private schools in the area including Farleigh, Twyford, The Pilgrims, Winchester College, Marlborough College, St Swithun's and Godolphin in Salisbury. The nearest mainline stations are at Winchester and Andover. Distances approximate.

Post Code: SO20 6AR

<https://what3words.com/spires.covers.rebounded>



4



2



2



EPC

D



Local Authority: Test Valley  
Borough Council

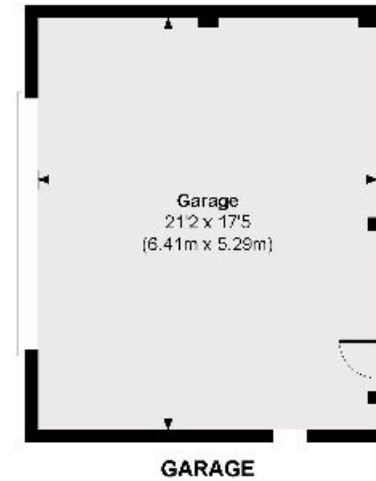
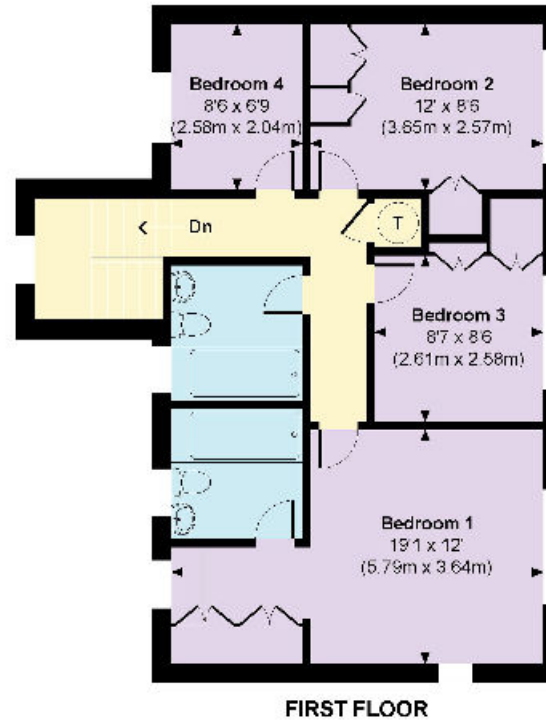
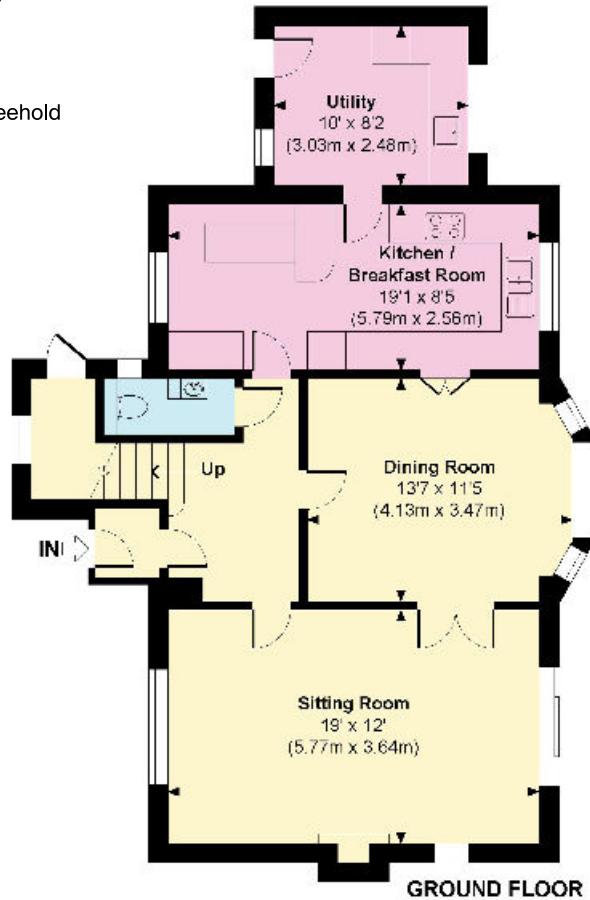
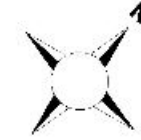
Council Tax band: D

Guide price  
**£725,000**

Tenure: available freehold

## Drove Hill

Approximate Gross Internal Area  
Main House = 1447 Sq Ft / 134.44 Sq M  
Garage = 365 Sq Ft / 33.91 Sq M  
Total = 1812 Sq Ft / 168.35 Sq M  
Outbuildings are not shown in correct orientation or location.



Knight Frank  
Winchester  
14-15 Jewry Street  
Winchester  
SO23 8RZ  
[knightfrank.co.uk](http://knightfrank.co.uk)

I would be delighted to tell you more  
Edward Hunt  
01962 677236  
[edward.hunt@knightfrank.com](mailto:edward.hunt@knightfrank.com)



Fixtures and fittings: A list of the fitted carpets, curtains, light fittings and other items fixed to the property which are included in the sale (or may be available by separate negotiation) will be provided by the Seller's Solicitors.

Important Notice: 1. Particulars: These particulars are not an offer or contract, nor part of one. You should not rely on statements by Knight Frank LLP in the particulars or by word of mouth or in writing ("information") as being factually accurate about the property, its condition or its value. Neither Knight Frank LLP nor any joint agent has any authority to make any representations about the property, and accordingly any information given is entirely without responsibility on the part of the agents, seller(s) or lessor(s). 2. Photos, Videos etc: The photographs, property videos and virtual viewings etc. show only certain parts of the property as they appeared at the time they were taken. Areas, measurements and distances given are approximate only. 3. Regulations etc: Any reference to alterations to, or use of, any part of the property does not mean that any necessary planning, building regulations or other consent has been obtained. A buyer or lessee must find out by inspection or in other ways that these matters have been properly dealt with and that all information is correct. 4. VAT: The VAT position relating to the property may change without notice. 5. To find out how we process Personal Data, please refer to our Group Privacy Statement and other notices at <https://www.knightfrank.com/legals/privacy-statement>.

Particulars dated August 2023. Photographs and videos dated August 2023.

All information is correct at the time of going to print. Knight Frank is the trading name of Knight Frank LLP. Knight Frank LLP is a limited liability partnership registered in England and Wales with registered number OC305934. Our registered office is at 55 Baker Street, London W1U 8AN. We use the term 'partner' to refer to a member of Knight Frank LLP or an employee or consultant. A list of members names of Knight Frank LLP may be inspected at our registered office. If you do not want us to contact you further about our services then please contact us by either calling 020 3544 0692, email to [marketing.help@knightfrank.com](mailto:marketing.help@knightfrank.com) or post to our UK Residential Marketing Manager at our registered office (above) providing your name and address.