



LONG ACRE

Sarson Lane, Amport



LONG ACRE AMPORT

Exceptional 5 bedroom home with separate 2 bedroom cottage within
stunning south-facing gardens, offering the perfect balance of
seclusion and community.



5



5



3

EPC

E

Local Authority: Test Valley Borough Council

Council Tax band: G

Tenure: Freehold

Guide Price: £1,695,000



LONG ACRE AMPORT

With generous proportions throughout, the main home offers five spacious double bedrooms—each with an en suite—making it ideal for families, guests, or those seeking flexible living arrangements. The renovations have elevated every room, with high-end finishes, elegant design, and an effortless flow between living spaces. The heart of the home is the bright and expansive kitchen and dining area, which opens out to the breathtaking gardens—a perfect setting for entertaining or simply soaking in the tranquillity. Complementing the main house is a fully self-contained 2-bedroom cottage, ideal for extended family, guests, a home office, or income potential. With its own access and private outlook, it offers complete independence while still being a part of the estate. Step outside into truly spectacular, south-facing gardens that have been meticulously designed for both beauty and ease of maintenance. With sweeping lawns, mature planting, and multiple seating areas, creating an ever-changing backdrop.







The Cottage



The Cottage



The Cottage

Long Acre

Approximate Gross Internal Area

Main House = 3748 Sq Ft / 348.19 Sq M

Garage = 377 Sq Ft / 35.02 Sq M

Long Acre Cottage = 1001 Sq Ft / 93.00 Sq M

Gym = 216 Sq Ft / 20.04 Sq M

Sauna = 30 Sq Ft / 2.77 Sq M

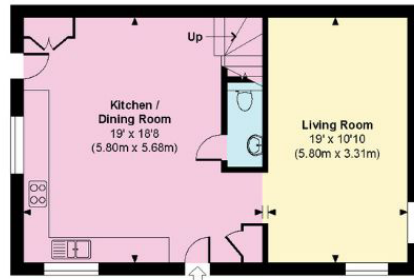
Green House = 83 Sq Ft / 7.73 Sq M

Shed 1 = 55 Sq Ft / 5.10 Sq M

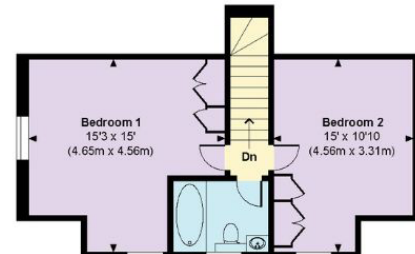
Shad 2 = 95 Sq Ft / 8.88 Sq M

Total = 5605 Sq Ft / 520.73 Sq M

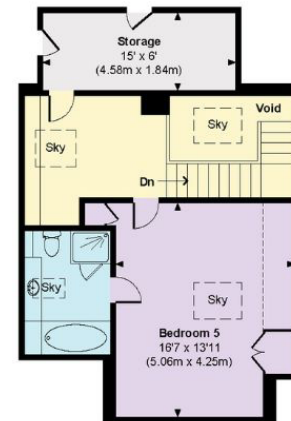
Outbuildings are not shown in correct orientation or location.
Includes areas with restricted room height but excludes void.



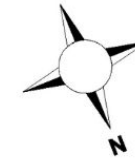
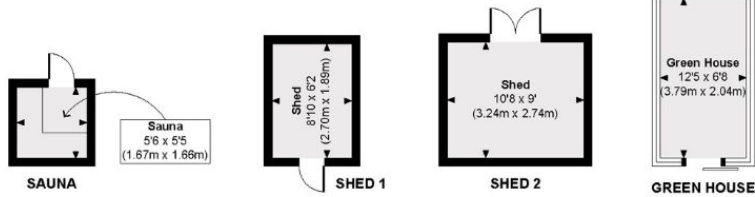
LONG ACRE COTTAGE GROUND FLOOR



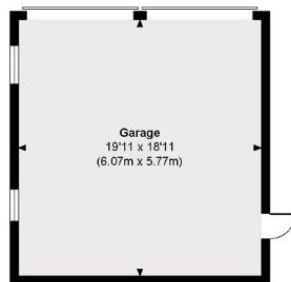
LONG ACRE COTTAGE FIRST FLOOR



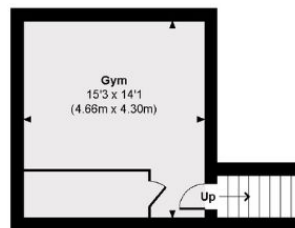
FIRST FLOOR



GROUND FLOOR



GARAGE



GYM

This plan is for layout guidance only. Not drawn to scale unless stated. Windows and door openings are approximate. Whilst every care is taken in the preparation of this plan, please check all dimensions, shapes and compass bearings before making any decisions reliant upon them. (ID767266)

We would be delighted
to tell you more.

Ed Hunt
01962 677236
edward.hunt@knightfrank.com

Knight Frank Winchester
14-15 Jewry Street
Winchester, SO23 8RZ

knightfrank.co.uk

Your partners in property

1. Particulars: These particulars are not an offer or contract, nor part of one. You should not rely on statements given by Knight Frank in the particulars, by word of mouth or in writing ("information") as being factually accurate about the property, its condition or its value. Neither Knight Frank nor any joint agent has any authority to make any representations about the property, and accordingly any information given is entirely without responsibility on the part of Knight Frank. 2. Material Information: Please note that the material information is provided to Knight Frank by third parties and is provided here as a guide only. While Knight Frank has taken steps to verify this information, we advise you to confirm the details of any such material information prior to any offer being submitted. If we are informed of changes to this information by the seller or another third party, we will use reasonable endeavours to update this as soon as practical. 3. Photos, Videos etc: The photographs, property videos and virtual viewings etc. show only certain parts of the property as they appeared at the time they were taken. Areas, measurements and distances given are approximate only. 4. Regulations etc: Any reference to alterations to, or use of, any part of the property does not mean that any necessary planning, building regulations or other consent has been obtained. A buyer must find out by inspection or in other ways that these matters have been properly dealt with and that all information is correct. 5. Fixtures and fittings: A list of the fitted carpets, curtains, light fittings and other items fixed to the property which are included in the sale (or may be available by separate negotiation) will be provided by the Seller's Solicitors. 6. VAT: The VAT position relating to the property may change without notice. 7. To find out how we process Personal Data, please refer to our Group Privacy Statement and other notices at <https://www.knightfrank.com/legals/privacy-statement>.

Particulars dated Jan 2026 and photographs dated May 2025. All information is correct at the time of going to print. Knight Frank is the trading name of Knight Frank LLP. Knight Frank LLP is a limited liability partnership registered in England and Wales with registered number OC305934. Our registered office is at 55 Baker Street, London W1U 8AN. We use the term 'partner' to refer to a member of Knight Frank LLP, or an employee or consultant. A list of members names of Knight Frank LLP may be inspected at our registered office. If you do not want us to contact you further about our services then please contact us by either calling 020 3544 0692, email to marketing.help@knightfrank.com or post to our UK Residential Marketing Manager at our registered office (above) providing your name and address.