



MERRYWAYS, OWSLEBURY

Winchester, Hampshire, SO21



OWSLEBURY, WINCHESTER

An exceptional family home, completely reconfigured and renovated to a high standard, located in a village approximately 5 miles southeast of Winchester.



4-5



3



3

EPC

D

Local Authority: Winchester City Council

Council Tax band: F

Tenure: Freehold

Property area: 2,937 - 3,166 sq ft

Guide price: £1,350,000



The welcoming entrance hall leads to a well-planned ground-floor, including a study (that can easily serve as a fifth double bedroom), opposite a shower room/WC. The kitchen/breakfast room has space for informal dining, with French doors to the garden terrace. Flowing into the formal dining room, with double doors leading into the sitting room, that features a fireplace with a wood-burning stove and French doors out to the garden. The conservatory provides an additional light-filled reception space. Additionally, the ground floor has a pantry, a China pantry, a utility room and an integral large garage. Upstairs, the principal suite includes a bedroom, a dressing room, an en suite bathroom and access to a hobby room/storage. There are three additional double bedrooms and a family bathroom. The rear garden features a paved terrace, leading down to a lawn with a well-stocked border, a rockery with a pond, a productive vegetable garden, a greenhouse, a shed and far reaching countryside views.





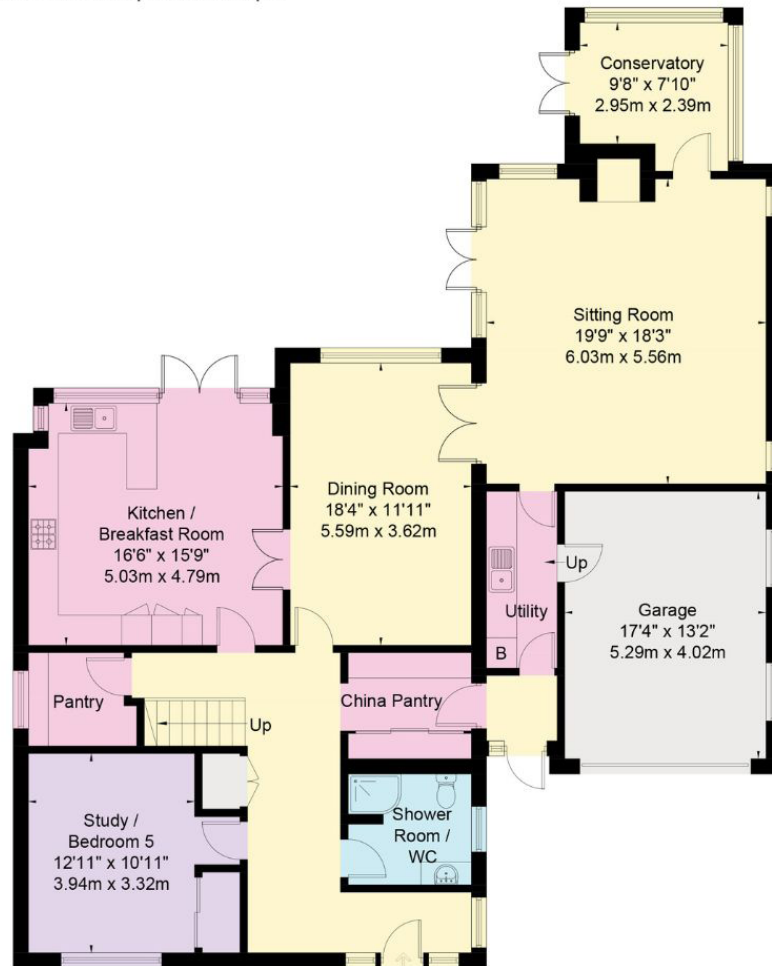


Merryways, Main Road, Owslebury Winchester, SO21 1LP

Approximate Floor Area = 2937 sq ft / 272.9 sq m

Garage = 229 sq ft / 21.3 sq m

Total = 3166 sq ft / 294.2 sq m



Ground Floor



First Floor

This plan is for layout guidance only. Not drawn to scale unless stated. Windows and door openings are approximate. Whilst every care is taken in the preparation of this plan, please check all dimensions, shapes and compass bearings before making any decisions reliant upon them. (ID767266)

We would be delighted
to tell you more.

Lottie Lambert
01962 677246
lottie.lambert@knightfrank.com

Knight Frank Winchester
15 Jewry Street, Winchester
SO23 8RZ

Jon Lacey
01962 677242
jonathan.lacey@knightfrank.com

knightfrank.co.uk

Your partners in property

1. Particulars: These particulars are not an offer or contract, nor part of one. You should not rely on statements given by Knight Frank in the particulars, by word of mouth or in writing ("information") as being factually accurate about the property, its condition or its value. Neither Knight Frank nor any joint agent has any authority to make any representations about the property, and accordingly any information given is entirely without responsibility on the part of Knight Frank. 2. Material Information: Please note that the material information is provided to Knight Frank by third parties and is provided here as a guide only. While Knight Frank has taken steps to verify this information, we advise you to confirm the details of any such material information prior to any offer being submitted. If we are informed of changes to this information by the seller or another third party, we will use reasonable endeavours to update this as soon as practical. 3. Photos, Videos etc: The photographs, property videos and virtual viewings etc. show only certain parts of the property as they appeared at the time they were taken. Areas, measurements and distances given are approximate only. 4. Regulations etc: Any reference to alterations to, or use of, any part of the property does not mean that any necessary planning, building regulations or other consent has been obtained. A buyer must find out by inspection or in other ways that these matters have been properly dealt with and that all information is correct. 5. Fixtures and fittings: A list of the fitted carpets, curtains, light fittings and other items fixed to the property which are included in the sale (or may be available by separate negotiation) will be provided by the Seller's Solicitors. 6. VAT: The VAT position relating to the property may change without notice. 7. To find out how we process Personal Data, please refer to our Group Privacy Statement and other notices at <https://www.knightfrank.com/legals/privacy-statement>.

Particulars dated Jan 2026. Photographs and videos dated April 2025. All information is correct at the time of going to print. Knight Frank is the trading name of Knight Frank LLP. Knight Frank LLP is a limited liability partnership registered in England and Wales with registered number OC305934. Our registered office is at 55 Baker Street, London W1U 8AN. We use the term 'partner' to refer to a member of Knight Frank LLP, or an employee or consultant. A list of members names of Knight Frank LLP may be inspected at our registered office. If you do not want us to contact you further about our services then please contact us by either calling 020 3544 0692, email to marketing.help@knightfrank.com or post to our UK Residential Marketing Manager at our registered office (above) providing your name and address.