



BURNTWOOD, MOUNT HERMON ROAD

Palestine, Hampshire



PALESTINE, HAMPSHIRE

A beautiful family home located in the tranquil, rural setting of Palestine, within close proximity to the popular town of Andover.



5



3



3

EPC

C

Local Authority: Test Valley Borough Council

Council Tax band: G

Tenure: Freehold

Guide Price: £1,500,000



On the ground floor there are 3 spacious reception rooms with the heart of the home being an impressive family room. This area has an open-plan layout, enhanced by sliding glass doors, that flood the space with natural light and offer access to a charming patio and lush garden beyond. The kitchen/dining room features a wooden island, sleek dark cabinetry and warm wooden countertops. Pendant lights add a contemporary touch, whilst large windows also bring in an abundance of light, creating an inviting atmosphere. Adjacent to the kitchen is a utility room and a study. The first-floor consists of five spacious bedrooms (two en suite) and a family bathroom with a shower and a bath. The spacious principal bedroom features vaulted ceilings and light wood flooring, creating a warm environment. A feature window is the striking, focal point of the bedroom, and provides wonderful views. There is a contemporary en suite bathroom, and an walk in wardrobe. The additional four bedrooms are evenly sized with wooden flooring throughout. The well-kept garden offers a perfect blend of relaxation and recreation. Featuring a well-maintained lawn, with plenty of space for outdoor activities. The charming patio area is perfect for alfresco dining. The backdrop provides picturesque countryside views over the hedgerows. Approached via electric gates is a spacious gravel driveway leading to a double garage and a lawn with a tall hedge for privacy.







Burntwood

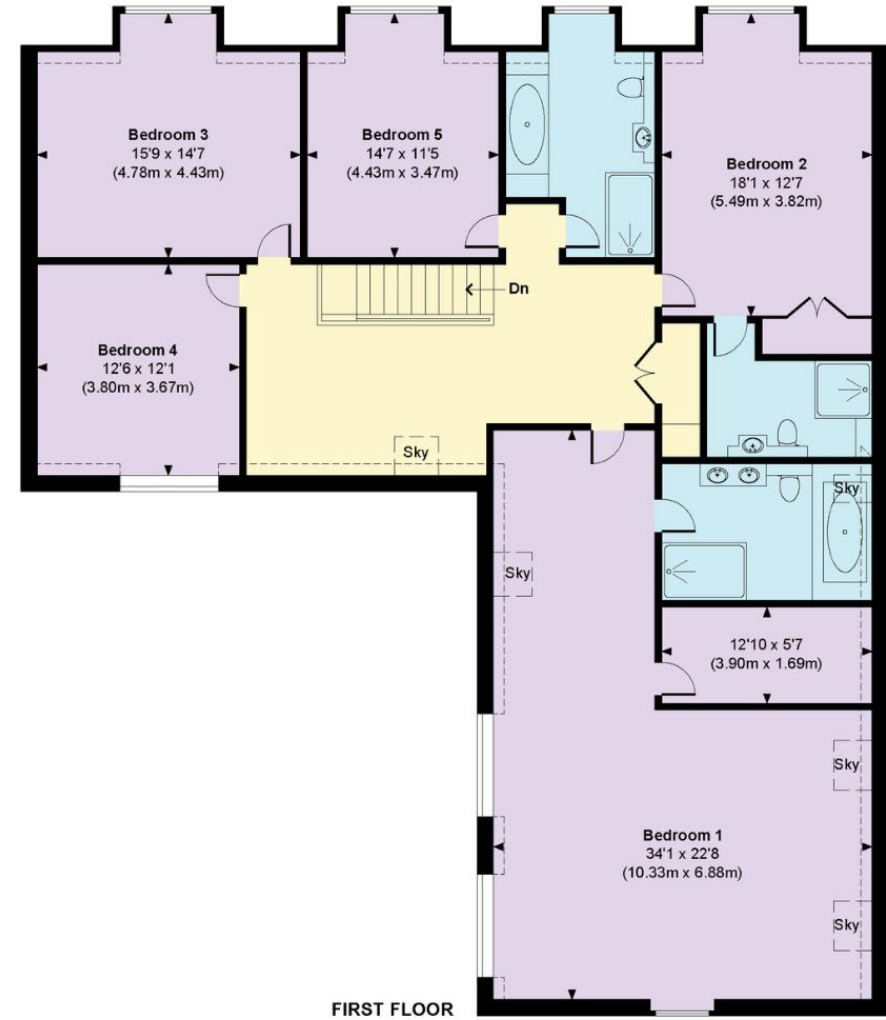
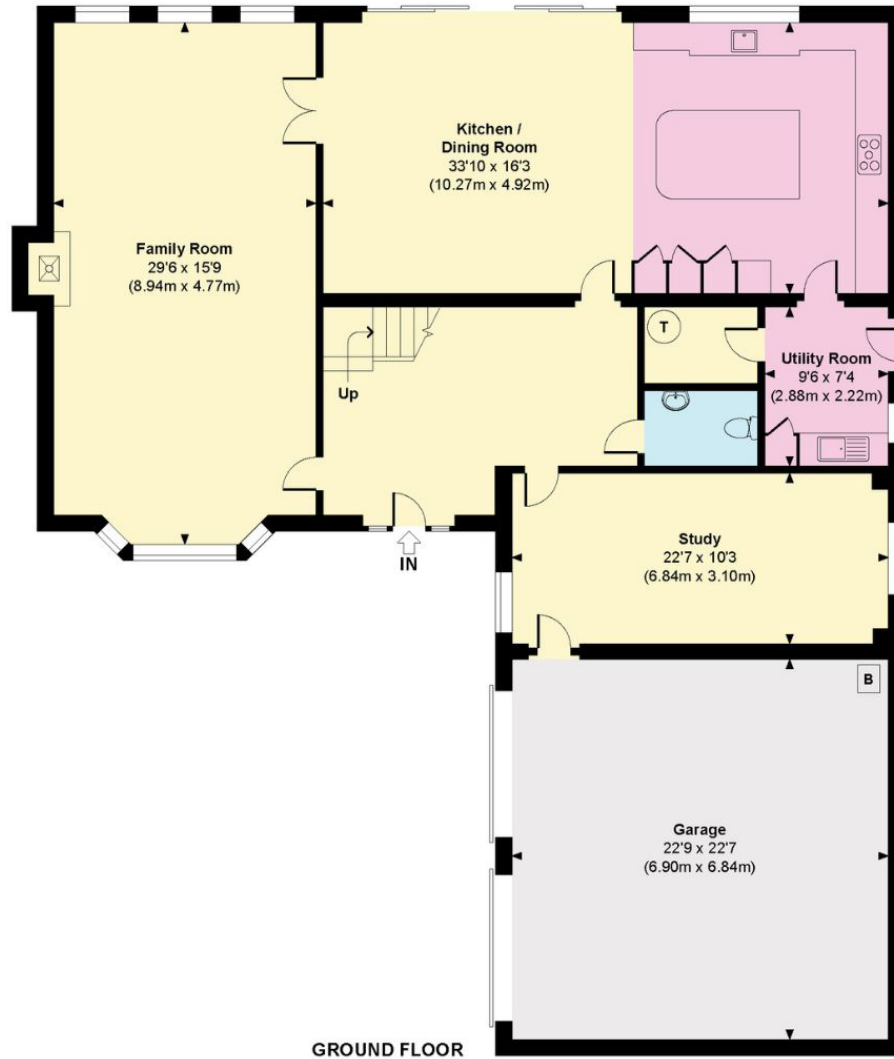
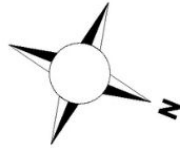
Approximate Gross Internal Area

Main House = 3698 Sq Ft / 343.57 Sq M

Garage = 508 Sq Ft / 47.20 Sq M

Total = 4206 Sq Ft / 390.77 Sq M

Includes areas with restricted room height.



Approximate Gross Internal Area = 4206 sq m / 390.77 sq ft

This plan is for layout guidance only. Not drawn to scale unless stated. Windows and door openings are approximate. Whilst every care is taken in the preparation of this plan, please check all dimensions, shapes and compass bearings before making any decisions reliant upon them. (ID767266)

We would be delighted
to tell you more.

Ed Hunt
01962 677236
edward.hunt@knightfrank.com

Knight Frank Winchester
14 Jewry Street
SO23 8RZ

Lottie Lambert
01962 677246
lottie.lambert@knightfrank.com

knightfrank.co.uk

Your partners in property

1. Particulars: These particulars are not an offer or contract, nor part of one. You should not rely on statements given by Knight Frank in the particulars, by word of mouth or in writing ("information") as being factually accurate about the property, its condition or its value. Neither Knight Frank nor any joint agent has any authority to make any representations about the property, and accordingly any information given is entirely without responsibility on the part of Knight Frank. 2. Material Information: Please note that the material information is provided to Knight Frank by third parties and is provided here as a guide only. While Knight Frank has taken steps to verify this information, we advise you to confirm the details of any such material information prior to any offer being submitted. If we are informed of changes to this information by the seller or another third party, we will use reasonable endeavours to update this as soon as practical. 3. Photos, Videos etc: The photographs, property videos and virtual viewings etc. show only certain parts of the property as they appeared at the time they were taken. Areas, measurements and distances given are approximate only. 4. Regulations etc: Any reference to alterations to, or use of, any part of the property does not mean that any necessary planning, building regulations or other consent has been obtained. A buyer must find out by inspection or in other ways that these matters have been properly dealt with and that all information is correct. 5. Fixtures and fittings: A list of the fitted carpets, curtains, light fittings and other items fixed to the property which are included in the sale (or may be available by separate negotiation) will be provided by the Seller's Solicitors. 6. VAT: The VAT position relating to the property may change without notice. 7. To find out how we process Personal Data, please refer to our Group Privacy Statement and other notices at <https://www.knightfrank.com/legals/privacy-statement>.

Particulars dated August 2025. Photographs dated July 2025. All information is correct at the time of going to print. Knight Frank is the trading name of Knight Frank LLP. Knight Frank LLP is a limited liability partnership registered in England and Wales with registered number OC305934. Our registered office is at 55 Baker Street, London W1U 8AN. We use the term 'partner' to refer to a member of Knight Frank LLP, or an employee or consultant. A list of members names of Knight Frank LLP may be inspected at our registered office. If you do not want us to contact you further about our services then please contact us by either calling 020 3544 0692, email to marketing.help@knightfrank.com or post to our UK Residential Marketing Manager at our registered office (above) providing your name and address.