



## THE OLD GRANGE, LONGSTOCK

Stockbridge, Hampshire



# LONGSTOCK, STOCKBRIDGE

A Grade II listed family home, situated in the picturesque Test Valley village of Longstock.



5



2



2

EPC

E

Local Authority: Test Valley Borough Council

Council Tax band: G

Tenure: Freehold

**Guide price: £1,295,000**



The ground floor consists of two reception rooms and a contemporary, shaker-style kitchen/dining room, accompanied by an AGA and leads into a larder. The spacious Sitting room features a log burner and a beautiful bay window overlooking the garden, a further dual aspect reception room currently being used as a play room but could alternatively be used. Additionally, there is a downstairs cloakroom and an upper ground floor consisting of a utility room with garden access and a storage room. The first floor contains a generously sized dual-aspect double bedroom, a further two bedrooms, one with built-in wardrobes and a family bathroom. The second floor has two large double bedrooms and a well-appointed family bathroom; additionally, having a separate WC. Each bedroom is oriented to capture the stunning garden views.

The garden surrounds all three sides of the house, whilst running all the way down to the River Test and the water meadows. The land is complemented by a variety of mature shrubs, trees, an orchard, laid to lawn and a versatile area within the garden that can be utilised as a workshop, store or potting shed. There are also ample parking facilities.







# The Old Grange

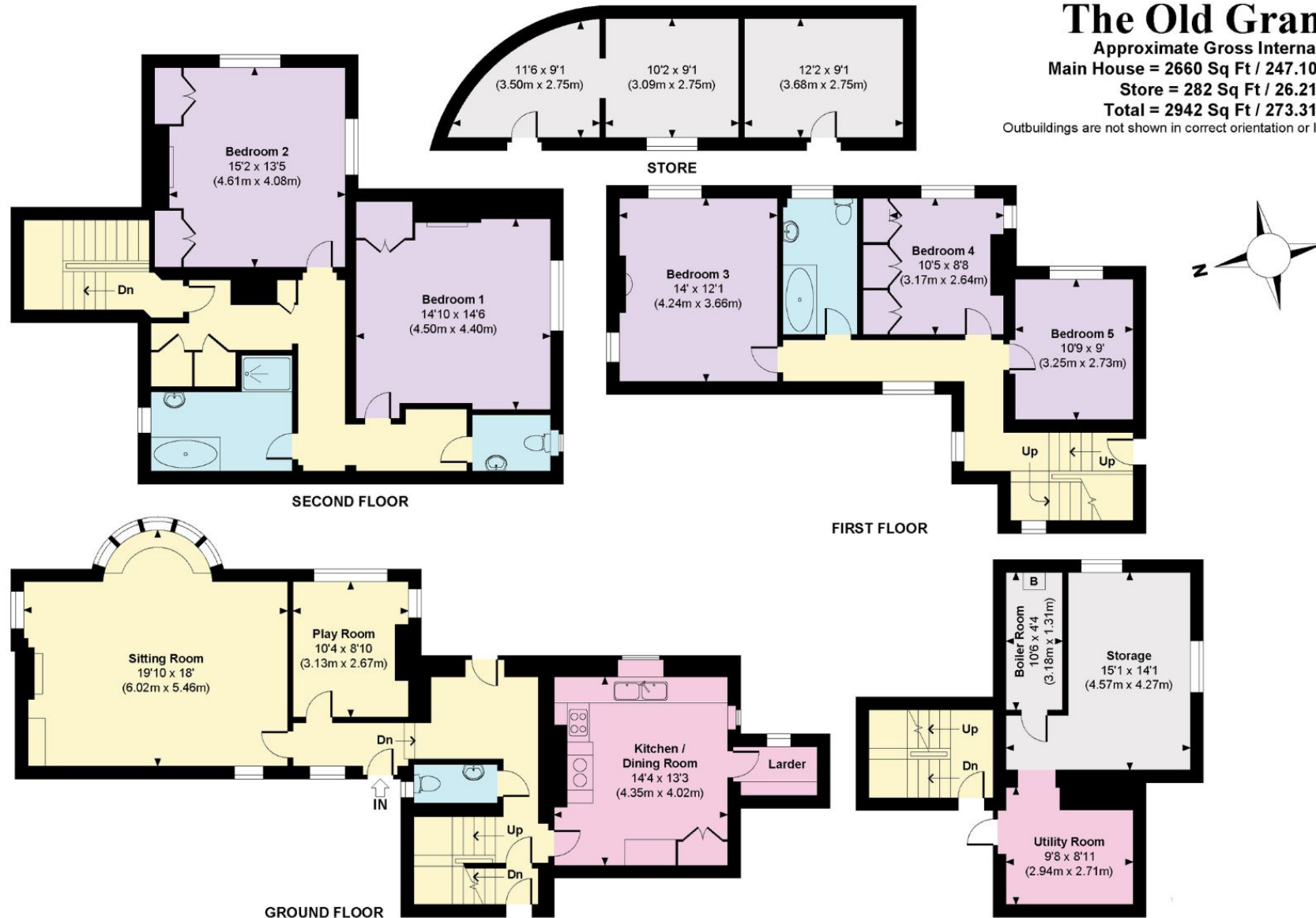
Approximate Gross Internal Area

Main House = 2660 Sq Ft / 247.10 Sq M

Store = 282 Sq Ft / 26.21 Sq M

Total = 2942 Sq Ft / 273.31 Sq M

Outbuildings are not shown in correct orientation or location.



Approximate Gross Internal Area = 247.12 - 273.32 sq m / 2,660 - 2,942 sq ft

This plan is for layout guidance only. Not drawn to scale unless stated. Windows and door openings are approximate. Whilst every care is taken in the preparation of this plan, please check all dimensions, shapes and compass bearings before making any decisions reliant upon them. (ID767266)

We would be delighted  
to tell you more.

Ed Hunt  
01962 677236  
edward.hunt@knightfrank.com

**Knight Frank Winchester**  
14 Jewry Street, Winchester  
SO23 8RZ

Lottie Lambert  
01962 677246  
lottie.lambert@knightfrank.com

[knightfrank.co.uk](https://knightfrank.co.uk)

Your partners in property

1. Particulars: These particulars are not an offer or contract, nor part of one. You should not rely on statements given by Knight Frank in the particulars, by word of mouth or in writing ("information") as being factually accurate about the property, its condition or its value. Neither Knight Frank nor any joint agent has any authority to make any representations about the property, and accordingly any information given is entirely without responsibility on the part of Knight Frank. 2. Material Information: Please note that the material information is provided to Knight Frank by third parties and is provided here as a guide only. While Knight Frank has taken steps to verify this information, we advise you to confirm the details of any such material information prior to any offer being submitted. If we are informed of changes to this information by the seller or another third party, we will use reasonable endeavours to update this as soon as practical. 3. Photos, Videos etc: The photographs, property videos and virtual viewings etc. show only certain parts of the property as they appeared at the time they were taken. Areas, measurements and distances given are approximate only. 4. Regulations etc: Any reference to alterations to, or use of, any part of the property does not mean that any necessary planning, building regulations or other consent has been obtained. A buyer must find out by inspection or in other ways that these matters have been properly dealt with and that all information is correct. 5. Fixtures and fittings: A list of the fitted carpets, curtains, light fittings and other items fixed to the property which are included in the sale (or may be available by separate negotiation) will be provided by the Seller's Solicitors. 6. VAT: The VAT position relating to the property may change without notice. 7. To find out how we process Personal Data, please refer to our Group Privacy Statement and other notices at <https://www.knightfrank.com/legals/privacy-statement>.

Particulars dated July 2025. Photographs and videos dated July 2025. All information is correct at the time of going to print. Knight Frank is the trading name of Knight Frank LLP. Knight Frank LLP is a limited liability partnership registered in England and Wales with registered number OC305934. Our registered office is at 55 Baker Street, London W1U 8AN. We use the term 'partner' to refer to a member of Knight Frank LLP or an employee or consultant. A list of members names of Knight Frank LLP may be inspected at our registered office. If you do not want us to contact you further about our services then please contact us by either calling 020 3544 0692, email to [marketing.help@knightfrank.com](mailto:marketing.help@knightfrank.com) or post to our UK Residential Marketing Manager at our registered office (above) providing your name and address.