



## BROADVIEW, WEST MEON

Hampshire



# BROADVIEW, WEST MEON

A detached family home located in the Hampshire village of West Meon with picturesque countryside views.



4



2



5

EPC

E

Local Authority: Winchester City Council

Council Tax band: E

Tenure: Freehold

Guide price: £1,395,000



Upon entering the property, you are welcomed into a spacious dining hall with doors leading to four further reception rooms, including a study and separate garden room, a large drawing room, and an additional sitting room. A kitchen/breakfast room is located at the rear of the property. The remaining part of the ground floor is made up of a cloakroom, a utility room and plenty of storage facilities. The first floor of the property features a principal bedroom with en suite bathroom, a further three bedrooms all with built-in wardrobes and a family shower room. The property is approached up a private driveway with ample parking and a front garden. The property has a separate double garage and workshop located at the back. The rear garden is mainly laid to lawn with mature bushes and trees bordering to create privacy. A garden terrace runs the length of the house, and Paddocks with a field shelter are located at the bottom of the garden. The property is set within 3.3 acres.







# Broadview

Approximate Gross Internal Area

Main House = 2299 Sq Ft / 213.53 Sq M

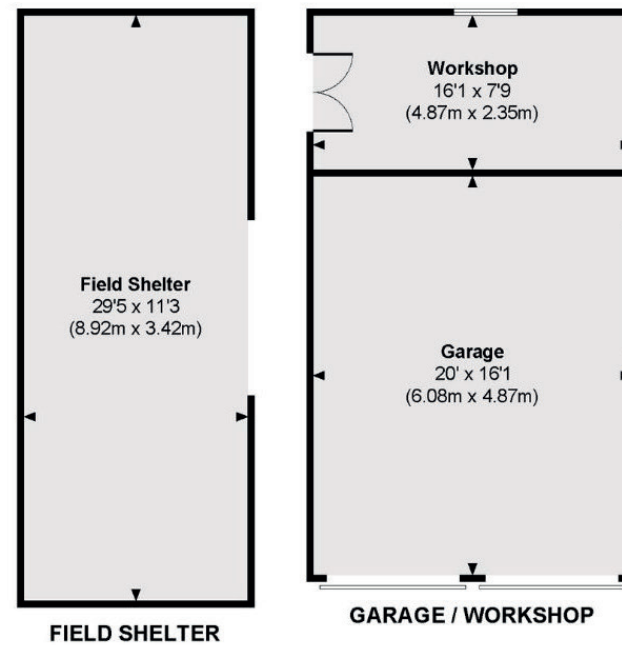
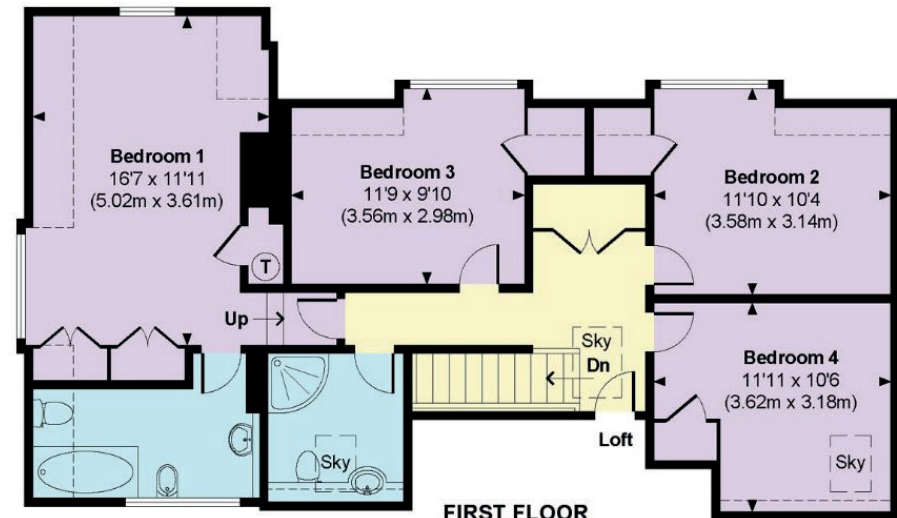
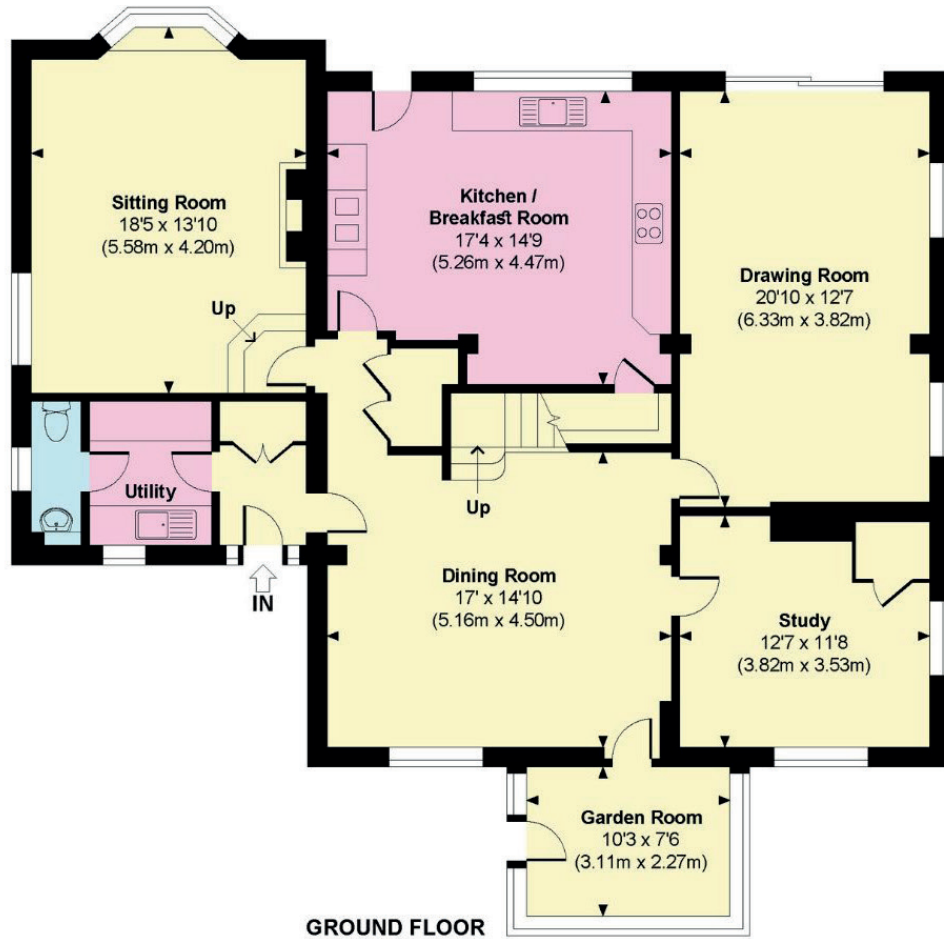
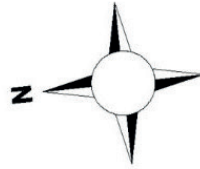
Garage / Workshop = 447 Sq Ft / 41.54 Sq M

Field Shelter = 328 Sq Ft / 30.51 Sq M

Total = 3074 Sq Ft / 285.58 Sq M

Outbuildings are not shown in correct orientation or location.

Includes areas with restricted room height.



Approximate Gross Internal Area = 3074 SQ Ft / 285.58 Sq M

This plan is for layout guidance only. Not drawn to scale unless stated. Windows and door openings are approximate. Whilst every care is taken in the preparation of this plan, please check all dimensions, shapes and compass bearings before making any decisions reliant upon them. (ID767266)

We would be delighted  
to tell you more.

**Lottie Lambert**  
0196267 7246  
lottie.lambert@knightfrank.com

**Ed Hunt**  
0196267 7236  
edward.hunt@knightfrank.com

**Knight Frank Winchester**  
14 Jewry Street, Winchester  
SO23 8RZ

**knightfrank.co.uk**

**Your partners in property**

1. Particulars: These particulars are not an offer or contract, nor part of one. You should not rely on statements given by Knight Frank in the particulars, by word of mouth or in writing ("information") as being factually accurate about the property, its condition or its value. Neither Knight Frank nor any joint agent has any authority to make any representations about the property, and accordingly any information given is entirely without responsibility on the part of Knight Frank. 2. Material Information: Please note that the material information is provided to Knight Frank by third parties and is provided here as a guide only. While Knight Frank has taken steps to verify this information, we advise you to confirm the details of any such material information prior to any offer being submitted. If we are informed of changes to this information by the seller or another third party, we will use reasonable endeavours to update this as soon as practical. 3. Photos, Videos etc: The photographs, property videos and virtual viewings etc. show only certain parts of the property as they appeared at the time they were taken. Areas, measurements and distances given are approximate only. 4. Regulations etc: Any reference to alterations to, or use of, any part of the property does not mean that any necessary planning, building regulations or other consent has been obtained. A buyer must find out by inspection or in other ways that these matters have been properly dealt with and that all information is correct. 5. Fixtures and fittings: A list of the fitted carpets, curtains, light fittings and other items fixed to the property which are included in the sale (or may be available by separate negotiation) will be provided by the Seller's Solicitors. 6. VAT: The VAT position relating to the property may change without notice. 7. To find out how we process Personal Data, please refer to our Group Privacy Statement and other notices at <https://www.knightfrank.com/legals/privacy-statement>.

Particulars dated May 2025. Photographs and videos dated May 2025. All information is correct at the time of going to print. Knight Frank is the trading name of Knight Frank LLP. Knight Frank LLP is a limited liability partnership registered in England and Wales with registered number OC305934. Our registered office is at 55 Baker Street, London W1U 8AN. We use the term 'partner' to refer to a member of Knight Frank LLP, or an employee or consultant. A list of members names of Knight Frank LLP may be inspected at our registered office. If you do not want us to contact you further about our services then please contact us by either calling 020 3544 0692, email to [marketing.help@knightfrank.com](mailto:marketing.help@knightfrank.com) or post to our UK Residential Marketing Manager at our registered office (above) providing your name and address.