



GRANARY COTTAGE, QUEEN STREET, TWYFORD

Winchester, Hampshire



QUEEN STREET, TWYFORD

Granary Cottage is a charming Grade II Listed cottage, located in the village of Twyford, approximately three miles south of Winchester.



6



3



3

EPC

E

Local Authority: Winchester City Council

Council Tax band: G

Tenure: Freehold

Guide price: £1,350,000



A CHARMING GEORGIAN FACADE WITH BLOOMING PURPLE WISTERIA, A CENTRAL FRONT DOOR, AND FIVE SASH WINDOWS OVERLOOKING THE POPULAR TWYFORD, QUEEN STREET.

Entering the property, doors lead into two of the reception rooms. To the left, you are welcomed into an informal reception room and to the right, you are welcomed into a drawing room. Both reception rooms give access to the farmhouse-style kitchen and stairs to a cellar. The kitchen flows into the conservatory. A door through the conservatory leads into a wing of the house including a cloakroom, a utility room and a double bedroom/office. A staircase leads to the first floor, including two bedrooms and a family shower room. The main staircase of the property is located in the entrance hall, gaining access to the principal bedroom, with an en suite shower room, two bedrooms and a family bathroom. The garden is located at the rear of the house, which comprises lawned, bedding and planting areas and a covered seating and patio area. The property features a store room and a separate double garage, which could accommodate parking and a parking space located outside the double garage.







Granary Cottage

Approximate Gross Internal Area

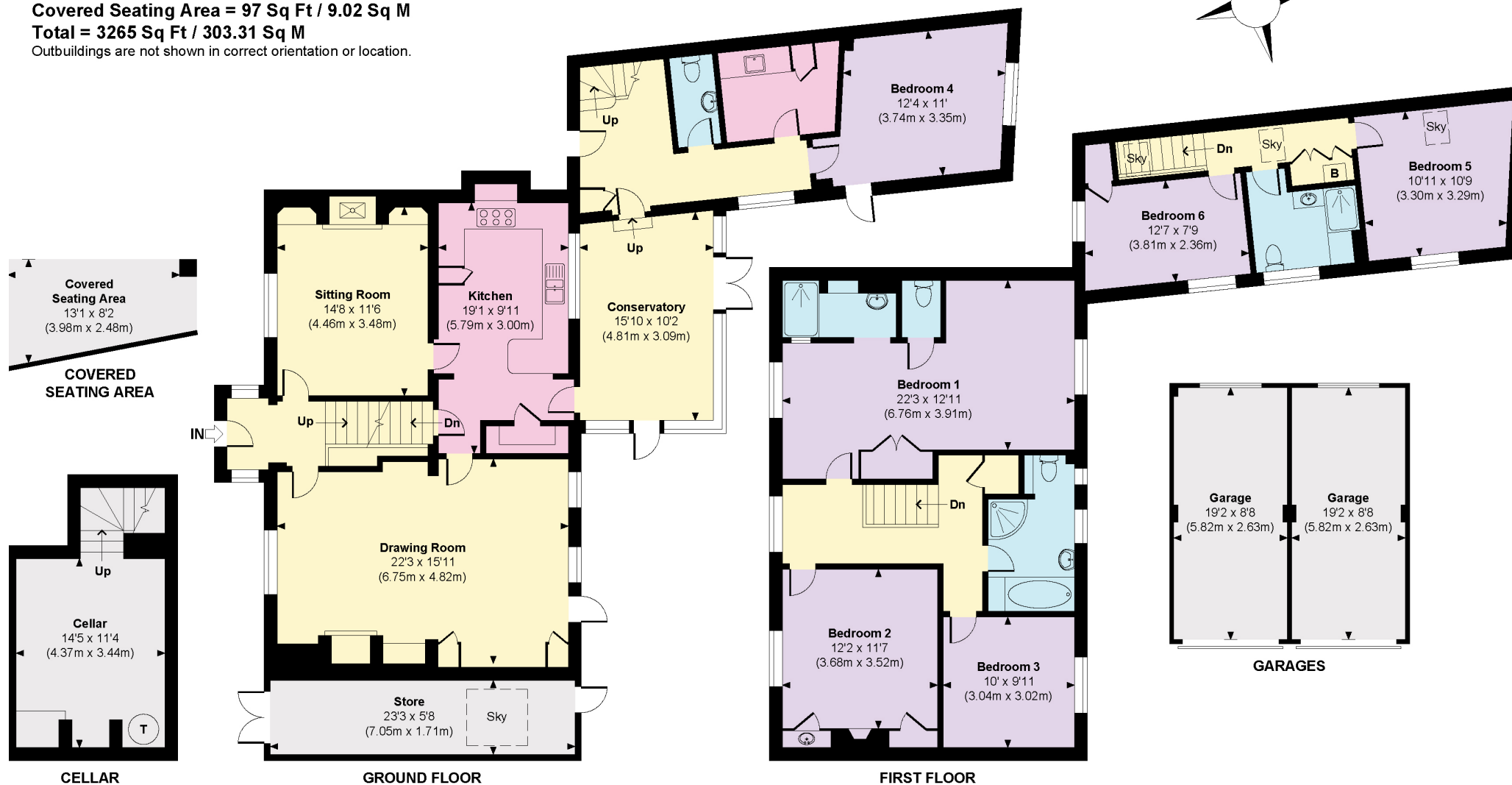
Main House = 2831 Sq Ft / 263.09 Sq M

Garages = 336 Sq Ft / 31.20 Sq M

Covered Seating Area = 97 Sq Ft / 9.02 Sq M

Total = 3265 Sq Ft / 303.31 Sq M

Outbuildings are not shown in correct orientation or location.



(Including Basement / Loft Room)

Approximate Gross Internal Area = 263.01 - 303.33 sq m / 2,831 - 3,265 sq ft

This plan is for layout guidance only. Not drawn to scale unless stated. Windows and door openings are approximate. Whilst every care is taken in the preparation of this plan, please check all dimensions, shapes and compass bearings before making any decisions reliant upon them. (ID767266)

We would be delighted
to tell you more.

Ed Hunt
019627 7236
edward.hunt@knightfrank.com

Lottie Lambert
0196267 7246
lottie.lambert@knightfrank.com

Knight Frank Winchester
14 Jewry Street, Winchester
SO23 8RZ

knightfrank.co.uk

Your partners in property

1. Particulars: These particulars are not an offer or contract, nor part of one. You should not rely on statements given by Knight Frank in the particulars, by word of mouth or in writing ("information") as being factually accurate about the property, its condition or its value. Neither Knight Frank nor any joint agent has any authority to make any representations about the property, and accordingly any information given is entirely without responsibility on the part of Knight Frank. 2. Material Information: Please note that the material information is provided to Knight Frank by third parties and is provided here as a guide only. While Knight Frank has taken steps to verify this information, we advise you to confirm the details of any such material information prior to any offer being submitted. If we are informed of changes to this information by the seller or another third party, we will use reasonable endeavours to update this as soon as practical. 3. Photos, Videos etc: The photographs, property videos and virtual viewings etc. show only certain parts of the property as they appeared at the time they were taken. Areas, measurements and distances given are approximate only. 4. Regulations etc: Any reference to alterations to, or use of, any part of the property does not mean that any necessary planning, building regulations or other consent has been obtained. A buyer must find out by inspection or in other ways that these matters have been properly dealt with and that all information is correct. 5. Fixtures and fittings: A list of the fitted carpets, curtains, light fittings and other items fixed to the property which are included in the sale (or may be available by separate negotiation) will be provided by the Seller's Solicitors. 6. VAT: The VAT position relating to the property may change without notice. 7. To find out how we process Personal Data, please refer to our Group Privacy Statement and other notices at <https://www.knightfrank.com/legals/privacy-statement>.

Particulars dated May 2025. Photographs and videos dated May 2025. All information is correct at the time of going to print. Knight Frank is the trading name of Knight Frank LLP. Knight Frank LLP is a limited liability partnership registered in England and Wales with registered number OC305934. Our registered office is at 55 Baker Street, London W1U 8AN. We use the term 'partner' to refer to a member of Knight Frank LLP, or an employee or consultant. A list of members names of Knight Frank LLP may be inspected at our registered office. If you do not want us to contact you further about our services then please contact us by either calling 020 3544 0692, email to marketing.help@knightfrank.com or post to our UK Residential Marketing Manager at our registered office (above) providing your name and address.