



## KINGFIELD HOUSE, OVER WALLOP

Stockbridge, Hampshire





# OVER WALLOP, STOCKBRIDGE

Kingfield House is a recently renovated, detached family home in the popular Test Valley Village of Over Wallop.



5



4



6

EPC

D

Local Authority: Test Valley Borough Council

Council Tax band: G

Tenure: Freehold

**Guide price: £1,150,000**



Entering the property, you are welcomed into an entrance hall with a boot room leading to an impressive, open-plan kitchen, dining and sitting room renovated by the current owners to a high standard with French doors to the garden. Additionally, a spacious sitting room features a timber vaulted ceiling, bespoke bookshelves and a wood-burning stove. The sitting room leads to a large office with access to the rear hallway, downstairs bedroom and en suite bathroom. The property also features a snug, currently used as a playroom, a utility room, pantry, a gym and a second office with floor-to-ceiling windows out to the garden. The property's first floor features four double bedrooms, two with en suites and a family bathroom. To the front of the property is a large gravel driveway with plenty of parking and a recently constructed timber garage/workshop. To the rear of the house is a generous garden mostly laid to lawn, with a modern patio. To the North of the garden is the picturesque Over Wallop countryside.











# Kingfield House

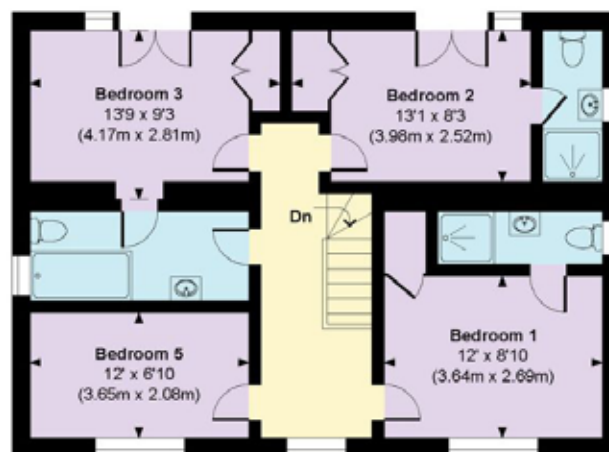
Approximate Gross Internal Area

Main House = 2882 Sq Ft / 267.74 Sq M

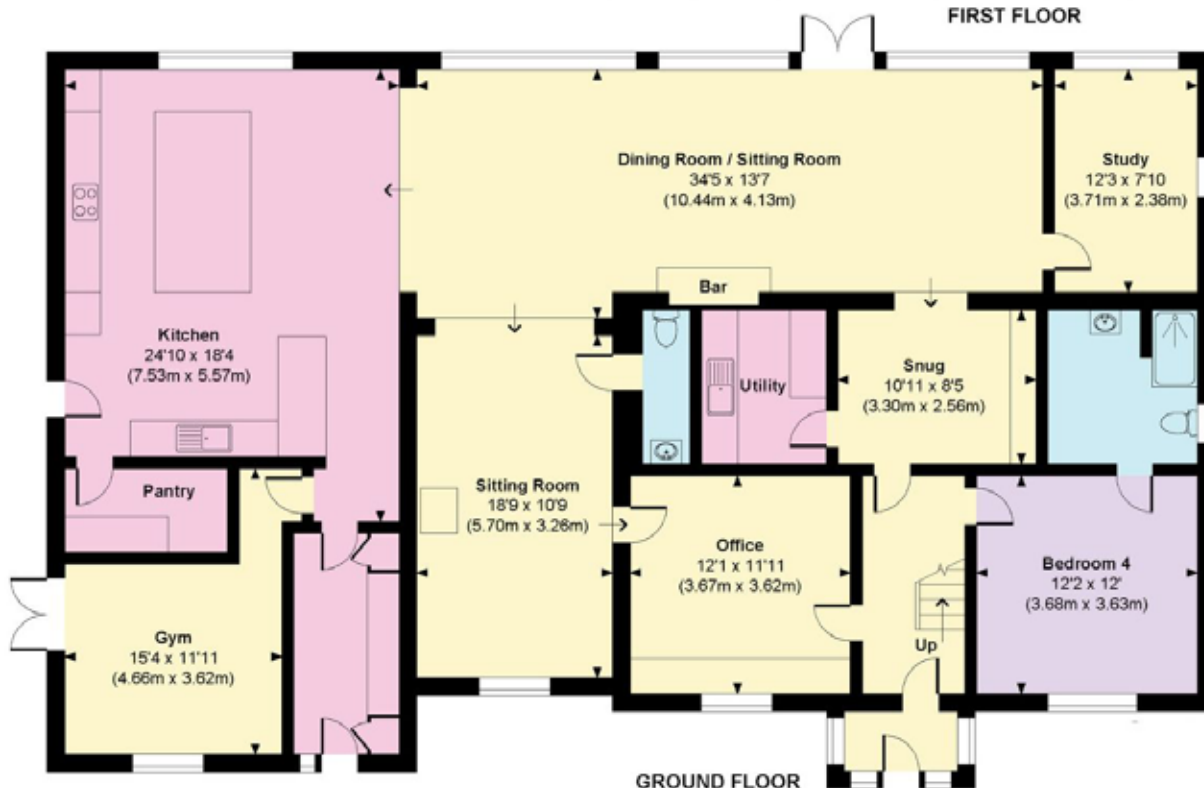
Garage = 258 Sq Ft / 23.96 Sq M

Total = 3140 Sq Ft / 291.70 Sq M

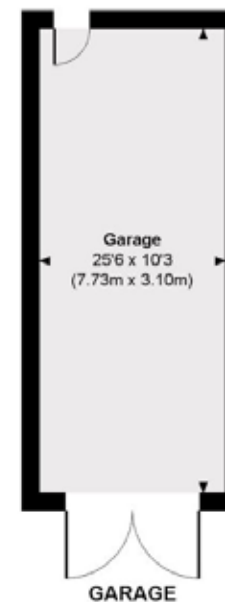
Outbuildings are not shown in correct orientation or location.  
Includes areas with restricted room height.



FIRST FLOOR



GROUND FLOOR



Approximate Gross Internal Area = 3140 Sp Ft / 291.70 Sq M

This plan is for layout guidance only. Not drawn to scale unless stated. Windows and door openings are approximate. Whilst every care is taken in the preparation of this plan, please check all dimensions, shapes and compass bearings before making any decisions reliant upon them. (ID767266)

We would be delighted  
to tell you more.

**Ed Hunt**

+44 1962 677 236

edward.hunt@knightfrank.com

**Knight Frank Winchester**

14 Jewry Street, Winchester

SO23 8RZ

**Lottie Lambert**

+44 196 267 7246

lottie.lambert@knightfrank.com

**knightfrank.co.uk**

Your partners in property

1. Particulars: These particulars are not an offer or contract, nor part of one. You should not rely on statements given by Knight Frank in the particulars, by word of mouth or in writing ("information") as being factually accurate about the property, its condition or its value. Neither Knight Frank nor any joint agent has any authority to make any representations about the property, and accordingly any information given is entirely without responsibility on the part of Knight Frank. 2. Material Information: Please note that the material information is provided to Knight Frank by third parties and is provided here as a guide only. While Knight Frank has taken steps to verify this information, we advise you to confirm the details of any such material information prior to any offer being submitted. If we are informed of changes to this information by the seller or another third party, we will use reasonable endeavours to update this as soon as practical. 3. Photos, Videos etc: The photographs, property videos and virtual viewings etc. show only certain parts of the property as they appeared at the time they were taken. Areas, measurements and distances given are approximate only. 4. Regulations etc: Any reference to alterations to, or use of, any part of the property does not mean that any necessary planning, building regulations or other consent has been obtained. A buyer must find out by inspection or in other ways that these matters have been properly dealt with and that all information is correct. 5. Fixtures and fittings: A list of the fitted carpets, curtains, light fittings and other items fixed to the property which are included in the sale (or may be available by separate negotiation) will be provided by the Seller's Solicitors. 6. VAT: The VAT position relating to the property may change without notice. 7. To find out how we process Personal Data, please refer to our Group Privacy Statement and other notices at <https://www.knightfrank.com/legals/privacy-statement>.

Particulars dated April 2025. Photographs and videos dated April 2025. All information is correct at the time of going to print. Knight Frank is the trading name of Knight Frank LLP. Knight Frank LLP is a limited liability partnership registered in England and Wales with registered number OC305934. Our registered office is at 55 Baker Street, London W1U 8AN. We use the term 'partner' to refer to a member of Knight Frank LLP, or an employee or consultant. A list of members names of Knight Frank LLP may be inspected at our registered office. If you do not want us to contact you further about our services then please contact us by either calling 020 3544 0692, email to [marketing.help@knightfrank.com](mailto:marketing.help@knightfrank.com) or post to our UK Residential Marketing Manager at our registered office (above) providing your name and address.