



THE BARN, OLD HOME FARM BARNS

High Street, Grateley



THE BARN OLD HOME FARM BARNS

A superb 4 bedroom detached home situated in south-facing gardens of approximately 1/4 of an acre in the heart of Grateley village which offers a local store, school and train services to London nearby.



4



2



4

EPC

C

Local Authority: Test Valley Borough Council

Council Tax band: G

Tenure: Freehold

Guide Price: £1,000,000



THE BARN OLD HOME FARM BARNS

The Barn forms part of an exclusive development set back from the lane around a quadrangle of similar properties. With a south-facing garden, the house has about 3285 sq ft of accommodation with double garage. A welcoming part vaulted dual aspect reception hall has floor to ceiling glazing to the front and double doors to the garden at the rear. On the east side are three double bedrooms, family bathroom and cloakroom whilst the west side has a cosy family room, kitchen/breakfast room, utility and study/bedroom five. On the first floor is the stunning main drawing room of over 40ft which has a vaulted ceiling and exposed oak timbers. There is a large principal bedroom with an en suite bathroom with Jacuzzi bath. The gardens are mainly laid to lawn with a terrace immediately to the rear of the house, and mature trees and shrubs along the borders for privacy.







The Barn

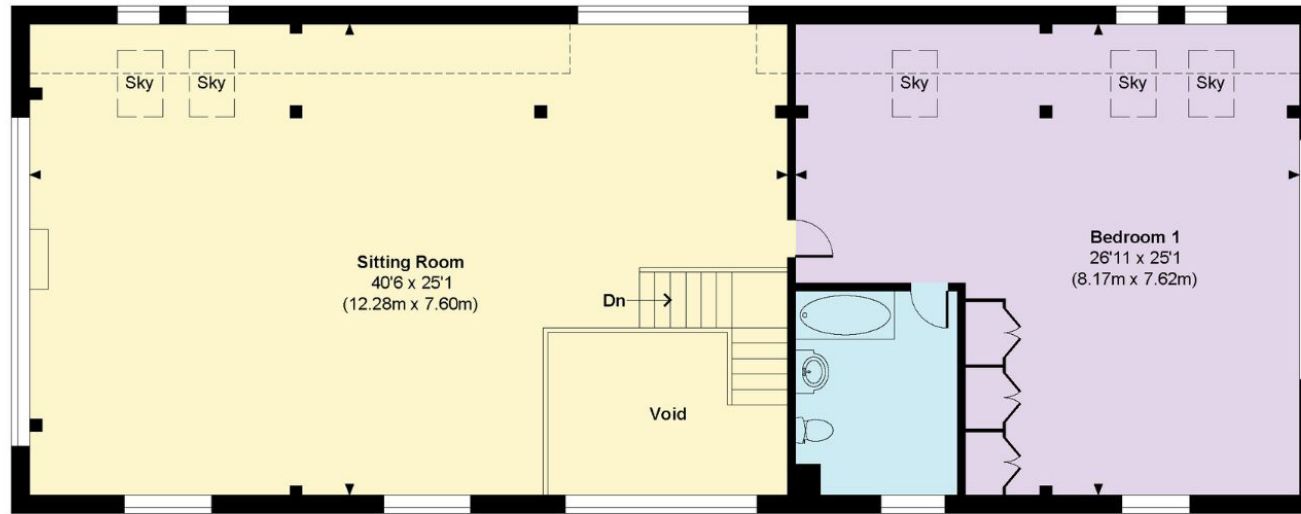
Approximate Gross Internal Area

Main House = 3285 Sq Ft / 305.15 Sq M

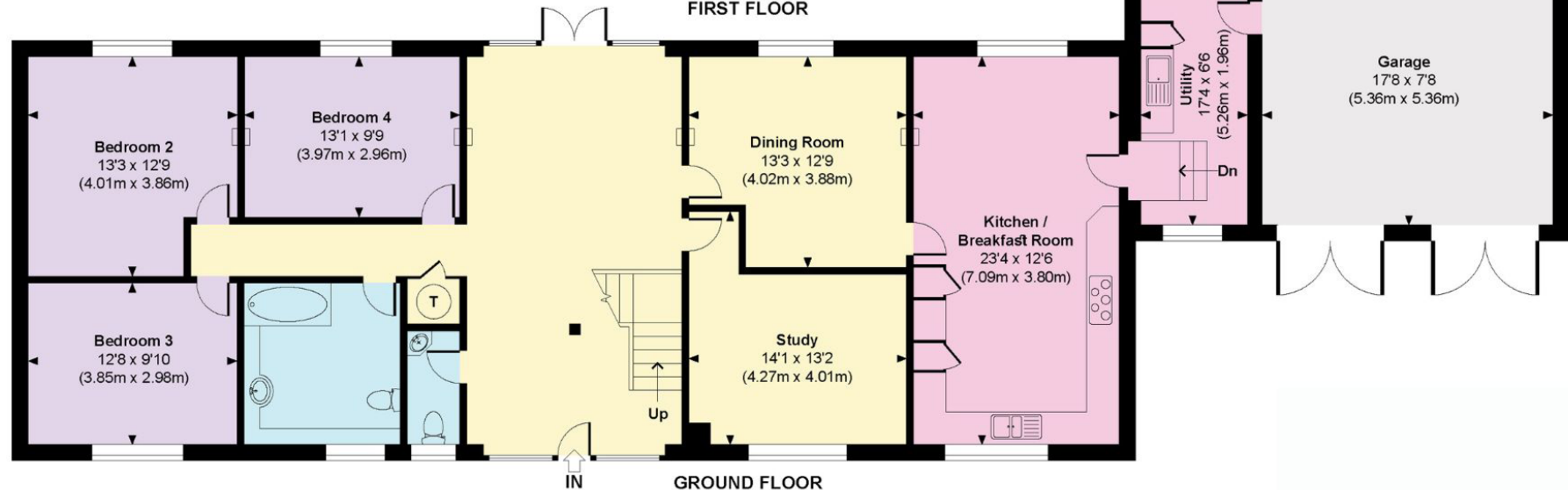
Garage = 309 Sq Ft / 28.73 Sq M

Total = 3594 Sq Ft / 333.88 Sq M

Includes areas with restricted room height but excludes void.



FIRST FLOOR



GROUND FLOOR



This plan is for layout guidance only. Not drawn to scale unless stated. Windows and door openings are approximate. Whilst every care is taken in the preparation of this plan, please check all dimensions, shapes and compass bearings before making any decisions reliant upon them. (ID767266)

We would be delighted
to tell you more.

Ed Hunt
01962 677236
edward.hunt@knightfrank.com

Knight Frank Winchester
14-15 Jewry Street, Winchester
SO23 8RZ

Lottie Lambert
01962 677246
lottie.lambert@knightfrank.com

[knightfrank.co.uk](https://www.knightfrank.co.uk)

Your partners in property

1. Particulars: These particulars are not an offer or contract, nor part of one. You should not rely on statements given by Knight Frank in the particulars, by word of mouth or in writing ("information") as being factually accurate about the property, its condition or its value. Neither Knight Frank nor any joint agent has any authority to make any representations about the property, and accordingly any information given is entirely without responsibility on the part of Knight Frank. 2. Material Information: Please note that the material information is provided to Knight Frank by third parties and is provided here as a guide only. While Knight Frank has taken steps to verify this information, we advise you to confirm the details of any such material information prior to any offer being submitted. If we are informed of changes to this information by the seller or another third party, we will use reasonable endeavours to update this as soon as practical. 3. Photos, Videos etc: The photographs, property videos and virtual viewings etc. show only certain parts of the property as they appeared at the time they were taken. Areas, measurements and distances given are approximate only. 4. Regulations etc: Any reference to alterations to, or use of, any part of the property does not mean that any necessary planning, building regulations or other consent has been obtained. A buyer must find out by inspection or in other ways that these matters have been properly dealt with and that all information is correct. 5. Fixtures and fittings: A list of the fitted carpets, curtains, light fittings and other items fixed to the property which are included in the sale (or may be available by separate negotiation) will be provided by the Seller's Solicitors. 6. VAT: The VAT position relating to the property may change without notice. 7. To find out how we process Personal Data, please refer to our Group Privacy Statement and other notices at <https://www.knightfrank.com/legals/privacy-statement>.

Particulars dated March 2025. Photographs dated March 2025. All information is correct at the time of going to print. Knight Frank is the trading name of Knight Frank LLP. Knight Frank LLP is a limited liability partnership registered in England and Wales with registered number OC305934. Our registered office is at 55 Baker Street, London W1U 8AN. We use the term 'partner' to refer to a member of Knight Frank LLP, or an employee or consultant. A list of members names of Knight Frank LLP may be inspected at our registered office. If you do not want us to contact you further about our services then please contact us by either calling 020 3544 0692, email to marketing.help@knightfrank.com or post to our UK Residential Marketing Manager at our registered office (above) providing your name and address.