

Chalkdown, King's Somborne, Hampshire



Chalkdown, Cow Drove Hill, Kings Somborne, Hampshire

A modern four bedroom detached house in an elevated position with spectacular views of the village of Kings Somborne and beyond benefiting from a large garden.

The property has a welcoming and modern hallway with a separate cloakroom, leading off to a large family kitchen/breakfast room with plenty of storage areas and a separate dining room. The first floor comprises a spacious sitting room, with two doors leading onto a large balcony with south-facing views over the village. There are four double bedrooms, each with their own built-in wardrobe/storage areas and a family bathroom.

The rear garden has side access and a large open lawn area with trees and hedges for privacy. Ideal for outdoor entertaining, the garden features a patio space and views over the surrounding countryside to the rear.

Tenure: available freehold

Local Authority: Test Valley Borough Council

Council Tax band: E

Guide price: £650,000









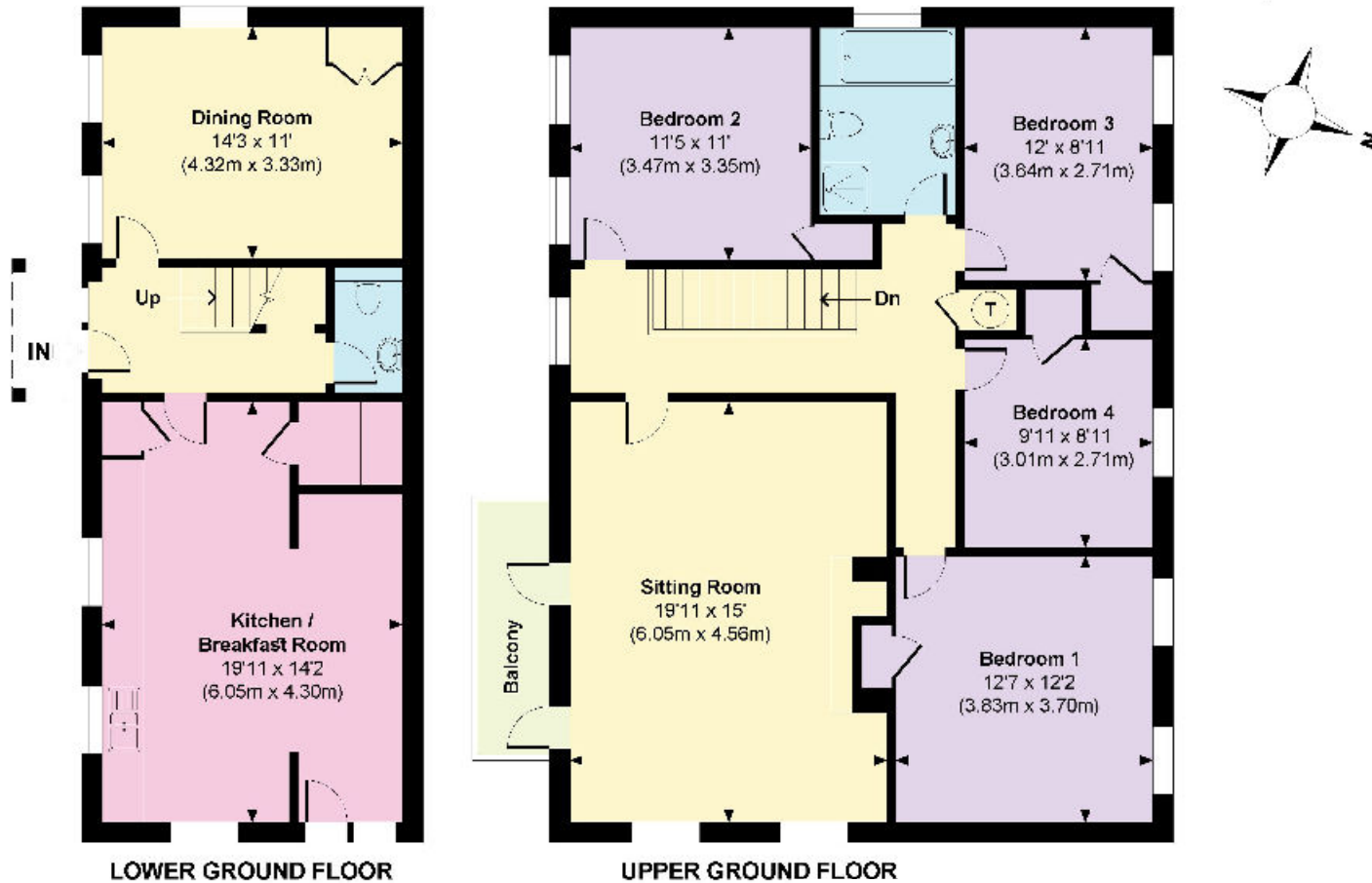
Location

The property is situated in the middle of Kings Somborne, which offers everyday facilities including a Post Office/store, primary school, church and public house. The picturesque town of Stockbridge, traversed by the River Test, is just five minutes away to the north, the abbey town of Romsey is approximately seven miles to the south, and the cathedral cities of Winchester and Salisbury are both within about fifteen and twenty five minutes' drive respectively. There are also excellent road links to London and the West Country via the M3 and A303 and also to the South Coast.



Chalk Down

Approximate Gross Internal Area
Total = 1569 Sq Ft / 145.73 Sq M



Knight Frank
Winchester
14-15 Jewry Street
Winchester
SO23 8RZ
knightfrank.co.uk

I would be delighted to tell you more

| | |
|--|--|
| Ed Hunt | Lottie Lambert |
| 01962 677236 | 01962 677246 |
| edward.hunt@knightfrank.com | lottie.lambert@knightfrank.com |



Fixtures and fittings: A list of the fitted carpets, curtains, light fittings and other items fixed to the property which are included in the sale (or may be available by separate negotiation) will be provided by the Seller's Solicitors.

Important Notice: 1. Particulars: These particulars are not an offer or contract, nor part of one. You should not rely on statements by Knight Frank LLP in the particulars or by word of mouth or in writing ("information") as being factually accurate about the property, its condition or its value. Neither Knight Frank LLP nor any joint agent has any authority to make any representations about the property, and accordingly any information given is entirely without responsibility on the part of the agents, seller(s) or lessor(s). 2. Photos, Videos etc: The photographs, property videos and virtual viewings etc. show only certain parts of the property as they appeared at the time they were taken. Areas, measurements and distances given are approximate only. 3. Regulations etc: Any reference to alterations to, or use of, any part of the property does not mean that any necessary planning, building regulations or other consent has been obtained. A buyer or lessee must find out by inspection or in other ways that these matters have been properly dealt with and that all information is correct. 4. VAT: The VAT position relating to the property may change without notice. 5. To find out how we process Personal Data, please refer to our Group Privacy Statement and other notices at <https://www.knightfrank.com/legals/privacy-statement>.

Particulars dated May 2024. Photographs and videos dated April 2024.

All information is correct at the time of going to print. Knight Frank is the trading name of Knight Frank LLP. Knight Frank LLP is a limited liability partnership registered in England and Wales with registered number OC305934. Our registered office is at 55 Baker Street, London W1U 8AN. We use the term 'partner' to refer to a member of Knight Frank LLP, or an employee or consultant. A list of members names of Knight Frank LLP may be inspected at our registered office. If you do not want us to contact you further about our services then please contact us by either calling 020 3544 0692, email to marketing.help@knightfrank.com or post to our UK Residential Marketing Manager at our registered office (above) providing your name and address.