

THE
OWO
RESIDENCES

Look anew upon these stone façades,
What is it that you see?
A palace fortress built on Whitehall,
Crowned with history.

Within its walls, a world extends,
And tempts us yet to wander.
And hence we drift on silent feet,
Our minds now primed to ponder.

The grand entrance of The OWO on Whitehall, with hotel rooms and heritage suites of Raffles London facing towards St James's Park.





CONTENTS

08

VISION

12

HISTORY

18

TRANSFORMATION

30

RESIDENCES

64

RAFFLES

80

CULINARY EXPERIENCE

90

PLACE

100

TEAM



VISION

“The OWO will be my greatest legacy to London for future generations to enjoy”

**GOPICHAND
PARMANAND
HINDUJA**

**CO-CHAIRMAN,
THE HINDUJA GROUP**

An aerial photograph of London, showing the River Thames, the Palace of Westminster, St James's Park, and the London Eye. The text 'THE OWO' is overlaid in the center, with a thin white line pointing from the 'O' to a building in the city.

THE OWO

A short stroll from The OWO takes you to the Thames riverside, the Palace of Westminster, the green spaces of St James's Park and Theatreland.

Destiny was set
within these walls

CHAPTER 1

HISTORY

The Old War Office played a pivotal role at key moments in the 20th century, when legendary figures such as Winston Churchill and Lawrence of Arabia walked these corridors of power – and steered the world's course.

Legends planned, plotted and toiled in these rooms



SIR WINSTON CHURCHILL

As Secretary of State for War from 1919-1921, Sir Winston Churchill occupied the grand suite of offices in the War Office on Whitehall.

For much of the 20th century these offices and corridors teemed with activity. Messengers delivered telegrams and deciphered signals. Clerks typed away day and night during times of international crisis. And whether soldiers, politicians or spies, many of the era's most legendary figures worked here.



T.E. LAWRENCE

"The marble stairs are only for Field Marshals and charwomen," quipped young Lt. Lawrence in 1914, just before he found fame as Lawrence of Arabia.



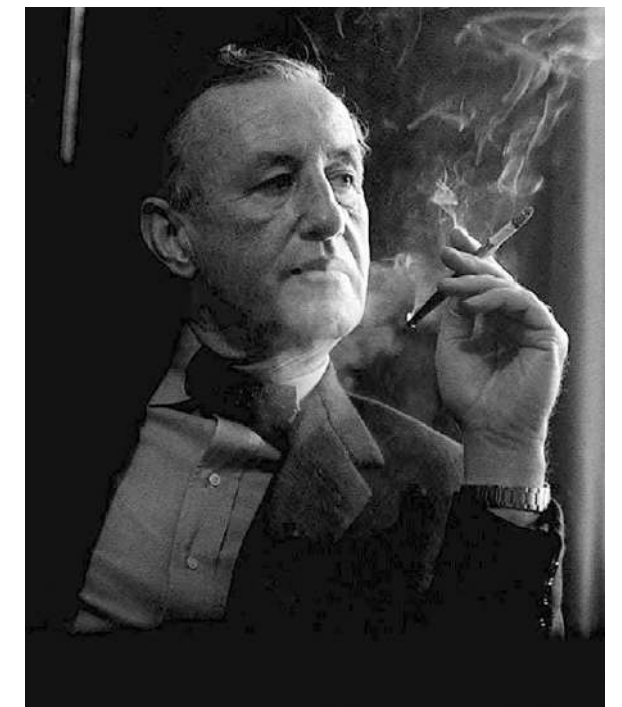
JOHN PROFUMO

Scandal came to the War Office in 1963 when it was revealed that John Profumo, Secretary of State for War, shared a mistress, Christine Keeler, with a KGB spy.



SIR MANSFIELD CUMMING

A British naval officer and the first head of the War Office's Secret Intelligence Service, Cumming lived and worked in Whitehall between 1909 and 1922.



SIR IAN FLEMING

As a young intelligence officer, Fleming found inspiration at the War Office for 007 and the James Bond character that would become a cinematic legend.

The sculptures 'Victory & Fame' perched on the Horse Guards Avenue façade.



**HIGH ABOVE WHITEHALL THE
DRURY SCULPTURES SIT QUIETLY
AND PENSIVELY**



Four pairs of imposing allegorical statues, standing 13 feet tall, high up on the façade of The OWO, were carved by Alfred Drury, one of the most prominent architectural sculptors of his era. "Each of the figures signified something that is nobly imagined and finely thought out," declared The Studio Magazine when the building opened in 1906.

A building reborn
for a new age

CHAPTER 2

TRANSFORMATION

The Old War Office is remade, with Raffles' first London hotel, a collection of landmark dining concepts and The OWO Residences by Raffles. A monumental project of aesthetic ambition, technical ingenuity and fine craftsmanship.

Architectural treasures, cherished and restored



The architectural and design teams retained much of the original fabric of the Grade II*-listed building, with its handsome proportions, exquisite detailing and fine materials. Remarkable architectural features such as the grand marbled central staircase and the intricate domed ceiling plasterwork are today awe-inspiring showstoppers on entering from Whitehall.



The majestic Grand Courtyard at The OWO. Here residents' valet parking is on hand at the dedicated residents' entrance.



The OWO viewed from the royal
St James's Park and the arches
of Horse Guards Parade.



The OWO Residences by Raffles are located in the quiet side streets on either side of the building towards the River Thames.



**THROUGH TOWERING
PORTALS A GLITTERING
NEW WORLD AWAITS**



The lofty scale and soaring ceiling heights in The OWO are retained in the new design, lending it a grandeur rarely seen in residential developments. New subterranean floors house a ballroom, swimming pool and private parking, while rooftop floors have been added with the utmost ingenuity to create light-filled spaces and terraces with some of the best views in London.

ST JAMES'S PARK



WHITEHALL



THE
OWO
RESIDENCES

WHITEHALL

HORSE GUARDS AVENUE

WHITEHALL PLACE

WHITEHALL COURT

The layout of The OWO is exceptional: at its heart is the Grand Courtyard, with the VIP entrance to Raffles London hotel and destination restaurants on one side; and on the other, the private entrance to The OWO Residences by Raffles. For residence owners, this configuration provides all the benefits of a world-class hotel whilst ensuring a level of privacy and security that is unparalleled.

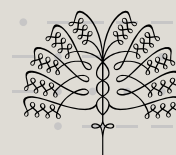
THE RIVER THAMES

Homes without
precedent

CHAPTER 3

RESIDENCES

Edwardian splendour is reimagined to provide the pinnacle of contemporary living at The OWO Residences, with 85 distinctive homes enjoying the most elevated levels of service from Raffles.



RAFFLES
LONDON



Living room: high ceilings, dark-wood floors and floor-to-ceiling windows create a mood of understated sophistication in this second floor reception space.



CRAFTSMANSHIP AND ELEGANCE

Kitchens feature finely-crafted custom cabinetry by leading British maker Smallbone of Devizes, along with Perla Venata surfaces, Crema Marfil stone floors and exquisite details such as brass inlay.

Rooftop terrace: this spectacular duplex Residence includes a large private terrace affording captivating views – and its own turret.



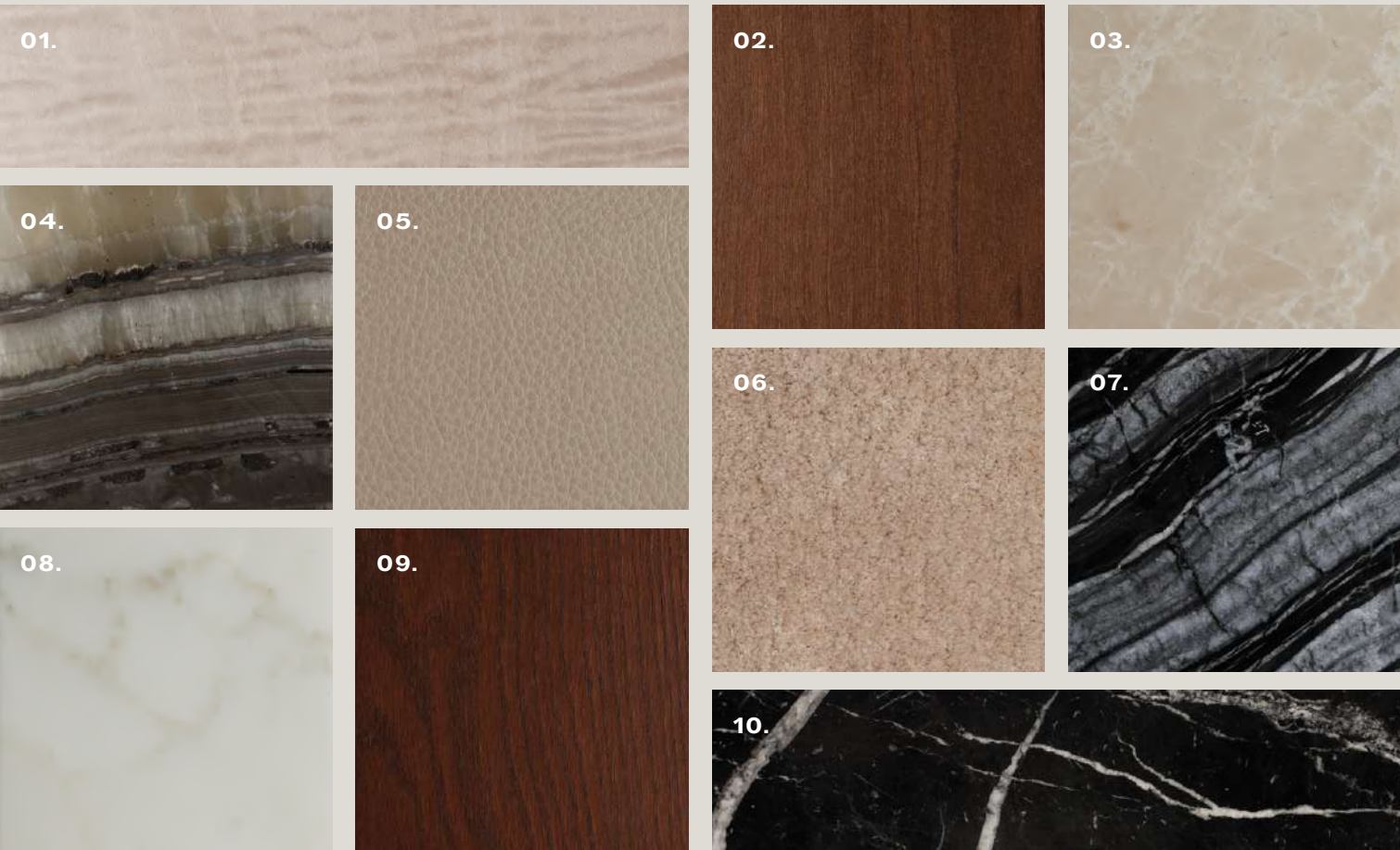


TO BATHE, TO RESTORE

Every Residence is a home like no other, each its own unique masterpiece in modern living, using the finest marbles, and tapware by Waterworks.







**THE MATERIALITY OF LUXURY
EXPRESSED IN MARBLE AND WOOD**

A delicate palette in the bathrooms and powder rooms mixes creamy and black-veined marbles with softer pinks, stones and figured sycamore.

Featured materials:*

01. Figured Sycamore: Wardrobe Joinery, Principal and Secondary Bedrooms; Vanity Cabinet, Guest WC

02. American Cherry: Vanity Cabinet, Principal Bathroom

03. Crema Sofia: Floor and Walls, Principal Bathroom

04. Elegant Grey Onyx: Principal Bathroom vanity stone

05. Faux leather exterior: Principal Bedroom Wardrobe
06. Mercenised cotton carpet, 100% hand-tufted: Secondary Bedroom

07. Silver Wave: Guest WC vanity stone

08. Calacatta Brazil: Floor, Guest WC

09. Stained oak with bronze ironmongery: Floors and Doors

10. Nero Marquina: Mosaic entrance and circulation flooring laid with White Camponili

*Indicative materials only.



**FINELY CRAFTED MARQUETRY
ADDS THE RICHNESS OF DETAIL**

The kitchen juxtaposes a variety of textures including wood grain, brass inlay, fluted glass and the smoothest of polished marbles.

Featured materials:*

01. Oak timber finish with brass inlay: Joinery, Kitchen

02. Crema Marfil: Floor, Kitchen

03. Perla Venata: Worktop, Kitchen

AMENITIES

With just 85 homes, owners are part of a very select community with full access to exceptional facilities available only to residents. Meticulously appointed spaces and the impeccable, gracious service for which Raffles is renowned, combine to create a true lifestyle experience.

A full list of the extensive residential amenities, inclusive and à la carte services is available on request.

UNPARALLELED AMENITIES
EXCLUSIVELY FOR RESIDENTS
INCLUDE:

- Dedicated Residents’ entrances
- Club Lounge
- Private Dining Room
- Work Spaces & Meeting Rooms
- Several Formal & Informal Lounges
- Garden Room
- Private Landscaped Garden

RESIDENTS’ WELLNESS

- Treatment Suite
- Gym Lounge
- Steam & Sauna
- Changing Rooms
- State-of-the-art Gym
- Weights and Stretching Zone
- Pilates Studio
- Yoga Studio
- Personal Training Studio
- Access to hotel’s 20m Swimming Pool with separate Vitality Pool*

LEISURE

- 16-seat Cinema
- Games Room equipped with Bar

ADDITIONAL

- Secure parking with number plate recognition
- Electric Vehicle Charging Stations
- Chauffeur rest facilities
- Secure storage units
- Secure bicycle storage

* the only amenity shared with hotel guests

Chartwell Room: one of several elegant private spaces for the exclusive use of residents leading to the private dining room.





Residents' Private Dining Room:
served by The OWO's restaurants
or your own private chef. Guests of
residents are well looked after in the
VIP Guest Lounge.



Swimming pool: an elegant space with double-height ceilings, the 20-metre Raffles hotel pool designed by Goddard Littlefair.



Gym: offering an abundance of natural light, the residents' gym has state-of-the-art equipment. Personal training can be arranged by the residents' concierge team.



Private cinema: residents can host private screenings in this elegant 16-seat cinema, designed in the sumptuous, classical style of a British theatre.

Chequers Room:: the sophisticated Art Deco decor adds a members club ambience while a bar amenity makes this space ideal for hosting private events.





**MOMENTS FROM
LONDON'S BUSTLE,
AN OASIS AWAITS**

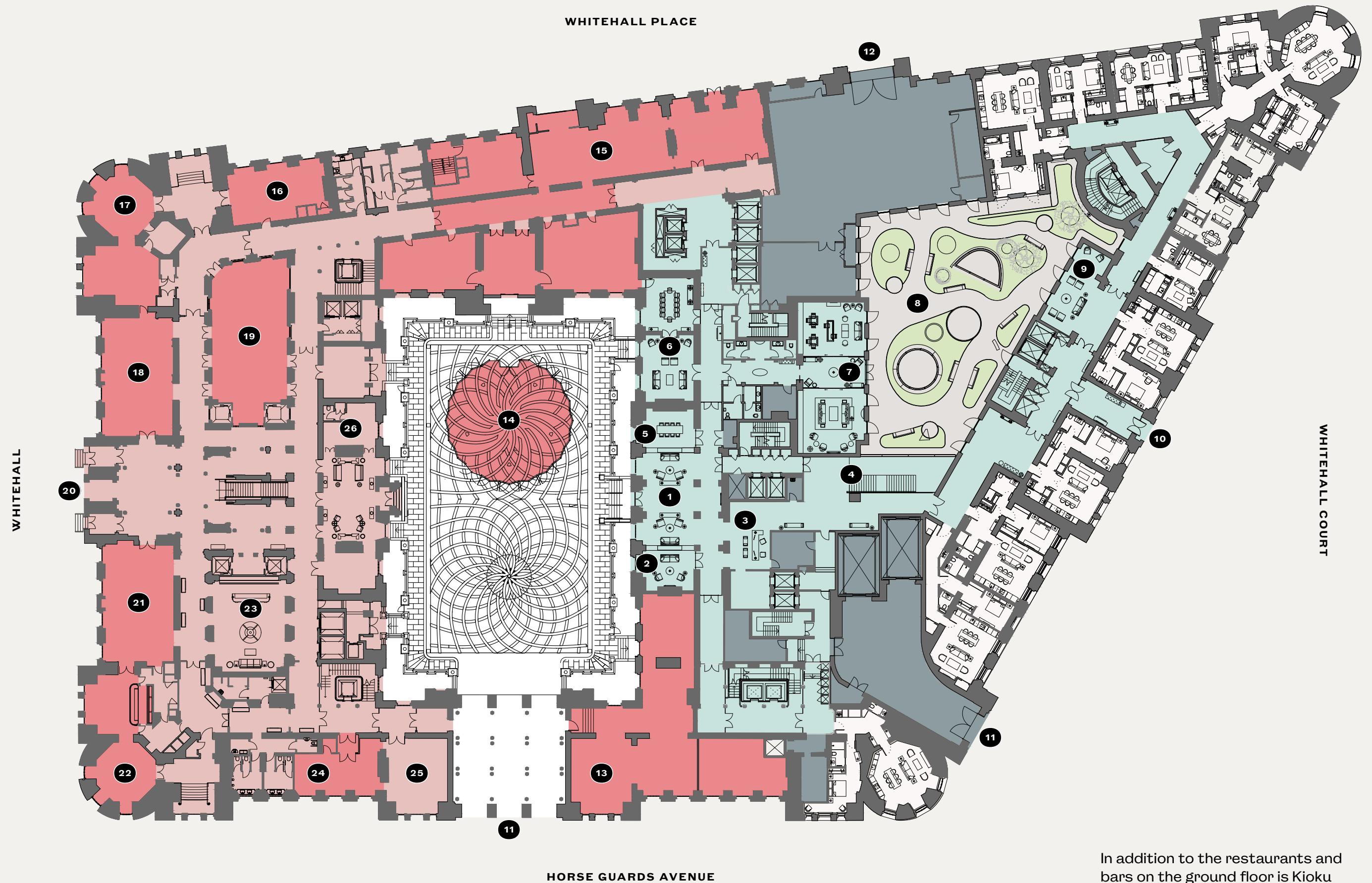


With its contemporary landscaping and sculptural water features, the Marcus Barnett-designed Garden is a haven for residents' exclusive use. Winding paths and imaginative English planting allow for moments of tranquility, while its vistas of greenery can be savoured when viewed from the Residences.

GROUND FLOOR PLAN

01. Residents' Lobby Lounge
02. VIP Guest Lounge
03. Residents' Concierge
04. Residents' Gym & Spa
05. The Boardroom
06. Chartwell Rooms
07. Garden Lounges
08. Residents' Garden
09. Reading Room
10. Spies Entrance
11. Parking Entrance
12. Courtyard Entrance
13. Paper Moon
14. The Pavilion (Opening 2025)
15. Whitehall Place (Opening 2025)
16. Kioku by Endo
17. Mauro's Table
18. Mauro Colagreco
19. Saison
20. Hotel Entrance
21. The Drawing Room
22. Horse Guards Bar
23. Hotel Concierge
24. Pillar Kitchen
25. L'Atelier Guerlain
26. Hotel Check-in

-  Residential Amenities
-  Residences
-  Hotel
-  Parking / Other
-  Restaurants & Bars
-  Residential Gardens



In addition to the restaurants and bars on the ground floor is Kioku by Endo, a rooftop restaurant by Japanese chef Endo Kazutoshi, and a surreptitious subterranean bar, The Spy Bar.

A haven of charm
and glamour

CHAPTER 4

RAFFLES

Since it opened its doors over 130 years ago in Singapore, Raffles has been synonymous with the world's finest hospitality. Now, with Raffles at The OWO, the world's most famous hotel is in London

The original Raffles Hotel in Singapore was built in 1887 and quickly became known for its glamour and gracious service. There are now Raffles hotels in the world's very best locations, from the US to China, South East Asia, the Middle East and Europe. Raffles London at The OWO is the brand's only hotel in the UK and its first Residences in Europe.





RAFFLES

“Raffles had been
waiting 130 years for
a chance like this.”

**SÉBASTIEN
BAZIN**

**CHAIRMAN AND CEO,
ACCOR**

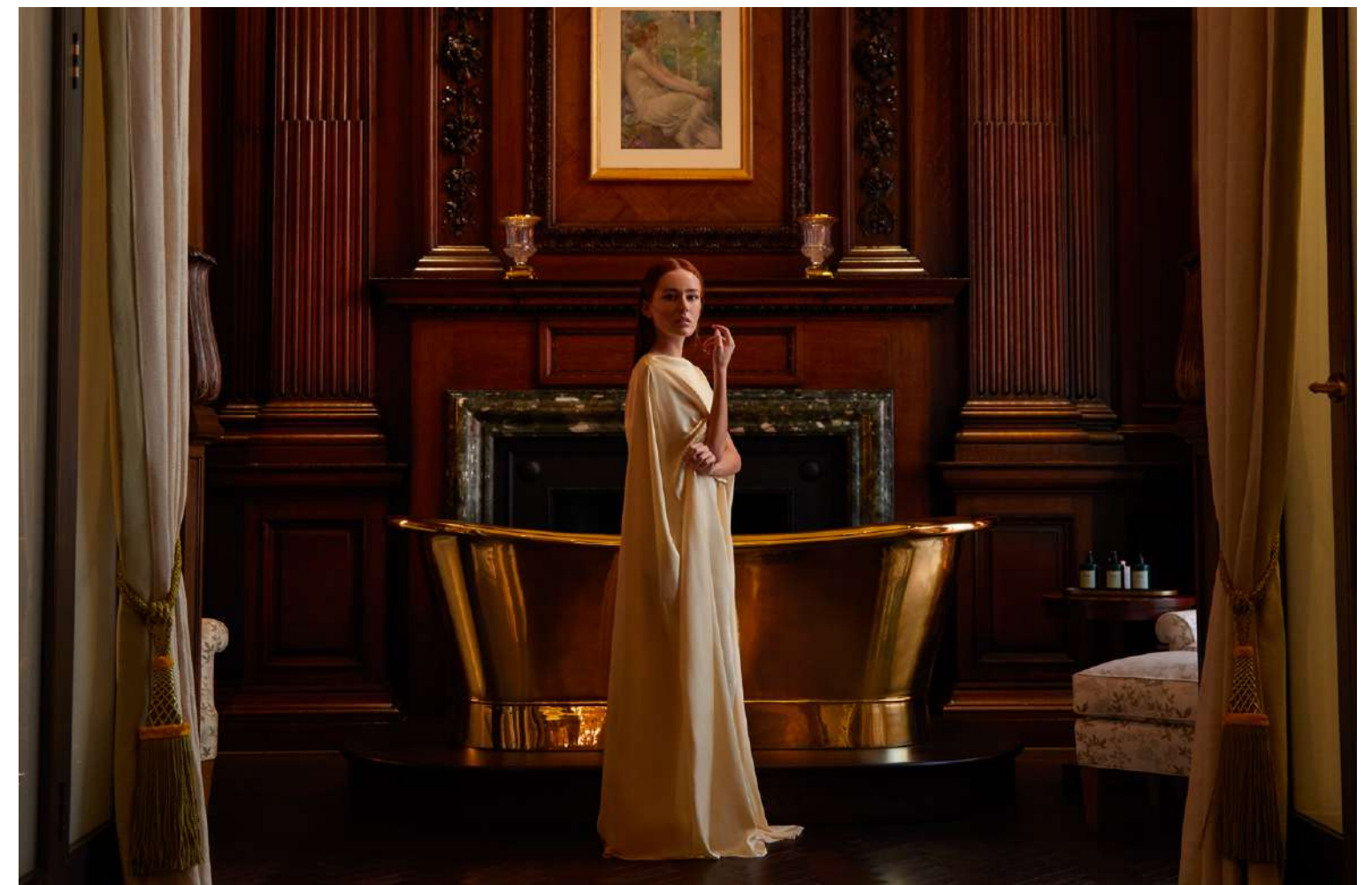
The Grand Staircase at the
Whitehall entrance of The OWO.



The warmest of welcomes
in the greatest of cities



Raffles was the perfect match for The OWO, not only because of the exemplary service and sophisticated luxury at the heart of the Raffles ethos, but because the brand has its origins in London, from where Stamford Raffles set sail in 1819 to found modern Singapore. East and west, past and future now come together at The OWO, with guests of the hotel and owners of the residences both enjoying Raffles' legendary hospitality.





GUERLAIN SPA

The Guerlain Spa at Raffles London at The OWO spans over 27,000 sq ft across four floors, and is one of the largest luxury hotel spas in the capital. Forming one of the key areas of this storied building, features include a spectacular 20m swimming pool, a vitality pool, exquisitely designed treatment suites, an extensive gym, and L'Atelier Guerlain.

Interior designers Goddard Littlefair created a timeless concept that envelops guests in calm and serenity. Nine treatment suites include three VIP Spa Suites and a private hair and beauty space. Guests can also enjoy personalised Guerlain make-up and perfumery services and express treatments at L'Atelier Guerlain. The Spa welcomes guests of Raffles London at The OWO, residents of The OWO Residences by Raffles, Pillar Wellbeing members, and day visitors.



**MOVEMENT, RECOVERY
AND NUTRITION EXPERTS,
PILLAR WELLBEING, OFFERS
INNOVATIVE GYM AND HEALTH
CLUB MEMBERSHIPS, AND
PILLAR KITCHEN.**

Pillar Wellbeing Memberships include access to the pool, gym, spa, unlimited group classes, and additional benefits.

Founded by elite performance coach Harry Jameson, Pillar caters to health-curious individuals looking to optimise their wellbeing today and future-proof for tomorrow.

Programmes are based on three 'pillars': Movement, Nourishment, and Recovery, with personalised training focusing on strength and stress relief. Practitioners provide a range of recovery experiences, and tailored nutrition from Pillar Kitchen is curated by chef Joey O'Hare.

Personal trainers and physiotherapists, many with degree-level sports science and/or pro sports backgrounds, provide expert guidance in fitness and recovery within Pillar's spa and gym facilities.





RAFFLES

"From the very first time
you walk in, you'll have the
feeling: 'I'm home.'"

**THIERRY W
DESPONT**

**FOUNDER, THE OFFICE
OF THIERRY W DESPONT**

A gourmet destination
in a class of its own

CHAPTER 5

CULINARY EXPERIENCE

The OWO proudly houses a collection of exceptional restaurants and exquisite bars, all crafted by the world's leading chefs and renowned restaurant brands.

With the expertise of top designers, architects, and artists, the destination has set a new global standard in gastronomic excellence.



**MICHELIN STAR CHEF MAURO COLAGRECO
AT RAFFLES LONDON**

Renowned for his highly acclaimed work at Mirazur, Chef Mauro has partnered with Raffles London to create exceptional dining experiences within the building's most historic rooms. These include a fine dining restaurant, Mauro Colagreco, his personal chef's table, Mauro's Table, and a stunning all-day dining venue called Saison.



LANGOSTERIA

ENRICO BUONOCORE'S MILANESE RESTAURANT

Making its UK debut, cult Milanese restaurant Langosteria will bring its fashion-world haunt to London for the first time in 2025.

Known for its impressive selection of signature seafood dishes, Langosteria selects the best ingredients from all over the world, combining Italian traditions with a contemporary international approach.





Kioku
by Endo

**JAPANESE-INSPIRED RESTAURANT AND SAKE BAR CREATED
BY MICHELIN-STARRED CULINARY DIRECTOR ENDO KAZUTOSHI**

Kioku by Endo at The OWO is a one-of-a-kind Japanese-influenced restaurant on the building's rooftop, accompanied by an intimate 25-cover sake bar modelled on traditional Japanese listening bars.

The restaurant features an outside terrace and a 12-seater private dining room situated in one of the building's historical turrets, with panoramic views across St James's Park, The Mall, and Buckingham Palace.



PAPER MOON
FAMILY-OWNED MILANESE RESTAURANT

An extension of the storied brand originally founded in Milan in 1977 and located in one of the grand heritage spaces at The OWO, Paper Moon provides a taste of genuine Italian tradition.

Offering both classic and signature dishes, the restaurant embodies the warmth of an Italian home, with olive trees and greenery intertwined throughout.

A neighbourhood
beyond compare

CHAPTER 6

PLACE

The OWO occupies one of the most privileged positions in London, in the historic heart of power and on the doorstep of St James's – a corner of the city like no other, where tradition and modernity mingle with precious charm.



In the midst of royal London,
a powerful address



History can be read in the street names around The OWO, which stands on the corner of Whitehall and Horse Guards Avenue. This most majestic of thoroughfares takes its name from the royal palace that once stood here, while the King's Life Guards still stand guard opposite The OWO every day.

**FROM ST JAMES'S TO MAYFAIR,
A LUXURY PLAYGROUND OF RARITY
AND STYLE**



For centuries, the streets of St James's and neighbouring Mayfair have played host to London's cosmopolitan elite. Untouched by generic luxury, today this district plays host to a distinctive and ever-evolving range of bespoke and luxury stores, galleries, auction houses, bars, private clubs and restaurants.





01.



02.



04.

01
Piccadilly viewed from the courtyard of The Royal Academy

02
The independent boutiques of Piccadilly Arcade

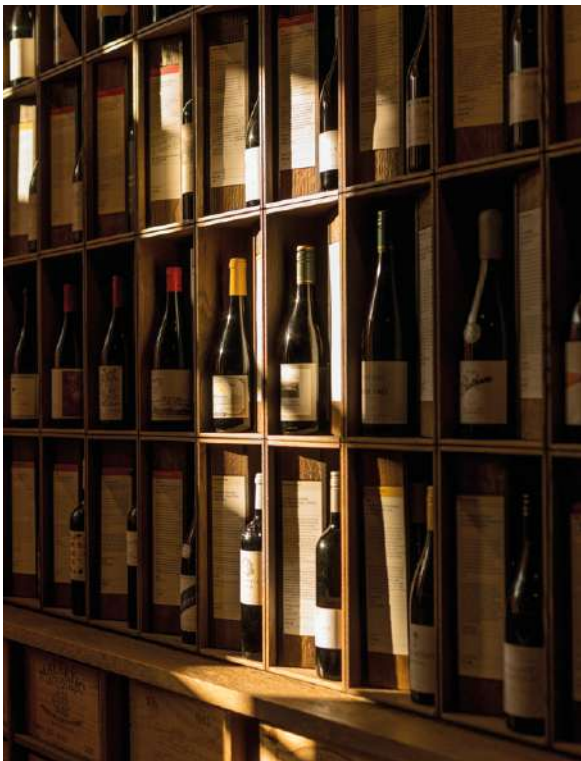
03
The windows and fine wines of Berry Bros. & Rudd

04
Jermyn Street, the historic home of menswear

05
The view from Horse Guards Parade towards the London Eye



03.



03.



05.



**A GLOBAL ALLIANCE OF PARTNERS
AND TALENTS CAME TOGETHER TO
CREATE THE OWO**



HINDUJA GROUP

Founded in 1914 in Mumbai by Parmanand D Hinduja, today the Hinduja Group is led by Parmanand's sons – Gopichand, Prakash and Ashok – along with the younger generation. With a century of experience, intelligent investment and disciplined growth, today the Group is a multi-billion-pound business in multiple sectors operating in 38 countries.

IMAGE
Grade 1 listed Carlton House Terrace
restoration by Hinduja Group



ONEX

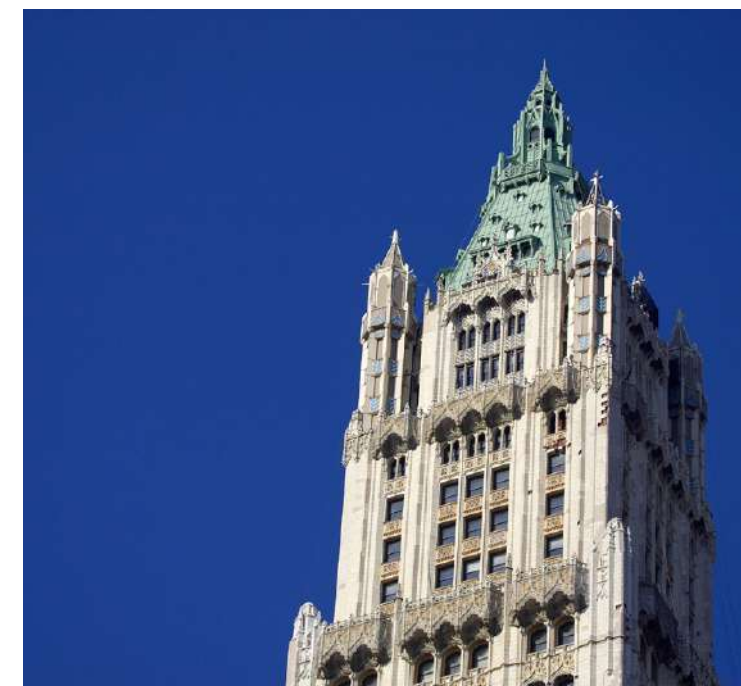
A privately led critical infrastructure group focused on investing in strategic sectors such as power generation & renewables, telecommunication, logistics, oil & gas and real-estate. The Group has over 1,500 employees across 8 different countries.



1508 LONDON

1508 London is an interior design studio that specialises in creating luxury residential and hospitality spaces around the world. Founded in 2010 and with offices in London, New York, LA, Singapore, Sydney, Dubai, Hong Kong and São Paulo, the company has a particular expertise in working with heritage buildings, taking inspiration from a project's associated geography, history and vernacular architecture.

IMAGE
Gym Lounge, The OWO Residences,
designed by 1508 London



THIERRY W DESPONT

The Office of Thierry W Despont is a New York-based design firm specialising in luxury residential work, hotels and retail, as well as museum projects and historical restorations, including The Ritz in Paris, the Statue of Liberty and Woolworth Building in Manhattan, where the firm is headquartered. The firm's signature style blends classicism with modernism to create uniquely timeless spaces.

IMAGE
Woolworth Tower Residences, New York,
with interior architecture by the late Thierry Despont



EPR

EPR Architects is one of the UK's leading hotel, hospitality and residential design practices experienced in creating high-quality hotels and prime-residential apartments. Known for its sympathetic restoration of heritage buildings, EPR masterminded the transformation of a Lutyens-designed London landmark building to become The Ned, a stylish hotel and hospitality venue in the City.

IMAGE
The Ned, London,
transformed by EPR Architects

THE OWO RESIDENCES

To discover more please request an
appointment with our Residences Team.

WWW.THEOWO.LONDON

enquiries@theowo.london

Our British Partners include:



BERRY BROS & RUDD
3, ST. JAMES'S STREET, LONDON
WINE & SPIRIT MERCHANTS

Residences Designer
1508 London

Garden Designer
Marcus Barnett

Residences Layout Designer
Taylor Howes

Architects
EPR Architects

Swimming Pool Designer
Goddard Littlefair

Development Manager
Whitehall Residences Ltd

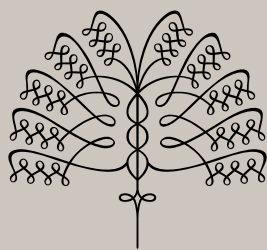
Hotel Designer
Office Of Thierry Despont

MORSE CODE

Morse code was a key method of communication during the First and Second World Wars. Operators were trained to recognise letters and words through an audio system of short and long beeps. The patterns shown here demark the geographical co-ordinates of The OWO.

Credits: CGIs - Grain London; Brand Direction - Jenny Naylor; Design and Art Direction - Greenspace.

The OWO Residences by Raffles ("Residences") are not owned, developed, or sold by Accor Hotels or its affiliates. Whitehall Residences Limited a company established under the laws of England and Wales ("Residences Owner"), is independently owned and operated and is solely responsible for the ownership and development of the Residences. Residences Owner uses the Raffles brand name and certain trademarks pursuant to a limited, non-exclusive, non-transferable and non-sublicensable license from Accor. Under certain circumstances, the license may be terminated or revoked according to its terms in which case Residences will not be identified as a Raffles branded project or have any rights to use the Raffles trademarks. Accor does not make any representations or guarantees with respect to the Residences and is not responsible for Residences Owner's marketing practices, advertising, and sales representations. Residences Owner, its appointed agents, and the development manager Westminster Development Services Limited ("WDS"), give notice that these images and associated particulars are prepared only for the general guidance of prospective buyers. They do not constitute part of an offer or contract. Any information contained herein is given in good faith but must not be relied upon as being a statement or representation of fact. Any areas, measurements or distances referred to herein are approximate only. Layouts are for guidance only and are not necessarily comprehensive. Some images and CGIs show specific finishes and architectural features that are only found in certain apartments and they are therefore not to be relied upon as relating to all apartments. WDS has the right to alter any specifications. To view the architectural and structural items excluded from these accommodation layouts and images, please request the architectural plans from the marketing office. Prospective buyers must rely on their own professional advice and satisfy themselves in relation to all the foregoing matters by inspection or otherwise. Prior to purchase or formal contract all prospective buyers will be required to appoint their own solicitors who will receive a full due diligence pack from the solicitors appointed by the Residences Owner. Prospective buyers must rely only upon advice from their solicitors and information supplied by the solicitors appointed by the Residences Owner to their solicitors in pre-contract due diligence.



RAFFLES
LONDON

theowo.london