

CENTRE POINT  
—  
VANTAGE COLLECTION

*Residences WC1*

# THREE BEDROOM

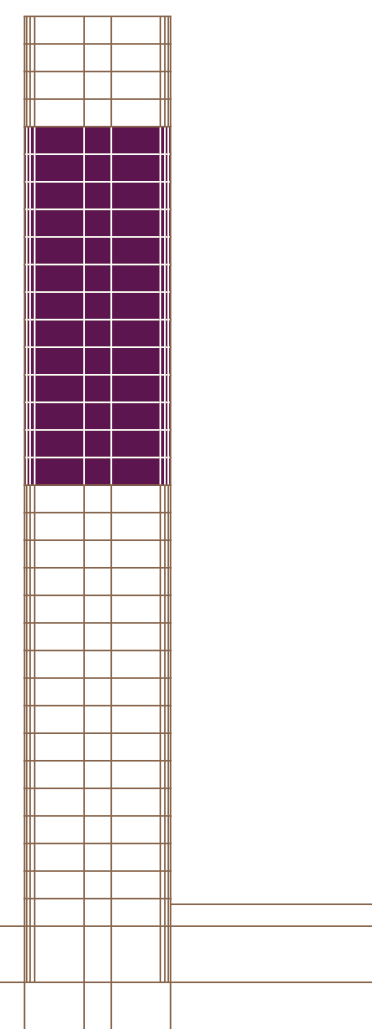
SOUTH FACING



APARTMENT NUMBERS

4 to 17 (no 13)

FLOORS 18 TO 30



## ENTRANCE

Three tone Bleu de Savoie bespoke patterned limestone flooring  
Dark stained oak panelled walls and wardrobes  
Bevelled mirrors

## LIVING AREA

Wide white washed oak board flooring  
White painted walls

## BEDROOMS

Grey deluxe Nusilk carpet

## KITCHEN

Boffi with Gaggenau appliances  
Marble counter tops and splash backs  
White matt lacquer bespoke cabinetry  
Stainless steel counter tops and splash back to utility area  
Marble tiled flooring

## MASTER BATHROOM

Marble walls, floor and bath surround  
Bespoke vanity unit with white lacquer drawer front and marble top  
Bespoke recessed lit mirror with demister

## EN SUITE

Basalt tiled walls and counter top  
Marble tiled flooring, counter top and bath surround  
Bespoke vanity unit with drawer  
Bespoke recessed lit mirror with demister

## GUEST BATHROOM

Basalt tiled walls  
Bespoke vanity unit with white lacquer front and marble top  
Bespoke recessed lit mirror with demister  
Marble tiled flooring

## GUEST WC

Marble panels and bespoke white marble mosaic walls  
Three tone Bleu de Savoie bespoke patterned limestone flooring  
Limestone counter top  
Bespoke recessed lit mirror with demister

## SANITARY WARE

Dornbracht Lulu range in chrome

## IRONMONGERY

Bespoke ironmongery designed by Conran & Partners in collaboration with Samuel Heath

## TOTAL AREA

198 sq m  
2133 sq ft

## KITCHEN < >

6.3 x 2.7m  
20 x 9ft

## LIVING AREA < >

5.6 x 10m  
18 x 33ft

## MASTER BEDROOM < >

5 x 3.9m  
16 x 13ft

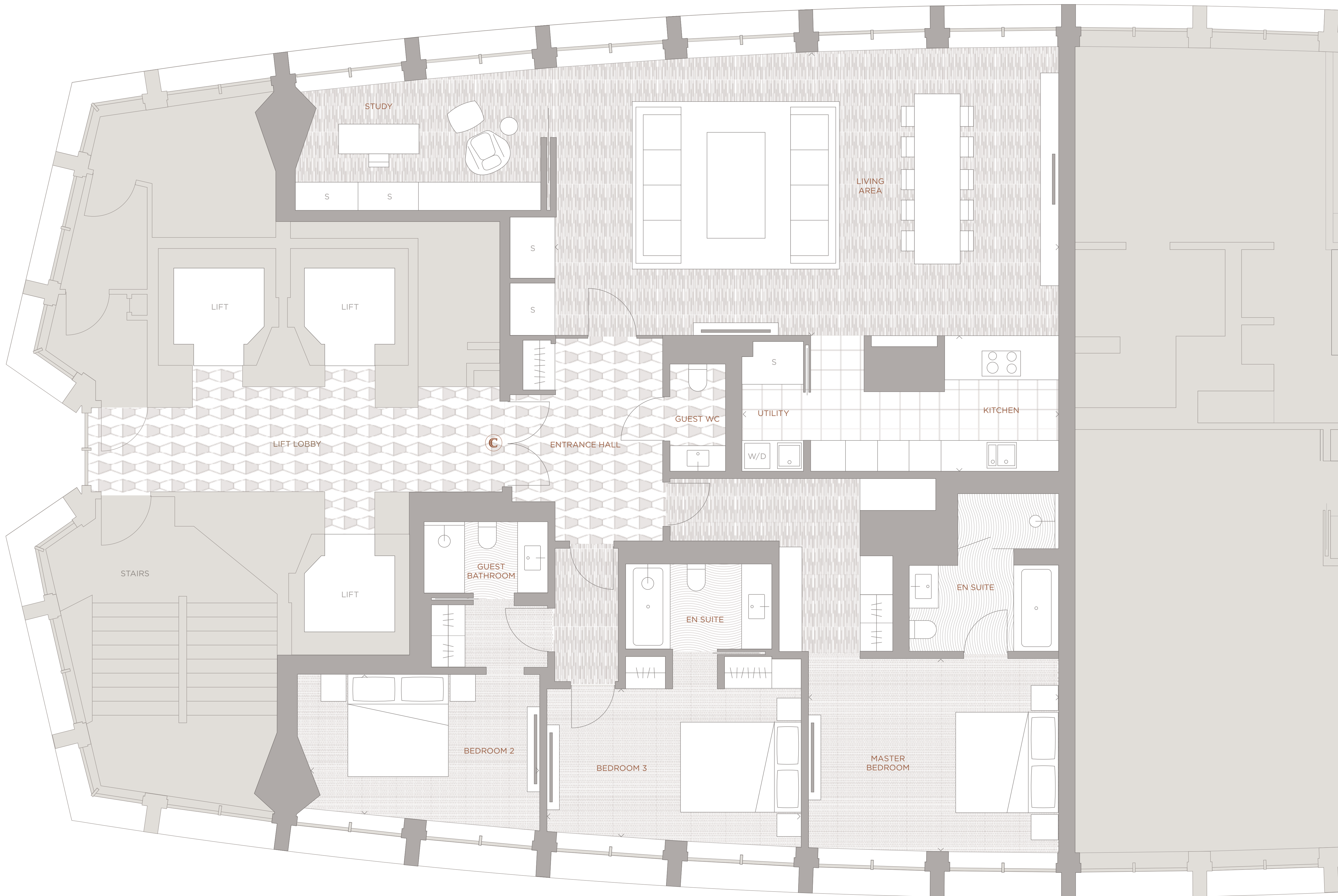
## BEDROOM 2 < >

4.5 x 2.8m  
15 x 9ft

## BEDROOM 3 < >

5.1 x 3m  
17 x 10ft

Floor areas are approximate.  
Plans and specifications are for indicative purposes only.



S - SERVICES  
W/D - WASHER DRYER