



Whitewood, Wentworth, Surrey

---







A **stunning contemporary property** with indoor swimming pool, occupying a quiet cul-de-sac location within the exclusive Wentworth Estate in Surrey.

## Summary of accommodation

**Ground Floor:** Entrance hall | Dining/sitting room | Family room | Study | Kitchen/breakfast room | Utility| WC

Indoor swimming pool with changing room, shower and WC | Sauna

**First Floor:** Galleried landing | Principal bedroom suite with dressing room and balcony | Four further bedroom suites (one with a balcony)

**Second Floor:** Media/games room

**Basement:** Plant room | Two stores

**Outside:** Garage | Gardens and grounds

In all about 0.8 acres

Total Approximate Gross Internal Floor Area: 9174 sq. ft / 852.35 sq. m

## Distances

Sunningdale 3.4 miles, Ascot 5.7 miles, Heathrow 9.6 miles, Mayfair 25 miles

(All distances are approximate)



Knight Frank Ascot & Virginia Water  
20 Station Approach  
Virginia Water  
GU25 4DW  
[knightfrank.co.uk](https://www.knightfrank.co.uk)

Edward Shaw  
01344 293140  
[edward.shaw@knightfrank.com](mailto:edward.shaw@knightfrank.com)

Knight Frank Country Department  
55 Baker Street  
London  
W1U 8AN  
[knightfrank.co.uk](https://www.knightfrank.co.uk)

Tom Hunt  
020 8106 1409  
[tom.hunt@knightfrank.com](mailto:tom.hunt@knightfrank.com)







## Whitewood

Located on a quiet no through road on the Wentworth Estate, the property is accessed via the estate security gates and private roads. It was designed and commissioned by the current owners and is presented in excellent condition, offering a style and layout a little different from the ordinary.

From entering via the hall way the feeling of space is in abundance, with an emphasis on natural light and a seamless relationship with the garden and grounds beyond. The open plan layout leading from the hall to the generous double height reception room to the rear of the house creates a sense of welcome, ideal for both every day family living and entertaining. The ground floor also comprises an excellent size kitchen which links to a family snug, utility room and garaging for three cars. There is also a well proportioned private study and guest cloakroom.

The first floor is arranged to provide a generous principal suite with access via floor to ceiling glass sliding doors to a balcony overlooking the garden and tree canopy beyond, with a further four bedroom suites of excellent proportions.







There is also a guest/media room to the second floor which could also be used a staff accommodation if required, and a small lower ground element offering excellent storage and utility space and a plant room.

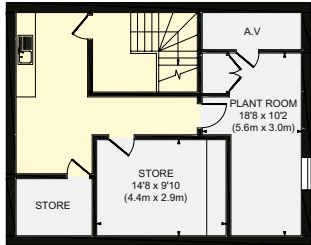
The indoor swimming pool is located off the kitchen with convenient access to a decked terrace area, and with views over the garden. There is also a changing room with shower, WC and sauna.



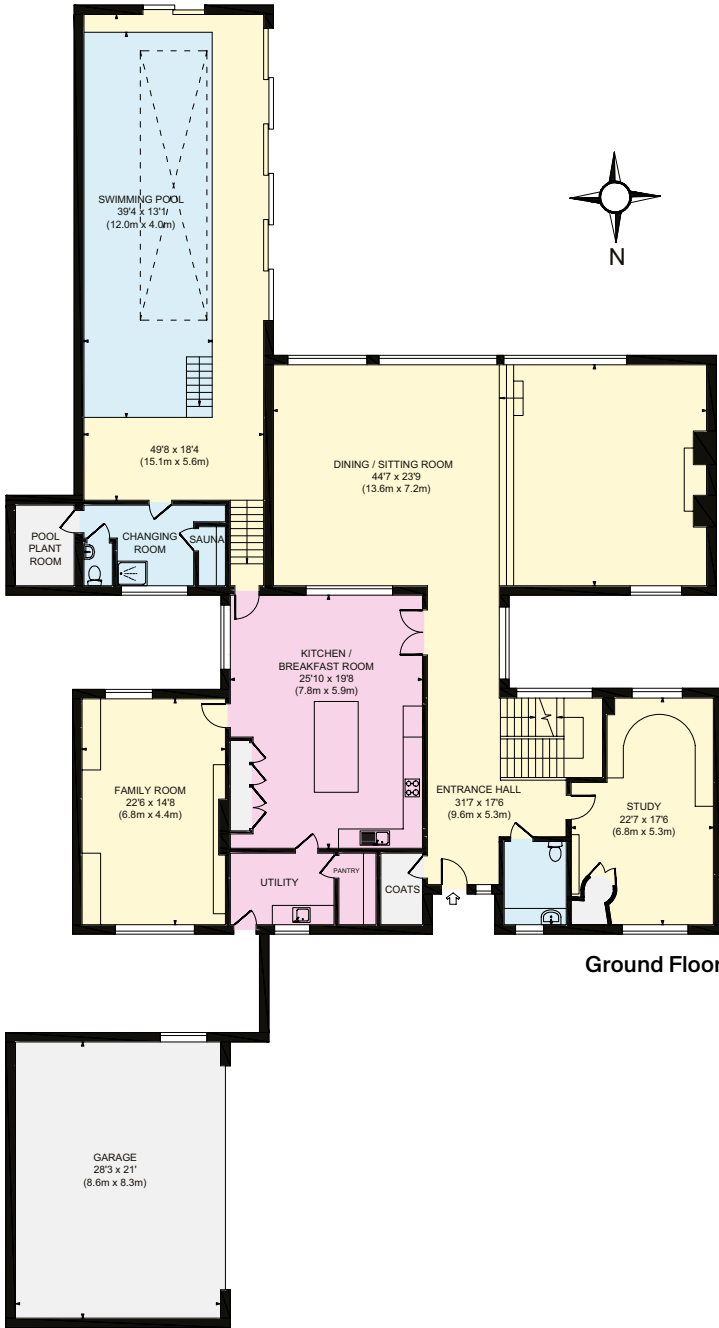


Approximate Gross Internal Floor Area  
Main House 8583 sq. ft / 797.40 sq. m  
Garage 591 sq. ft / 54.95 sq. m  
Total 9174 sq. ft / 852.35 sq. m

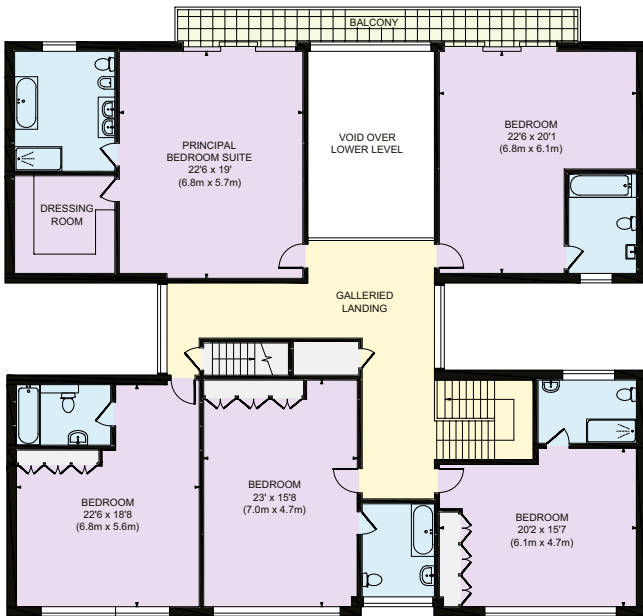
This plan is for guidance only and must not be relied upon as a statement of fact. Attention is drawn to the Important Notice on the last page of the text of the Particulars.



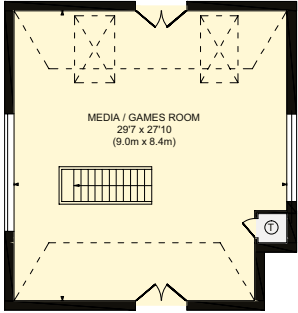
Basement



Ground Floor



First Floor



Second Floor

- Reception
- Bedroom
- Bathroom
- Kitchen/Utility
- Storage
- Outside







Location

An exclusive location with a tranquil atmosphere and access to world class sporting facilities. Virginia Water and the renowned private Wentworth Estate are situated to the south of Windsor Great Park, with its open spaces and is home to the notable lakes and green spaces of Savill Gardens.

Sporting activities abound throughout the area, with Royal Ascot nearby and an impressive selection of first class courses for golf enthusiasts. These include Sunningdale, the Berkshire and of course the world famous Wentworth Club, where first class tennis, gym, swimming and spa facilities are also available.

Fine dining can be enjoyed in a number of bistros, brasseries and fine restaurants, with the Waterside Inn and the Fat Duck at Bray, Wentworth Golf Club, and the five star Coworth Park Hotel. World class polo is at Guards Polo Club, Smiths Lawn, Windsor Great Park and the Royal County of Berkshire Polo Club, as well as Coworth Park. Other nearby attractions include Windsor Great Park, with its extensive walks and riding, rowing at Dorney Lake and on stretches of the River Thames, as well as the theatre in Windsor at The Theatre Royal, or in the West End of London.

Communications in the area are excellent. The mainline train station at Virginia Water provides a regular service into London Waterloo, taking around 45 minutes, whilst the M3 and M25 are also close by giving easy access to London, the M4 and national motorway network as well as Heathrow Airport (circa 9 miles).

Schooling is also exceptional with many renowned schools nearby such as Eton College, Lambrook, St George’s and St Mary’s Ascot, and Wellington College. The property is also well located for international schools such as TASIS located in Thorpe, and ACS International in Egham.

Property information

**Tenure:** Freehold  
**Local Authority:** Runnymede Borough Council  
**Council Tax:** Band H  
**EPC Rating:** C



Fixtures and fittings: A list of the fitted carpets, curtains, light fittings and other items fixed to the property which are included in the sale (or may be available by separate negotiation) will be provided by the Seller’s Solicitors. Important Notice: 1. Particulars: These particulars are not an offer or contract, nor part of one. You should not rely on statements by Knight Frank LLP in the particulars or by word of mouth or in writing (“information”) as being factually accurate about the property, its condition or its value. Neither Knight Frank LLP nor any joint agent has any authority to make any representations about the property, and accordingly any information given is entirely without responsibility on the part of the agents, seller(s) or lessor(s). 2. Photos, Videos etc: The photographs, property videos and virtual viewings etc. show only certain parts of the property as they appeared at the time they were taken. Areas, measurements and distances given are approximate only. 3. Regulations etc: Any reference to alterations to, or use of, any part of the property does not mean that any necessary planning, building regulations or other consent has been obtained. A buyer or lessee must find out by inspection or in other ways that these matters have been properly dealt with and that all information is correct. 4. VAT: The VAT position relating to the property may change without notice. 5. To find out how we process Personal Data, please refer to our Group Privacy Statement and other notices at <https://www.knightfrank.com/legals/privacy-statement>. Particulars dated October 2024. Photographs and videos dated October 2024. All information is correct at the time of going to print. Knight Frank is the trading name of Knight Frank LLP. Knight Frank LLP is a limited liability partnership registered in England and Wales with registered number OC305934. Our registered office is at 55 Baker Street, London W1U 8AN. We use the term ‘partner’ to refer to a member of Knight Frank LLP, or an employee or consultant. A list of members names of Knight Frank LLP may be inspected at our registered office. If you do not want us to contact you further about our services then please contact us by either calling 020 3544 0692, email to [marketing.help@knightfrank.com](mailto:marketing.help@knightfrank.com) or post to our UK Residential Marketing Manager at our registered office (above) providing your name and address. Brochure by [wordperfectprint.com](http://wordperfectprint.com)



