



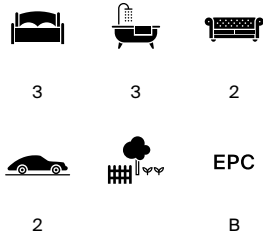
THE BARONS

Englefield Green, Egham, Surrey



A THREE BEDROOM HOUSE

Available at the prestigious
Magna Carta Park Estate in Surrey.



Local Authority: Runnymede Borough Council

Council Tax band: G

Tenure: Freehold

Annual service charge: £5,000

Guide price: £1,900,000





DESCRIPTION

A striking recreation of a traditional brick terrace with all the space and amenities of modern luxury living. This elegant three bedroom home features high quality Miele appliances throughout, wine fridge, underfloor heating, Marble Hill gas fireplace and air conditioning/heat pump for the upper two levels.

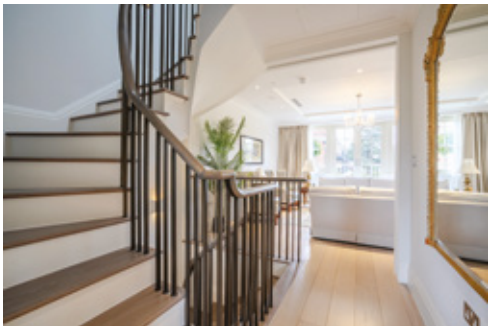
Upon entering the ground floor you are greeted by the stylish dining room, with Crittall glass double doors leading through to the open plan kitchen and private garden.

The first floor is home to the living room and private balcony with views overlooking the Great Lawn. The second bedroom with ensuite is also on the first floor.

On the second floor, you will find the principal bedroom and bedroom three both featuring en suite bathrooms.

Parking for two cars is located at the front of the house.





LOCATION

A private estate within 57 acres of parkland, with sweeping views over Windsor Castle and beyond. Offering 24-hour security/concierge, restaurant @ bar, swimming pool & spa, 2 tennis courts, pitch & putt golf green and a woodland walk.

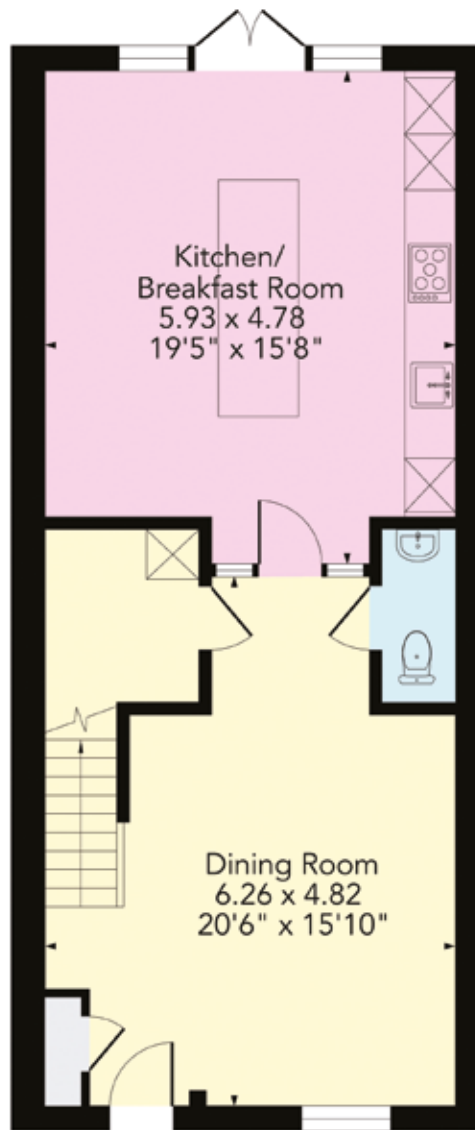
Just 30 minutes from London and close to Ascot, Englefield Green, Sunningdale and Windsor, it offers urban conveniences from the comfort of your own private rural escape.

The area benefits from fashionable shopping in Windsor to world-famous equestrian events at Guards Polo Club and Ascot, golf at Wentworth, or Michelin-starred dining on the banks of the Thames, Magna Carta Park sits at the heart of Surrey's social scene.

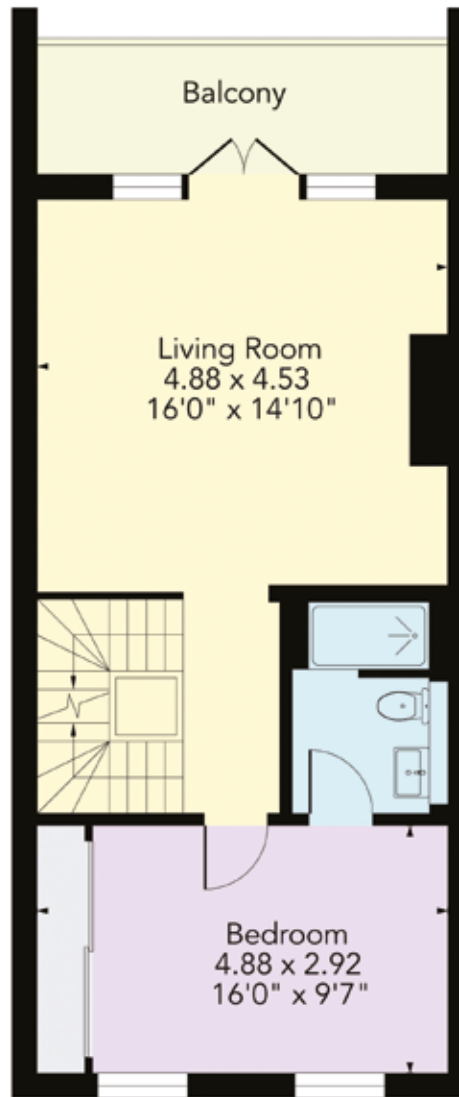
The development has excellent transport links, with trains from Egham reaching Waterloo in 41 minutes. For travel further afield, Heathrow Terminal 5 is just 12 minutes by car. Please note: all distances are approximate.



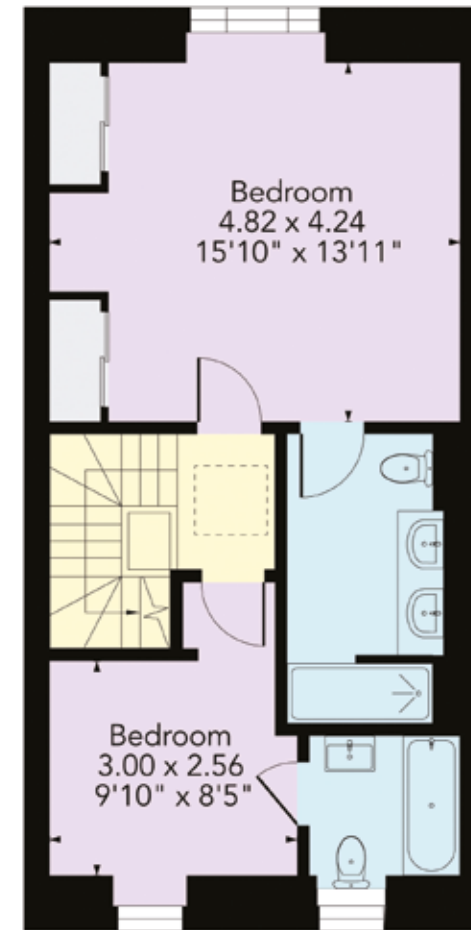




Ground Floor



First Floor



Second Floor

- Reception
- Bedroom
- Bathroom
- Kitchen/Utility
- Storage
- Outside

Approximate Gross Internal Area:
156.00 sq m / 1681 sq ft

This plan is for layout guidance only. Not drawn to scale unless stated. Windows and door openings are approximate. Whilst every care is taken in the preparation of this plan, please check all dimensions, shapes and compass bearings before making any decisions reliant upon them.

I would be delighted
to tell you more.

Alex Hancock
07484 540365
alex.hancock@knightfrank.com

Knight Frank Ascot & Virginia Water
59 High Street, Ascot
SL5 7HP

knightfrank.co.uk

Your partners in property

Important Notice 1. Particulars: These particulars are not an offer or contract, nor part of one. You should not rely on statements given by Knight Frank in the particulars, by word of mouth or in writing ("information") as being factually accurate about the property, its condition or its value. Neither Knight Frank nor any joint agent has any authority to make any representations about the property, and accordingly any information given is entirely without responsibility on the part of Knight Frank. 2. Material Information: Please note that the material information is provided to Knight Frank by third parties and is provided here as a guide only. While Knight Frank has taken steps to verify this information, we advise you to confirm the details of any such material information prior to any offer being submitted. If we are informed of changes to this information by the seller or another third party, we will use reasonable endeavours to update this as soon as practical. 3. Photos, Videos etc: The photographs, property videos and virtual viewings etc. show only certain parts of the property as they appeared at the time they were taken. Areas, measurements and distances given are approximate only. 4. Regulations etc: Any reference to alterations to, or use of, any part of the property does not mean that any necessary planning, building regulations or other consent has been obtained. A buyer must find out by inspection or in other ways that these matters have been properly dealt with and that all information is correct. 5. Fixtures and fittings: A list of the fitted carpets, curtains, light fittings and other items fixed to the property which are included in the sale (or may be available by separate negotiation) will be provided by the Seller's Solicitors. 6. VAT: The VAT position relating to the property may change without notice. 7. To find out how we process Personal Data, please refer to our Group Privacy Statement and other notices at <https://www.knightfrank.com/legals/privacy-statement>.

Particulars dated April 2025. Photographs and videos dated March 2025. All information is correct at the time of going to print. Knight Frank is the trading name of Knight Frank LLP. Knight Frank LLP is a limited liability partnership registered in England and Wales with registered number OC305934. Our registered office is at 55 Baker Street, London W1U 8AN. We use the term 'partner' to refer to a member of Knight Frank LLP, or an employee or consultant. A list of members names of Knight Frank LLP may be inspected at our registered office. If you do not want us to contact you further about our services then please contact us by either calling 020 3544 0692, email to marketing.help@knightfrank.com or post to our UK Residential Marketing Manager at our registered office (above) providing your name and address. Brochure by wordperfectprint.com