



GRANGE COURT ROAD


BS9



GRANGE COURT ROAD HENLEAZE

A handsome, detached, Edwardian home with beautifully designed interiors, landscaped gardens and off-street parking, set in a prime Henleaze address.



5


3


2

EPC
E





Local Authority: Bristol City Council
Council Tax band: G
Tenure: Freehold

Guide Price; £1,350,000



THIS DETACHED HOME OFFERS ACCOMMODATION ACROSS THREE FLOORS COMBINING PERIOD CHARACTER WITH A MODERN, FAMILY-FRIENDLY LAYOUT. SET BACK FROM THE ROAD WITH OFF STREET PARKING, THE HOUSE IS BEAUTIFULLY PRESENTED THROUGHOUT.

The reception hall, with exposed wood flooring and statement wallpaper from House of Hackney, leads through to the drawing room. This formal lounge is a bay-fronted space with a newly installed log burner and tiled surround, herringbone flooring and decorative cornicing. The room has been colour-drenched in a soft pink from Lick x Soho House. To the rear is the open plan kitchen, breakfast and living area - the wooden flooring continues from the hall, with original cornicing, two ceiling roses, dado rails and a marble fireplace with open fire. French doors open onto the sun terrace and garden. The dual-aspect kitchen is fitted with bespoke cabinetry, granite worktops, a central island and a Rangemaster cooker, with parquet flooring. A separate utility room offers further storage, space for appliances and side access to the garden. Off the hall, a recently renovated cloakroom features marble accents and underfloor heating, alongside a generous storage cupboard beneath the stairs.





On the first floor, the principal suite spans the width of the house. This bright, bay-fronted room with shutters features dark-stained timber flooring, and the recently renovated en suite includes a freestanding Tissino bath and a monsoon walk-in shower. Just off the landing, a walk-in wardrobe provides ample built-in storage.

The guest bedroom is filled with natural light, featuring picture rails, exposed wood flooring, and a large en suite with a freestanding bath and separate shower. A further double bedroom, currently used as a nursery, retains an original decorative fireplace and picture rails.

The top floor provides two additional double bedrooms and a dedicated study, all well served by a family shower room. Bedroom five benefits from generous eaves storage and a large built-in cupboard.



The rear garden is exceptionally private and landscaped into distinct areas. The paved sun terrace is complete with seating beneath a covered, heated pergola while steps lead to a large, level AstroTurf lawn framed by mature borders. An additional paved seating area at the end of the garden is perfect for enjoying the last light of the day. To the front of the house, there is off-street parking and planting that gives the house a set-back, private feel.

The house also benefits from approved planning permission (23/02445/H) for a modern rear extension, designed by Moon Design. The plans propose a flat-roof, single-storey addition to extend the existing open-plan kitchen and living space.

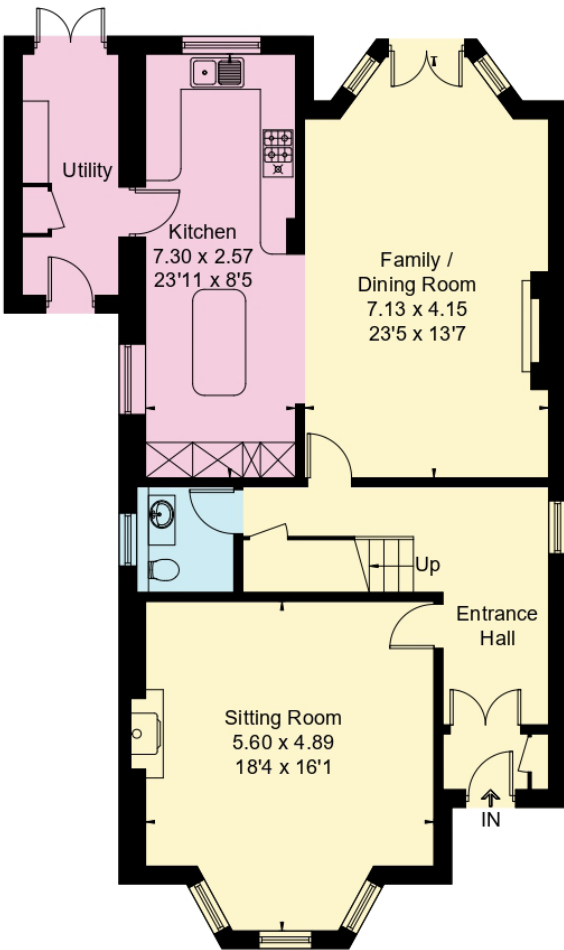




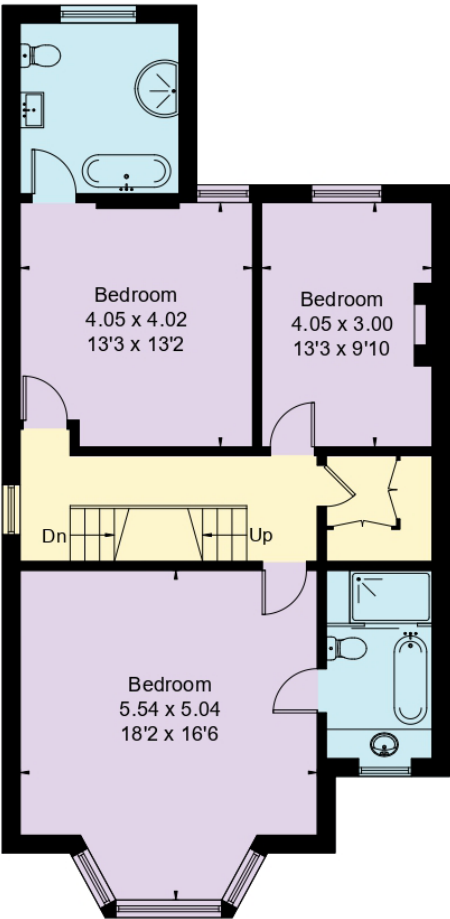
5 Grange Court Road

Bristol, BS9 4DP

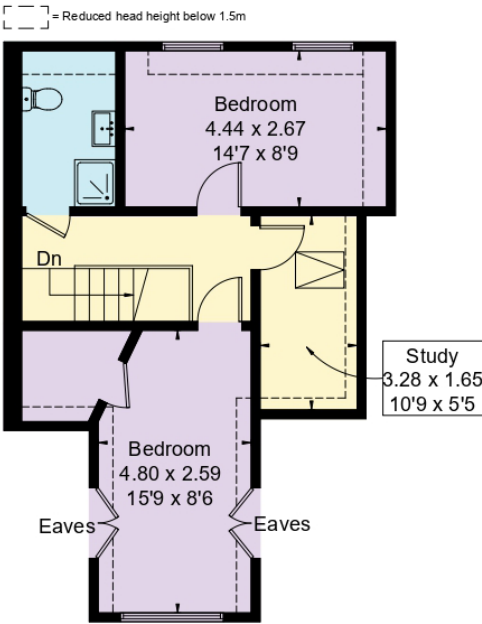
Gross Internal Area (Approx.) = 230.8 sq m / 2484 sq ft



Ground Floor



First Floor



Second Floor

This plan is for layout guidance only. Not drawn to scale unless stated. Windows and door openings are approximate. Whilst every care is taken in the preparation of this plan, please check all dimensions, shapes and compass bearings before making any decisions reliant upon them. (ID767266)

We would be delighted
to tell you more.

Xara Grigg
0117 317 1998
xara.grigg@knightfrank.com

Knight Frank Bristol
1 The Mall
Clifton

knightfrank.co.uk

Your partners in property

1. Particulars: These particulars are not an offer or contract, nor part of one. You should not rely on statements given by Knight Frank in the particulars, by word of mouth or in writing ("information") as being factually accurate about the property, its condition or its value. Neither Knight Frank nor any joint agent has any authority to make any representations about the property, and accordingly any information given is entirely without responsibility on the part of Knight Frank. 2. Material Information: Please note that the material information is provided to Knight Frank by third parties and is provided here as a guide only. While Knight Frank has taken steps to verify this information, we advise you to confirm the details of any such material information prior to any offer being submitted. If we are informed of changes to this information by the seller or another third party, we will use reasonable endeavours to update this as soon as practical. 3. Photos, Videos etc: The photographs, property videos and virtual viewings etc. show only certain parts of the property as they appeared at the time they were taken. Areas, measurements and distances given are approximate only. 4. Regulations etc: Any reference to alterations to, or use of, any part of the property does not mean that any necessary planning, building regulations or other consent has been obtained. A buyer must find out by inspection or in other ways that these matters have been properly dealt with and that all information is correct. 5. Fixtures and fittings: A list of the fitted carpets, curtains, light fittings and other items fixed to the property which are included in the sale (or may be available by separate negotiation) will be provided by the Seller's Solicitors. 6. VAT: The VAT position relating to the property may change without notice. 7. To find out how we process Personal Data, please refer to our Group Privacy Statement and other notices at <https://www.knightfrank.com/legals/privacy-statement>.

Particulars dated May 2024. Photographs and videos dated March 2024. All information is correct at the time of going to print. Knight Frank is the trading name of Knight Frank LLP. Knight Frank LLP is a limited liability partnership registered in England and Wales with registered number OC305934. Our registered office is at 55 Baker Street, London W1U 8AN. We use the term 'partner' to refer to a member of Knight Frank LLP, or an employee or consultant. A list of members names of Knight Frank LLP may be inspected at our registered office. If you do not want us to contact you further about our services then please contact us by either calling 020 3544 0692, email to marketing.help@knightfrank.com or post to our UK Residential Marketing Manager at our registered office (above) providing your name and address.