









HIGH STREET, CHEW MAGNA, NORTH SOMERSET

BS40



HIGH STREET, CHEW MAGNA, BS40 8PW

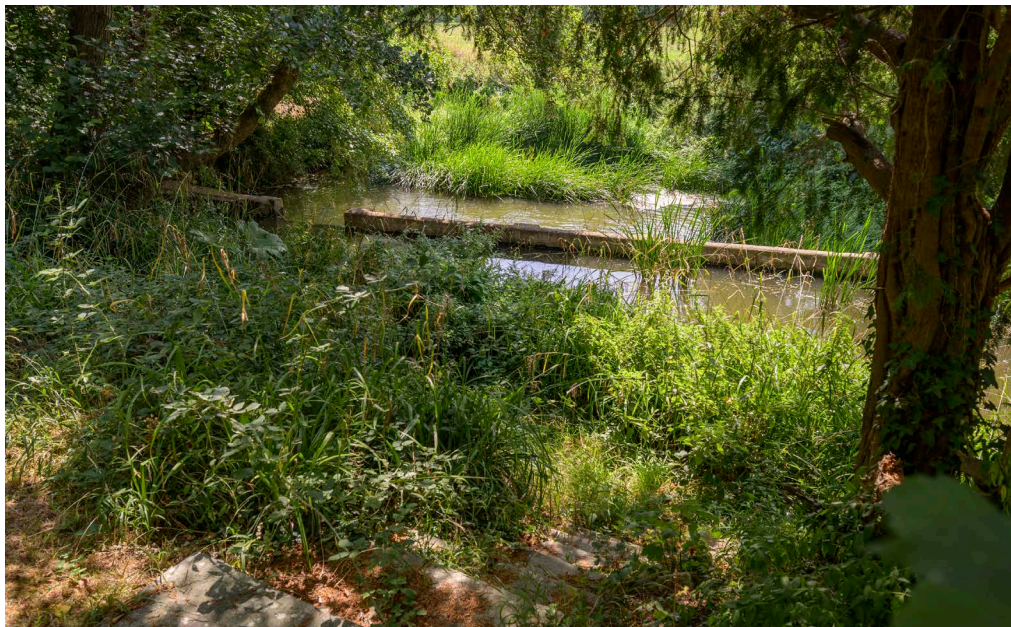
An extremely well-presented wing of an impressive Grade II listed 18th century village house with south facing garden leading down to the River Chew.

| | | | |
|---|---|---|-----------------|
|  |  |  | EPC |
| 4 | 3 | 3 | E |
|  |  |  | Grade II listed |

Local Authority: Bath & North East Somerset
Council Tax band: G
Tenure: Freehold

All main services connected to the property. Gas fire central heating.

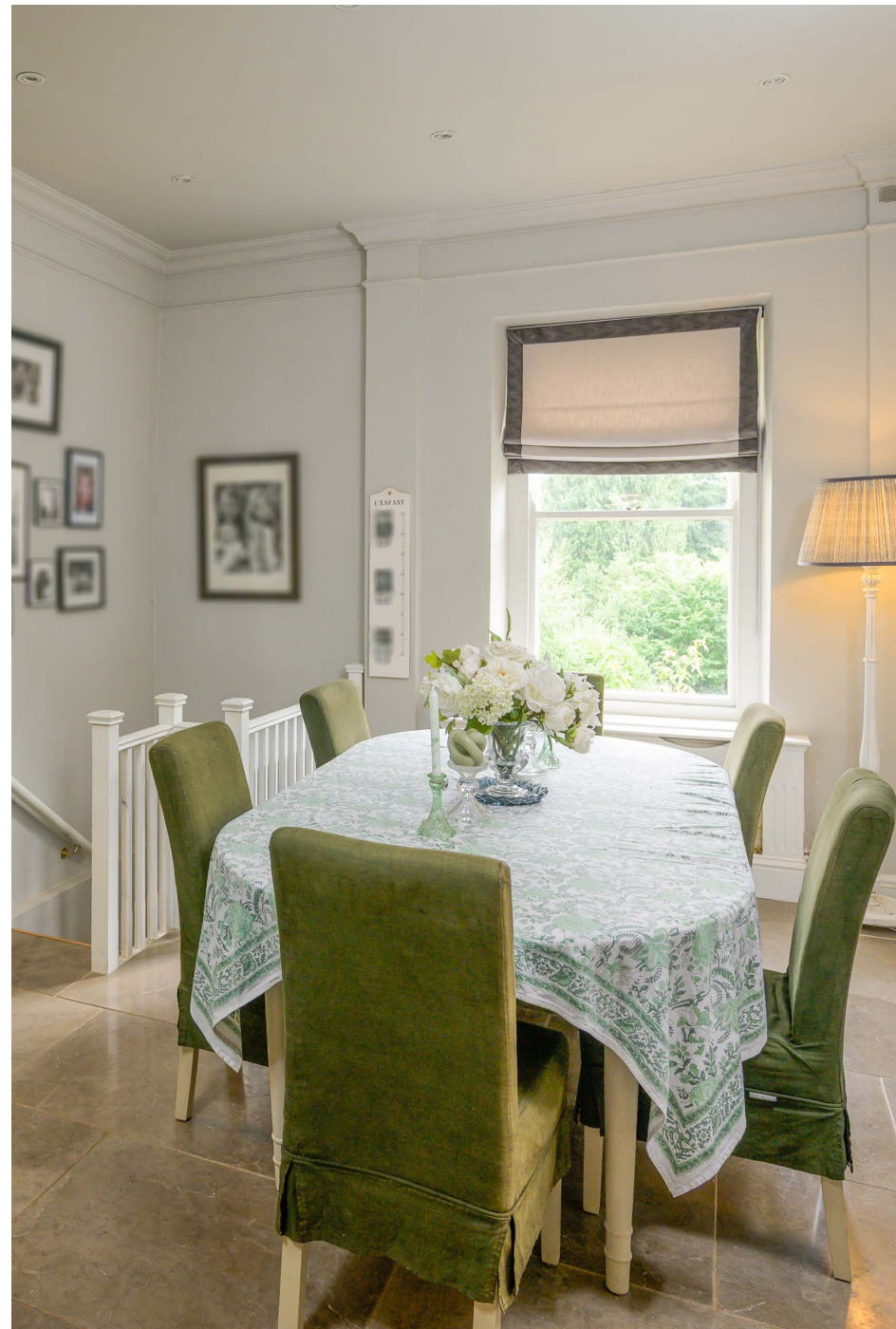
Guide Price: £1,395,000



THE PROPERTY

The Firs, which is Grade II listed, forms the west wing of an impressive village house. It is believed to date from the 1760s and extended in the 1790s. The rear elevation faces south and has wonderful views over its garden of shallow lawned terraces, which lead down to frontage of the River Chew, to countryside beyond.

The present owners who purchased the property in 2018 have since carried out a number of improvements, alterations, and very attractive redecoration. All period features are retained which include period fireplaces, shuttered windows, window seats and simple ceiling cornices.





THE PROPERTY

The inner staircase hall/orangery has a fine turning staircase leading to the first floor, a stone floor and bifold doors open to decked balcony overlooking the garden and beyond. A superb purpose designed and built kitchen with marble surfaces and integrated appliances including a Lacanche three oven range cooker, has been installed. From the kitchen an open archway leads into the dining room, with walk in pantry. The elegant sitting room is particularly atmospheric with panelling to dado height, and overlooks the garden as does the dining room.

On the first floor, the principal bedroom room has an en suite shower room. There are three further bedrooms, one of which is used as a study. There is a family bathroom with walk-in shower. On the second floor, a fourth bedroom opens onto a potential roof terrace.

A staircase in the dining room leads to the lower ground floor which includes a utility room with flagstone floor, shower room, cinema/occasional bedroom 5 with vaulted ceiling and two cellars.



OUTSIDE

The property is approached from the village high street through double wrought iron entrance gates mounted on stone pillars leading to a gravel parking area, and to a double garage to the west of the house.

The established gardens lie behind the house facing south with mature specimen trees and deep shaped borders planted with a variety of shrubs. They lead down to the banks of the River Chew and are private.

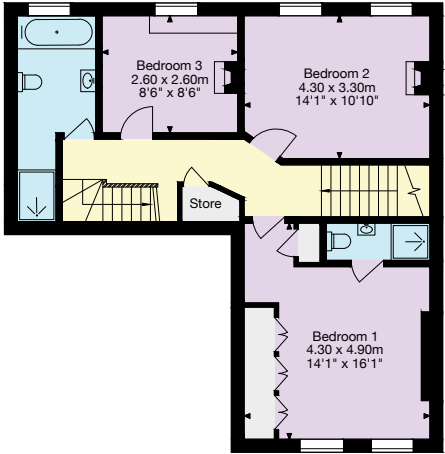
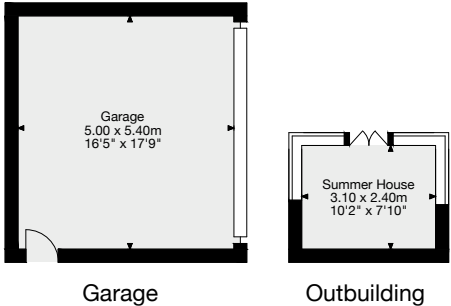
A gravel terrace area immediately outside the rear of the house has wonderful views over the garden and beyond to the Chew Valley countryside. This level is ideal for entertaining. From the terrace, there is access down to a level lawn and steps down to a further lower lawn with summer house. A gate from this level gives access down to a kitchen garden and a pathway leads through a natural garden to the banks of the River Chew.



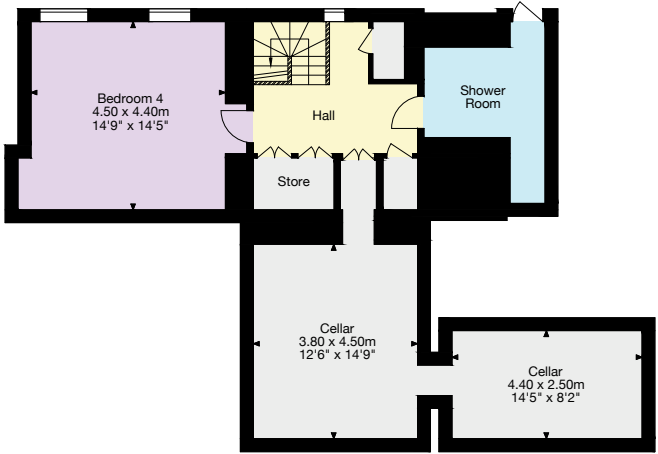


High Street, Chew Magna Bristol

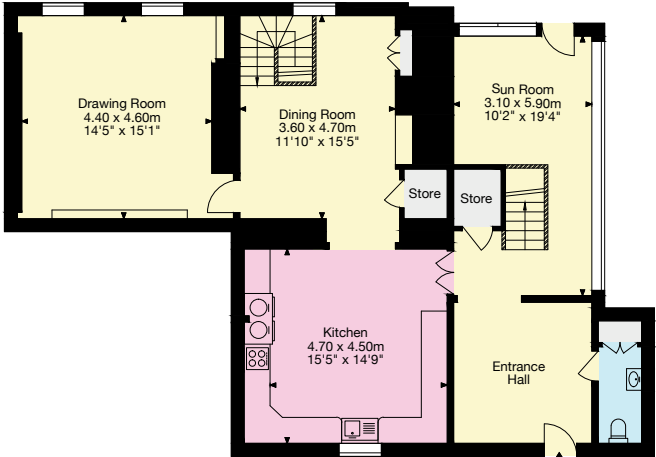
Gross Internal Area (Approx.)
Main House = 230.8 sq m / 2,484 sq ft
Outbuildings = 34 sq m / 365 sq ft
Total Area = 264.8 sq m / 2,849 sq ft
Outbuildings Not shown in actual location and orientation



First Floor



Basement



Ground Floor

- Living Area/Reception
- Kitchen/Utility
- Bedroom/Dressing Room
- Bathroom/WC
- Vaults/Storage
- Terrace/Outside Space

Important Notice: This plan is not to scale (unless specified), is for guidance only and must not be relied upon as a statement of fact. All measurements and areas are approximate only (and have been prepared in accordance with the current edition of the RICS Code of Measuring Practice). Please read the Important Notice on the last page of text of the particulars. © Capture Property Marketing 2025.



0117 317 1999
1 The Mall, Clifton
Bristol, BS8 4DP
bristol@knightfrank.com

(Including Basement / Loft Room)
Approximate Gross Internal Area = 264.6 sq m / 2,849 sq ft

This plan is for layout guidance only. Not drawn to scale unless stated. Windows and door openings are approximate. Whilst every care is taken in the preparation of this plan, please check all dimensions, shapes and compass bearings before making any decisions reliant upon them. (ID767266)

We would be delighted
to tell you more.

Robin Engley
0117 317 1996
robin.engley@knightfrank.com

Knight Frank Bristol
1 The Mall, Clifton, Bristol BS8 4DP

knightfrank.co.uk

Your partners in property

1. Particulars: These particulars are not an offer or contract, nor part of one. You should not rely on statements given by Knight Frank in the particulars, by word of mouth or in writing ("information") as being factually accurate about the property, its condition or its value. Neither Knight Frank nor any joint agent has any authority to make any representations about the property, and accordingly any information given is entirely without responsibility on the part of Knight Frank. 2. Material Information: Please note that the material information is provided to Knight Frank by third parties and is provided here as a guide only. While Knight Frank has taken steps to verify this information, we advise you to confirm the details of any such material information prior to any offer being submitted. If we are informed of changes to this information by the seller or another third party, we will use reasonable endeavours to update this as soon as practical. 3. Photos, Videos etc: The photographs, property videos and virtual viewings etc. show only certain parts of the property as they appeared at the time they were taken. Areas, measurements and distances given are approximate only. 4. Regulations etc: Any reference to alterations to, or use of, any part of the property does not mean that any necessary planning, building regulations or other consent has been obtained. A buyer must find out by inspection or in other ways that these matters have been properly dealt with and that all information is correct. 5. Fixtures and fittings: A list of the fitted carpets, curtains, light fittings and other items fixed to the property which are included in the sale (or may be available by separate negotiation) will be provided by the Seller's Solicitors. 6. VAT: The VAT position relating to the property may change without notice. 7. To find out how we process Personal Data, please refer to our Group Privacy Statement and other notices at <https://www.knightfrank.com/legals/privacy-statement>.

Particulars dated May 2024. Photographs and videos dated March 2024. All information is correct at the time of going to print. Knight Frank is the trading name of Knight Frank LLP. Knight Frank LLP is a limited liability partnership registered in England and Wales with registered number OC305934. Our registered office is at 55 Baker Street, London W1U 8AN. We use the term 'partner' to refer to a member of Knight Frank LLP, or an employee or consultant. A list of members names of Knight Frank LLP may be inspected at our registered office. If you do not want us to contact you further about our services then please contact us by either calling 020 3544 0692, email to marketing.help@knightfrank.com or post to our UK Residential Marketing Manager at our registered office (above) providing your name and address.