


9 Argyle Road


Clevedon, Somerset




A beautifully presented 20th century house with a contemporary interior, situated in the sought after Ladye Bay area, with views across the Channel to the Welsh Coast.

Bristol 13.4 miles Yatton Rail Station 5.6 miles Bristol Airport 10.5 miles M5 (J20) 4.2 miles
Cribbs Causeway Regional Shopping Centre 15.4 miles.
(Distances and times approximate).


5


3


2

Summary of accommodation

Main House

Ground Floor: Entrance porch | Staircase Hall | Open plan Breakfast kitchen/Family room | Sitting/Dining room
Utility room | Cloakroom | Bedroom with en suite Dressing area and Shower room
First Floor: Principal bedroom with en suite bathroom and two walk-in wardrobes | 3 further bedrooms
Gallery study/dressing room | Family bathroom with shower

Garden and Grounds


Integral double garage | 2 parking spaces | Private gardens



Situation

(Distances and times are approximate)

Argyle Road is situated in the much sought after area of Ladye Bay and just south of Clevedon Golf Club. It is within walking distance of Hill Road where there are a number of independent shops, boutiques, restaurants, a supermarket and coffee shops. The views from the rear of the property, particularly the first-floor principal bedroom suite, are superb with an extensive outlook over the Bristol Channel to the Welsh Coast.



Schooling is available at a number of primary schools in Clevedon. Clevedon Academy is Ofsted rated as good, and outstanding for personal development. Private schooling available at The Downs Preparatory School in Failand, and there is an excellent choice of schools in Bristol.



The Property

The house was built in 1993 and is part of an award winning development. Number 9 is in an attractive corner position and forms part of three properties in a small semi circular close.

The interior is extremely well presented, very light, and imaginatively designed. A contemporary atmosphere is created by a large amount of window space, vaulted ceilings, especially along the south west elevation, and a glazed roof in the dining area.

The particularly striking open plan breakfast kitchen was refitted in 2024. It has a central island with breakfast bar and a square archway leads into the family room. Integrated appliances include double oven, hob, dishwasher and fridge/freezer. There is a wood effect floor and a French door opens into the garden. The attractive sitting/dining room with wood effect floor combines the contemporary with the traditional. The sitting area has an open fireplace with stone surround, and the dining area with its glazed vaulted roof, opens to the garden. There is also a guest bedroom suite on the ground floor with built in wardrobes.

The staircase hall has a split staircase with one flight of stairs leading to the principal bedroom suite with two walk in wardrobes and an en suite bathroom. The views across the Channel to the Welsh coast are superb.

The second staircase leads to a gallery study/dressing room and bedroom. There are two further bedrooms and a family bathroom.



Outside

The property is approached over block paving providing parking for two cars in front of the integral double garage with two electrically operated up and over doors. There is a deep border planted with ornamental shrubs and a pathway leads to the rear garden.

The private and enclosed rear garden principally lies to the southwest and northwest of the house and is laid to level lawn with shaped borders planted with a variety of shrubs, and a lavender border. There are mature trees, a paved area outside the dining and kitchen area which is ideal for entertaining, and two built in benches along the southwest boundary wall.

Property Information

Tenure: Freehold

Services: All mains services are connected, gas fire central heating, double glazed windows.

Local Authority: North Somerset Council:
01934 888 888

Council Tax: Band G

EPC: C

Guide Price: £1,050,000

Directions (BS21 7BP): From the Ladye Bay direction, turn into Argyle Road. Turn right into the close between brick pillars. No 9 is seen immediately ahead.

Viewings: All viewings strictly by appointment only through the vendor's selling agents, Knight Frank LLP.

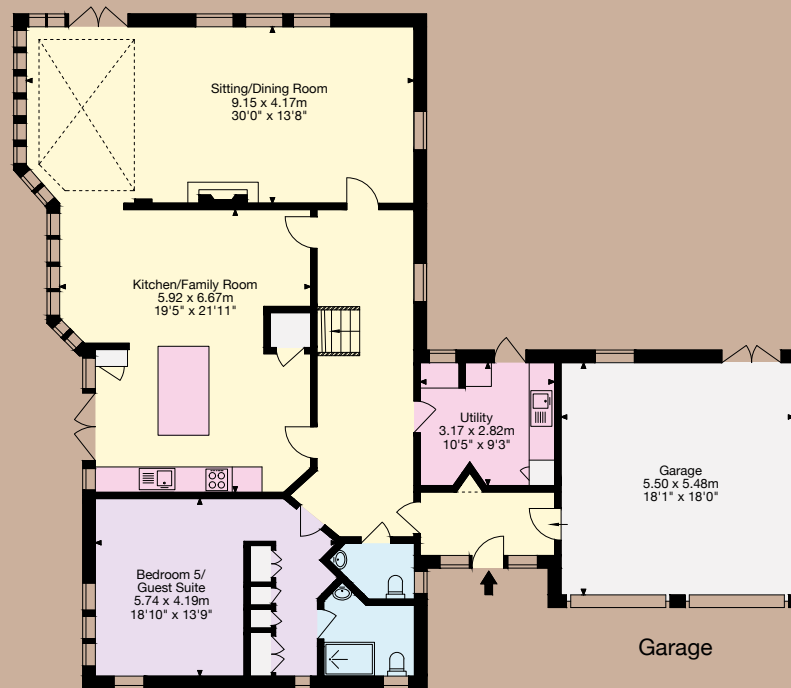
Approximate Gross Internal Floor Area

Main House: 260 sq m / 2,798 sq ft

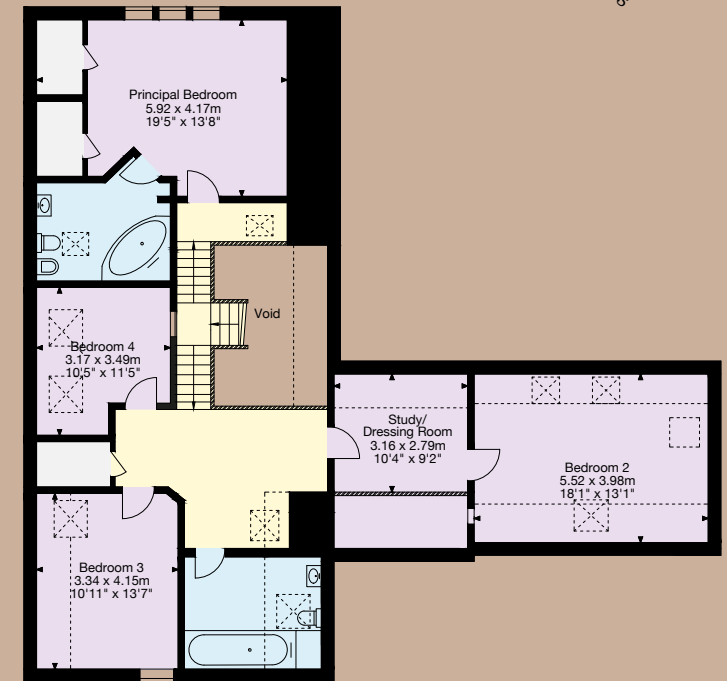
Garage: 30 sq m / 322 sq ft

Total Area: 290 sq m / 3,120 sq ft

This plan is for guidance only and must not be relied upon as a statement of fact. Attention is drawn to the important notice on the last page of the text of the Particulars.



Ground Floor



First Floor

Bristol

1 The Mall

Clifton

BS8 4DP

[knightfrank.co.uk](https://www.knightfrank.co.uk)

I would be delighted to tell you more

Robin Engley

01173 171996

robin.engley@knightfrank.com



Fixtures and fittings: A list of the fitted carpets, curtains, light fittings and other items fixed to the property which are included in the sale (or may be available by separate negotiation) will be provided by the Seller's Solicitors.

Important Notice: 1. Particulars: These particulars are not an offer or contract, nor part of one. You should not rely on statements by Knight Frank LLP in the particulars or by word of mouth or in writing ("information") as being factually accurate about the property, its condition or its value. Neither Knight Frank LLP nor any joint agent has any authority to make any representations about the property, and accordingly any information given is entirely without responsibility on the part of the agents, seller(s) or lessor(s). 2. Photos, Videos etc: The photographs, property videos and virtual viewings etc. show only certain parts of the property as they appeared at the time they were taken. Areas, measurements and distances given are approximate only. 3. Regulations etc: Any reference to alterations to, or use of, any part of the property does not mean that any necessary planning, building regulations or other consent has been obtained. A buyer or lessee must find out by inspection or in other ways that these matters have been properly dealt with and that all information is correct. 4. VAT: The VAT position relating to the property may change without notice. 5. To find out how we process Personal Data, please refer to our Group Privacy Statement and other notices at <https://www.knightfrank.com/legals/privacy-statement>.

Particulars dated May 2025. Photographs and videos dated May 2025.

All information is correct at the time of going to print. Knight Frank is the trading name of Knight Frank LLP. Knight Frank LLP is a limited liability partnership registered in England and Wales with registered number OC305934. Our registered office is at 55 Baker Street, London W1U 8AN. We use the term 'partner' to refer to a member of Knight Frank LLP, or an employee or consultant. A list of members names of Knight Frank LLP may be inspected at our registered office. If you do not want us to contact you further about our services then please contact us by either calling 020 3544 0692, email to marketing.help@knightfrank.com or post to our UK Residential Marketing Manager at our registered office (above) providing your name and address.