

Chantry House, Lower Failand

A delightful former coach house, beautifully presented, in a lovely setting with a tree lined approach and views over adjoining farmland.

Summary of Accommodation

Ground floor Dining hall | Sitting room | Study | Open plan kitchen/breakfast/family room
Utility room | Cloakroom

First floor Principal bedroom with balcony and en suite bath/shower room
4 further bedrooms | En suite shower room | Family bath/shower room | Large storage loft

Outside Long tree lined approach | Parking | Gardens | Terraces

Distances

Bristol 7 miles | Clifton Village 5.5 miles | Bristol Airport 8 miles

Bristol Temple Meads (London Paddington) 7 miles | Nailsea & Backwell Rail Station 4.9 miles | M5 (J19) 3 miles | Cribbs Causeway Regional Shopping Centre 9 miles
(Distances are approximate).

The Property

Chantry House is situated in a lovely rural, although not isolated, setting 10 minutes from Clifton Village and convenient for Bristol. It is approached over a tree lined drive and there are open views over adjoining farmland to the village church and across to the Welsh coast. This is a beautiful and unique location, secluded and private but convenient for Bristol, Portishead and Nailsea. There are also many footpaths accessible directly from the lanes around Chantry House.

Chantry House dates from 1887 when it was built as the coach house to the adjacent rectory and St Bartholemew's church, which lies opposite. It was converted in the 1970's and later extended. The present owner purchased the property in 2012 and has since carried out a number of attractive improvements which included installing and relocating the kitchen, replacing the bathrooms and shower room, and replacing some floors with American oak. The combination of stone walls, light oak floors and semi open plan design on the ground floor has created a warm and light atmosphere.





The dining hall has a wide stone archway and leads into the sitting room, a glazed door leads to a large outside Courtyard. The study at the rear of the house overlooks the south facing garden. The bespoke kitchen/ breakfast/family room is superb. Integrated appliances include a range cooker, microwave, dishwasher and an island unit with breakfast bar. Worktops are solid walnut.

From the sitting area large French doors and windows allow a lovely outlook along the drive and over countryside.

On the first floor, the principal bedroom with balcony has a view for miles to the east, to the Welsh coast, and south over farmland. The four further bedrooms, one with en suite shower room, have open views. The principal en suite bath/shower room, en suite shower room and family bath/shower room are all extremely well appointed. Above this bedroom and bathroom there is an extensive storage loft which is accessed by sturdy loft steps.

Outside

Chantry House is approached through electrically operated gates on stone piers and over a long tree lined drive with lawn on either side, leading to the front of the house. There is parking for a number of vehicles.

To the west of the house is a large private paved area, ideal for entertaining. The part walled rear private garden is south facing and adjoins farmland with open views over countryside and across to woodland in the distance. Immediately from the rear of the house, central stone steps lead up to lawn with a raised stone bed on either side planted with a variety of shrubs. There is an ornamental pond and a split level paved sitting area, with superb views. Immediately outside the kitchen, a pair of double French doors open to a further paved enclosed area.

In all the property extends to about 0.35 of an acre.

Directions (BS8 3SR)

From the Ox House Lane direction turn left at the bottom. Pass a telephone box on the left hand side and the entrance to Chantry House is seen as the next entrance on the left hand side.





Property information

Services: Main water and electricity connected. Oil fire central heating. Under floor central heating to the breakfast kitchen/family room, Principal Bedroom and En Suite Bathroom and bath and shower rooms. Broadband provided by BT

Local Authority: North Somerset District Council Tel : 01934 888 888

Council Tax: Band G

Viewing: Strictly by appointment only with agents Knight Frank Tel: 0117 317 1999.

EPC: E

Offers in excess of £1,050,000



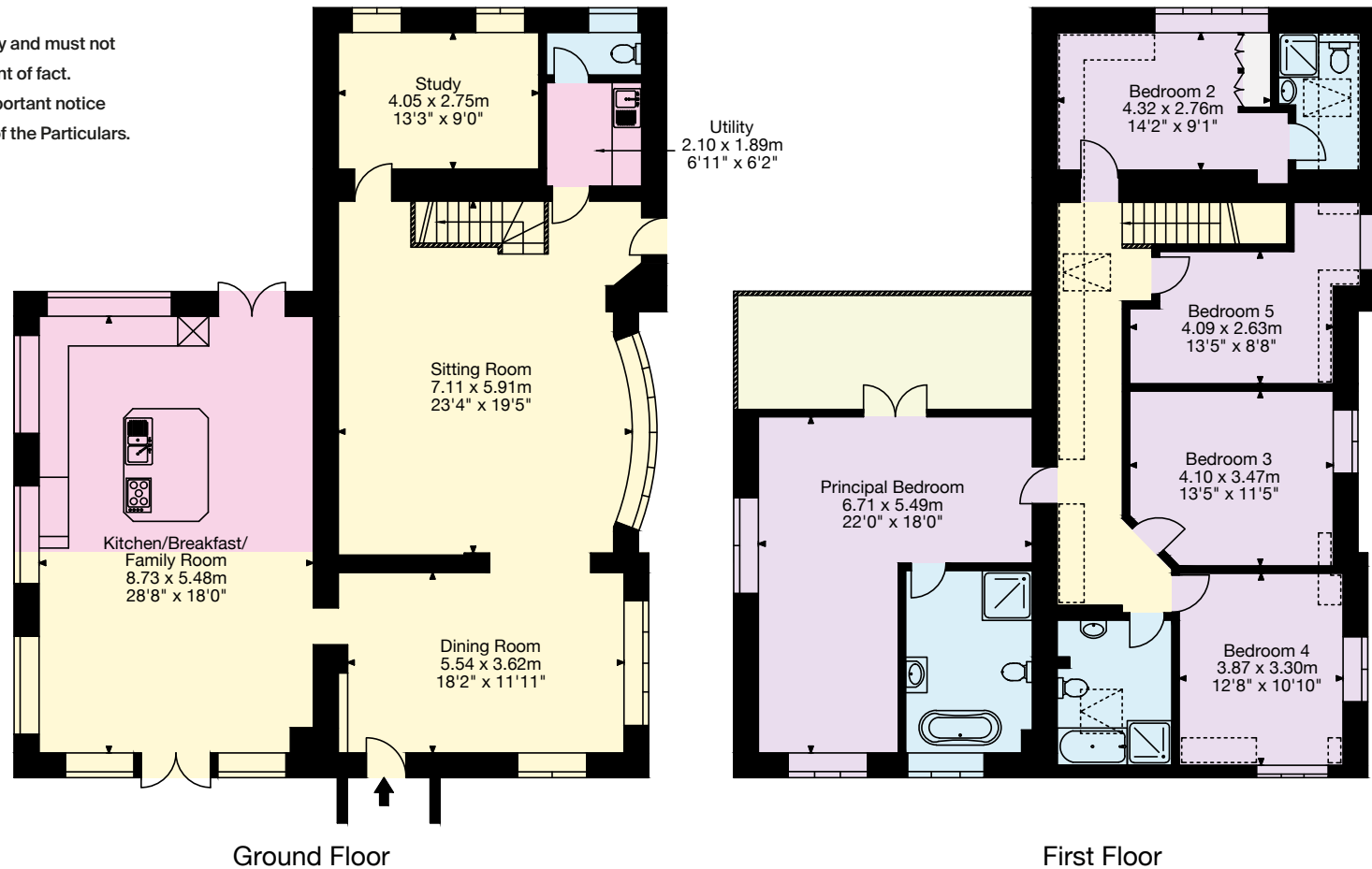


Approximate Gross Internal Floor Area

Total Area = 266 sq m/2,863 sq ft

This plan is for guidance only and must not be relied upon as a statement of fact.

Attention is drawn to the important notice on the last page of the text of the Particulars.



Knight Frank Bristol

1 The Mall, Clifton

Bristol, BS8 4DP

[knightfrank.co.uk](https://www.knightfrank.co.uk)

I would be delighted to tell you more

Robin Engley

0117 317 1996

robin.engley@knightfrank.com



Fixtures and fittings: A list of the fitted carpets, curtains, light fittings and other items fixed to the property which are included in the sale (or may be available by separate negotiation) will be provided by the Seller's Solicitors. All those items regarded as tenant's fixtures and fittings, are specifically excluded from any tenancy and will not be evidenced in the inventory. Important Notice: 1. Particulars: These particulars are not an offer or contract, nor part of one. You should not rely on statements by Knight Frank LLP in the particulars or by word of mouth or in writing ("information") as being factually accurate about the property, its condition or its value. Neither Knight Frank LLP nor any joint agent has any authority to make any representations about the property, and accordingly any information given is entirely without responsibility on the part of the agents, seller(s) or lessor(s). 2. Photos, Videos etc: The photographs, property videos and virtual viewings etc. show only certain parts of the property as they appeared at the time they were taken. Areas, measurements and distances given are approximate only. 3. Regulations etc: Any reference to alterations to, or use of, any part of the property does not mean that any necessary planning, building regulations or other consent has been obtained. A buyer or lessee must find out by inspection or in other ways that these matters have been properly dealt with and that all information is correct.

4. VAT: The VAT position relating to the property may change without notice. 5. To find out how we process Personal Data, please refer to our Group Privacy Statement and other notices at <https://www.knightfrank.com/legals/privacy-statement>.

Particulars dated March 2025. Photographs and videos dated September 2022.

Knight Frank is the trading name of Knight Frank LLP. Knight Frank LLP is a limited liability partnership registered in England and Wales with registered number OC305934. Our registered office is at 55 Baker Street, London W1U 8AN where you may look at a list of members' names. If we use the term 'partner' when referring to one of our representatives, that person will either be a member, employee, worker or consultant of Knight Frank LLP and not a partner in a partnership. If you do not want us to contact you further about our services then please contact us by either calling 020 3544 0692, email to marketing.help@knightfrank.com or post to our UK Residential Marketing Manager at our registered office (above) providing your name and address.