





GROVE COTTAGE

Front Street, Bamburgh, Northumberland



AN EXCEPTIONAL PERIOD HOME

In the heart of Northumberland's most sought-after coastal village.

		
4	3	1
		EPC
		G

Local Authority: Northumberland County Council
Tenure: Freehold

Offers Over: £725,000



THE PROPERTY

Nestled in the heart of Bamburgh Village, Grove Cottage is a charming period home, beautifully positioned on Front Street between the Victoria Hotel and the renowned Carter’s Butcher. With its elevated outlook over the village green and views of Bamburgh Castle, this exceptional property offers a rare opportunity to own a home in one of Northumberland’s most desirable coastal locations.

Arranged over two floors, the property boasts four well-appointed bedrooms, two bathrooms, and bright, characterful living spaces, all enhanced by original features and modern comforts.

ACCOMMODATION

Ground Floor

- Inviting sitting room with a wood-burning stove, creating a warm and welcoming atmosphere.
- Open-plan kitchen and dining area, well-equipped for modern living and leading into a charming orangery.



- Double bedroom with easy access to the adjacent shower room.
- Shower room featuring a walk-in shower, washbasin, and WC.

First Floor

- Principal super king-size bedroom with built-in storage and a luxurious en suite shower room.
- Twin bedroom with wardrobe and ample storage.
- Cosy fourth bedroom with a 4ft double bed, ideal as a spacious single or an intimate double.
- Stylish family bathroom with a bath, handheld shower attachment, washbasin, and WC.

Outside

- Private rear courtyard, offering a peaceful space for outdoor dining and entertaining.



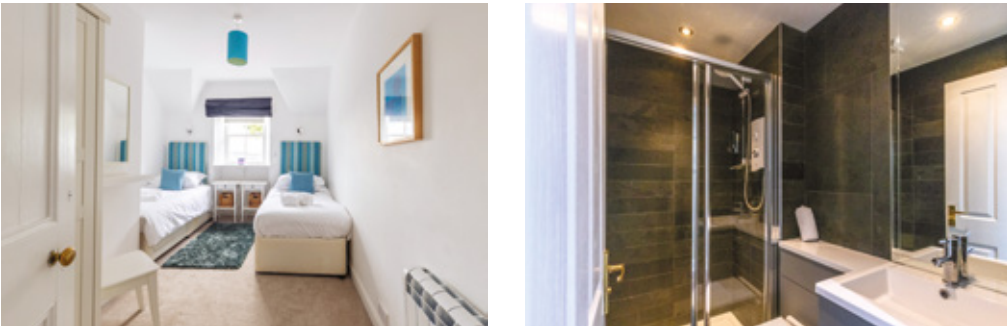
LOCATION

Bamburgh is renowned for its historic charm, stunning coastal scenery, and vibrant community. Grove Cottage is ideally situated within walking distance of the village’s renowned restaurants, boutique shops, and, of course, the golden sandy beach stretching beneath the iconic castle.

With views of the village green and the Castle itself, Grove Cottage enjoys a prime position on Front Street in Bamburgh, one of Northumberland’s most sought-after coastal villages. Here, the renowned Bamburgh Castle stands tall, casting its majestic shadow over miles of golden sandy beaches stretching to the north and the picturesque village green to the west.

For the fourth consecutive year, Bamburgh has been crowned the best seaside resort in the UK by consumer group Which?, earning five-star ratings for its beaches, seafront, peace and quiet and scenery. The village offers a charming selection of independent shops, traditional pubs, acclaimed restaurants, tea houses, and cafés.





Golf enthusiasts will appreciate the breathtaking Bamburgh Castle Golf Club, regarded as one of Britain’s most scenic courses, where guests of Bamburgh First enjoy complimentary play when competitions are not in progress.

Beyond the village, Northumberland’s rich heritage and natural beauty unfold. Alnwick, a historic market town just 20 minutes away, is home to the world-famous Alnwick Castle—recognised as a filming location for Harry Potter—as well as the enchanting Alnwick Gardens and the literary treasure trove of Barter Books. A 25-minute journey north brings you to the Holy Island of Lindisfarne, steeped in history and accessible only via a tidal causeway. To the west, the rolling Cheviot Hills and the vast landscapes of Northumberland National Park offer breathtaking scenery, walking trails, and wildlife encounters.

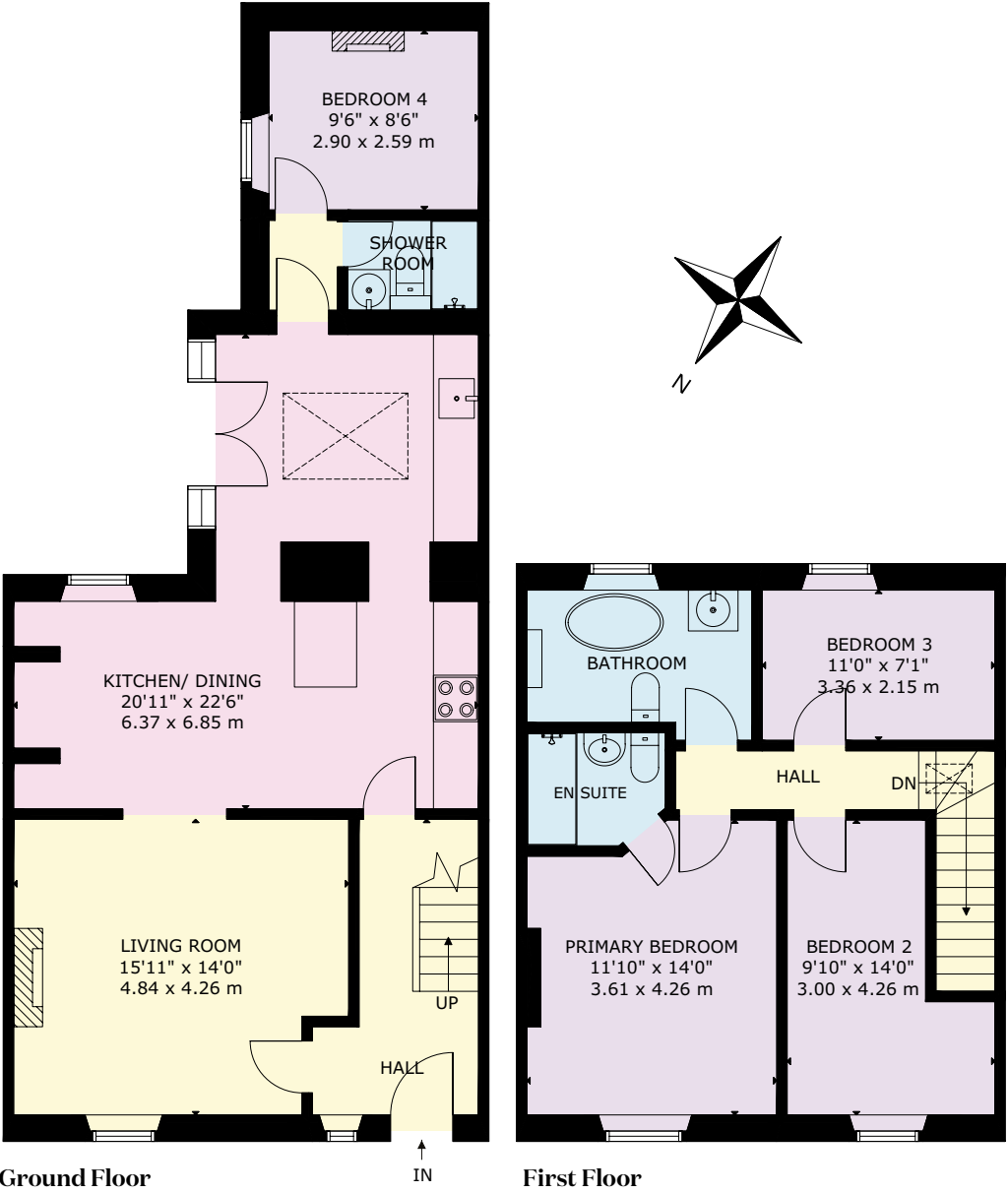
For those drawn to the sea, Seahouses, just 15 minutes away, serves as the gateway to the Farne Islands, a spectacular wildlife haven famed for its puffins, seals, and seabird colonies. A short drive along the coast reveals a string of charming fishing villages, from Craster, renowned for its famous oak-smoked kippers, to the tranquil shores of Newton by the Sea, Alnmouth, and Amble, the latter featuring a picturesque marina and vibrant seafood scene.

With its combination of stunning landscapes, rich history, and coastal charm, Grove Cottage offers an exceptional lifestyle in one of England’s most treasured seaside locations.

ADDITIONAL INFORMATION

Grove Cottage has been successfully operated as a luxury holiday let, offering an attractive opportunity for those seeking an investment property or a private residence in this highly desirable coastal setting.

- Reception
- Bedroom
- Bathroom
- Kitchen/Utility
- Storage
- Outside



Approximate Gross Internal Area =
2,244 sq ft / 209 sq m

This plan is for layout guidance only. Not drawn to scale unless stated. Windows and door openings are approximate. Whilst every care is taken in the preparation of this plan, please check all dimensions, shapes and compass bearings before making any decisions reliant upon them.

Financial Guarantee/Anti Money Laundering: All offers to purchase the property (regardless of whether the offer is on a cash basis or subject to loan funding) must be accompanied with evidence of Source of Funds. This can be in the form of a bank statement showing the purchase price, a financial reference from a bank/funding source, or confirmation from a solicitor that the purchaser has sufficient funds to complete the purchase. In addition, the purchaser must supply certified copies of his/her passport and confirmation of residence in terms acceptable under anti money laundering (AML) legislation. These documents will be required for all individuals who will appear on the title once the transaction is complete.

I would be delighted
to tell you more.

Edward Douglas-Home
0131 222 9600
edward.douglas-home@knightfrank.com

Knight Frank Edinburgh
80 Queen Street, Edinburgh
EH2 4NF

[knightfrank.co.uk](https://www.knightfrank.co.uk)

Your partners in property

Important Notice: 1. Particulars: These particulars are not an offer or contract, nor part of one. You should not rely on statements given by KF Scotland Ltd., in the particulars, by word of mouth or in writing ("information") as being factually accurate about the property, its condition or its value. Neither KF Scotland Ltd, nor any joint agent has any authority to make any representations about the property, and accordingly any information given is entirely without responsibility on the part of KF Scotland Ltd. 2. Material Information: Please note that the material information is provided to KF Scotland Ltd, by third parties and is provided here as a guide only. While KF Scotland Ltd, has taken steps to verify this information, we advise you to confirm the details of any such material information prior to any offer being submitted. If we are informed of changes to this information by the seller or another third party, we will use reasonable endeavours to update this as soon as practical. 3. Photos, Videos etc: The photographs, property videos and virtual viewings etc. show only certain parts of the property as they appeared at the time they were taken. Areas, measurements and distances given are approximate only. 4. Regulations etc: Any reference to alterations to, or use of, any part of the property does not mean that any necessary planning, building regulations or other consent has been obtained. A buyer must find out by inspection or in other ways that these matters have been properly dealt with and that all information is correct. 5. Fixtures and fittings: A list of the fitted carpets, curtains, light fittings and other items fixed to the property which are included in the sale (or may be available by separate negotiation) will be provided by the Seller's Solicitors. 6. VAT: The VAT position relating to the property may change without notice. 7. To find out how we process Personal Data, please refer to our Group Privacy Statement and other notices at <https://www.knightfrank.com/legals/privacy-statement>.

Particulars dated March 2025. Photographs and videos dated March 2025. All information is correct at the time of going to print. KF Scotland Ltd is a limited company registered in Scotland with registered number 120/NE78008. Our registered office is 41 Charlotte Square, Edinburgh, EH2 4HQ. KF Scotland Limited is an independently owned member of the Knight Frank Network operating under licence from Knight Frank LLP.