



Melville Street, Edinburgh, EH3



An **exceptional collection** of refurbished properties in the West End, including a Georgian townhouse, studio flat, two mews properties and a garage.

Overview

All properties have been completely refurbished, inside and out, to a very high standard between 2021 to 2023, designed to incorporate all modern conveniences, and to enhance and simplify living. The properties have sophisticated integrated A/V and lighting systems, all controlled through simple app's or by Alexa/voice control in certain locations.

Melville Street has always been, and remains today as one of Edinburgh's finest, and most prestigious Georgian streets with the statue as its centre piece and bookended by St Mary's Cathedral and the dome of St George's Church. These unique properties are situated in the city centre at the heart of Edinburgh's West End; a popular area comprising beautiful Georgian terraces and crescents interspersed with gardens. A stone's throw away, the charming, cobbled William Street enjoys fashionable shops, boutiques, restaurants and bars with its array of independent businesses.

The properties are extremely well connected, being only a short walk from the retail, financial and commercial city centre in Princes Street and George Street and only 200m to the tram connecting to Edinburgh International Airport. There is easy access to the impressive Water of Leith walkway leading to the Edinburgh cycle path network, whilst the open spaces of the Royal Botanic Gardens and Inverleith Park are also within walking distance. The area is particularly popular with families, with schools including St. George's School for Girls, Erskine Stewart's Melville Schools, Fettes College and The Edinburgh Academy all nearby.





The Townhouse

This spectacular townhouse, built in circa 1825, is accessed via an inviting main door entrance at ground level. The entrance hall sets the tone, both in terms of the scale and the quality of the finish.

On the ground level, the impressive kitchen/dining room is positioned in the front east-facing room. The bespoke contemporary kitchen features a large island unit, ample storage including a traditional larder cupboard, Miele appliances and high-quality fixtures and fittings throughout. The charming sitting room is set to the rear of the property featuring a large sash and case window overlooking the garden and showcases lovely features including a modern fireplace and a connected private study. The ground floor is completed by a spacious cloakroom/WC. The elegant stairs to the upper floors are crowned by a beautiful new cupola which provides natural light through the centre of the house.



EPC
C



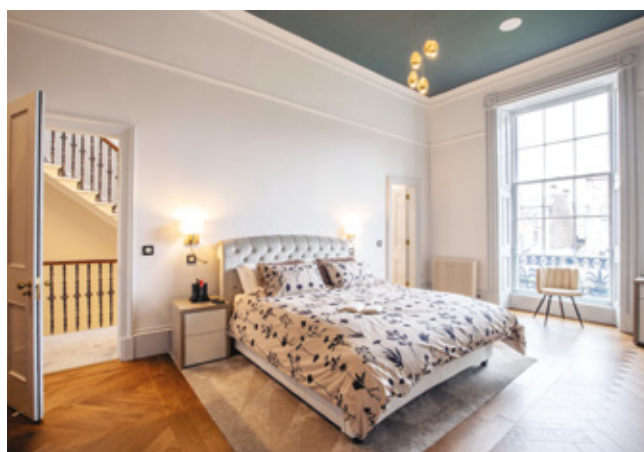
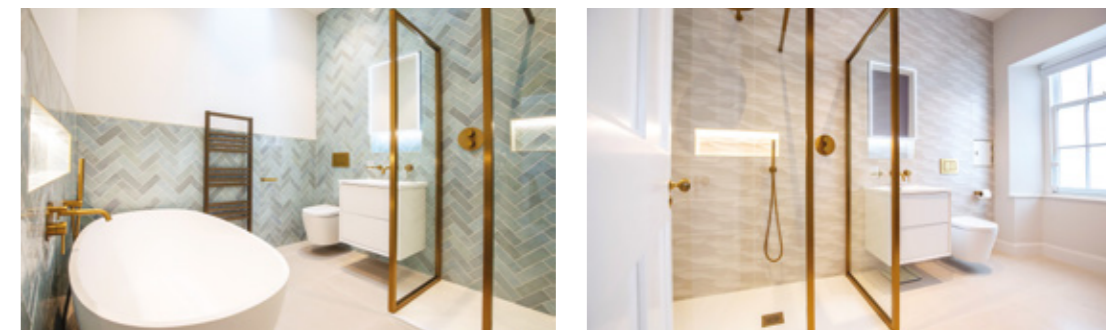
To the front of the first floor, the drawing room is exceptional, providing incredible bright living space with three large sash and case windows and a large, flexible entertaining area. There are views to the Castle from both the first and second floors of the property. The impressive principal bedroom is located to the rear and benefits from a stunning en suite bathroom and a bespoke designed dressing area.

On the second floor are three further well-proportioned double bedrooms and two bathrooms.

The property is completed with the basement floor, that leads out to the private garden, with a guest bedroom, an en suite shower room and a sizeable laundry room at this level. There are storage amenities on each level of the property as well as a laundry chute from the top of the house to the laundry room. The basement area also has additional cellar storage with two dry-lined cellars and including electricity, water and lighting. To the rear is an attractive landscaped private walled garden, affording full afternoon sun.

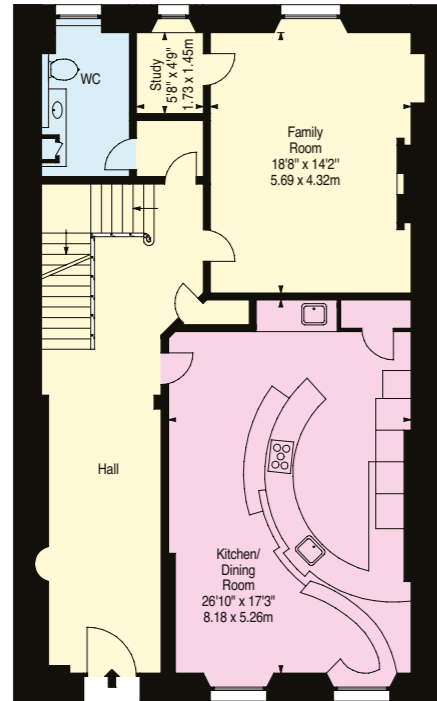
The garden has power and water connections installed and also feature lighting with night sensors. The owner can apply for on-street resident parking permits with parking available at the front of the property.

Council Tax
Band G

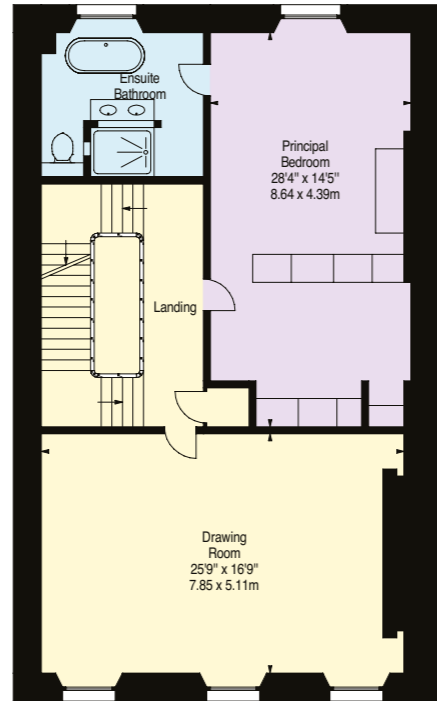


**Approximate Gross Internal Floor Area
Townhouse (including Cellars)
4331 Sq Ft - 402.35 Sq M**

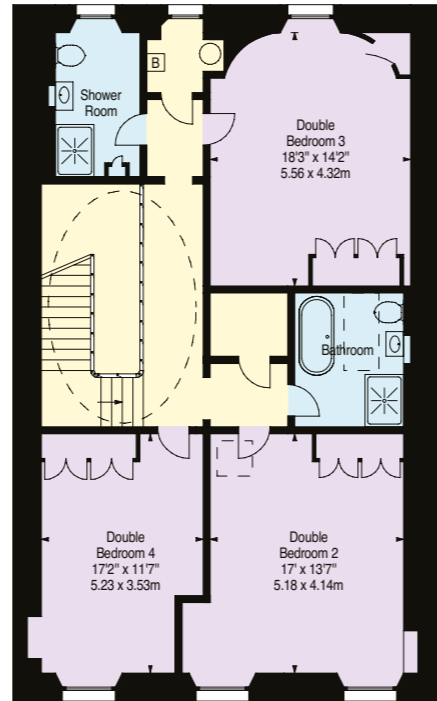
All plans are for guidance only and must not be relied upon as a statement of fact. Attention is drawn to the Important Notice on the last page of the text of the Particulars.



Ground Floor



First Floor



Second Floor

- Reception
- Bedroom
- Bathroom
- Kitchen/Utility
- Storage
- Outside

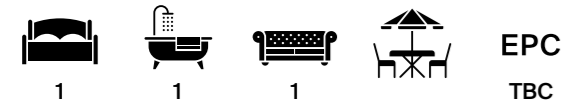




47A Melville Street – The Studio

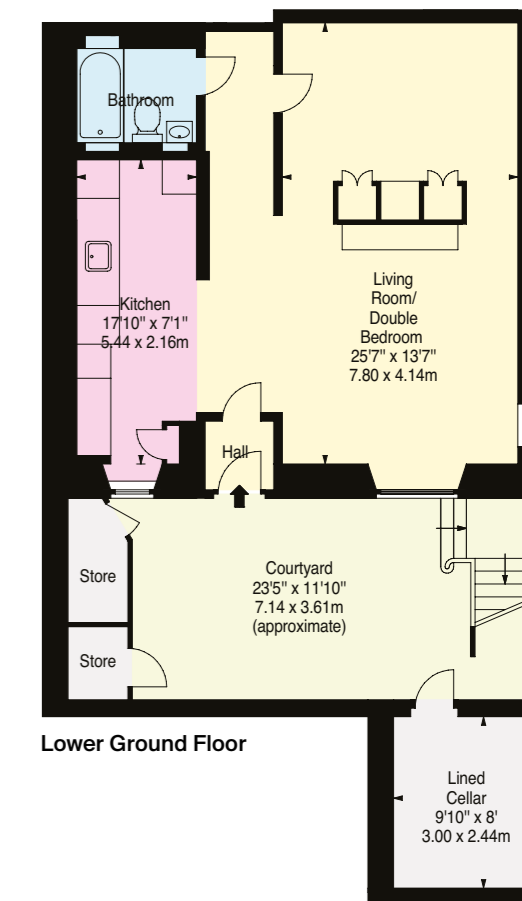
This apartment benefits from its own main door access via a private front courtyard. The flat is entered through a lobby into the main open plan living space. This charming living space is open plan to the kitchen, a perfect space for entertaining guests. The kitchen has been designed and completed to a very high standard with plentiful storage, attractive units and worktops and Siemens appliances throughout.

The sizeable bedroom, whilst open plan with the living space, is cleverly divided by the installation of a wardrobe and dresser unit with a TV wall to the living room on the other side. The bathroom has been finished to a high standard, and in common with all other bathrooms, include bespoke tiling, electric under floor heating and a de-mist mirror. The layout has been designed so that should an owner wish to reconnect the apartment to the main house, only a doorway needs to be created to enable this.



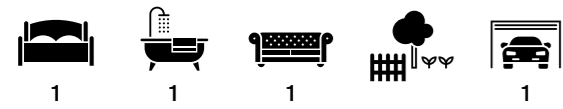
Approximate Gross Internal Floor Area
673 Sq Ft - 62.52 Sq M
Cellar: 83 Sq Ft - 7.71 Sq M

- Reception
- Bedroom
- Bathroom
- Kitchen/Utility
- Storage
- Outside

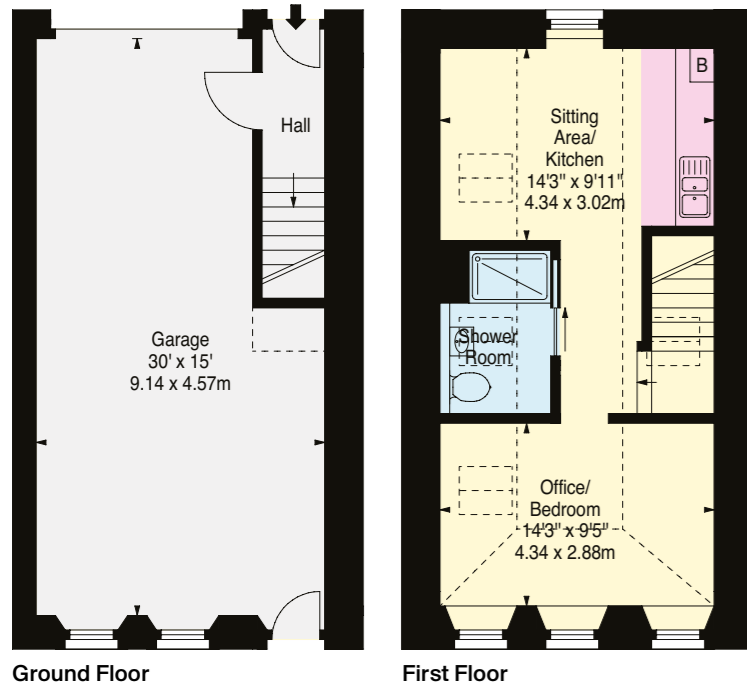


Mews One

This mews property has been designed with garaging for 2 cars in tandem on the ground floor there is direct access from the garage to the private rear patio. The mews has a separate front door with entrance hall and staircase leading to the upper level which has been refurbished to a high quality and could be used as a home office or a studio apartment (subject to planning). The property has a kitchen and an attractive shower room. Access of the rear mews lane from Chester Street.

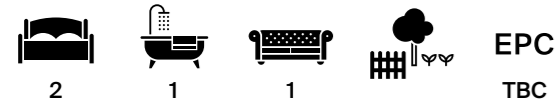


Approximate Gross Internal Floor Area
874SqFt - 81.19SqM
(Including Garage)

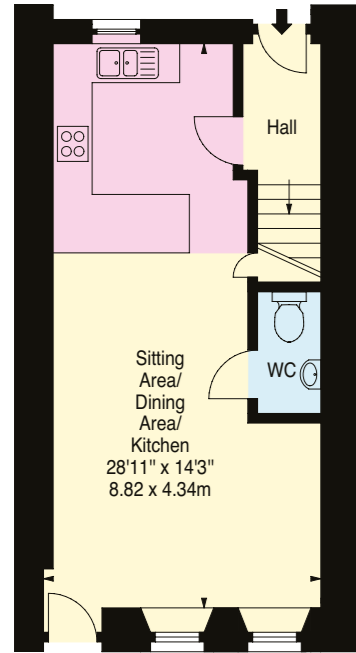


Mews Two

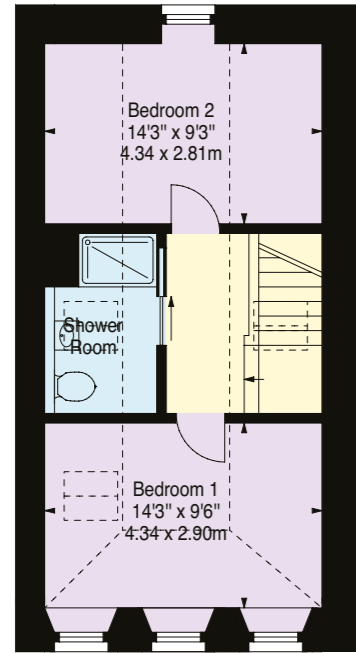
This exceptional and charming, two bedroom mews property is accessed from the private lane off Chester Street. The entrance hall leads into the open plan kitchen, living and dining space on the ground floor level. The striking kitchen has everything required for cooking and convenience, with excellent storage, Siemens appliances, attractive worktops and a breakfast bar. There is space for a table and a living area to the rear with outlooks onto the mews' private garden patio area. There is a WC on this level. Upstairs, there is two spacious double bedrooms, both benefiting from built in storage. There is a stylish shower room positioned between the bedrooms.



Approximate Gross Internal Floor Area
821 Sq Ft - 76.27 Sq M



Ground Floor



First Floor



Specification sheet

- Miele integrated appliances in the townhouse, Siemens appliances in the apartment and the mews.
- KNX A/V system fitted throughout the properties: lights door entry, CCTV, sound and heating can all be operated through mobile app
- Keyless door entry for townhouse and mews garage
- Sonos speaker system installed in principal rooms in the townhouse
- Wi-Fi boosters on every floor
- Lighting and music controlled through Alexa
- Underfloor heating in all bathrooms as well as integrated LED lights
- All properties have been fully re-wired and plumbed with new central heating boilers.
- Walls have been replastered and decorated with new insulations and flooring installed throughout.
- New sound/draft proof insulated windows installed throughout all properties.
- Further specification details are available upon request

Location

Edinburgh International Airport is situated 7 miles to the west and there is also straightforward access to the city by-pass, the M9, M8 and M90 motorways and Edinburgh's Haymarket and Waverley stations are located nearby. Local amenities include the Drumsheugh Private Swimming Baths, the Edinburgh Sports Club, the Dean Tennis Club, numerous yoga studios and the Modern and Dean Art Galleries.

There is easy access to the impressive Water of Leith walkway leading to the Edinburgh cycle path network, whilst the open spaces of the Royal Botanic Gardens and Inverleith Park are also within walking distance. The area is particularly popular with families, with schools including St. George's School for Girls, Erskine Stewart's Melville Schools, Fettes College and The Edinburgh Academy all nearby.

Approximate Gross Internal Floor Area

Townhouse

4113 Sq Ft - 382.10 Sq M

Townhouse Cellars & Stores

218 Sq Ft - 20.25 Sq M

Studio Apartment

673 Sq Ft - 62.52 Sq M

Studio Cellar

83 Sq Ft - 7.71 Sq M

Mews 1

874 Sq Ft - 81.19 Sq M

Mews 2

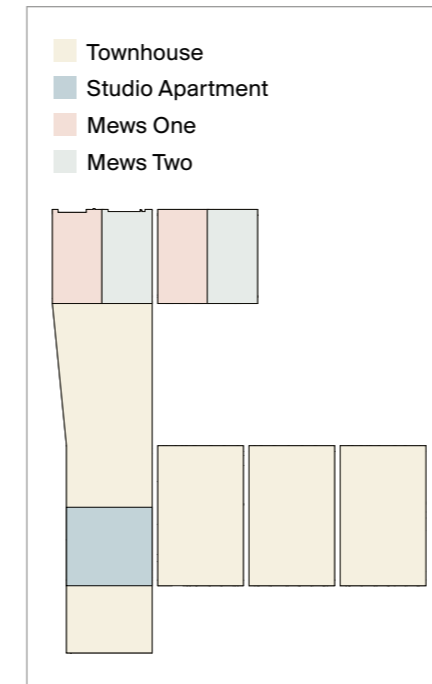
821 Sq Ft - 76.27 Sq M

Grand Total

6782 Sq Ft - 630.05 Sq M

This plan is for guidance only and must not be relied upon as a statement of fact. Attention is drawn to the Important Notice on the last page of the text of the Particulars.

Block Plan



Knight Frank Edinburgh

80 Queen Street

Edinburgh

EH2 4NF

[knightfrank.co.uk](https://www.knightfrank.co.uk)

We would be delighted to tell you more

Neil Scott

0131 222 9600

neil.scott@knightfrank.com

Edward Douglas Home

0131 222 9606

Edward.Douglas-Home@knightfrank.com

Rosi Dow

0131 222 9600

rosi.dow@knightfrank.com



Fixtures and fittings: A list of the fitted carpets, curtains, light fittings and other items fixed to the property which are included in the sale (or may be available by separate negotiation) will be provided by the Seller's Solicitors.

Important Notice: 1. Particulars: These particulars are not an offer or contract, nor part of one. You should not rely on statements by Knight Frank LLP in the particulars or by word of mouth or in writing ("information") as being factually accurate about the property, its condition or its value. Neither Knight Frank LLP nor any joint agent has any authority to make any representations about the property, and accordingly any information given is entirely without responsibility on the part of the agents, seller(s) or lessor(s). 2. Photos, Videos etc: The photographs, property videos and virtual viewings etc. show only certain parts of the property as they appeared at the time they were taken. Areas, measurements and distances given are approximate only. 3. Regulations etc: Any reference to alterations to, or use of, any part of the property does not mean that any necessary planning, building regulations or other consent has been obtained. A buyer or lessee must find out by inspection or in other ways that these matters have been properly dealt with and that all information is correct. 4. VAT: The VAT position relating to the property may change without notice. 5. To find out how we process Personal Data, please refer to our Group Privacy Statement and other notices at <https://www.knightfrank.com/legals/privacy-statement>.

Particulars dated October 2024. Photographs and videos dated May 2024.

All information is correct at the time of going to print. Knight Frank is the trading name of Knight Frank LLP. Knight Frank LLP is a limited liability partnership registered in England and Wales with registered number OC305934. Our registered office is at 55 Baker Street, London W1U 8AN. We use the term 'partner' to refer to a member of Knight Frank LLP, or an employee or consultant. A list of members names of Knight Frank LLP may be inspected at our registered office. If you do not want us to contact you further about our services then please contact us by either calling 020 3544 0692, email to marketing.help@knightfrank.com or post to our UK Residential Marketing Manager at our registered office (above) providing your name and address. Brochure by wordperfectprint.com

