



The Landings

RATHO



Welcome to The Landings

Five stunning eco-friendly family homes nestled in a sought-after village, offering abundant amenities, peaceful walkways, and sports facilities, all just a short distance from central Edinburgh.





Modern Sustainability Meets Elegant Design

The Landings, Ratho offers eco-friendly homes that combine modern efficiency with stunning, stylish interiors. Each residence is crafted to an exceptional standard, using high-quality, sustainable materials and finishes.



Experience the Best of Ratho Living

Ratho offers a perfect blend of amenities and community spirit. Enjoy the Bridge Inn, the Lost Shore Surf Resort, and Ratho Park Golf Club. With Ratho Marina and the Union Canal nearby, it's a unique place to call home.



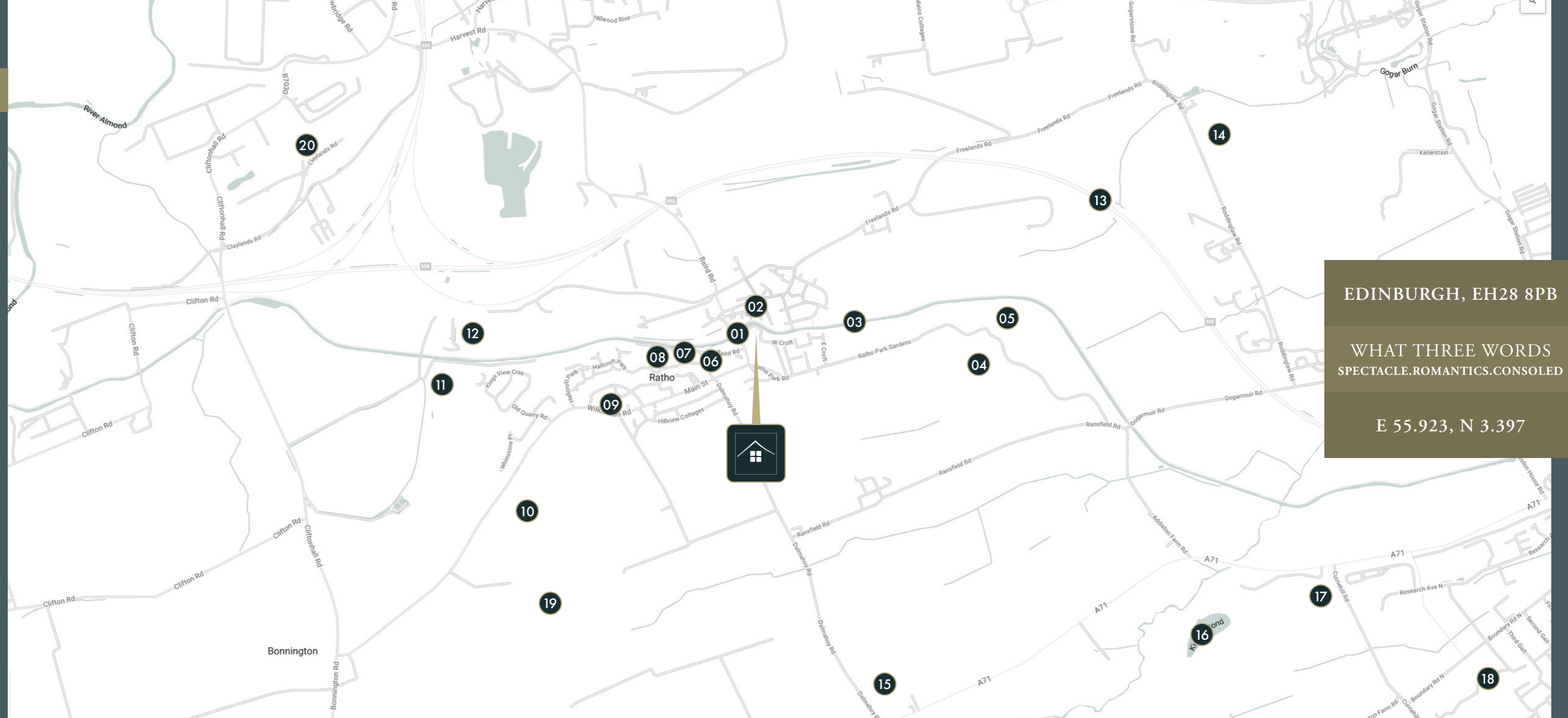


Close to adventure.
Yet enveloped in
tranquility.

Ratho is a tranquil village on Edinburgh's western edge. At The Landings, you're just a short journey by car or bike from the city's heart, with Union Canal, Lost Shore Surf Resort, Ratho Golf Club and the Edinburgh International Climbing Arena, inviting adventure right from your doorstep. A perfect blend of city life and country calm awaits.

SITE LOCATION

1. Bridge Inn
2. Ratho Marina
3. Union Canal
4. Ratho Park Golf Club
5. Ratho Professional Shop
6. Ratho Community Woodland
7. Ratho Community Centre
8. Ratho Primary School
9. Ratho Medical Practice
10. Tormain Woods
11. Lost Shore Surf Resort
12. Edinburgh International Climbing Arena
13. M8 Motorway
14. Gogarburn Golf Club
15. Ratho Park
16. Kierland Pond
17. Edinburgh Polo Club
18. Heriot-Watt University Edinburgh Campus
19. Tormain Hill Cup and Ring Marks
20. Scottish Fire and Rescue Service



EDINBURGH, EH28 8PB

WHAT THREE WORDS
SPECTACLE.ROMANTICS.CONSOLED

E 55.923, N 3.397

Plot 01
Canal House

5 Bedroom Detached House
175.72m² | 1891sqft

Plot 02
Monkland House

5 Bedroom Detached House
175.72m² | 1891sqft

Plot 03
The Crinlin

5 Bedroom Detached House
175.72m² | 1891sqft

Plot 04
Union House

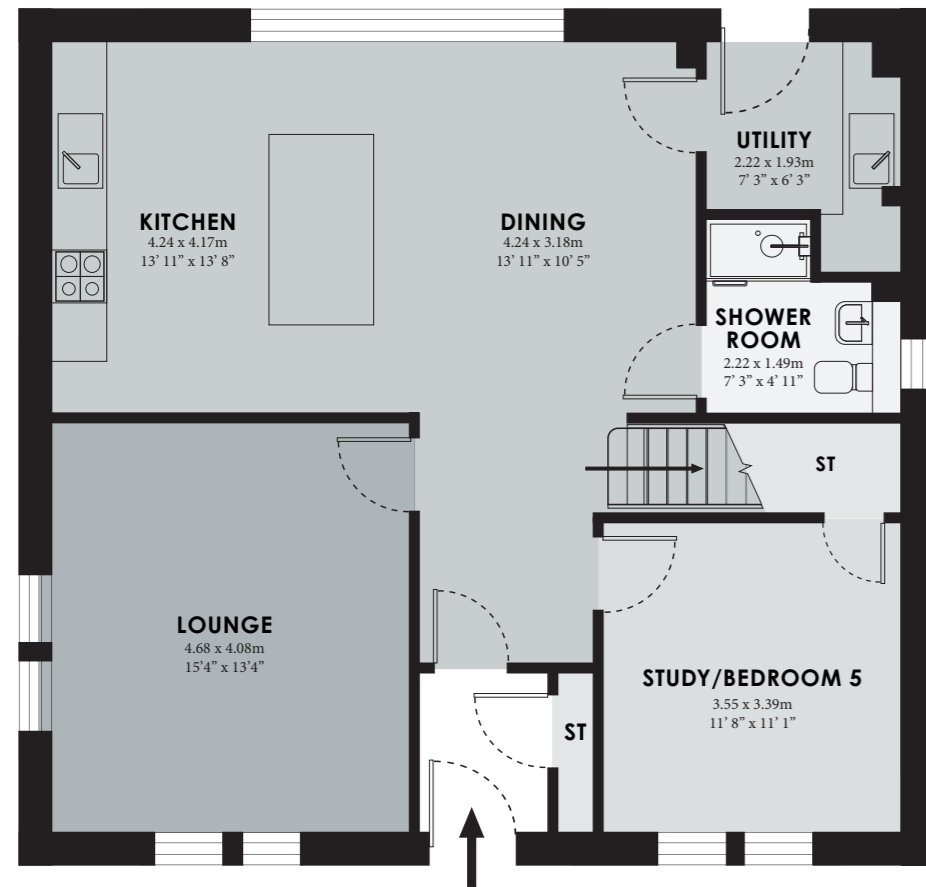
5 Bedroom Detached House
175.72m² | 1891sqft

Plot 05
Caledonian House

5 Bedroom Detached House
221.58m² | 2385sqft



Plot 1 Canal House



Ground Floor

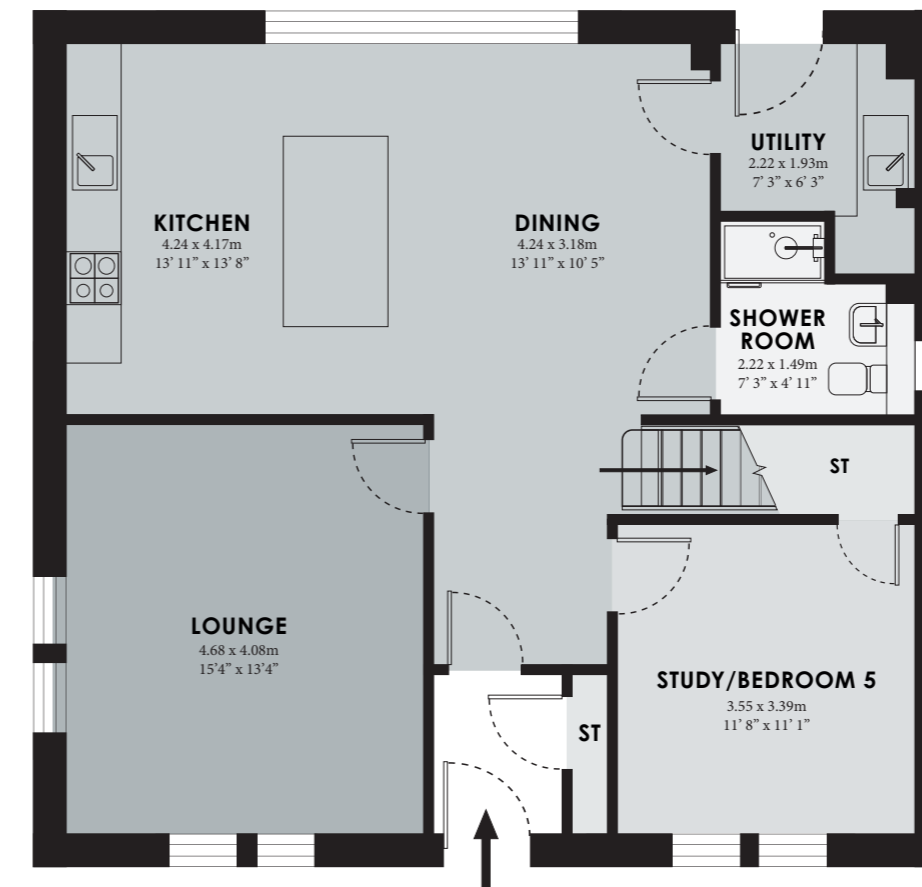


First Floor

175.72m²

1891ft²

Plot 2 Monkland House



Ground Floor

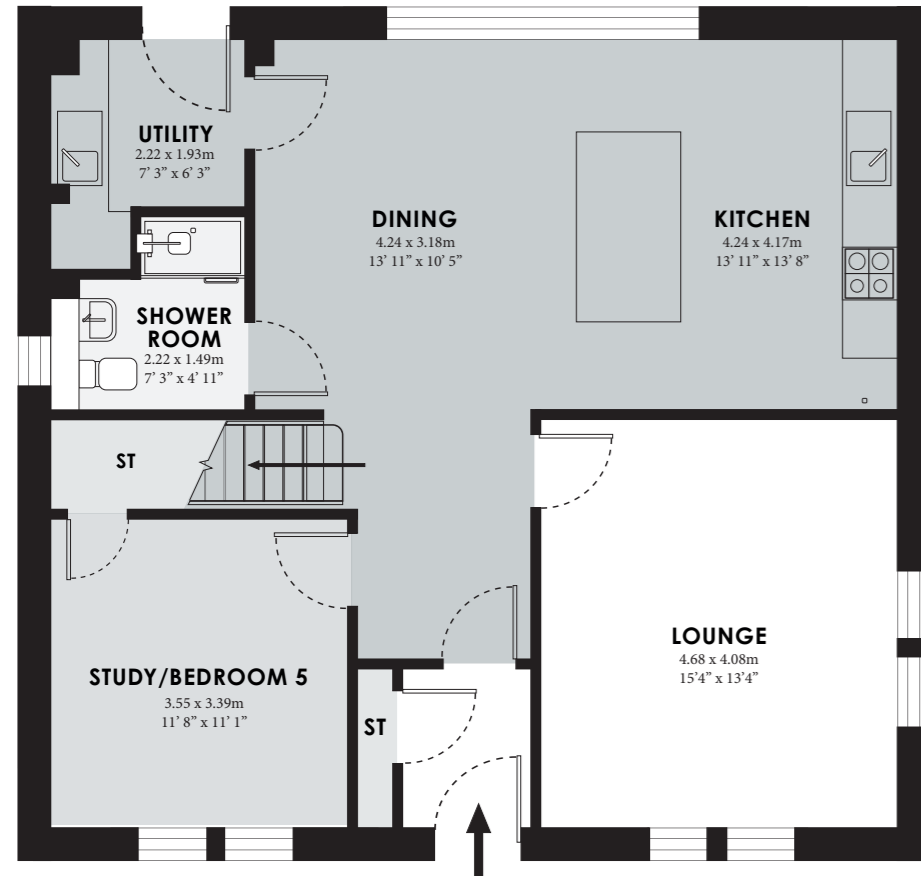


First Floor

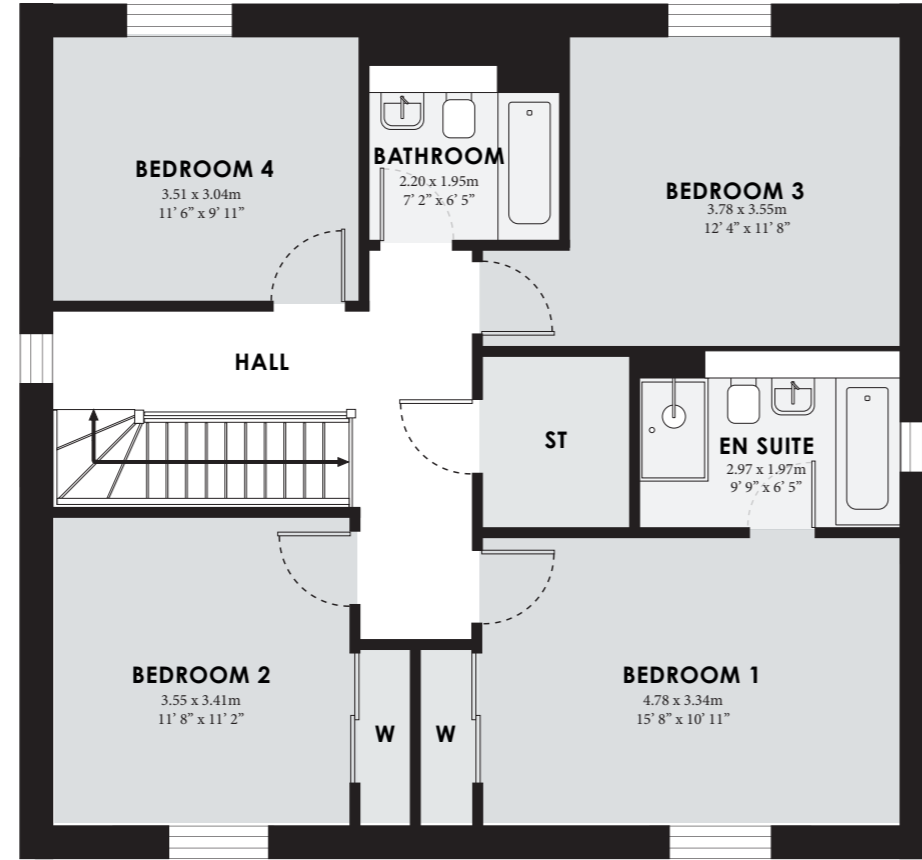
175.72m²

1891ft²

Plot 3 The Crinin



Ground Floor

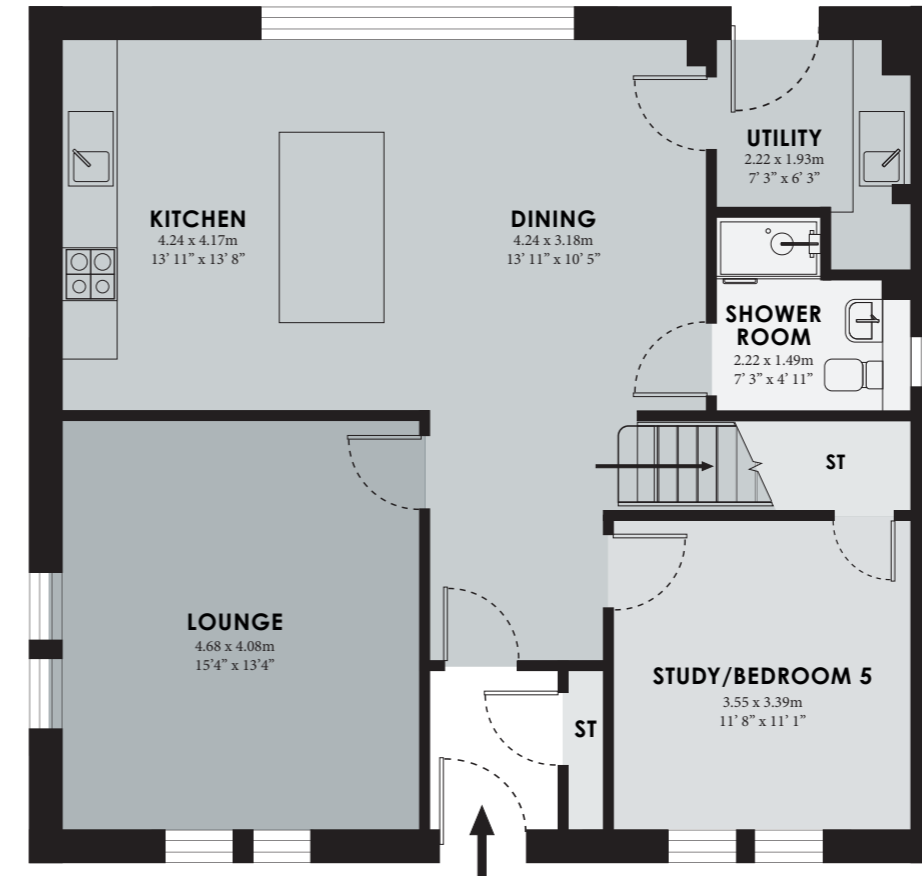


First Floor

175.72m²

1891ft²

Plot 4 Union House



Ground Floor

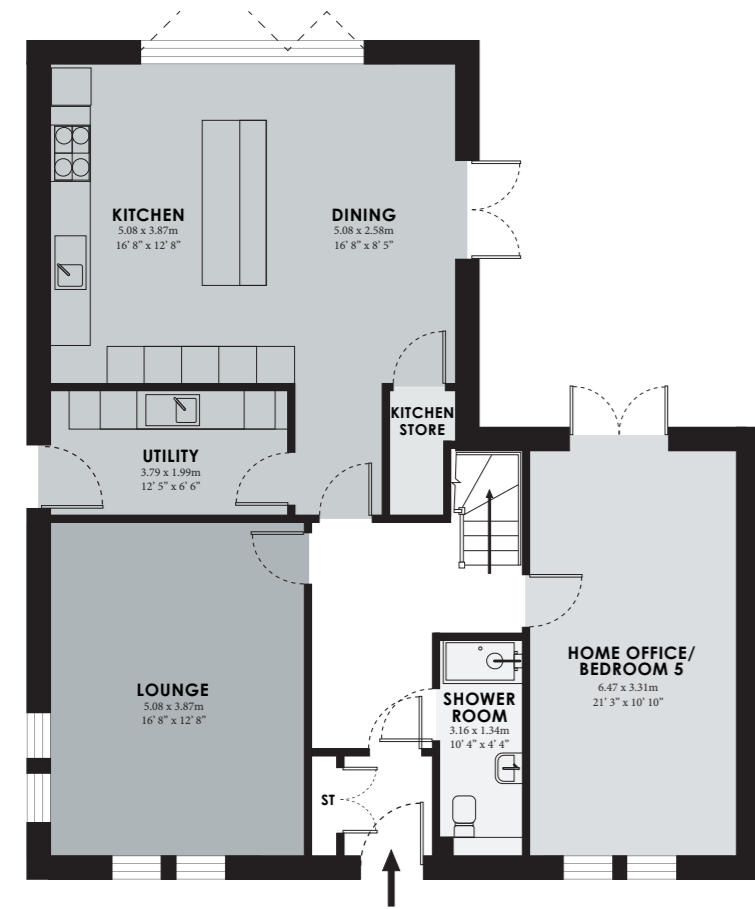


First Floor

175.72m²

1891ft²

Plot 5 Caledonian House



Ground Floor



First Floor

221.58m²

2385ft²



Specification

Kitchen

- Contemporary Leicht Kitchens by Kitchens International
- Matt doors with three colour combinations together with sleek, slimline laminate worktops
- Handles or handleless options
- Under cabinet LED lighting
- Fully integrated appliances by Siemens/Neff
 - Fridge-freezer
 - Dishwasher
 - 70cm Induction Venting Hob
 - Eye level oven
 - Combination Microwave
- Soft-closing drawers and cupboards
- Selected sockets with USB points/concealed backflip socket to island
- Open plan breakfast bar island design

Bathrooms & En suites

- Sanitary ware by Villaroy and Bosch
- A stylish choice of RAK Ceramics wall and floor tiles with a mix of full height to wet areas and half height to other areas (see agent for details)
- Feature bath with glass shower screen and chrome shower over
- Chrome heated towel rails
- Hansgrohe shower plus chrome fixtures and fittings
- Shaver points
- Master En-Suite with black finishes, including black towel rail

Technology

- BT fibre optic broadband
- Sky Q Media points to living, kitchen and all bedrooms
- Selected sockets with USB points to lounge, kitchen, home office and bedrooms

Interiors

- Contemporary white doors
- White feature frames and skirtings to all rooms
- White switches and sockets throughout
- Internal walls and ceilings finished in matt white
- Fitted wardrobes to bedrooms 1 and 2
- Combination of LED downlights and pendant lighting
- Designer radiators to living areas and kitchen

Exteriors

- Timber front door with stone surround
- Timber windows
- Slate roofs
- Stone detailing to principal elevation
- Outside lighting to all doors
- Turfing to front and rear gardens
- Private driveway (Single garage client option)

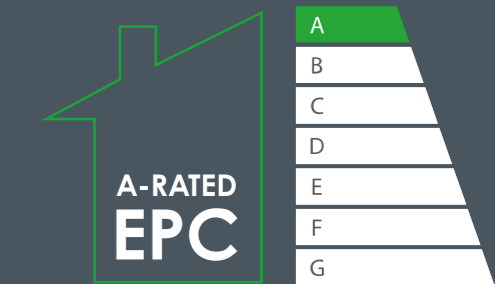
Sustainability

- A-rated Energy Performance Certificate (EPC)
- Client option for a 5Kw electrical battery store and A-rated EPC
- PV Solar panels to the roof
- Samsung - Air Source Heat Pump
- 140mm external wall insulation – Valuetherm Timber kit
- Thermal double glazing



A Green Blueprint for Elegant Living

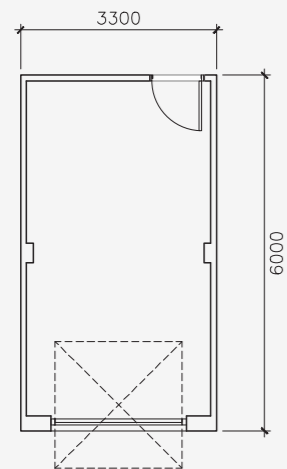
Our homes are designed with your long-term savings in mind, featuring energy-efficient systems, solar panels, and eco-friendly materials. These modern, low-maintenance residences not only reduce your environmental footprint but also significantly lower your utility bills, making it a smart and sustainable investment for the future.



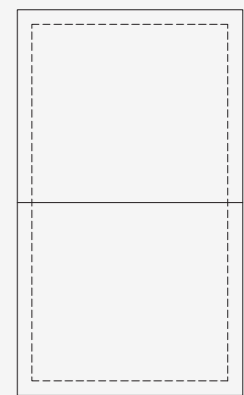
- Rooftop solar panels
- Heat recovery technologies
- Triple glazing

Garage Option 01 | Single

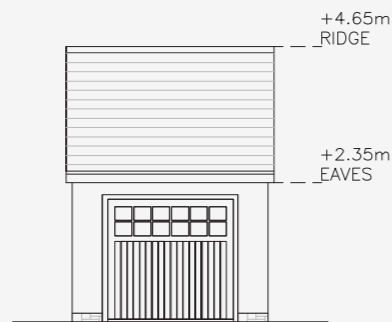
Available to Plots 1-4



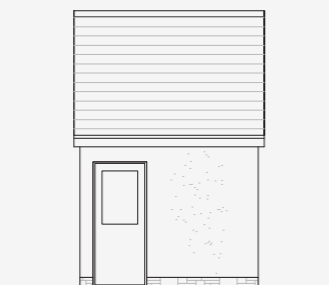
Front Plan



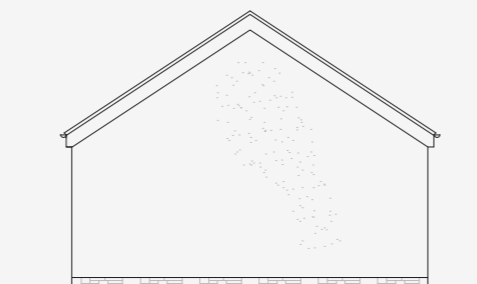
Roof Plan



Front Elevation



Rear Elevation



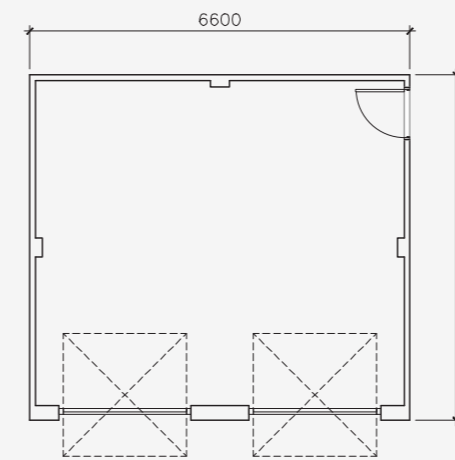
Side Elevation



Side Elevation

Garage Option 02 | Double

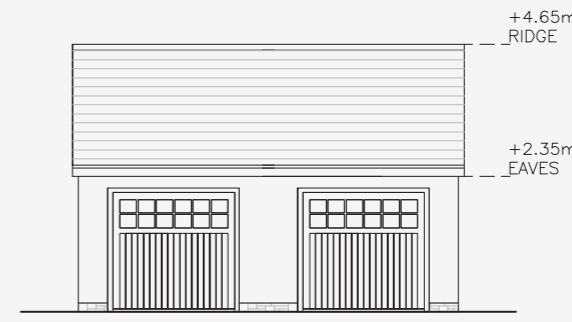
Available to Plot 5



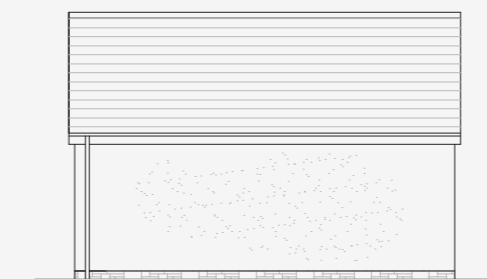
Front Plan



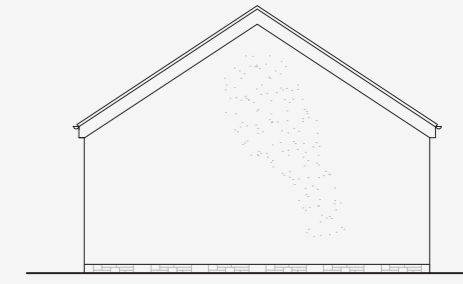
Roof Plan



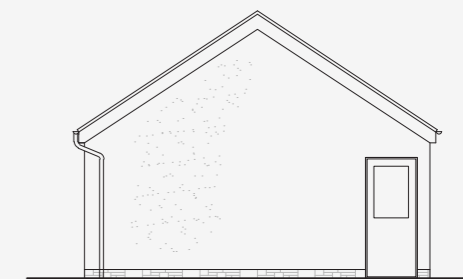
Front Elevation



Rear Elevation



Side Elevation



Side Elevation

For further details, please contact



Neil Scott

neil.scott@knightfrank.com

Rosi Dow

rosi.dow@knightfrank.com

0131 222 9600



Scott Carmichael and his team have over 30 years' experience building award-winning homes, apartments and public buildings in Glasgow, Edinburgh, Stirling, East Kilbride, East Renfrewshire and East Lothian. A Carmichael Home will always be built far beyond the minimum building standards for energy-efficiency. Instead, you can expect a home sustainably built using low carbon design principles that's economical to run and fit for a net zero future.

www.thelandingsratho.co.uk

 @carmichaelhomes

IMPORTANT NOTICE TO CUSTOMERS

The Consumer Protection from Unfair Trading Regulations 2008. Carmichael Homes operates a policy of continual product development and the specifications outlined in this brochure are indicative only. We reserve the right to implement minor changes to the sizes and specifications shown on any plans or drawings.

in this brochure without warning. Where alterations to the design, construction or materials to be used in the construction of the property would materially alter the internal floor space, appearance or market value of the property, we will ensure that these changes are communicated to potential purchasers. Whilst these particulars are prepared with all due care for the convenience of intending purchasers, the information is intended as a guide. The computer generated images and photographs do not necessarily represent the actual finishings/elevation or treatments, landscaping, furnishings and fittings at this development. Floor plans, dimensions and specifications are correct at the time of print. The illustrated location map is a general guide only. Please note that distances and timings referred to in this brochure are approximate and sourced from Google Maps. Nothing contained in this brochure shall constitute or form part of any contract. Information contained in this brochure is accurate at the time of going to print in April 2024.

This brochure, descriptions and all particulars within have been provided by the selling agent, the developer or the architects, this brochure is intended as a guide only. Please note, all floor plans are for marketing and illustrative purposes only. Therefore, we cannot guarantee the accuracy of any specifications or measurements displayed. Measurements and distances of doors, windows, rooms and other items are approximate and should be independently verified. No responsibility is taken for any error, omission, or misstatement.

www.sellitdifferently.com



CARMICHAEL
HOMES

www.thelandingsratho.co.uk